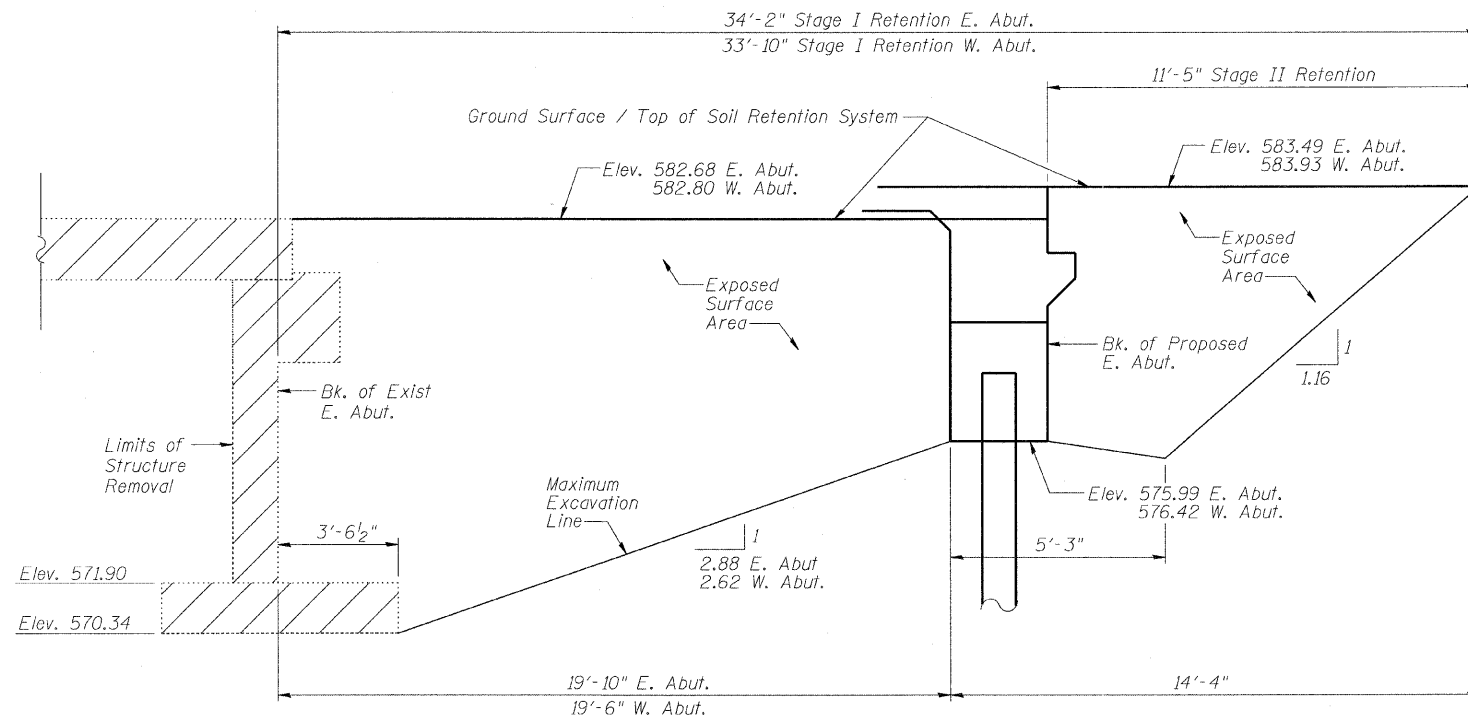
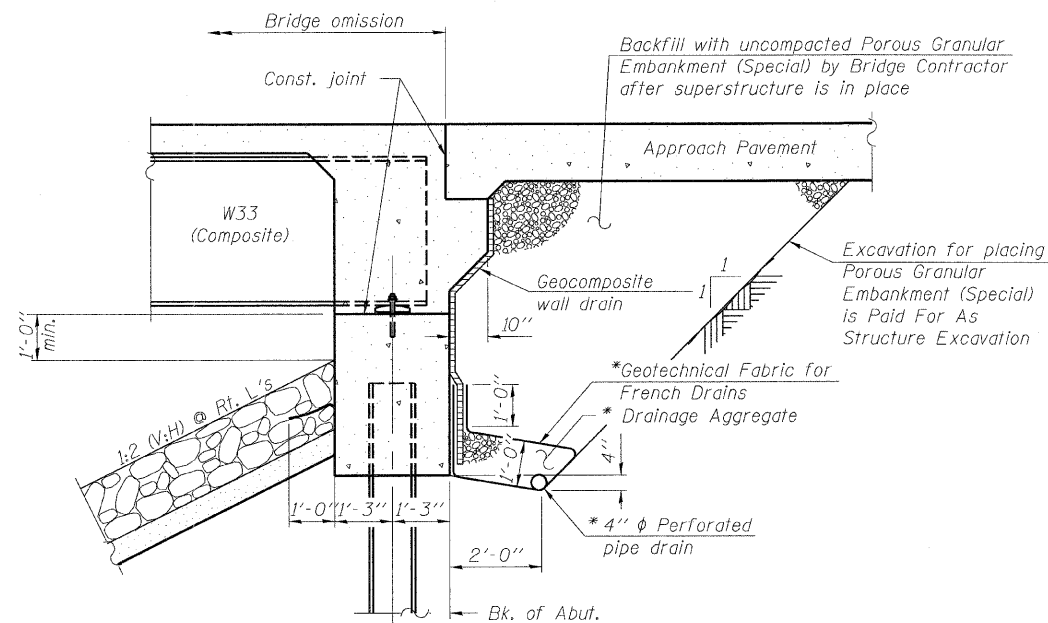


STATE OF ILLINOIS



TEMPORARY SOIL RETENTION SYSTEM

(Looking South - West Abutment)  
(Looking North - East Abutment)



SECTION THRU INTEGRAL ABUTMENT

(Horiz. dim. @ Rt. L's)

Note:

All drainage system components shall extend to 2'-0" from the end of each wingwall except an outlet pipe shall extend until intersecting with the toe of the side slopes. The pipes shall drain into concrete headwalls. (See article 601.05 of the Standard Specifications and Highway Standard 601101).

\* Included in the cost of Pipe Underdrains for Structures, 4"

NOTES

A cantilevered sheet piling design does not appear feasible and additional members or other retention systems may be necessary. The contractor shall submit a temporary soil retention system design, including plan details and calculations, for review and acceptance by the Engineer.

Dimensions are along centerline of Roadway.

ROUTE NO.	SECTION	COUNTY	TOTAL SHEETS	SHEET NO.	SHEET NO. 2
FAP 95	6BR-7	JASPER	546	242	18 SHEETS
FED. ROAD DIST. NO.	ILLINOIS	FED. AID PROJECT-	Contract No. 94437		

GENERAL NOTES

- Fasteners shall be AASHTO M164 Type 1, mechanically galvanized bolts. Bolts 7/8 in.  $\phi$ , holes 15/16 in.  $\phi$ , unless otherwise noted.
- Calculated weight of Structural Steel = 124,285 lb. (M270 Gr. 50)  
9,545 lb (M270 Gr. 36)
- No field welding is permitted except as specified in the contract documents.
- Reinforcement bars shall conform to the requirements of ASTM A 706 Gr 60.
- Layout of slope protection system may be varied to suit ground conditions in the field as directed by the Engineer.
- All Construction joints shall be bonded.
- The Inorganic Zinc Rich Primer / Acrylic / Acrylic Paint System shall be used for shop and field painting of new structural steel except where otherwise noted. The color of the final finish coat for all steel surfaces shall be gray, Munsell No 5B 7/1. See Special Provisions for "Cleaning and Painting New Metal Structures".
- The Contractor shall drive test piles to 110% of the Nominal Required Bearing Specified in production locations at West Abutment or approved by the Engineer before ordering the remainder of piles.
- Slip forming of the concrete parapets is not allowed.

TOTAL BILL OF MATERIAL

ITEM	UNIT	SUPER	SUB	TOTAL
Porous Granular Embankment (Special)	Cu. Yd.	-	150	150
Stone Riprap, Class A4	Sq. Yd.	-	655	655
Filter Fabric	Sq. Yd.	-	655	655
Removal of Existing Structures	Each	-	-	1
Structure Excavation	Cu. Yd.	-	200	200
Floor Drains	Each	10	-	10
Concrete Structures	Cu. Yd.	-	39.6	39.6
Concrete Superstructure	Cu. Yd.	147.9	-	147.9
Bridge Deck Grooving	Sq. Yd.	381	-	381
Protective Coat	Sq. Yd.	477	-	477
Furnishing and Erecting Structural Steel	L. Sum	1	-	1
Stud Shear Connectors	Each	1827	-	1827
Reinforcement Bars, Epoxy Coated	Pound	28,080	4,500	32,580
Furnishing Steel Piles HP 12x53	Foot	-	871	871
Driving Piles	Foot	-	871	871
Test Pile Steel HP 12x53	Each	-	1	1
Name Plates	Each	1	-	1
Temporary Soil Retention System	Sq. Ft.	-	529	529
Bar Splicers	Each	359	12	371
Geocomposite Wall Drain	Sq. Yd.	-	81.0	81.0
Pipe Underdrains for Structures, 4"	Foot	-	161	161
Pile Shoes	Each	-	14	14

ILLINOIS DEPARTMENT OF TRANSPORTATION  
GENERAL INFORMATION

IL RTE 33 OVER WEST FORK OF BIG MUDDY CREEK  
FAP RTE 95 - SECTION 6BR-7  
JASPER COUNTY  
STATION 729+72.50  
SN 040-0021

REVISIONS	
NAME	DATE

SCALE: VERT. \_\_\_\_\_  
HORIZ. \_\_\_\_\_  
DATE: 11/10/04

GREENE & BRADFORD, INC.  
OF SPRINGFIELD  
REGISTERED PROFESSIONAL ENGINEERS  
NO. 012560N

COMPUTER FILE NO. 012560N  
PROJECT 01256  
3/16/10-MDS

DRAWN BY: LANDREY  
DESIGNED BY: SANFORD  
CHECKED BY: WATKINS

FILE NAME = I:\01256\BRIDGES\11040\_0021\01256CON.dgn  
PLOT SCALE = 2"=1'-0"  
PLOT DATE = 3/17/2010  
PLOT TIME = 5:44:29 PM  
OPERATOR = FFRANKY