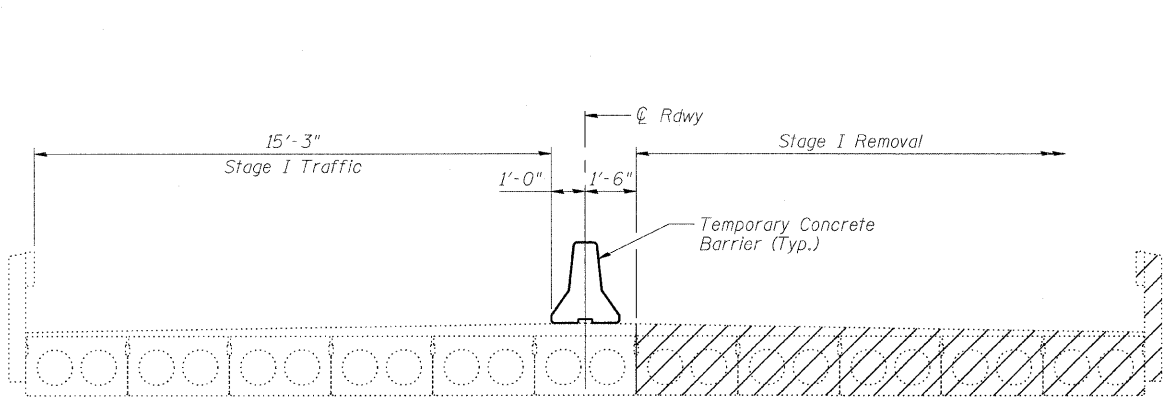
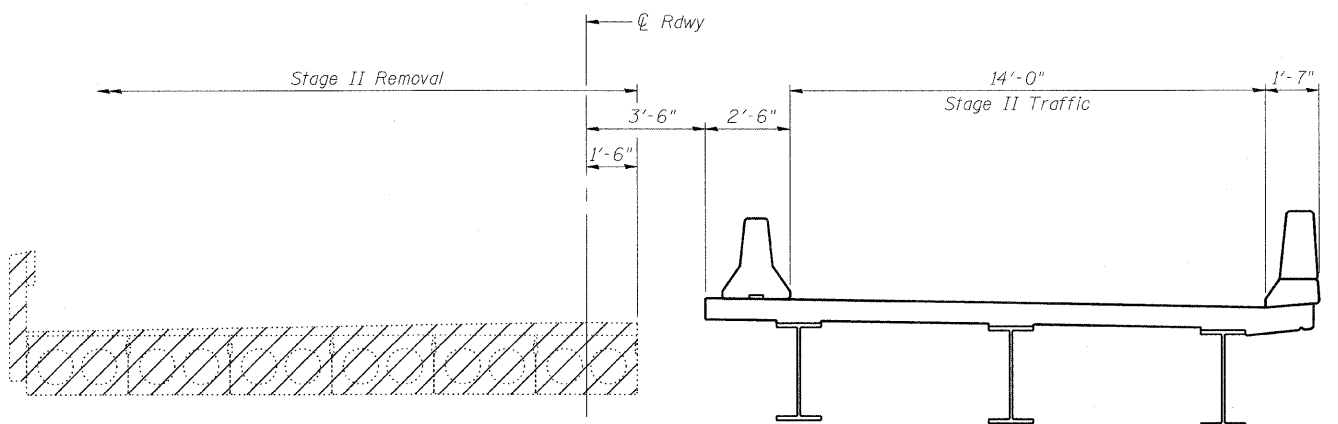


STATE OF ILLINOIS  
DEPARTMENT OF TRANSPORTATION

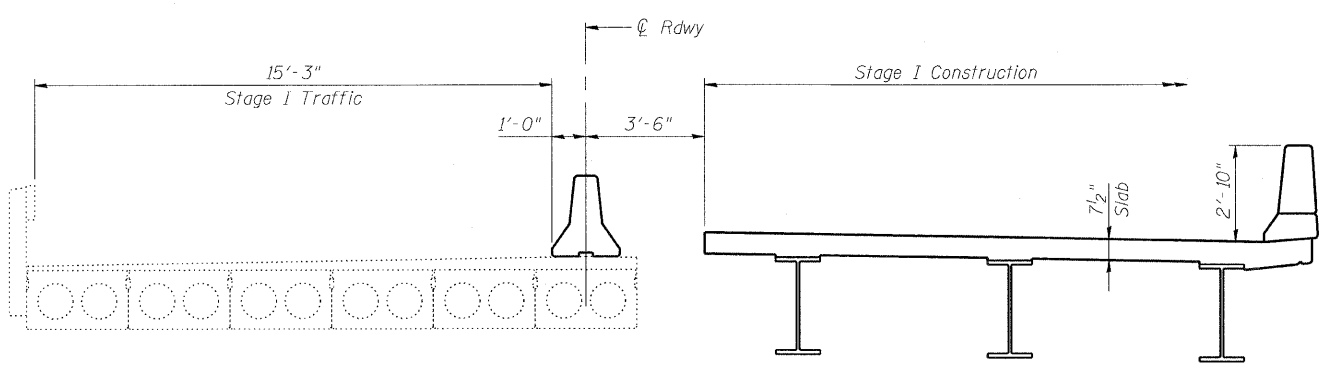
POLY. NO.	SECTION	COUNTY	TOTAL SHEETS	SHEET NO.	SHEET NO. 3 18 SHEETS
FAP 95	6BR-7	JASPER	546	243	
FED. ROAD DIST. NO.	ILLINOIS	FED. AID PROJECT	Contract No. 94437		



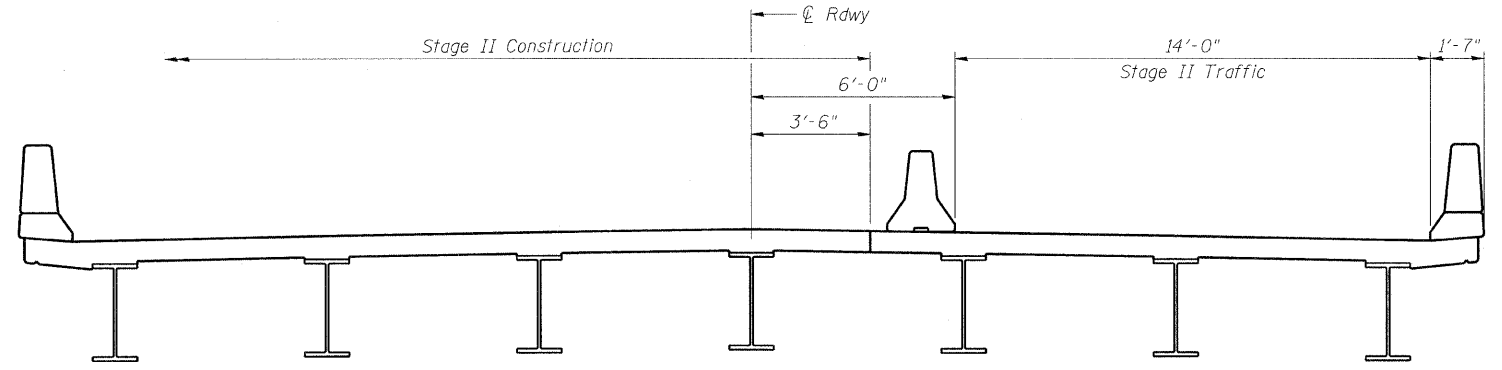
STAGE I REMOVAL



STAGE II REMOVAL



STAGE I CONSTRUCTION



STAGE II CONSTRUCTION

Note:  
Hatched areas indicate Removal of Existing Structures.  
All cross-sections are looking East.  
All dimensions are at right angles to CL Rdwy.  
For quantity of Temporary Concrete Barriers, see Roadway Plans.

REVISIONS	
NAME	DATE

ILLINOIS DEPARTMENT OF TRANSPORTATION  
**STAGE CONSTRUCTION**

IL RTE 33 OVER WEST FORK OF BIG MUDDY CREEK  
FAP RTE 95 - SECTION 6BR-7  
JASPER COUNTY  
STATION 729+72.50  
SN 040-0021

SCALE: VERT. \_\_\_\_\_  
HORIZ. \_\_\_\_\_  
DATE: 11/10/04

DRAWN BY: LANDREY  
DESIGNED BY: SANFORD  
CHECKED BY: WATKINS

COMPUTER FILE NO. 01256STC  
PROJECT 01256  
2/26/10-FAV

GREENE & BRADFORD, INC.  
OF SPRINGFIELD  
CORPORATE HEADQUARTERS  
500 SOUTH MAIN STREET  
SPRINGFIELD, ILLINOIS 62761  
PROFESSIONAL ENGINEERING CORPORATION  
OFFICE: 217-522-7777 FAX: 217-522-7777

FILE NAME = I:\PROJ\BRIDGES\SN040-0021\0256STC.dwg  
PLOT SCALE = 2:6667  
PLOT DATE = 3/17/2010  
PLOT TIME = 5:44:44 PM  
OPERATOR = FRANKY