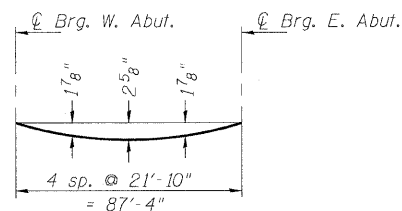


Note:
The above deflections are not to be used in the field if the engineer is working from the grade elevations adjusted for dead load deflections as shown below and on Sheet 6 of 18.

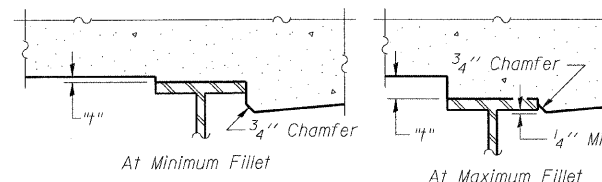


DEAD LOAD DEFLECTION DIAGRAM

(Includes weight of concrete only.)

ROUTE NO.	SECTION	COUNTY	TOTAL SHEETS	SHEET NO.
FAP 95	6BR-7	JASPER	546	245
FED. ROAD DIST. NO.		ILLINOIS	FED. AID PROJECT	
Contract No. 94437				

SHEET NO. 5
18 SHEETS



To determine "t": After all structural steel has been erected, elevations of the top flanges of the beams shall be taken at intervals shown below and on Sheet 6 of 18. These elevations subtracted from the "Theoretical Grade Elevations Adjusted For Dead Load Deflection" shown below, minus slab thickness, equals the fillet heights "t" above top flange of beams.

FILLET HEIGHTS

BEAM 1

Location	Station	Offset	Theoretical Grade Elevations	Theoretical Grade Elevations Adjusted For Dead Load Deflections
Bk. W. Abut.	72916.55	-18.750	583.680	583.680
CL Brg. W. Abut.	72918.01	-18.750	583.673	583.673
A	72928.01	-18.750	583.623	583.702
B	72938.01	-18.750	583.574	583.720
C	72948.01	-18.750	583.524	583.719
D	72958.01	-18.750	583.475	583.693
E	72968.01	-18.750	583.425	583.640
F	72978.01	-18.750	583.376	583.561
G	72988.01	-18.750	583.326	583.457
H	72998.01	-18.750	583.276	583.335
CL Brg. E. Abut.	73005.35	-18.750	583.240	583.240
Bk. E. Abut.	73006.80	-18.750	583.233	583.233

BEAM 2

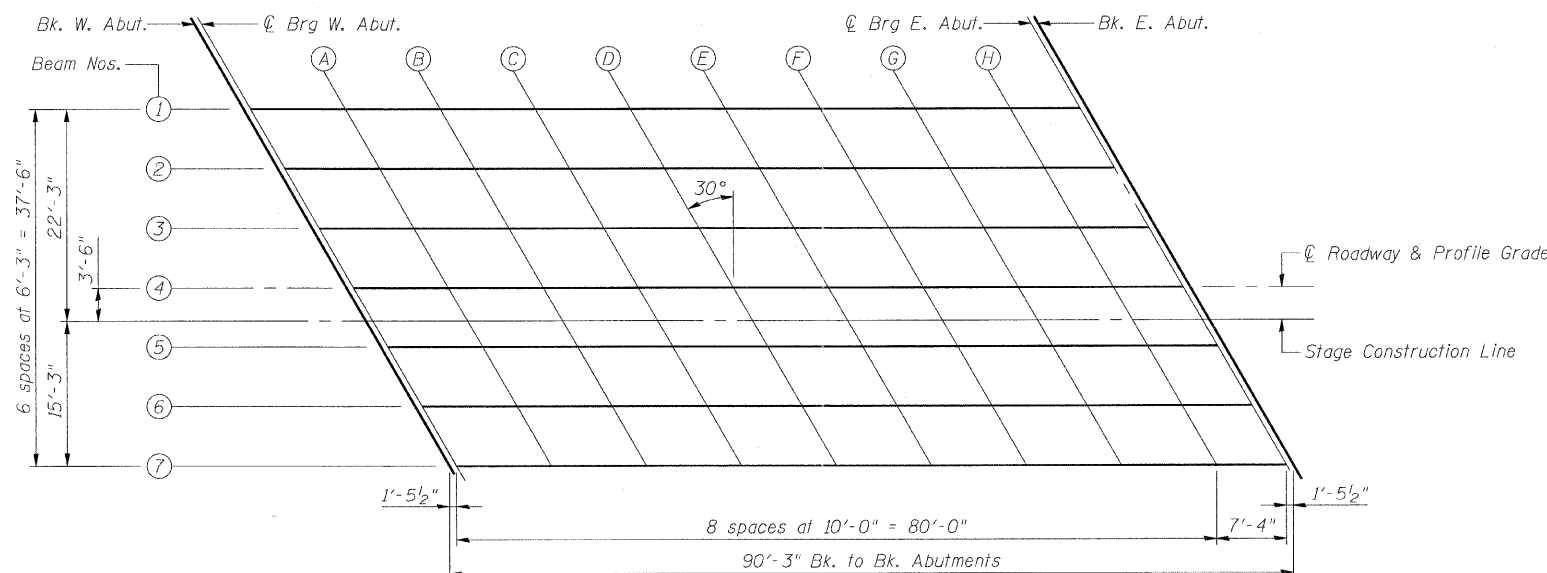
Location	Station	Offset	Theoretical Grade Elevations	Theoretical Grade Elevations Adjusted For Dead Load Deflections
Bk. W. Abut.	72920.16	-12.500	583.792	583.792
CL Brg. W. Abut.	72921.62	-12.500	583.785	583.785
A	72931.62	-12.500	583.736	583.815
B	72941.62	-12.500	583.686	583.832
C	72951.62	-12.500	583.637	583.831
D	72961.62	-12.500	583.587	583.805
E	72971.62	-12.500	583.537	583.752
F	72981.62	-12.500	583.488	583.673
G	72991.62	-12.500	583.438	583.570
H	73001.62	-12.500	583.389	583.448
CL Brg. E. Abut.	73008.95	-12.500	583.352	583.352
Bk. E. Abut.	73010.41	-12.500	583.345	583.345

BEAM 3

Location	Station	Offset	Theoretical Grade Elevations	Theoretical Grade Elevations Adjusted For Dead Load Deflections
Bk. W. Abut.	72923.77	-6.250	583.875	583.875
CL Brg. W. Abut.	72925.23	-6.250	583.868	583.868
A	72935.23	-6.250	583.818	583.897
B	72945.23	-6.250	583.768	583.915
C	72955.23	-6.250	583.719	583.913
D	72965.23	-6.250	583.669	583.888
E	72975.23	-6.250	583.620	583.835
F	72985.23	-6.250	583.570	583.755
G	72995.23	-6.250	583.521	583.652
H	73005.23	-6.250	583.471	583.530
CL Brg. E. Abut.	73012.56	-6.250	583.435	583.435
Bk. E. Abut.	73014.02	-6.250	583.427	583.427

BEAM 4, CENTERLINE & PROFILE GRADE LINE

Location	Station	Offset	Theoretical Grade Elevations	Theoretical Grade Elevations Adjusted For Dead Load Deflections
Bk. W. Abut.	72927.38	0.000	583.954	583.954
CL Brg. W. Abut.	72928.84	0.000	583.947	583.947
A	72938.84	0.000	583.898	583.977
B	72948.84	0.000	583.848	583.995
C	72958.84	0.000	583.799	583.993
D	72968.84	0.000	583.749	583.967
E	72978.84	0.000	583.700	583.915
F	72988.84	0.000	583.650	583.835
G	72998.84	0.000	583.600	583.732
H	73008.84	0.000	583.551	583.610
CL Brg. E. Abut.	73016.17	0.000	583.514	583.514
Bk. E. Abut.	73017.63	0.000	583.507	583.507



PLAN



REVISIONS		
NAME	DATE	

ILLINOIS DEPARTMENT OF TRANSPORTATION
TOP OF SLAB ELEVATIONS (1 OF 2)

IL RTE 33 OVER WEST FORK OF BIG MUDDY CREEK
FAP RTE 95 - SECTION 6BR-7
JASPER COUNTY
STATION 729+72.50
SN 040-0021

SCALE: VERT. _____
HORIZ. _____
DATE: 8/25/04

DRAWN BY: LANDREY
DESIGNED BY: SANFORD
CHECKED BY: WATKINS

GREENE & BRADFORD, INC.
OF SPRINGFIELD

COMPUTER FILE NO.
01256TOS

PROJECT 01256
2/26/10-FAV

FILE NAME = I:\PROJECTS\DRAWINGS\SN040-0021\01256TOS.dwg
PLOT SCALE = 1/8"=1'-0"
PLOT DATE = 3/7/2010
PLOT TIME = 5:54:44 PM
OPERATOR = FROTHV

E-S 4-30-97