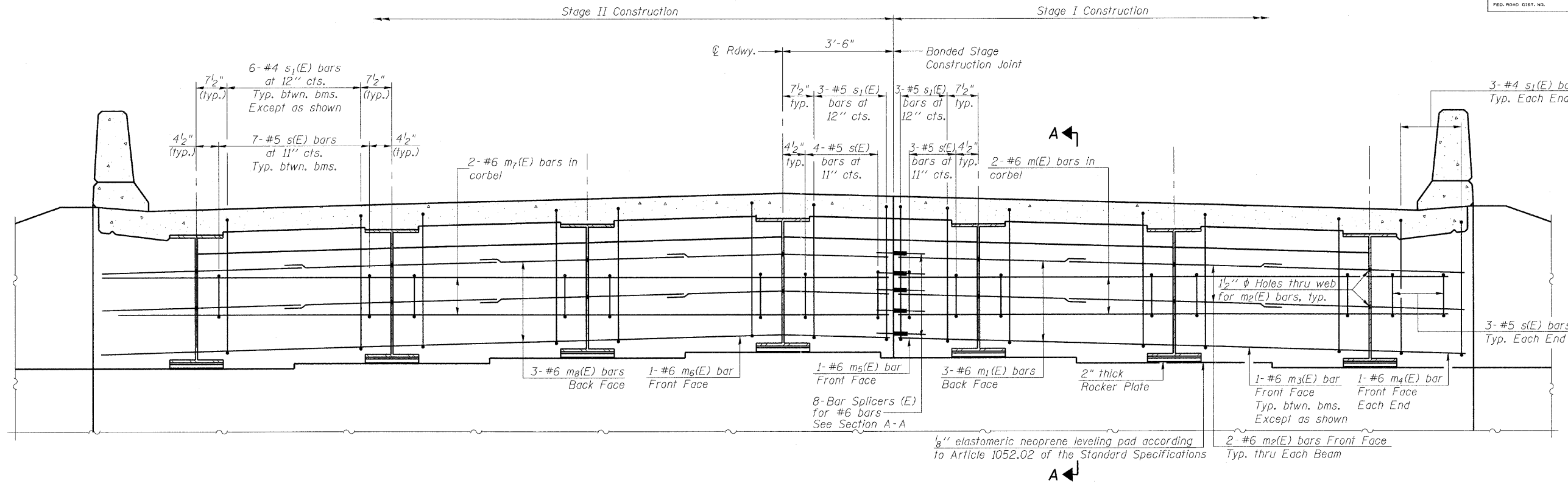


STATE OF ILLINOIS  
DEPARTMENT OF TRANSPORTATION

ROUTE NO.	SECTION	COUNTY	TOTAL SHEETS	SHEET NO.	SHEET NO. 9 18 SHEETS
FAP 95	6BR-7	JASPER	546	249	
FED. ROAD DIST. NO.	ILLINOIS	FED. AID PROJECT-			



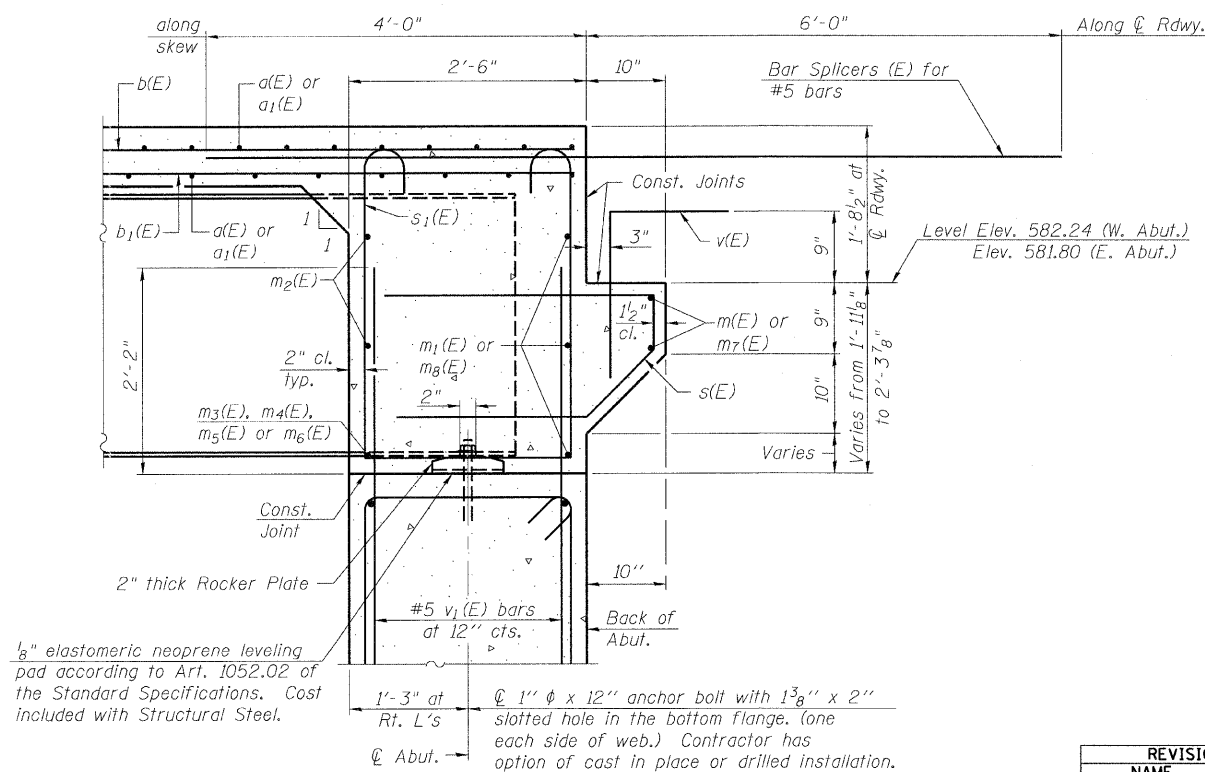
**DIAPHRAGM ELEVATION AT EAST ABUTMENT**

(Looking East)  
(West Abutment similar)

Notes:  
Reinforcement bars in diaphragm are billed with superstructure on sheet 8 of 18.  
Concrete in diaphragm is included with Concrete Superstructure on sheet 8 of 18.  
For details of bars s(E) & s<sub>1</sub>(E) see sheet 8 of 18.  
The s(E) and s<sub>1</sub>(E) bars shall be placed parallel to the beams. Spacing for these bars are shown at right angles to the beams.  
For anchor bolt details see sheet 11 of 18.

**MIN. BAR LAP**

#5 bar = 1'-8"  
#6 bar = 2'-9"



**SECTION A-A**

Dimensions at right angles to abutment, except as shown.

REVISIONS	
NAME	DATE

ILLINOIS DEPARTMENT OF TRANSPORTATION  
**DIAPHRAGM DETAILS**  
IL RTE 33 OVER WEST FORK OF BIG MUDDY CREEK  
FAP RTE 95 - SECTION 6BR-7  
JASPER COUNTY  
STATION 729+72.50  
SN 040-0021

SCALE: VERT.  
HORIZ.  
DATE: 8/25/04

DRAWN BY: LANDREY  
DESIGNED BY: SANFORD  
CHECKED BY: WATKINS

GREENE & BRADFORD, INC.  
OF SPRINGFIELD  
REGISTERED PROFESSIONAL ENGINEERS  
ILLINOIS LICENSE NO. 021-000000000  
PROFESSIONAL DESIGN FIRM NO. 0000000000  
018-188-0000 200-785-8277 01-1-0000 - copyright reserved

COMPUTER FILE NO.  
0125600  
PROJECT 01256  
2/26/10-FAV

FILE NAME = I:\01256\DRAWINGS\SMOAC\003\01256DD.dgn  
PLOT SCALE = 0.7500  
PLOT DATE = 3/17/2010  
PLOT TIME = 5:16:27 PM  
OPERATOR = FRONKY

SI-DSI 9-01-03