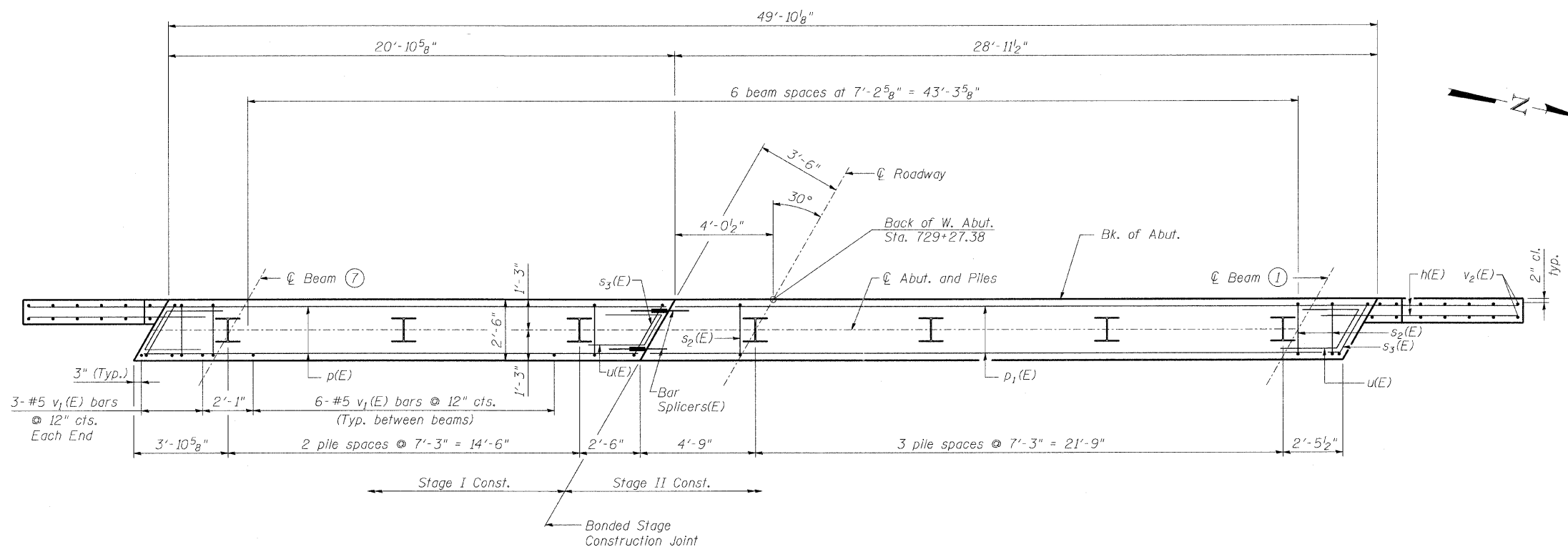


STATE OF ILLINOIS
DEPARTMENT OF TRANSPORTATION

ROUTE NO.	SECTION	COUNTY	LIST SHEETS	SHEET NO.	SHEET NO. 13 18 SHEETS
FAP 95	6BR-7	JASPER	546	253	
FED. ROAD DIST. NO.		ILLINOIS	FED. AID PROJECT		

Contract No. 94437



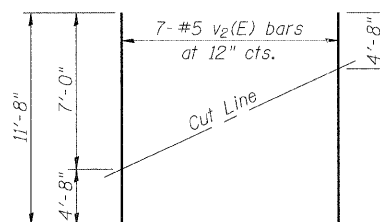
BILL OF MATERIAL

Bar	No.	Size	Length	Shape
h(E)	36	#5	8'-5"	—
p(E)	6	#7	20'-7"	—
p1(E)	6	#7	28'-8"	—
s2(E)	46	#5	11'-7"	□
s3(E)	3	#5	12'-5"	□
u(E)	12	#6	6'-8"	┘
v1(E)	98	#5	4'-4"	—
v2(E)	14	#5	11'-8"	—
Concrete Structures			Cu. Yd.	19.8
Reinforcement Bars, Epoxy Coated			Pound	2250
Structure Excavation			Cu. Yd.	100
Furnishing Steel Piles HP 12x53			Foot	402
Driving Piles			Foot	402
Test Pile Steel HP 12x53			Each	1
Pile Shoes			Each	7

PILE DATA

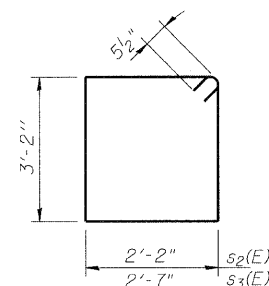
Type: Steel HP 12x53 with Pile Shoes
 Nominal Required Bearing: 418 Kips
 Factored Resistance Available: 139 Kips
 Est. Length: 67'
 No. Production Piles: 6
 No. Test Piles: 1

PLAN-CAP

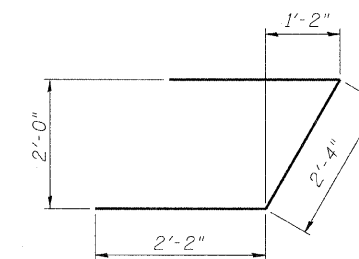


FIELD CUTTING DIAGRAM

Order v2(E) full length. Cut as shown and use remainder of bars in opposite face.



BARS s2(E) & s3(E)



BAR u(E)

REVISIONS	
NAME	DATE

ILLINOIS DEPARTMENT OF TRANSPORTATION
WEST ABUTMENT
 IL RTE 33 OVER WEST FORK OF BIG MUDDY CREEK
 FAP RTE 95 - SECTION 6BR-7
 JASPER COUNTY
 STATION 729+72.50
 SN 040-0021

SCALE: VERT. _____
 HORIZ. _____
 DATE: 8/25/04

DRAWN BY: LANDREY
 DESIGNED BY: SANFORD
 CHECKED BY: WATKINS

COMPUTER FILE NO. 01256WAB
 PROJECT 01256
 2/26/10-FAV

GREENE & BRADFORD, INC.
 OF SPRINGFIELD
 REGISTERED PROFESSIONAL ENGINEERS
 LICENSE NO. 0001
 PROFESSIONAL DESIGN FIRM NO. 0001
 PROFESSIONAL ENGINEERING CORPORATION
 615 N. 4TH ST., SUITE 201, SPRINGFIELD, IL 62761-1001