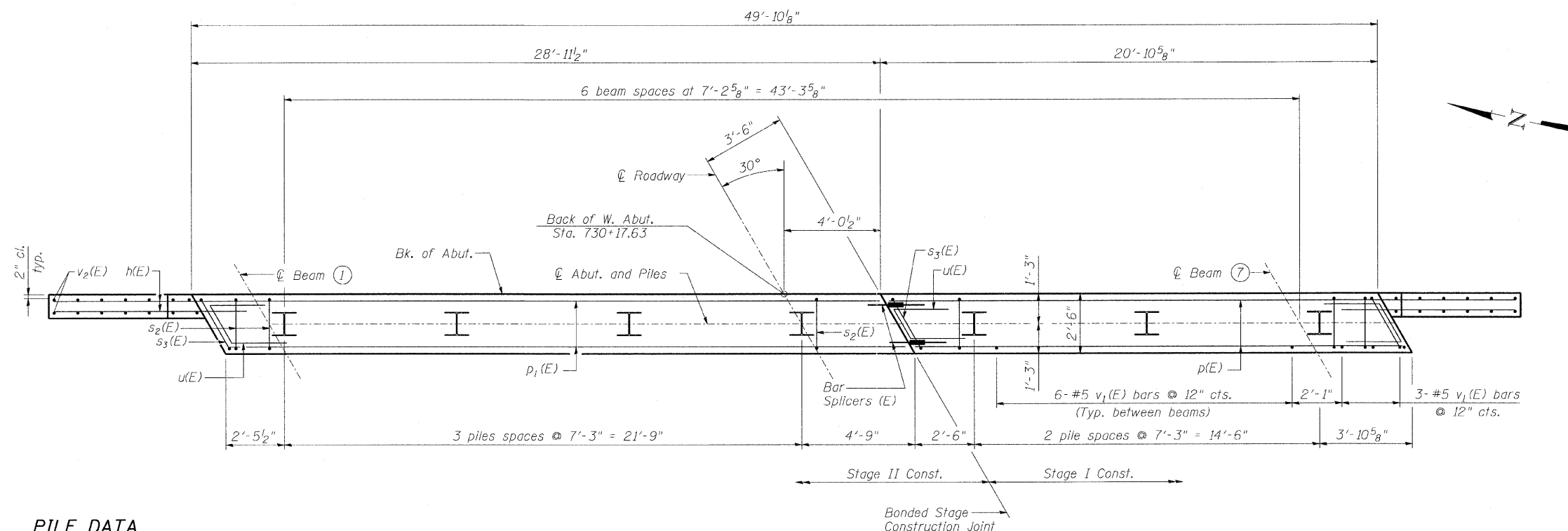


STATE OF ILLINOIS
DEPARTMENT OF TRANSPORTATION

ROUTE NO.	SECTION	COUNTY	TOTAL SHEETS	SHEET NO.	SHEET NO. 15 18 SHEETS
FAP 95	6BR-7	JASPER	546	255	
FED. ROAD DIST. NO.		ILLINOIS	FED. AID PROJECT-		

Contract No. 94437



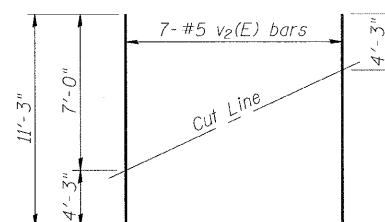
BILL OF MATERIAL

Bar	No.	Size	Length	Shape
h(E)	36	#5	8'-5"	—
p(E)	6	#7	20'-7"	—
D1(E)	6	#7	28'-8"	—
s2(E)	46	#5	11'-7"	□
s3(E)	3	#5	12'-5"	□
u(E)	12	#6	6'-8"	┘
v1(E)	98	#5	4'-4"	—
v2(E)	14	#5	11'-8"	—
Concrete Structures			Cu. Yd.	19.8
Reinforcement Bars, Epoxy Coated			Pound	2250
Structure Excavation			Cu. Yd.	100
Furnishing Steel Piles HP 12x53			Foot	469
Driving Piles			Foot	469
Pile Shoes			Each	7

PILE DATA

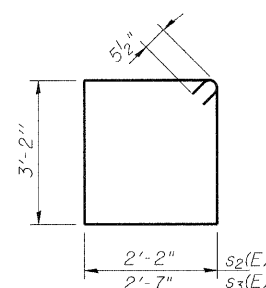
Type: Steel HP 12x53 with Pile Shoes
 Nominal Required Bearing: 418 Kips
 Factored Resistance Available: 139 Kips
 Est. Length: 67'
 No. Production Piles: 7
 No. Test Piles: 0

PLAN-CAP

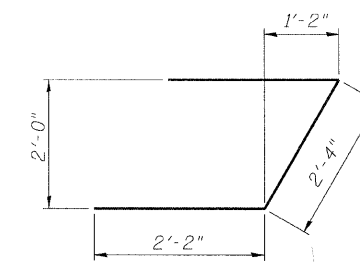


FIELD CUTTING DIAGRAM

Order v2(E) full length. Cut as shown and use remainder of bars in opposite face.



BARS s2(E) & s3(E)



BAR u(E)

REVISIONS	
NAME	DATE

ILLINOIS DEPARTMENT OF TRANSPORTATION
EAST ABUTMENT

IL RTE 33 OVER WEST FORK OF BIG MUDDY CREEK
 FAP RTE 95 - SECTION 6BR-7
 JASPER COUNTY
 STATION 729+72.50
 SN 040-0021

SCALE: VERT. DRAWN BY: LANDREY
 HORIZ. DESIGNED BY: SANFORD
 DATE: 3/25/04 CHECKED BY: WATKINS

GREENE & BRADFORD, INC.
 OF SPRINGFIELD
 REGISTERED PROFESSIONAL ENGINEERS
 PROFESSIONAL DESIGN FIRM NO. 01256
 601 783-8844, 800 785-5227 FAX 601 783-8844

COMPUTER FILE NO.
 01256EAB
 PROJECT 01256
 2/26/10-FAV