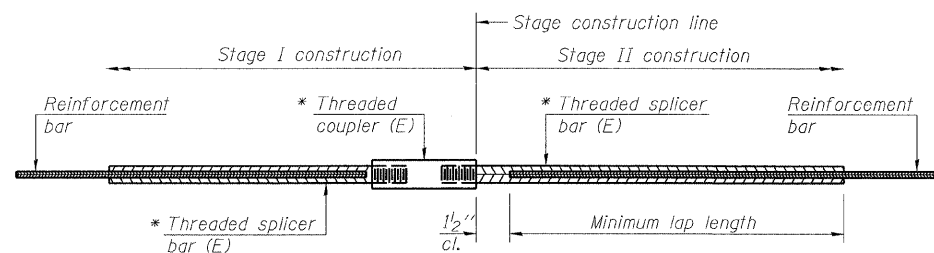


STATE OF ILLINOIS
DEPARTMENT OF TRANSPORTATION

ROUTE NO.	SECTION	COUNTY	TOTAL SHEETS	SHEET NO.	SHEET NO. 16 18 SHEETS
FAP 95	6BR-7	JASPER	546	256	
FED. ROAD DIST. NO.		ILLINOIS	FED. AID PROJECT-		

Contract No. 94437



STANDARD BAR SPLICER ASSEMBLY

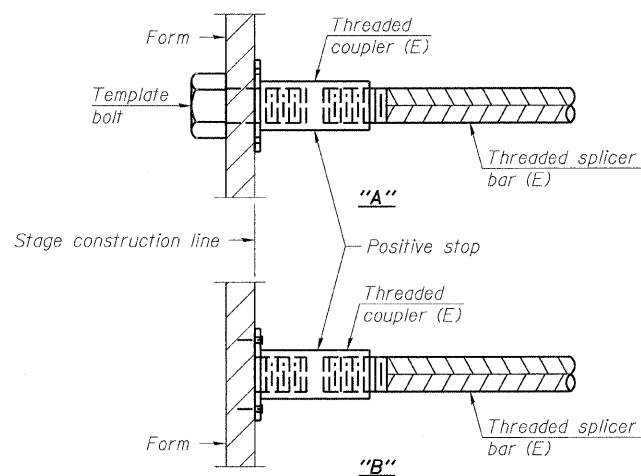
Bar size to be spliced	Minimum Lap Lengths			
	Table 1	Table 2	Table 3	Table 4
3, 4	1'-5"	1'-11"	2'-1"	2'-4"
5	1'-9"	2'-5"	2'-7"	2'-11"
6	2'-1"	2'-11"	3'-1"	3'-6"
7	2'-9"	3'-10"	4'-2"	4'-8"
8	3'-8"	5'-1"	5'-5"	6'-2"
9	4'-7"	6'-5"	6'-10"	7'-9"

Table 1: Black bar, 0.8 Class C
Table 2: Black bar, Top bar lap, 0.8 Class C
Table 3: Epoxy bar, 0.8 Class C
Table 4: Epoxy bar, Top bar lap, 0.8 Class C

Threaded splicer bar length = min. lap length + 1/2" + thread length

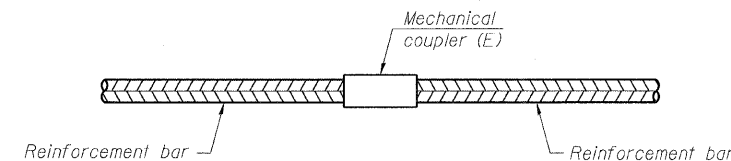
* Epoxy not required on Bar Splicer Assembly components used in conjunction with black bars.

Location	Bar size	No. assemblies required	Table for minimum lap length
Deck	#5	263	Table 4
Diaphragms	#6	16	Table 3
Abutments	#7	12	Table 3



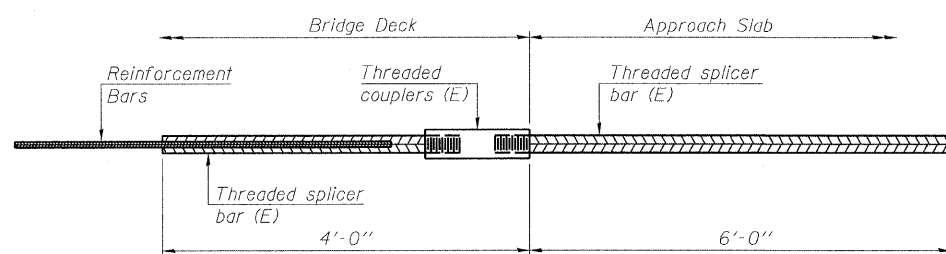
INSTALLATION AND SETTING METHODS

"A" : Set bar splicer assembly by means of a template bolt.
"B" : Set bar splicer assembly by nailing to wood forms or cementing to steel forms.
(E) : Indicates epoxy coating.



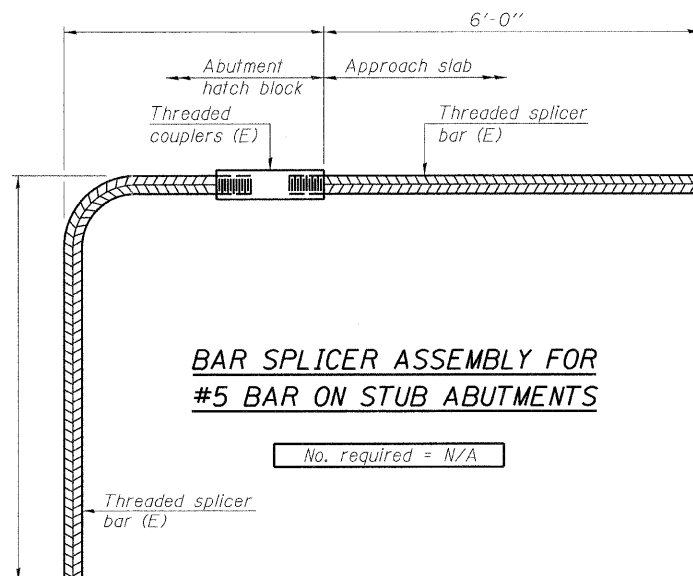
STANDARD MECHANICAL SPLICER

Location	Bar size	No. assemblies required



BAR SPLICER ASSEMBLY FOR #5 BAR ON INTEGRAL OR SEMI-INTEGRAL ABUTMENTS

No. required = 80



BAR SPLICER ASSEMBLY FOR #5 BAR ON STUB ABUTMENTS

No. required = N/A

NOTES

- Splicer bars shall be deformed with threaded ends and have a minimum 60 ksi yield strength.
- All reinforcement shall be lapped and tied to the splicer bars.
- Bar splicer assemblies shall be epoxy coated according to the requirements for reinforcement bars. See Section 508 of the Standard Specifications.
- See special provision for Mechanical Splicers.
- See approved list of bar splicer assemblies and mechanical splicers for alternatives.
- Load carrying components designated "NTR" shall conform to the Supplemental Requirements for Notch Toughness, Zone 2.

REVISIONS	
NAME	DATE

ILLINOIS DEPARTMENT OF TRANSPORTATION
BAR SPLICER ASSEMBLY DETAILS
IL RTE 33 OVER WEST FORK OF BIG MUDDY CREEK
FAP RTE 95 - SECTION 6BR-7
JASPER COUNTY
STATION 729+72.50
SN 040-0021

SCALE: VERT. _____
HORIZ. _____
DATE: 8/25/04

DRAWN BY: LANDREY
DESIGNED BY: SANFORD
CHECKED BY: WATKINS

COMPUTER FILE NO. 01256BSD
PROJECT 01256
2/26/10-FAV

GREENE & BRADFORD, INC.
OF SPRINGFIELD
CONSULTING ENGINEERS
PROFESSIONAL ENGINEERS
ILLINOIS LICENSE NO. 021-00000000
MEMBER OF THE NATIONAL ASSOCIATION OF CONSULTING ENGINEERS

FILE NAME = H:\0956\DRAWINGS\SN040-0021\01256BSD.dwg
PLOT SCALE = 1/8" = 1'-0"
PLOT DATE = 3/17/2010
PLOT TIME = 5:17:53 PM
OPERATOR = TFRANKY