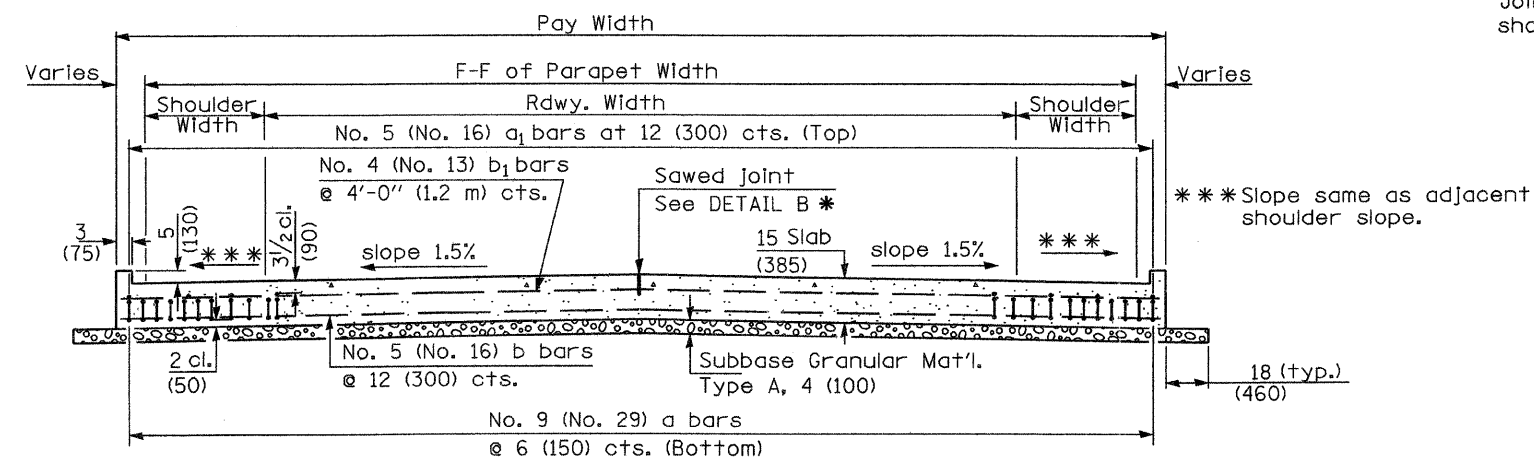
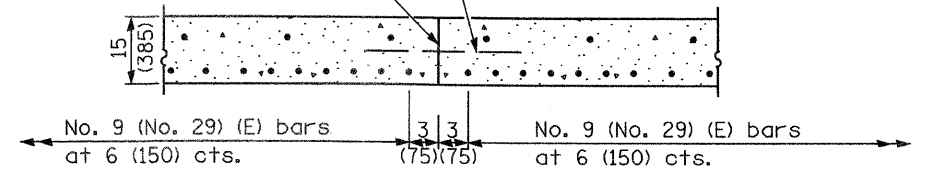


SECTION C-C
 ① Stagger No. 9 (No. 29) a bars as shown on plan - full width



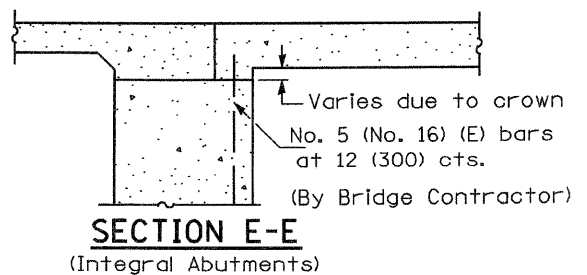
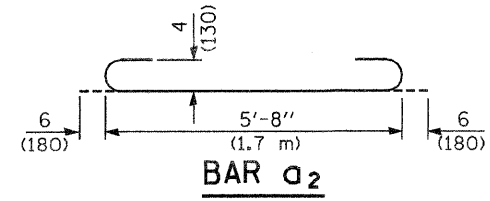
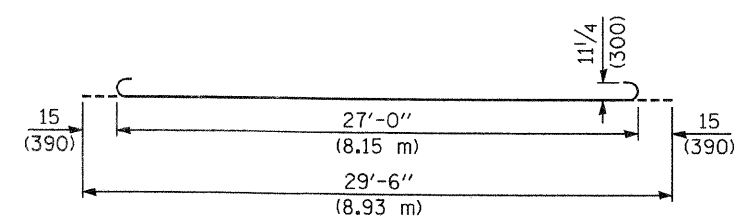
SECTION D-D
 (See Plan for Dimensions not shown)

Longitudinal Construction Joint in accordance with details shown on Standard 420001.

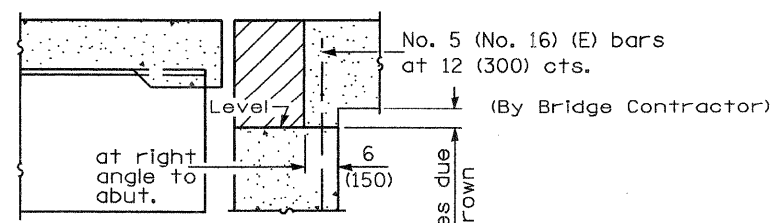


OPTIONAL LONGITUDINAL CONSTRUCTION JOINT

As approved by the Engineer, the Contractor may elect to reduce the widths of pour by use of the Optional Longitudinal Construction Joint shown. Joints shall be located at the edge of a traffic lane.



SECTION E-E
 (Integral Abutments)



SECTION E-E
 (Jointed Abutments)

DESIGN STRESSES
 $f_y = 60,000$ p.s.i. (400 MPa)
 $f'_c = 3,500$ p.s.i. (24 MPa)
 $n = 8.5$

BRIDGE APPROACH PAVEMENT			
(Sheet 3 of 4)			
CONTRACT NO.	COUNTY	TOTAL SHEETS	SHEET NO.
94437	JASPER	546	258C

Illinois Department of Transportation

APPROVED January 1, 2008
Ralph E. Anderson
 ENGINEER OF BRIDGES AND STRUCTURES

APPROVED January 1, 2008
Ken E. Han
 ENGINEER OF DESIGN AND ENVIRONMENT

ISSUED 1-1-07

0-19-11