

Bench Mark: B.M. #10. Sta. 908+19, 102' Rt. Survey Monument elevation 577.16

Existing Structure: S.N. 040-2003 built in 1983 as F.A. Route 95, Section 6BR-4. Existing structure is an 8'-0" x 3'-0" double barrel cast-in-place reinforced concrete box culvert 50'-0" out to out headwalls. The existing culvert is to be extended in-kind to 73'-3" out to out headwalls.

No Salvage.

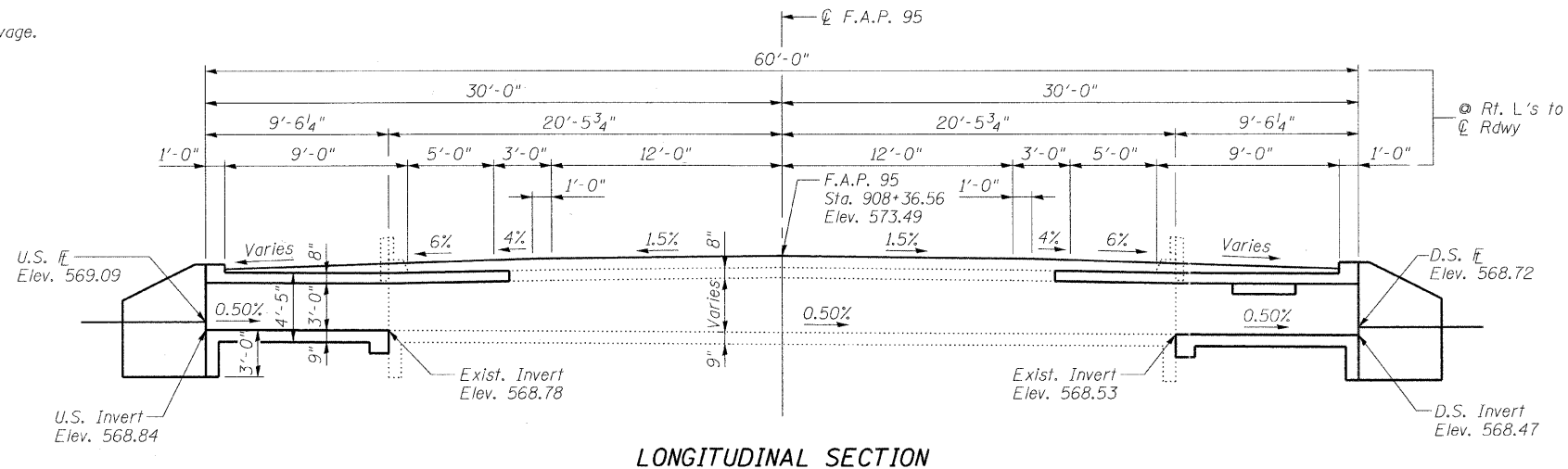
STATE OF ILLINOIS
DEPARTMENT OF TRANSPORTATION

ROUTE NO.	SECTION	COUNTY	TOTAL SHEETS	SHEET NO.	SHEET NO. 1
FAP 95	6RS-2	JASPER	546	259	5 SHEETS
FED. ROAD DIST. NO.		ILLINOIS	FED. AID PROJECT		

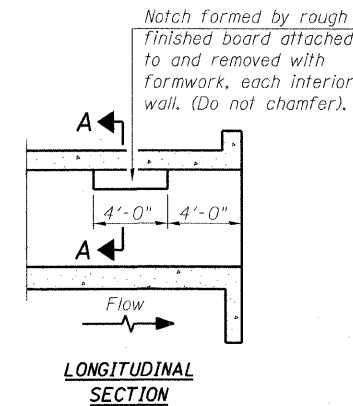
Contract No. 94437

GENERAL NOTES

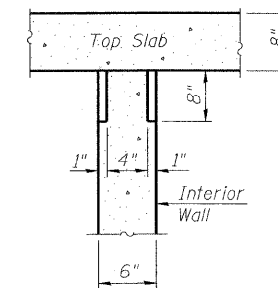
Reinforcement bars shall conform to the requirements of ASTM A 706 Gr 60.
Plan dimensions and details relative to existing plans are subject to nominal construction variations. The Contractor shall field verify existing dimensions and details affecting new construction and make necessary approved adjustments prior to construction or ordering of materials. Such variations shall not be cause for additional compensation for a change in scope of the work, however, the Contractor will be paid for the quantity actually furnished at the unit price bid for the work.
All Construction joints shall be bonded.
A distance of half the length of the wingwall but not less than six feet of the barrel shall be poured monolithically with the wingwalls.



LONGITUDINAL SECTION



LONGITUDINAL SECTION



SECTION A-A

**PHOEBE NESTING
SITE DETAILS**
(Downstream End Only)

STATION 908+36.56
RE-BUILT 20... BY
STATE OF ILLINOIS
F.A.P. RTE. 95 SEC. 6RS-2
LOADING HS20
STR. NO. 040-2003

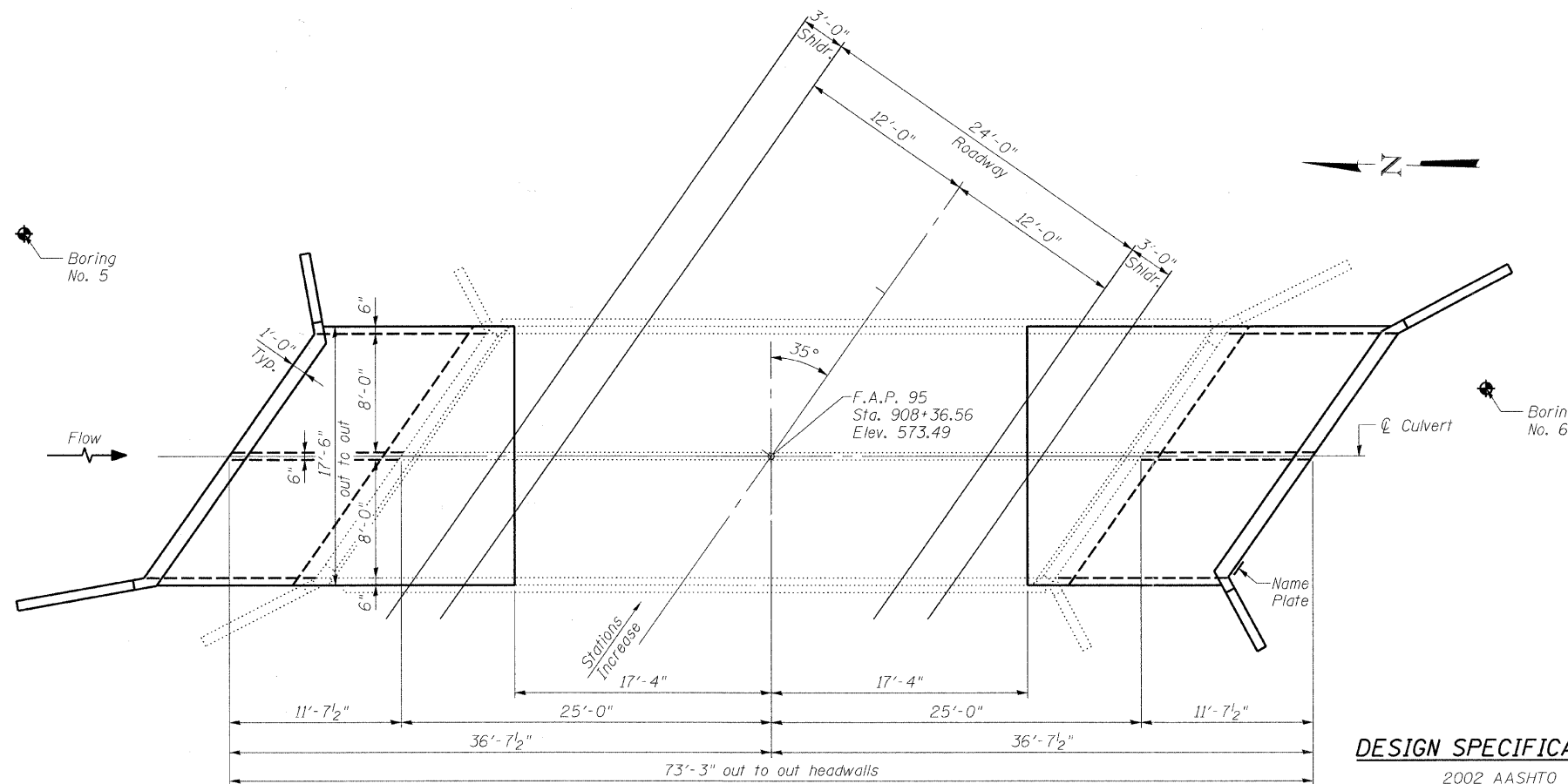
NAME PLATE

See Std. 515001

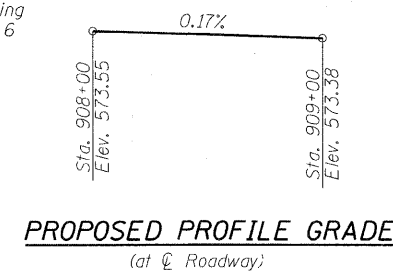
Existing name plate shall be cleaned and relocated adjacent to new name plate. Cost included with "Name Plates".

TOTAL BILL OF MATERIAL

ITEM	UNIT	TOTAL
Concrete Removal	Cu. Yd.	8.4
Expansion Bolts 3/4 inch	Each	60
Concrete Box Culverts	Cu. Yd.	40.8
Reinforcement Bars	Pound	12,110
Name Plates	Each	1



PLAN



PROPOSED PROFILE GRADE
(at Roadway)

DESIGN SPECIFICATIONS

2002 AASHTO

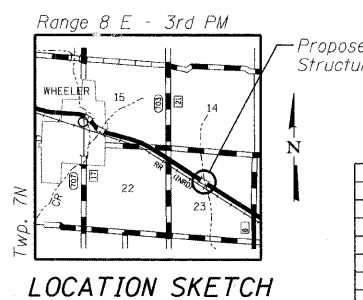
LOADING HS20-44

Allow 50#/sq. ft. for future wearing surface.

DESIGN STRESSES

FIELD UNITS

$f'_c = 3,500$ psi
 $f_y = 60,000$ psi (reinforcement)



LOCATION SKETCH

APPROVED
FOR STRUCTURAL ADEQUACY ONLY
Ralph E. Anderson (SE)
ENGINEER OF BRIDGES AND STRUCTURES



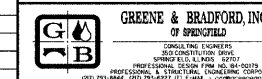
ILLINOIS DEPARTMENT OF TRANSPORTATION

GENERAL PLAN

IL RTE 33 OVER BRANCH LAWS CREEK
FAP RTE 95 - SECTION 6RS-2
JASPER COUNTY
STATION 908+36.56
SN 040-2003

SCALE: VERT. HORIZ.
DATE: 5/19/04

DRAWN BY: LANDREY
DESIGNED BY: SANFORD
CHECKED BY: WATKINS



COMPUTER FILE NO.
SN040-2003.GPE
PROJECT 01256
2/26/10-FAV

REVISIONS	
NAME	DATE

FILE NAME = J:\01256\DRAWINGS\SN040-2003\SN040-2003_GPE.dgn
PLOT SCALE = 5:3333
PLOT TIME = 3:24:04 PM
OPERATOR = JF-CNKV