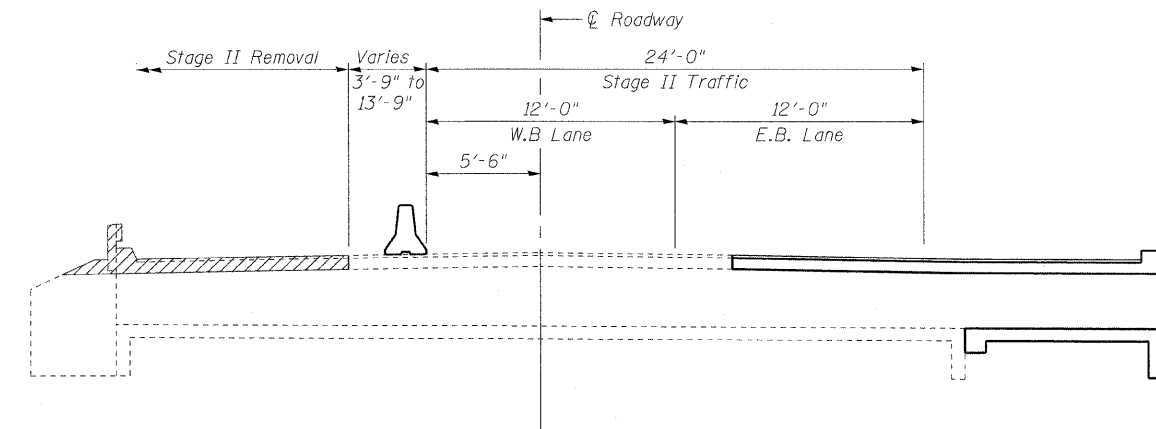
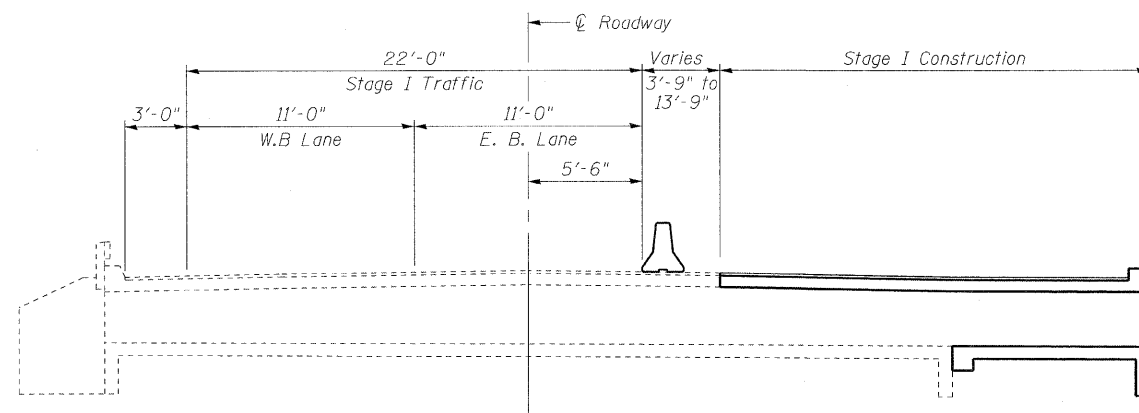


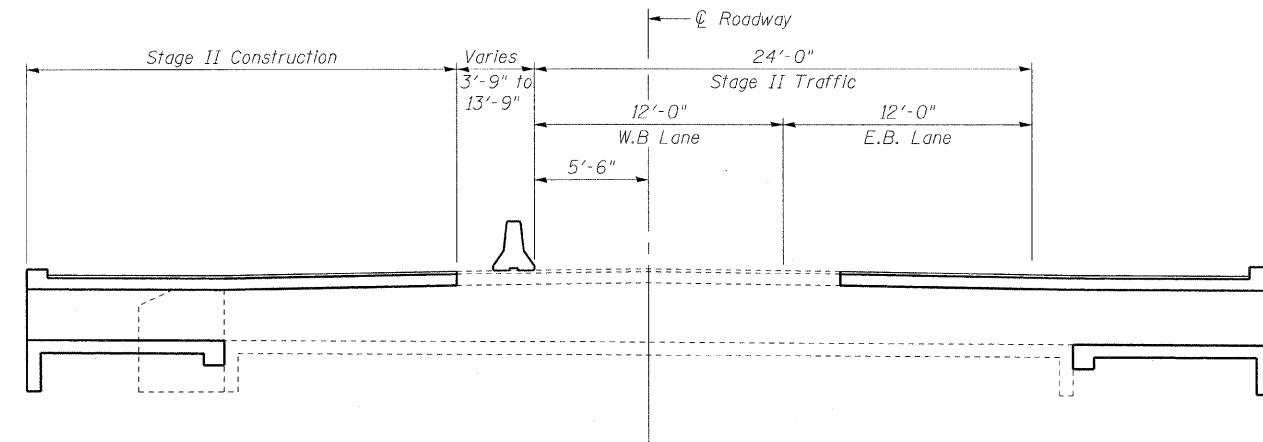
**STAGE I REMOVAL**



**STAGE II REMOVAL**



**STAGE I CONSTRUCTION**



**STAGE II CONSTRUCTION**

*Notes:*  
 Hatched area indicates "Concrete Removal".  
 All dimensions are at right angles to  $\varnothing$  Roadway, unless otherwise noted.  
 All cross-sections are looking East.  
 For quantity of Temporary Concrete Barrier, see Roadway plans.

ILLINOIS DEPARTMENT OF TRANSPORTATION  
**STAGE CONSTRUCTION DETAILS**

IL RTE 33 OVER BRANCH LAWS CREEK  
 FAP RTE 95 - SECTION 6RS-2  
 JASPER COUNTY  
 STATION 908+36.56  
 SN 040-2003

REVISIONS	
NAME	DATE

SCALE: VERT. \_\_\_\_\_  
 HORIZ. \_\_\_\_\_  
 DATE: 12/17/04

DRAWN BY: LANDREY  
 DESIGNED BY: SANFORD  
 CHECKED BY: WATKINS

GREENE & BRADFORD, INC.  
 OF SPRINGFIELD  
 CONSULTING ENGINEERS  
 PROFESSIONAL ENGINEERING FIRM NO. 062-0016  
 205 W. 8th St., Springfield, IL 62761-1000

COMPUTER FILE NO.  
 SN040-2003.STG  
 PROJECT 01256  
 2/26/10-FAV