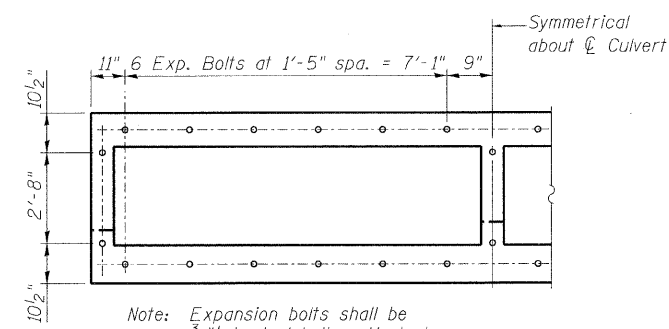
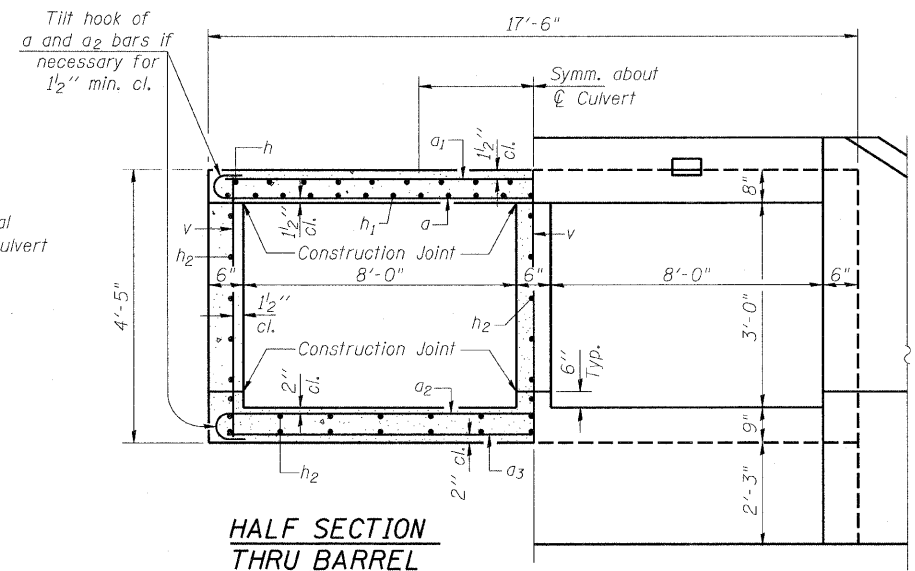


EXISTING PARTIAL LONG SECTION
(Dimensions are along C Culvert)



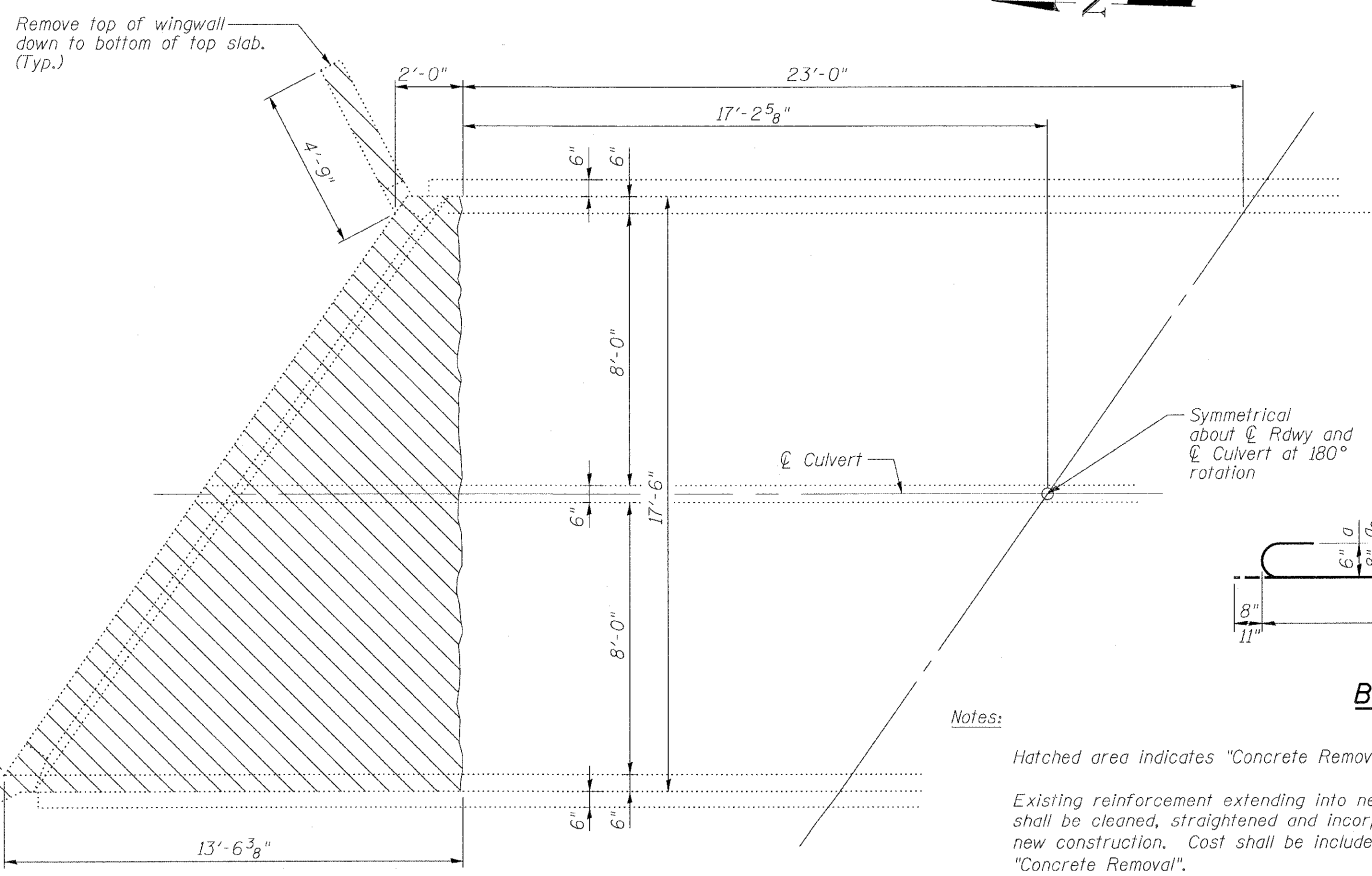
Note: Expansion bolts shall be 3/4" hooked bolts. Hooked bolts shall extend a minimum of 9" into new concrete.

EXPANSION BOLT PLACEMENT DETAIL



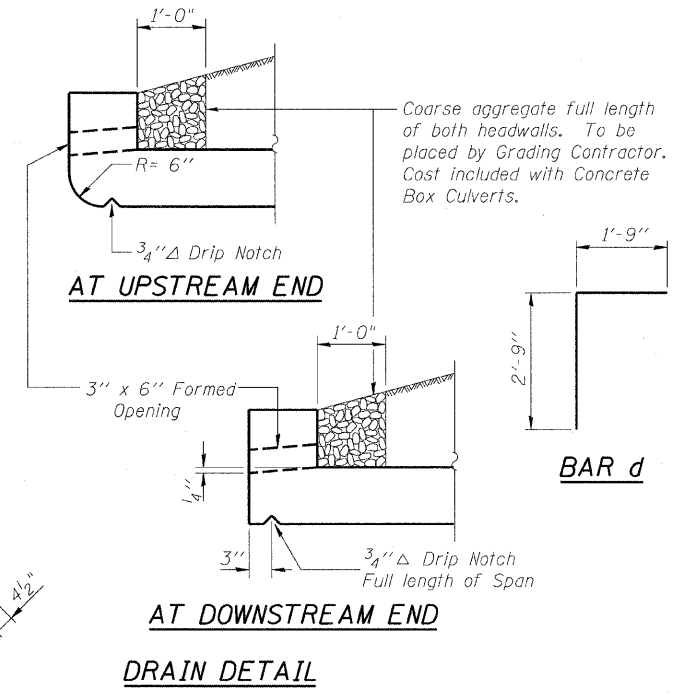
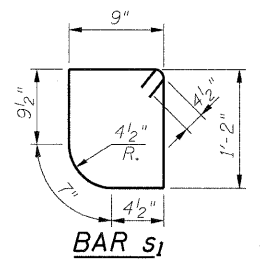
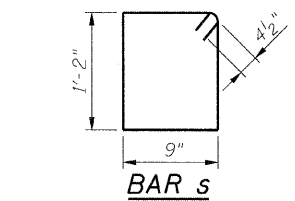
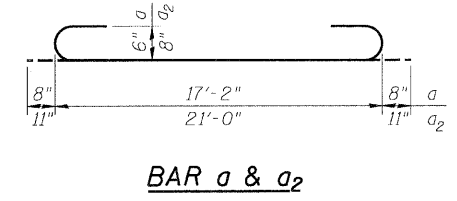
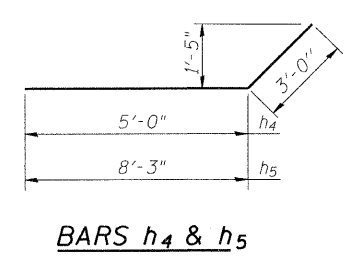
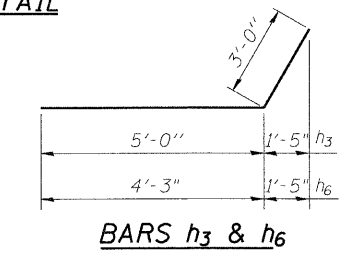
HALF SECTION THRU BARREL

HALF END ELEVATION



EXISTING PARTIAL PLAN SHOWING REMOVAL

Notes:
Hatched area indicates "Concrete Removal".
Existing reinforcement extending into new construction shall be cleaned, straightened and incorporated into the new construction. Cost shall be included with the cost of "Concrete Removal".
Existing reinforcement not extending into new construction shall be cut-off flush and covered with a 2" layer of cement grout. Cost shall be included with the cost of "Concrete Removal".



DRAIN DETAIL

REVISIONS	
NAME	DATE

ILLINOIS DEPARTMENT OF TRANSPORTATION
CULVERT DETAILS
IL RTE 33 OVER BRANCH LAWS CREEK
FAP RTE 95 - SECTION 6RS-2
JASPER COUNTY
STATION 908+36.56
SN 040-2003

SCALE: VERT. _____
HORIZ. _____
DATE: 5/19/04

DRAWN BY: LANDREY
DESIGNED BY: SANFORD
CHECKED BY: WATKINS

COMPUTER FILE NO. SN040-2003.REM
PROJECT 01256
2/26/10-FAV

GREENE & BRADFORD, INC.
OF SPRINGFIELD
CONSULTING ENGINEERS
AND ARCHITECTS
PROFESSIONAL DESIGN FIRM NO. 00076
1001 EAST WASHINGTON ST., SPRINGFIELD, ILL. 62761
TEL: 217-223-1100 FAX: 217-223-1101