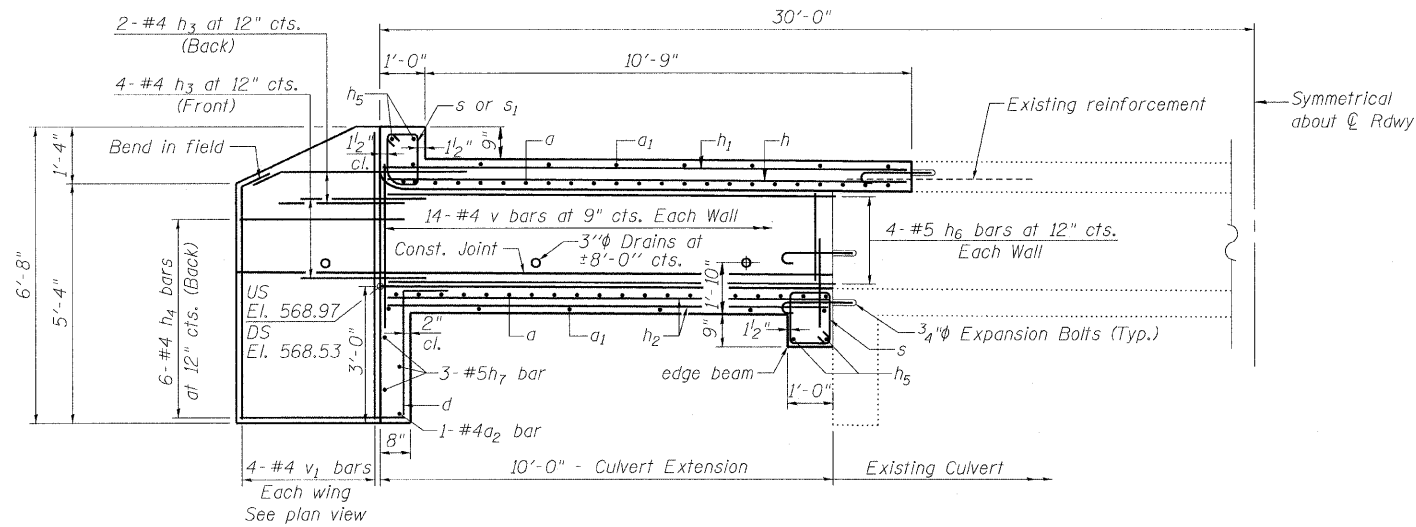


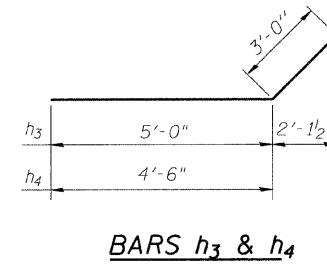
STATE OF ILLINOIS
DEPARTMENT OF TRANSPORTATION

ROUTE NO.	SECTION	COUNTY	TOTAL SHEETS	SHEET NO.	SHEET NO. 3 4 SHEETS
FAP 95	6RS-2	JASPER	546	266	
FED. ROAD DIST. NO. 7		ILLINOIS	FED. AID PROJECT-		

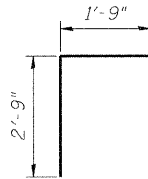
Contract No. 94437



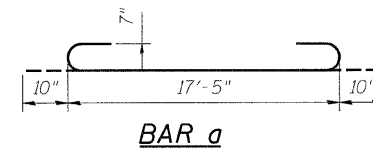
HALF LONG SECTION



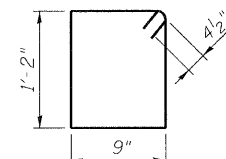
BARS h_3 & h_4



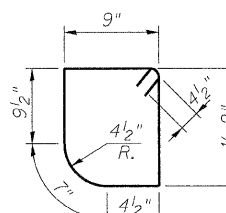
BAR d



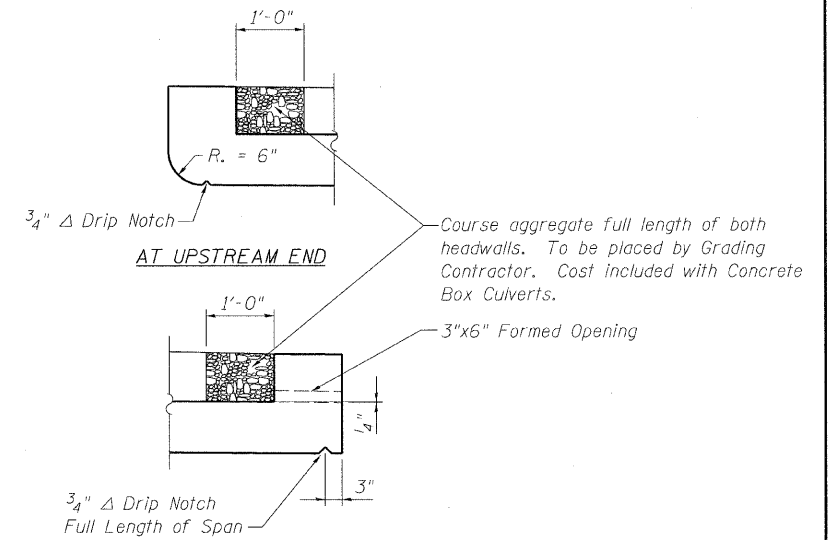
BAR a



BAR s



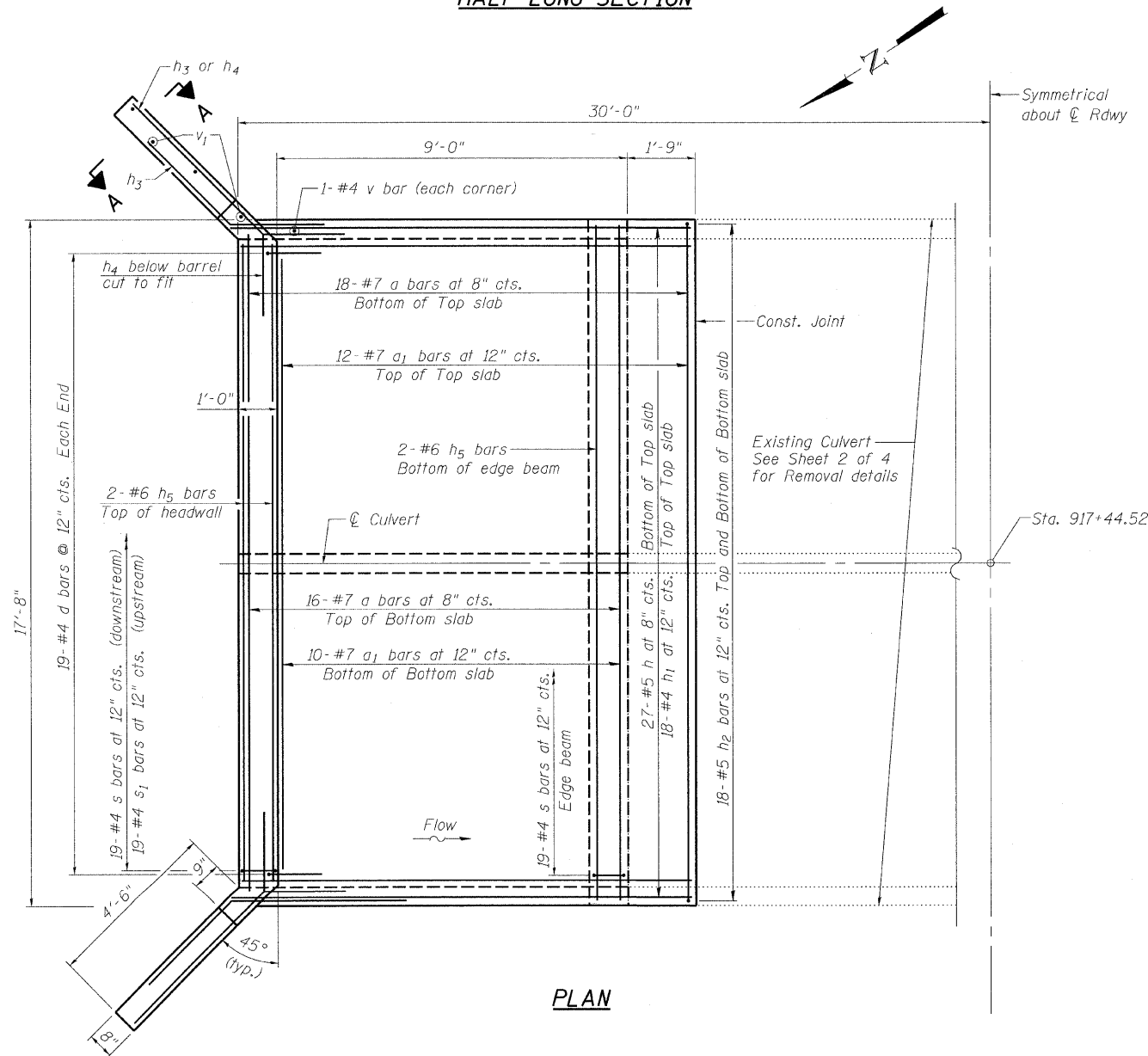
BAR s_1



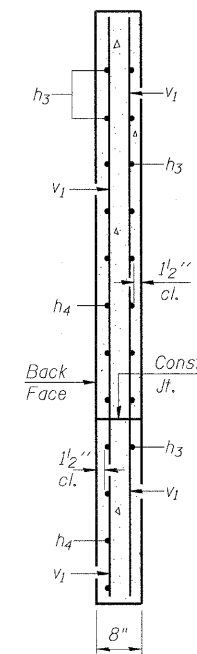
AT DOWNSTREAM END
DRAIN DETAIL

TWO EXTENSIONS
BILL OF MATERIAL

Bar	No.	Size	Length	Shape
a	68	#7	19'-1"	
a_1	44	#7	17'-5"	
a_2	2	#4	17'-5"	
d	38	#4	4'-6"	
h	54	#5	11'-6"	
h_1	36	#4	11'-6"	
h_2	72	#5	9'-9"	
h_3	24	#4	8'-0"	
h_4	24	#4	7'-6"	
h_5	8	#6	17'-0"	
h_6	24	#4	9'-9"	
h_7	6	#5	17'-0"	
s	57	#4	4'-7"	
s_1	19	#4	4'-5"	
v	88	#4	3'-5"	
v_1	16	#4	6'-4"	
Concrete Box Culverts			Cu. Yd.	31.4
Reinforcement Bars			Pound	7230



PLAN



SECTION A-A

REVISIONS	
NAME	DATE

ILLINOIS DEPARTMENT OF TRANSPORTATION
CULVERT DETAILS
IL RTE 33 OVER DRAINAGE DITCH
FAP 95
SECTION 6RS-2
STA. 917+44.52
JASPER COUNTY
S.N. 040-8300

SCALE: VERT.
HORIZ.
DATE: 5/19/04

DRAWN BY: LANDREY
DESIGNED BY: SANFORD
CHECKED BY: WATKINS

GREENE & BRADFORD, INC.
OF SPRINGFIELD
CONSULTING ENGINEERS
PROFESSIONAL ENGINEERS
REGISTERED IN ILLINOIS
SINCE 1914, 2011-TS-0027, P.E. No. 123456789

COMPUTER FILE NO.
SN040-8300
PROJECT 01256
2/26/10-FAV

1/2" = 1'-0"