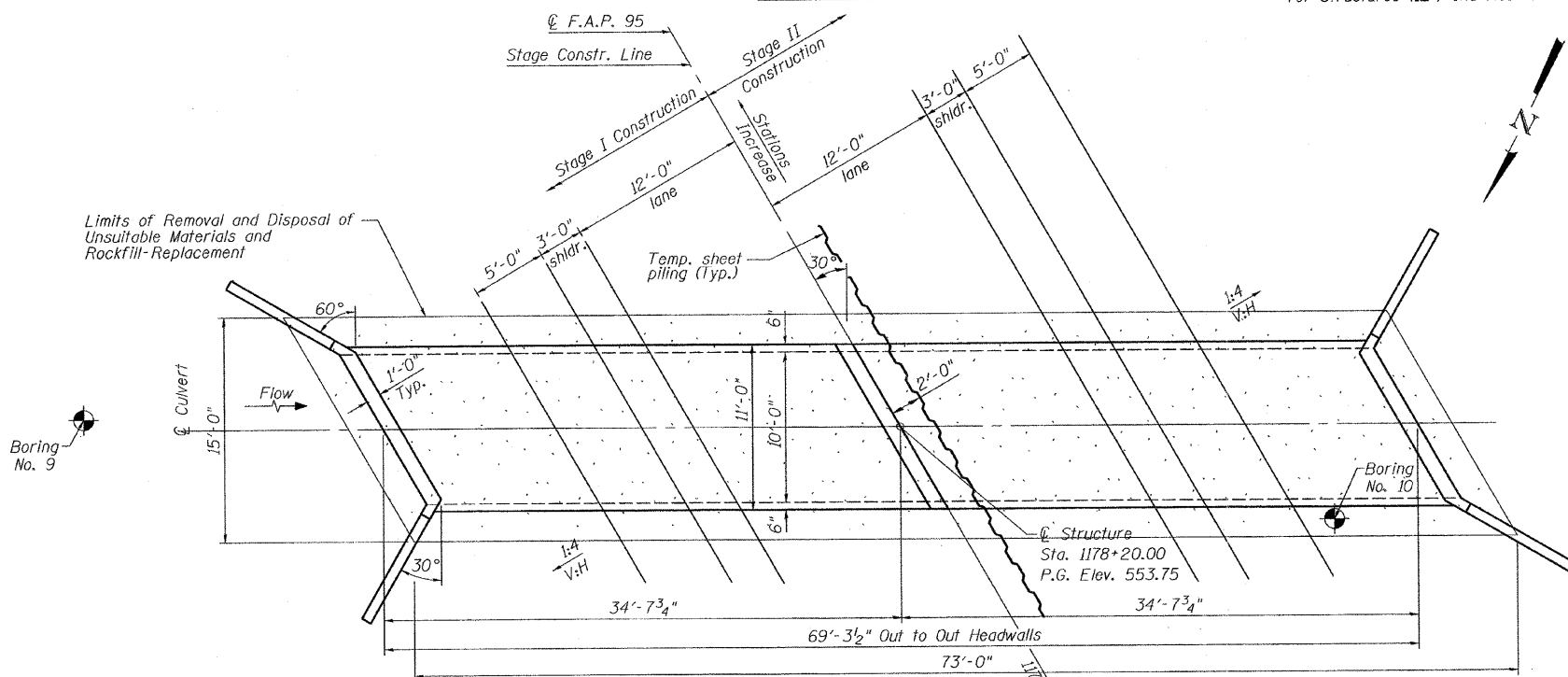
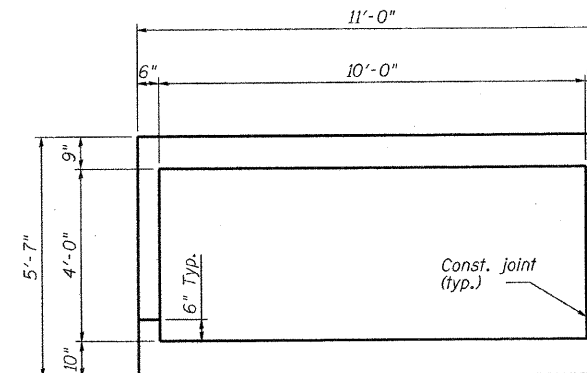
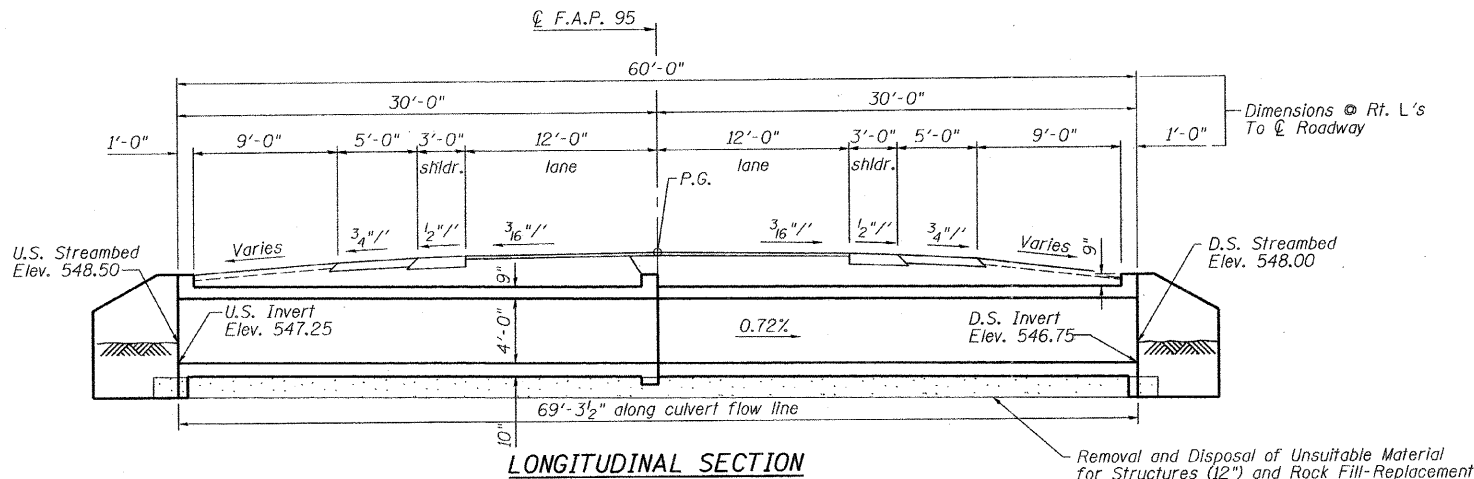


Bench Mark: B.M. #20 Sta. 1178+12.93' Rt.
Survey monument, Elev. 550.81.
Existing Structure: None.
No salvage.

STATE OF ILLINOIS
DEPARTMENT OF TRANSPORTATION

ROUTE NO.	SECTION	COUNTY	TOTAL SHEETS	SHEET NO.	SHEET NO. 1 6 SHEETS
FAP 95	*	JASPER	546	268	
FED. ROAD DIST. NO.	ILLINOIS	FED. AID PROJECT-			

*(5,6)Y, RS-2, 6BR-7
Contract #94437



WATERWAY INFORMATION

Freq. Year	Structure	Discharge (cfs)		Opening (sq ft)		Natural H.W.E.		Headwater Elevation		
		Exist.	Prop.	Exist.	Prop.	Exist.	Prop.	Exist.	Prop.	
10	Bridge	103	103	24.1	26.4	550.89	-0.04	0.02	550.85	550.91
	Over-the-Road	0	0	0.0	0.0					
	Total	103	103	24.1	26.4					
Design 50	Bridge	153	153	32.7	30.0	551.76	0.03	0.26	551.79	552.02
	Over-the-Road	0	0	0.0	0.0					
	Total	153	153	32.7	30.0					
Base 100	Bridge	173	173	33.1	30.0	551.81	0.16	0.51	551.97	552.32
	Over-the-Road	0	0	0.0	0.0					
	Total	173	173	33.1	30.0					
Max. Calc. 500	Bridge	218	218	34.2	30.0	551.91	0.48	1.10	552.39	553.01
	Over-the-Road	0	0	0.0	0.0					
	Total	218	218	34.2	30.0					

LOADING HS20-44
Allow 50#/sq. ft. for future wearing surface.

DESIGN SPECIFICATIONS
2002 AASHTO

DESIGN STRESSES

FIELD UNITS

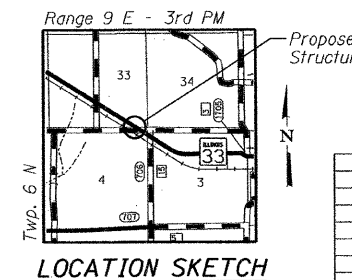
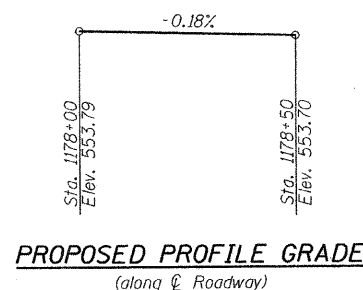
$f_c = 3,500$ psi
 $f_y = 60,000$ psi (reinforcement)

SEISMIC DATA

Seismic Performance Category (SPC) = A
Bedrock Acceleration Coefficient (A) = 0.073g
Site Coefficient (S) = 1.0

TOTAL BILL OF MATERIAL

ITEM	UNIT	TOTAL
Concrete Box Culverts	Cu. Yd.	63.6
Reinforcement Bars	Pound	15,970
Temporary Sheet Piling	Sq. Ft.	630
Bar Splicers	Each	48
Structure Excavation	Cu Yd	300
Removal and Disposal of Unsuitable Materials for Structures	Cu Yd	41
Rock Fill - Replacement	Ton	83



REVISIONS	
NAME	DATE

ILLINOIS DEPARTMENT OF TRANSPORTATION
GENERAL PLAN
F.A.P. 95 (IL RTE 33) OVER DRAINAGE DITCH
SECTION (5,6)Y, RS-2, 6BR-7
STA. 1178+20.00
JASPER COUNTY
S.N. 040-2011

SCALE: VERT. 1"=10'
HORIZ. 1"=40'
DATE: 11/22/04

DRAWN BY: LANDREY
DESIGNED BY: SANFORD
CHECKED BY: TRELLO

COMPUTER FILE NO. 01256GPE
PROJECT 01256
3/11/10 MDS