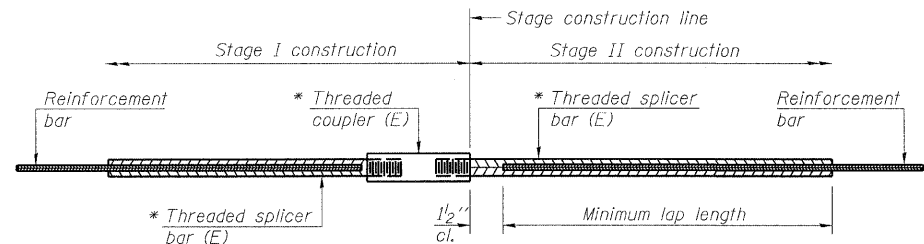


STATE OF ILLINOIS
DEPARTMENT OF TRANSPORTATION

ROUTE NO.	SECTION	COUNTY	TOTAL SHEETS	SHEET NO.	SHEET NO. 5 6 SHEETS
FAP 95	*	JASPER	546	272	
FED. ROAD DIST. NO.	ILLINOIS	FED. AID PROJECT			

*(5,6)Y, RS-2, 6BR-7
Contract #94437



STANDARD BAR SPLICER ASSEMBLY

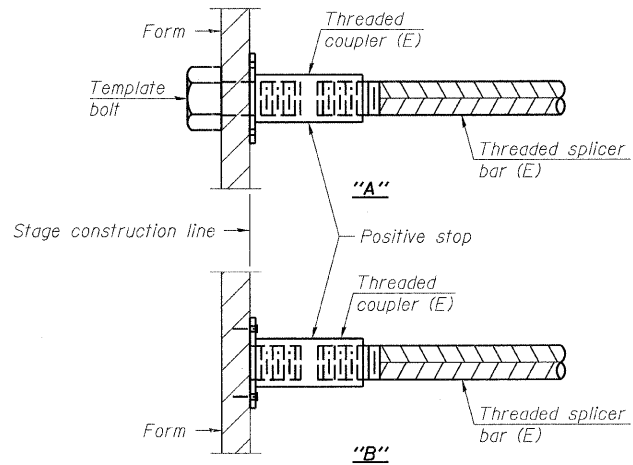
Bar size to be spliced	Minimum Lap Lengths			
	Table 1	Table 2	Table 3	Table 4
3, 4	1'-5"	1'-11"	2'-1"	2'-4"
5	1'-9"	2'-5"	2'-7"	2'-11"
6	2'-1"	2'-11"	3'-1"	3'-6"
7	2'-9"	3'-10"	4'-2"	4'-8"
8	3'-8"	5'-1"	5'-5"	6'-2"
9	4'-7"	6'-5"	6'-10"	7'-9"

Table 1: Black bar, 0.8 Class C
Table 2: Black bar, Top bar lap, 0.8 Class C
Table 3: Epoxy bar, 0.8 Class C
Table 4: Epoxy bar, Top bar lap, 0.8 Class C

Threaded splicer bar length = min. lap length + 1/2" + thread length

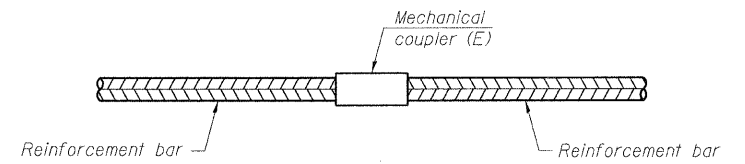
* Epoxy not required on Bar Splicer Assembly components used in conjunction with black bars.

Location	Bar size	No. assemblies required	Table for minimum lap length
Top Slab	#4	11	2
Walls	#5	8	1
Bottom Slab	#5	18	1
Top Slab	#6	11	1



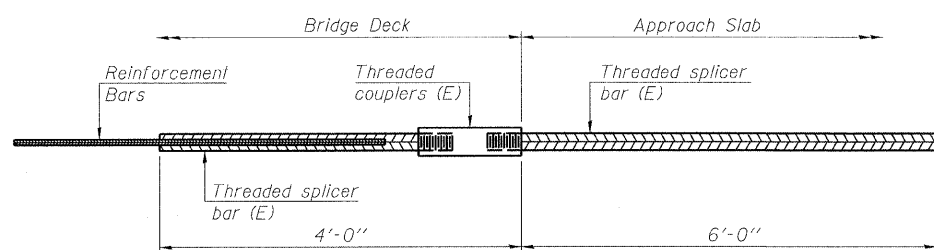
INSTALLATION AND SETTING METHODS

"A": Set bar splicer assembly by means of a template bolt.
"B": Set bar splicer assembly by nailing to wood forms or cementing to steel forms.
(E) : Indicates epoxy coating.



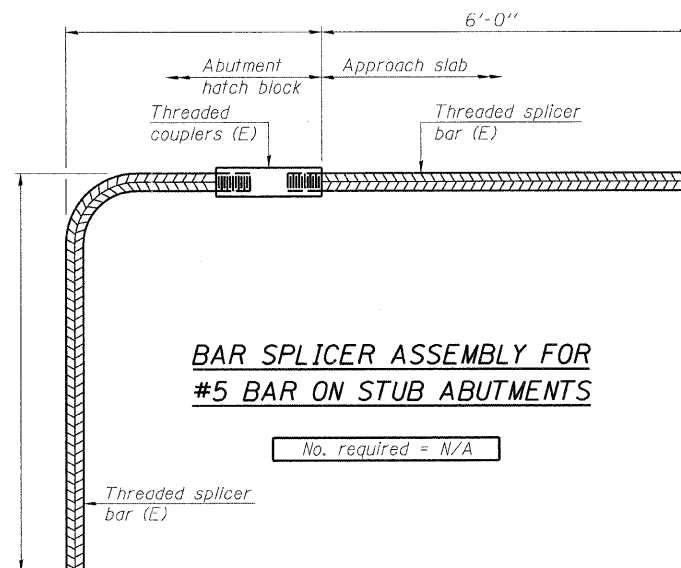
STANDARD MECHANICAL SPLICER

Location	Bar size	No. assemblies required



BAR SPLICER ASSEMBLY FOR #5 BAR ON INTEGRAL OR SEMI-INTEGRAL ABUTMENTS

No. required = N/A



BAR SPLICER ASSEMBLY FOR #5 BAR ON STUB ABUTMENTS

No. required = N/A

NOTES

Splicer bars shall be deformed with threaded ends and have a minimum 60 ksi yield strength.
All reinforcement shall be lapped and tied to the splicer bars.
Bar splicer assemblies shall be epoxy coated according to the requirements for reinforcement bars. See Section 508 of the Standard Specifications.
See special provision for Mechanical Splicers.
See approved list of bar splicer assemblies and mechanical splicers for alternatives.

REVISIONS	
NAME	DATE

ILLINOIS DEPARTMENT OF TRANSPORTATION
BAR SPLICER ASSEMBLY DETAILS

F.A.P. 95 (IL RTE. 33) OVER DRAINAGE DITCH
SECTION (5,6)Y, RS-2, 6BR-7
STA. 1178+20.00
JASPER COUNTY
S.N. 040-2011

SCALE: VERT. _____
HORIZ. _____
DATE: 11/22/04

DRAWN BY: LANDREY
DESIGNED BY: SANFORD
CHECKED BY: TRELLO

COMPUTER FILE NO. 01256BSD
PROJECT 01256
3/11/10-MDS

GREENE & BRADFORD, INC.
OF SPRINGFIELD
REGISTERED PROFESSIONAL ENGINEERS
PROFESSIONAL ENGINEERING CORPORATION
1000 N. 11TH ST., SUITE 200, SPRINGFIELD, ILL. 62761
TEL: 217-223-1111 FAX: 217-223-1112

FILE NAME = I:\OPERES\DRAWINGS\SN040-2011\01256BSD.dgn
PLOT SCALE = 1:0000.00
PLOT DATE = 3/11/2010
PLOT TIME = 5:23:31 PM
OPERATOR = TFGNKV