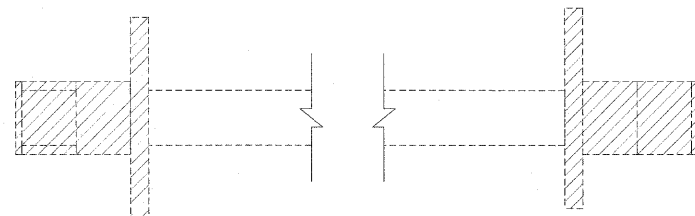


DESIGN		
INT.	DATE	REASON

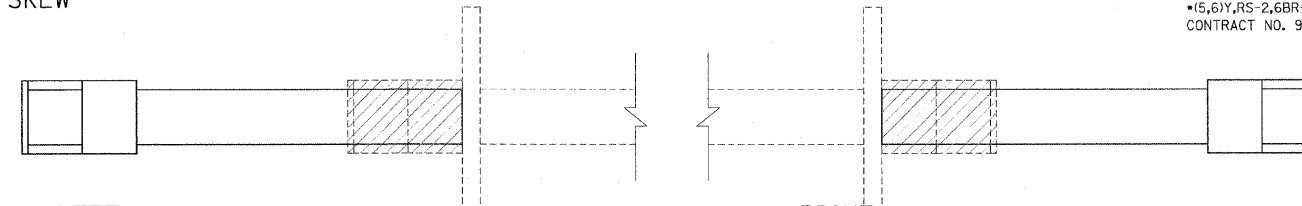
CULVERT NO. 6
STA. 767+38.46
EXISTING 3'X2' RCBC
17° SKEW



REMOVAL OF EXISTING STRUCTURES NO. 3 - 1 EACH
FILLING EXISTING CULVERTS - 1 EACH

F.A.P. RTE.	SECTION	COUNTY	TOTAL SHEETS	SHEET NO.
95	*	JASPER	546	279
STA.	TO STA.			
FED. ROAD DIST. NO.	ILLINOIS FED. AID PROJECT			
	*15,6Y,RS-2,6BR-7			
	CONTRACT NO. 94437			

CULVERT NO. 9
STA. 810+48.58
EXISTING 3' X 1.5' RCBC
0° SKEW



LEFT

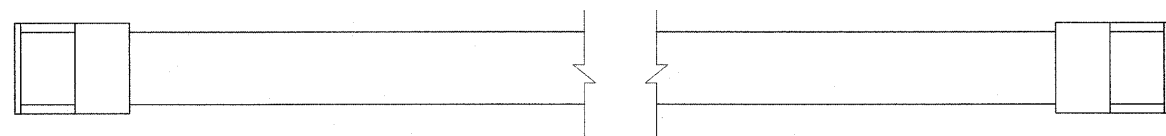
REMOVAL OF EXISTING STRUCTURES NO. 4 - 1/2 EACH
PRECAST CONCRETE BOX CULVERT 3' X 2' - 18 FOOT
BOX CULVERT END SECTION, CULVERT NO. 9 - 1 EACH
EXPANSION BOLTS - 3/4 INCH - 8 EACH
REINFORCEMENT BARS - 27 POUNDS
CONCRETE COLLAR - 0.33 CY
POROUS GRANULAR BEDDING - 3 CY
CUT - 17 CY
FILL - 7 CY
DESIGN FILL HEIGHT - < 2'

RIGHT

REMOVAL OF EXISTING STRUCTURES NO. 4 - 1/2 EACH
PRECAST CONCRETE BOX CULVERT 3' X 2' - 18 FOOT
BOX CULVERT END SECTION, CULVERT NO. 9 - 1 EACH
EXPANSION BOLTS - 3/4 INCH - 8 EACH
REINFORCEMENT BARS - 27 POUNDS
CONCRETE COLLAR - 0.33 CY
POROUS GRANULAR BEDDING - 3 CY
CUT - 15 CY
FILL - 12 CY
DESIGN FILL HEIGHT - < 2'

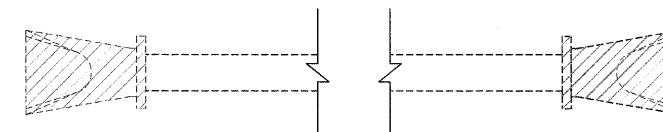
PLOTS & CHECKS		
INT.	DATE	REASON

CULVERT NO. 7
STA. 767+80.00
0° SKEW




PRECAST CONCRETE BOX CULVERT 3' X 2' - 52 FOOT
BOX CULVERT END SECTION NO. 7 - 2 EACH
POROUS GRANULAR BEDDING - 3 CY
PAVEMENT PATCHING, TYPE III 14 INCH - 2 @ 11.6 SY
CUT - 27 CY
FILL - 6 CY
DESIGN FILL HEIGHT - < 2'

CULVERT NO. 10
STA. 865+33.80
EXISTING 2' X 1.5' PRC
0° SKEW

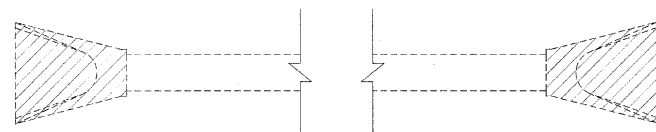


CONCRETE HEADWALL REMOVAL - 2 EACH
REMOVE EXISTING FLARED END SECTION - 2 EACH
FILLING EXISTING CULVERTS - 1 EACH
CUT - 2 CY
FILL - 2 CY

LEGEND

 - EXISTING ITEMS TO BE REMOVED

CULVERT NO. 8
STA. 781+23.55
EXISTING 2' X 2' RCBC WITH 30" FLARED END SECTION
0° SKEW



REMOVE EXISTING FLARED END SECTION - 2 EACH
FILLING EXISTING CULVERTS - 1 EACH
CUT - 2 CY

REVISIONS	
NAME	DATE

ILLINOIS DEPARTMENT OF TRANSPORTATION
CULVERT DETAILS
FAP ROUTE 95 (IL RTE. 33)
SECTION (5,6)Y,RS-2,6BR-7
JASPER COUNTY

SCALE: VERT.
HORIZ.
DATE: 09/16/02
DRAWN BY: BISHOP
DESIGNED BY: COLBROOK
CHECKED BY: COLBROOK
COMPUTER FILE NO.
CULV_DET.DGN-2
PROJECT 01256
2/26/10-FAV

