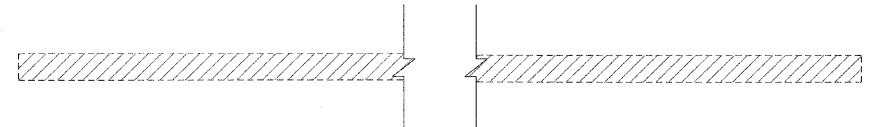


DESTIN		
INT.	DATE	REASON

CULVERT NO. 21
STA. 89+50, LT. (CIPS ROAD/500E)
EXISTING 18" CMP



- PIPE CULVERT REMOVAL - 59 FOOT
- CUT - 5 CY
- FILL - 25 CY

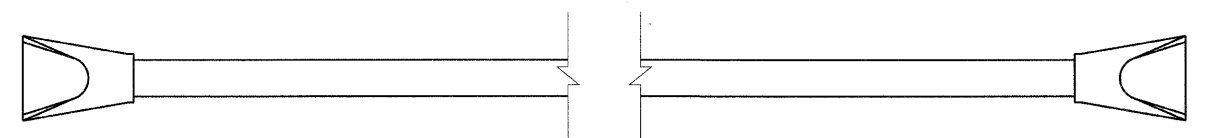
C.I.P.S. ROAD/500E

CULVERT NO. 24
DELETED

F.A.P. RTE.	SECTION	COUNTY	TOTAL SHEETS	SHEET NO.
95	•	JASPER	546	282
STA.		TO STA.		
FED. ROAD DIST. NO.		ILLINOIS	FED. AID PROJECT	
*(5,6)Y,RS-2,6BR-7				
CONTRACT NO. 94437				

PLOTS & CHECKS		
INT.	DATE	REASON

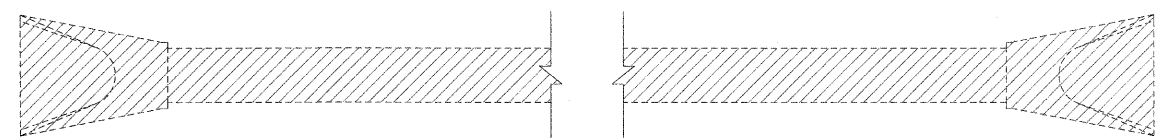
CULVERT NO. 22
STA. 946+13.00, 53' LT.
15° SKEW



- PIPE CULVERTS, CLASS A, TYPE 1 24" - 60 FOOT
- PRC FLARED END SECTIONS 24" - 2 EACH
- TRENCH BACKFILL - 12 CY
- POROUS GRANULAR BEDDING - 4 CY
- CUT - 50 CY
- FILL - 10 CY

C.I.P.S. ROAD/500E

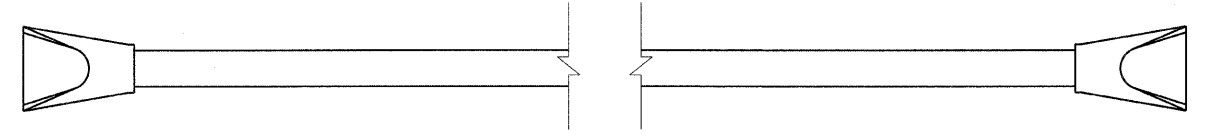
CULVERT NO. 25
STA. 979+53
EXISTING 36" RCP
53° SKEW



- PIPE CULVERT REMOVAL - 52 FOOT
- CUT - 5 CY

1200E (TR 173C)

CULVERT NO. 23
STA. 946+31, 38.5' RT.
5° SKEW



- PIPE CULVERTS, CLASS A, TYPE 1 24" - 168 FOOT
- PRC FLARED END SECTIONS 24" - 2 EACH
- TRENCH BACKFILL - 45 CY
- POROUS GRANULAR BEDDING - 12 CY
- CUT - 163 CY
- FILL - 65 CY

C.I.P.S. ROAD/500E

LEGEND
[Hatched Box] - EXISTING ITEMS TO BE REMOVED

CHECKS		
INT.	DATE	REASON

REVISIONS	
NAME	DATE

ILLINOIS DEPARTMENT OF TRANSPORTATION

CULVERT DETAILS

FAP ROUTE 95 (IL RTE. 33)
SECTION (5,6)Y,RS-2,6BR-7
JASPER COUNTY

SCALE: VERT. _____
HORIZ. _____
DATE: 09/16/02

DRAWN BY: BISHOP
DESIGNED BY: COLBROOK
CHECKED BY: COLBROOK

GREENE & BRADFORD, INC.
CONSULTING ENGINEERS
JASPER COUNTY, ILLINOIS
PROFESSIONAL ENGINEERS STATE NO. 007818
REGISTERED PROFESSIONAL ENGINEERS
OFFICE: 710 N. MAIN ST., JASPER, IL 61753
TEL: 715-8844, FAX: 715-8227

COMPUTER FILE NO.
CULV_DET.DGN-5
PROJECT 01256
2/26/10-FAV