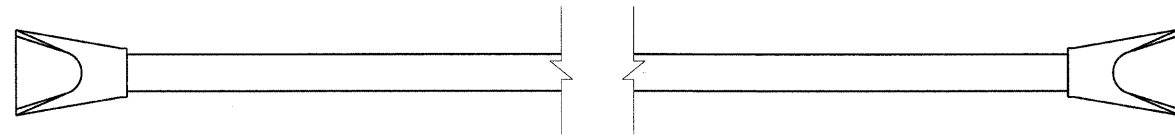


DESIGN		
INT.	DATE	REASON

CULVERT NO. 41  
STA. 1057+48, 35' RT.  
33° SKEW

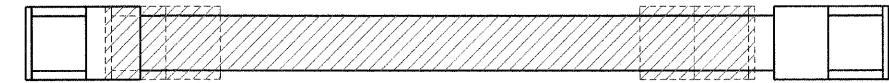


PIPE CULVERTS, CLASS A, TYPE 1 24" - 78 FOOT  
 PRC FLARED END SECTIONS 24" - 2 EACH  
 TRENCH BACKFILL - 9 CY  
 POROUS GRANULAR BEDDING - 4 CY  
 CUT - 34 CY  
 FILL - 14 CY

700E (T.R. 92)

F.A.P. RTE.	SECTION	COUNTY	TOTAL SHEETS	SHEET NO.
95	•	JASPER	546	286
STA.		TO STA.		
FED. ROAD DIST. NO.		ILLINOIS	FED. AID PROJECT	
*15,61Y,RS-2,6BR-7				
CONTRACT NO. 94437				

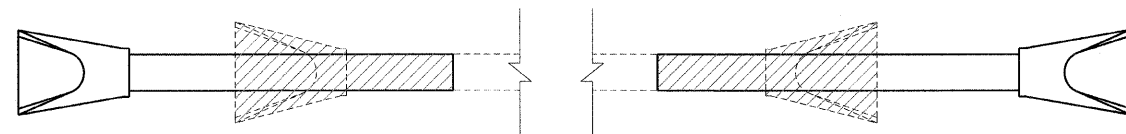
CULVERT NO. 44  
STA. 903+14, RT.  
EXISTING 4' X 2' RCBC



PRECAST CONCRETE BOX CULVERT 4' X 2' - 48 FOOT  
 BOX CULVERT END SECTION, CULVERT NO. 44 - 2 EACH  
 REMOVAL OF EXISTING STRUCTURES NO. 8 - 1 EACH  
 CUT - 13 CY  
 FILL - 7 CY  
 DESIGN FILL HEIGHT - < 2'

PLOTS & CHECKS		
INT.	DATE	REASON

CULVERT NO. 42  
STA. 1082+76  
EXISTING 24" RCCP  
0° SKEW



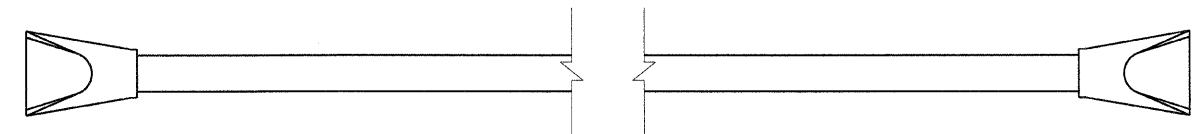
LEFT

PIPE CULVERTS, CLASS A, TYPE 1 24" - 12 FOOT  
 PRC FLARED END SECTIONS 24" - 1 EACH  
 CONCRETE COLLAR - 0.35 CY  
 TRENCH BACKFILL - 2 CY  
 POROUS GRANULAR BEDDING - 1 CY  
 CUT - 9 CY  
 FILL - 4 CY  
 DESIGN FILL HEIGHT - < 2'  
 PIPE CULVERT REMOVAL - 7 FOOT

RIGHT

PIPE CULVERTS, CLASS A, TYPE 1 24" - 14 FOOT  
 PRC FLARED END SECTIONS 24" - 1 EACH  
 CONCRETE COLLAR - 0.35 CY  
 TRENCH BACKFILL - 2 CY  
 POROUS GRANULAR BEDDING - 1 CY  
 CUT - 9 CY  
 FILL - 5 CY  
 DESIGN FILL HEIGHT - < 2'  
 PIPE CULVERT REMOVAL - 7 FOOT

CULVERT NO. 45  
STA. 1104+66, 38' LT  
34° SKEW



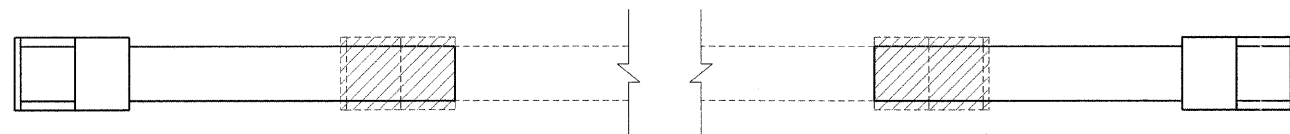
PIPE CULVERTS, CLASS A, TYPE 1 24" - 72 FOOT  
 PRC FLARED END SECTIONS 24" - 2 EACH  
 TRENCH BACKFILL - 12 CY  
 POROUS GRANULAR BEDDING - 4 CY  
 CUT - 42 CY  
 FILL - 21 CY

775E (T.R. 102)

**LEGEND**

- EXISTING ITEMS TO BE REMOVED

CULVERT NO. 43  
STA. 1083+12  
EXISTING 3' X 1.5' RCBC  
0° SKEW



LEFT

PRECAST CONCRETE BOX CULVERT 3' X 2' - 18 FOOT  
 BOX CULVERT END SECTION, CULVERT NO. 43 - 1 EACH  
 REMOVAL OF EXISTING STRUCTURES NO. 11 - 1/2 EACH  
 REINFORCEMENT BARS - 60 POUNDS  
 CONCRETE COLLAR - 0.83 CY  
 POROUS GRANULAR BEDDING - 3 CY  
 CUT - 13 CY  
 FILL - 7 CY  
 DESIGN FILL HEIGHT - < 2'

RIGHT

PRECAST CONCRETE BOX CULVERT 3' X 2' - 17 FOOT  
 BOX CULVERT END SECTION, CULVERT NO. 43 - 1 EACH  
 REMOVAL OF EXISTING STRUCTURES NO. 11 - 1/2 EACH  
 REINFORCEMENT BARS - 60 POUNDS  
 CONCRETE COLLAR - 0.83 CY  
 POROUS GRANULAR BEDDING - 3 CY  
 CUT - 19 CY  
 FILL - 7 CY  
 DESIGN FILL HEIGHT - < 2'

CHECKS		
INT.	DATE	REASON

REVISIONS	
NAME	DATE

ILLINOIS DEPARTMENT OF TRANSPORTATION

**CULVERT DETAILS**

FAP ROUTE 95 (IL RTE. 33)  
SECTION (5,6)Y,RS-2,6BR-7  
JASPER COUNTY

SCALE: VERT. \_\_\_\_\_  
HORIZ. \_\_\_\_\_  
DATE: 09/16/02

DRAWN BY: BISHOP  
DESIGNED BY: COLBROOK  
CHECKED BY: COLBROOK

**COMPUTER FILE NO.**  
CULV-DET.DGN-9

**PROJECT** 01256  
2/26/10-FAV

**GREENE & BRADFORD, INC.**  
OF SPRINGFIELD  
CONSULTING ENGINEERS  
PROFESSIONAL ENGINEERS  
1501 N. GARDNER  
SPRINGFIELD, ILLINOIS 62702  
TEL: 217-223-8800 FAX: 217-223-8801