

DESIGN		
INT.	DATE	REASON

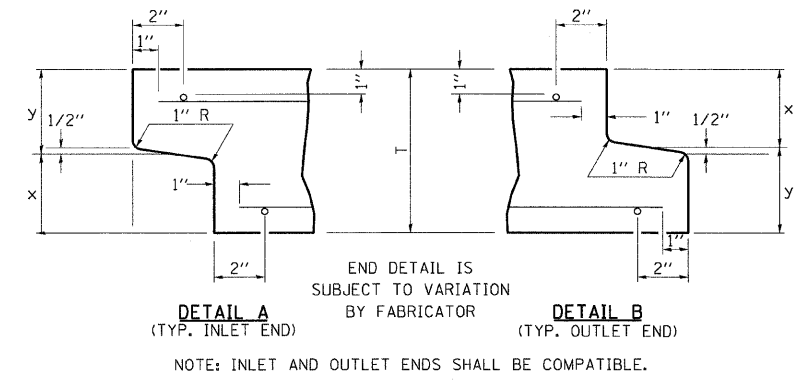
PLOTS & CHECKS			
INT.	DATE	NO.	REASON

CHECKS		
INT.	DATE	REASON

DETAIL OF PRECAST CONCRETE BOX CULVERT M259

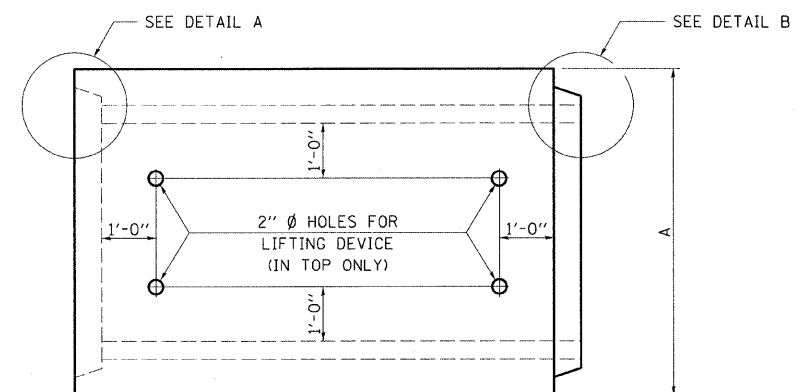
F.A.P. RTE.	SECTION	COUNTY	TOTAL SHEETS	SHEET NO.
95		JASPER	546	300

STA. TO STA.
FED. ROAD DIST. NO. ILLINOIS FED. AID PROJECT
*15.61Y,RS-2,6BR-7
CONTRACT NO. 94437

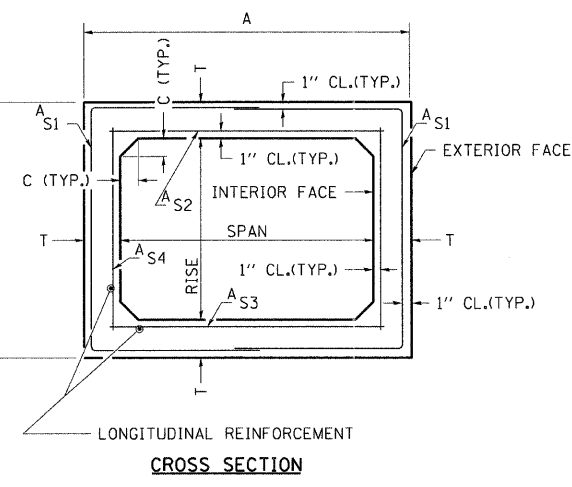
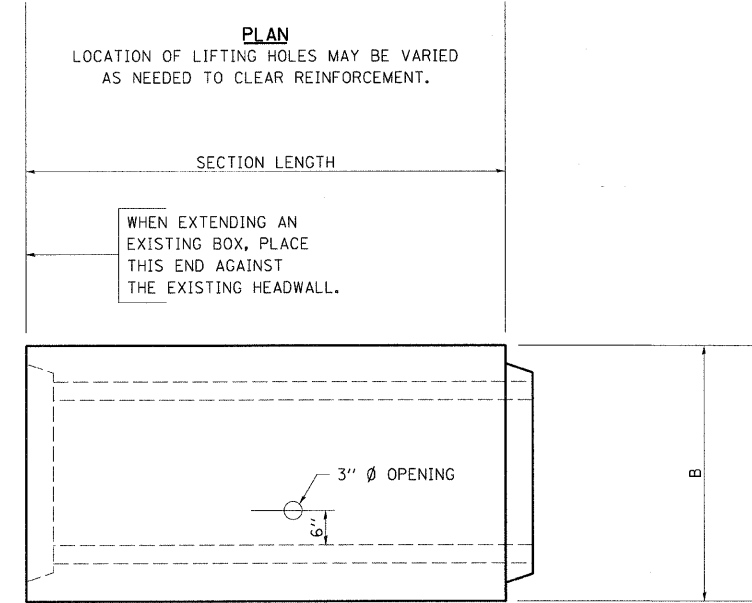
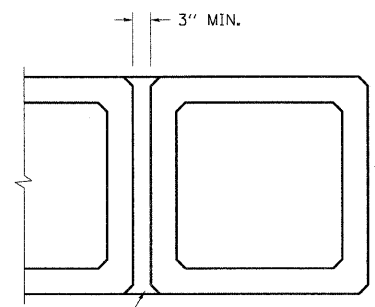


AASHTO DESIGNATION M259 (WITH 2' OR MORE COVER)

DESIGN LOADING:
TABLE 1 = HS20
TABLE 2 = INTERSTATE LOADING



PLAN
LOCATION OF LIFTING HOLES MAY BE VARIED AS NEEDED TO CLEAR REINFORCEMENT.



GENERAL NOTES

SHOP PLANS FOR THE REINFORCEMENT SHALL BE SUBMITTED IN ACCORDANCE WITH THE REQUIREMENTS OF ARTICLE 540.06 OF THE STANDARD SPECIFICATIONS.

MINIMUM CONCRETE STRENGTH SHALL BE 5000 PSI AFTER 28 DAYS.

THE JOINTS OF THE PRECAST BOX SECTIONS SHALL BE SEALED IN ACCORDANCE WITH ARTICLE 540.06 OF THE STANDARD SPECIFICATIONS FOR ROAD AND BRIDGE CONSTRUCTION.

THE TERMS A_{s1} , A_{s2} , A_{s3} , AND A_{s4} DENOTE THE REQUIRED STEEL AREAS FOR REINFORCEMENT AS SPECIFIED IN AASHTO M259. REINFORCEMENT SHALL BE WELDED WIRE FABRIC CONFORMING TO AASHTO SPECIFICATIONS M55 OR M221.

LIFTING HOLES SHALL BE FILLED IN ACCORDANCE WITH 540.06 OR PROJECT SPECIAL PROVISIONS.

DRAINAGE OPENINGS SHALL BE PROVIDED IN ACCORDANCE WITH ARTICLE 503.11 OF THE STANDARD SPECIFICATIONS. LOCATION AND SPACING OF THE OPENINGS SHALL BE SHOWN ON THE SHOP DRAWINGS.

DESIGN FILL HEIGHT (F):

MAXIMUM FILL HEIGHT (f_{max}) AND MINIMUM FILL HEIGHT (f_{min}) ARE MEASURED BETWEEN THE EXTREME EDGES OF SHOULDER.

f_{max}/f_{min} (FT)	F (FT)	AASHTO
$f_{min} < 2'$	$< 2'$	M273
$2' \leq f_{min} < 3'$	$2'$	M259
$3' \leq f_{min} < 4'$	$3'$	M259
$f_{min} \geq 4'$	f_{max}	M259

DESIGN FILL HEIGHTS APPLY TO ENTIRE CULVERT, INCLUDING EXTENSIONS AND END SECTIONS.

CULVERT SIZE	DIMENSIONS **		
	T (INCHES)	A (FT-IN)	B (FT-IN)
2x2	4	2-8	2-8
3x2	4	3-8	2-8
3x3	4	3-8	3-8
4x2	5	4-10	2-10
4x3	5	4-10	3-10
4x4	5	4-10	4-10
5x2	6	6-0	3-0
5x3	6	6-0	4-0
5x4	6	6-0	5-0
5x5	6	6-0	6-0
6x2	7	7-2	3-2
6x3	7	7-2	4-2
6x4	7	7-2	5-2
6x5	7	7-2	6-2
6x6	7	7-2	7-2
7x4	8	8-4	5-4
7x5	8	8-4	6-4
7x6	8	8-4	7-4
7x7	8	8-4	8-4
8x4	8	9-4	5-4
8x5	8	9-4	6-4
8x6	8	9-4	7-4
8x7	8	9-4	8-4
8x8	8	9-4	9-4
9x5	9	10-6	6-6
9x6	9	10-6	7-6
9x7	9	10-6	8-6
9x8	9	10-6	9-6
9x9	9	10-6	10-6
10x5	10	11-8	6-8
10x6	10	11-8	7-8
10x7	10	11-8	8-8
10x8	10	11-8	9-8
10x9	10	11-8	10-8
10x10	10	11-8	11-8
11x4	11	12-10	5-10
11x6	11	12-10	7-10
11x8	11	12-10	9-10
11x10	11	12-10	11-10
11x11	11	12-10	12-10
12x4	12	14-0	6-0
12x6	12	14-0	8-0
12x8	12	14-0	10-0
12x10	12	14-0	12-0
12x12	12	14-0	14-0

- * NON-STANDARD SIZES PER AASHTO.
- ** "T" MAY BE LARGER THAN SHOWN ON TABLE, PER AASHTO SPECIFICATIONS.

REVISIONS	
NAME	DATE

ILLINOIS DEPARTMENT OF TRANSPORTATION
DETAIL OF PRECAST CONCRETE BOX CULVERT SECTION
FAP ROUTE 95 (IL RTE. 33)
SECTION (5,6)Y,RS-2,6BR-7
JASPER COUNTY

SCALE: VERT. _____
HORIZ. _____
DATE: 09/18/02

DRAWN BY: BISHOP
DESIGNED BY: COLBROOK
CHECKED BY: COLBROOK

GREENE & BRADFORD, INC.
OF SPRINGFIELD

COMPUTER FILE NO.
PRECAST - 50
PROJECT 01256
2/26/10-FAV