

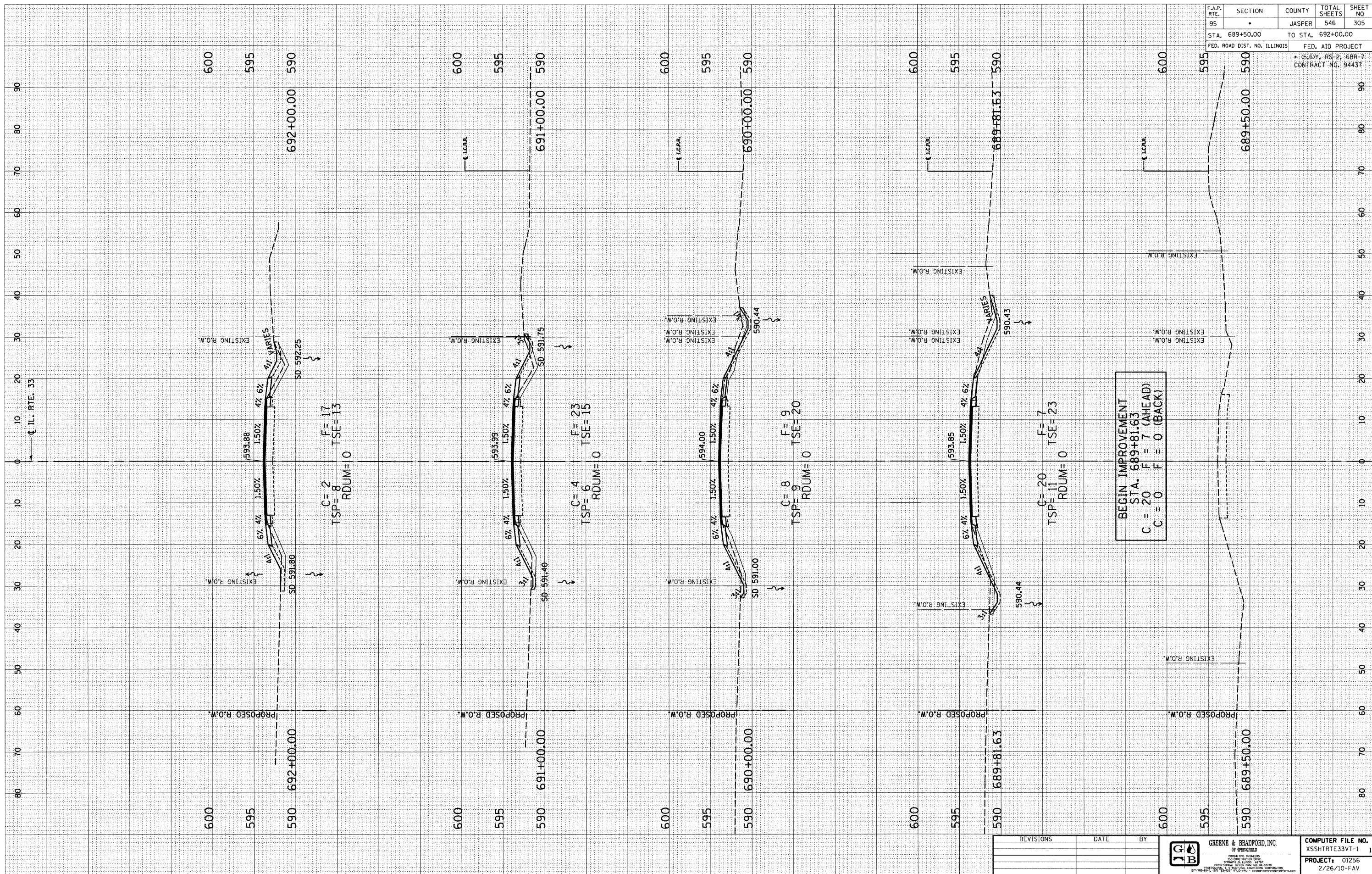
DESIGN		
INT.	DATE	REASON

FINAL SURVEY		BY		DATE	
SURVEYED	NO.				
PLOTTED					
TEMPLATE					
AREAS CHECKED					

PLOTS & CHECKS			
INT.	DATE	NO.	REASON

ORIGINAL SURVEY		BY		DATE	
SURVEYED	NO.				
PLOTTED					
TEMPLATE					
AREAS CHECKED					

CHECKS		
INT.	DATE	REASON



F.A.P. RTE.	SECTION	COUNTY	TOTAL SHEETS	SHEET NO.
95		JASPER	546	305

STA. 689+50.00		TO STA. 692+00.00	
FED. ROAD DIST. NO. ILLINOIS	FED. AID PROJECT		
		• (S, S)Y, RS-2, 6BR-7 CONTRACT NO. 94437	

E-XSEC 2:1 06/09/03

F.A.P. ROUTE 95 (IL RTE. 33) JASPER COUNTY

REVISIONS	DATE	BY

	GREENE & BRADFORD, INC. OF SPRINGFIELD ILLINOIS	REGISTERED PROFESSIONAL ENGINEERS STATE OF ILLINOIS
	REGISTERED PROFESSIONAL SURVEYORS STATE OF ILLINOIS	REGISTERED PROFESSIONAL GEODETIC ENGINEERS STATE OF ILLINOIS

COMPUTER FILE NO. XSSHTRTE33VT-1	PROJECT: 01256
2/26/10-FAV	