

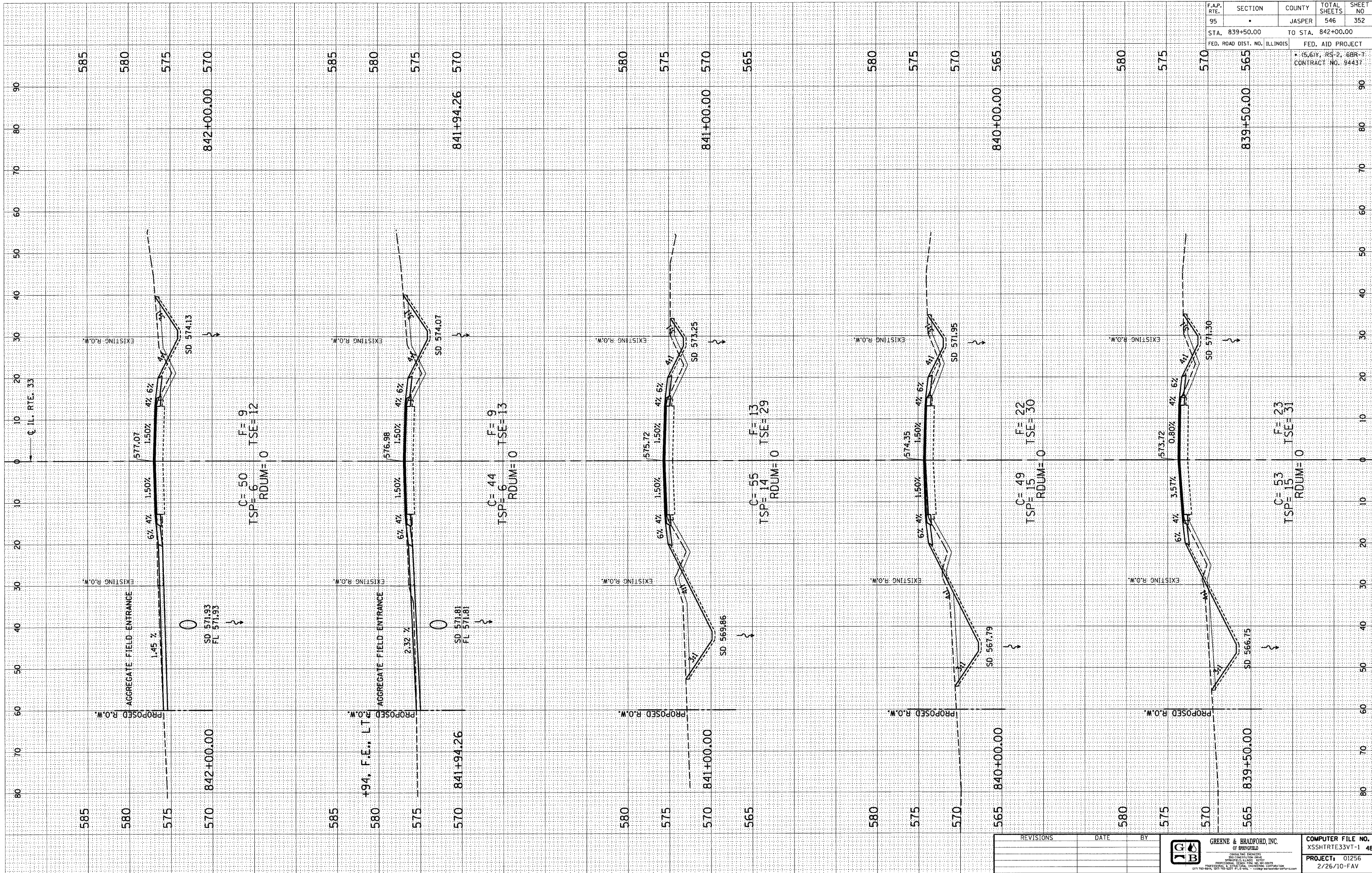
DESIGN		
INT.	DATE	REASON

BY		DATE

PLOTS & CHECKS		
INT.	DATE	REASON

BY		DATE

CHECKS		
INT.	DATE	REASON



F.A.P. RTE.	SECTION	COUNTY	TOTAL SHEETS	SHEET NO.
95	.	JASPER	546	352
STA. 839+50.00 TO STA. 842+00.00			FED. AID PROJECT	
			* (S, 6)Y, RS-2, 6BR-7, CONTRACT NO. 94437	

E-XSEC 2:1 06/09/03

F.A.P. ROUTE 95 (IL RTE. 33) JASPER COUNTY

REVISIONS	DATE	BY



**GREENE & BRADFORD, INC.**  
OF SPRINGFIELD  
REGISTERED PROFESSIONAL ENGINEERS  
PROFESSIONAL ENGINEERS  
NO. 112378-001, 112378-002, 112378-003, 112378-004, 112378-005, 112378-006, 112378-007, 112378-008, 112378-009, 112378-010, 112378-011, 112378-012, 112378-013, 112378-014, 112378-015, 112378-016, 112378-017, 112378-018, 112378-019, 112378-020, 112378-021, 112378-022, 112378-023, 112378-024, 112378-025, 112378-026, 112378-027, 112378-028, 112378-029, 112378-030, 112378-031, 112378-032, 112378-033, 112378-034, 112378-035, 112378-036, 112378-037, 112378-038, 112378-039, 112378-040, 112378-041, 112378-042, 112378-043, 112378-044, 112378-045, 112378-046, 112378-047, 112378-048, 112378-049, 112378-050, 112378-051, 112378-052, 112378-053, 112378-054, 112378-055, 112378-056, 112378-057, 112378-058, 112378-059, 112378-060, 112378-061, 112378-062, 112378-063, 112378-064, 112378-065, 112378-066, 112378-067, 112378-068, 112378-069, 112378-070, 112378-071, 112378-072, 112378-073, 112378-074, 112378-075, 112378-076, 112378-077, 112378-078, 112378-079, 112378-080, 112378-081, 112378-082, 112378-083, 112378-084, 112378-085, 112378-086, 112378-087, 112378-088, 112378-089, 112378-090, 112378-091, 112378-092, 112378-093, 112378-094, 112378-095, 112378-096, 112378-097, 112378-098, 112378-099, 112378-100

COMPUTER FILE NO.	XSSHRT33VT-1 48
PROJECT:	01256
	2/26/10-FAV