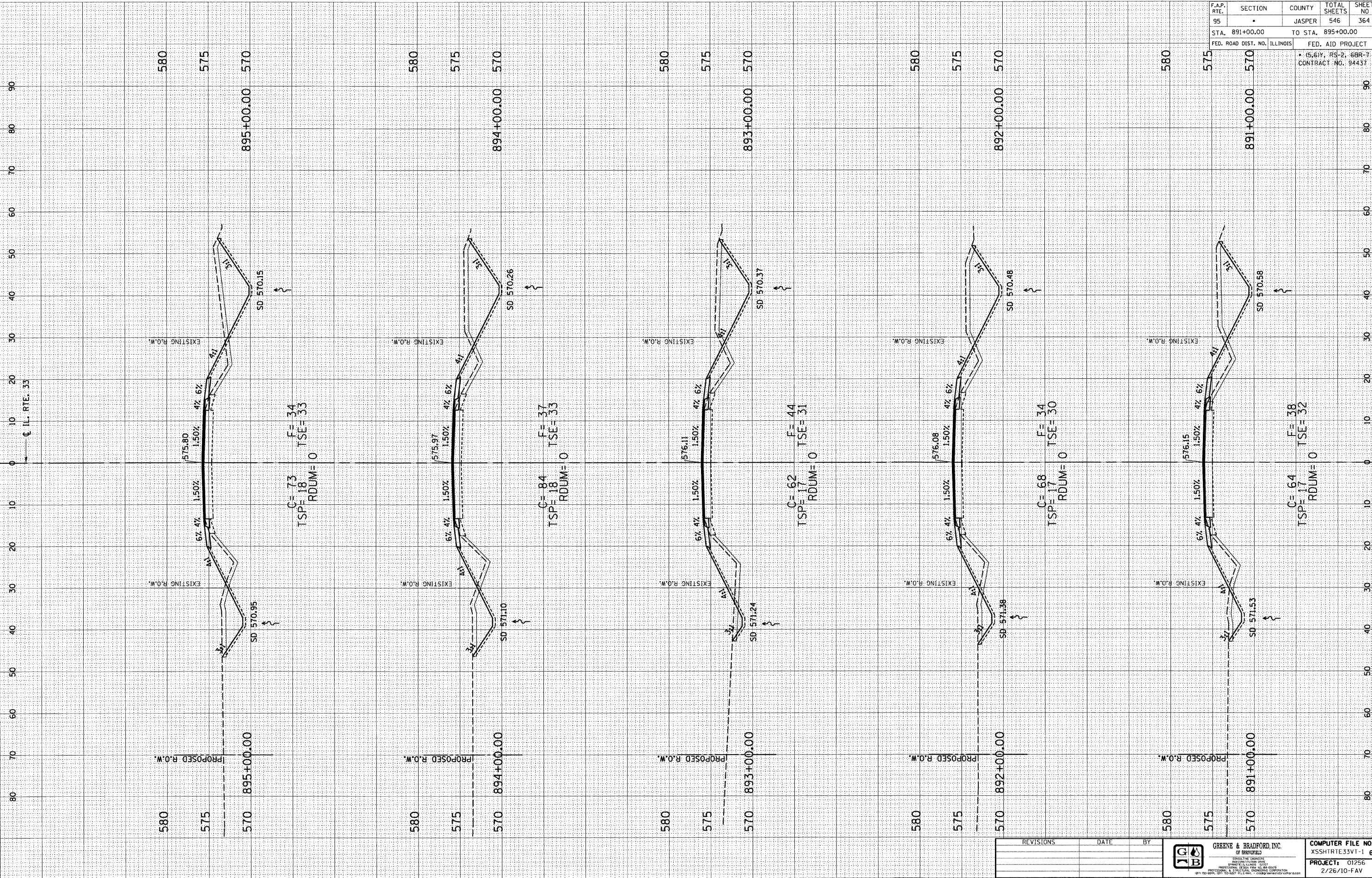


DESIGN		
INT.	DATE	REASON

PLOTS & CHECKS		BY		DATE	
INT.	DATE	NO.	REASON	NO.	REASON

ORIGINAL SURVEY		BY		DATE	
INT.	DATE	NO.	REASON	NO.	REASON

CHECKS		BY		DATE	
INT.	DATE	NO.	REASON	NO.	REASON



F.A.P. RTE.	SECTION	COUNTY	TOTAL SHEETS	SHEET NO.
95	•	JASPER	546	364
STA. 891+00.00		TO STA. 895+00.00		
FED. ROAD DIST. NO. ILLINOIS		FED. AID PROJECT		
• (S,6)Y, RS-2, 6BR-7 CONTRACT NO. 94437				

E-XSEC 2:1 06/09/03

REVISIONS	DATE	BY
GREENE & BRADFORD, INC. OF SPRINGFIELD, ILLINOIS CONSULTING ENGINEERS PROFESSIONAL ENGINEERING OFFICE <small>PROFESSIONAL ENGINEER LICENSE NO. 0009 LICENSE EXPIRES 12/31/10 411 1/2-10th St., Springfield, IL 62761-3901</small>		COMPUTER FILE NO. XSSHRT33VT-1 60 PROJECT: 01256 2/26/10-FAV

F.A.P. ROUTE 95 (IL RTE. 33) JASPER COUNTY