

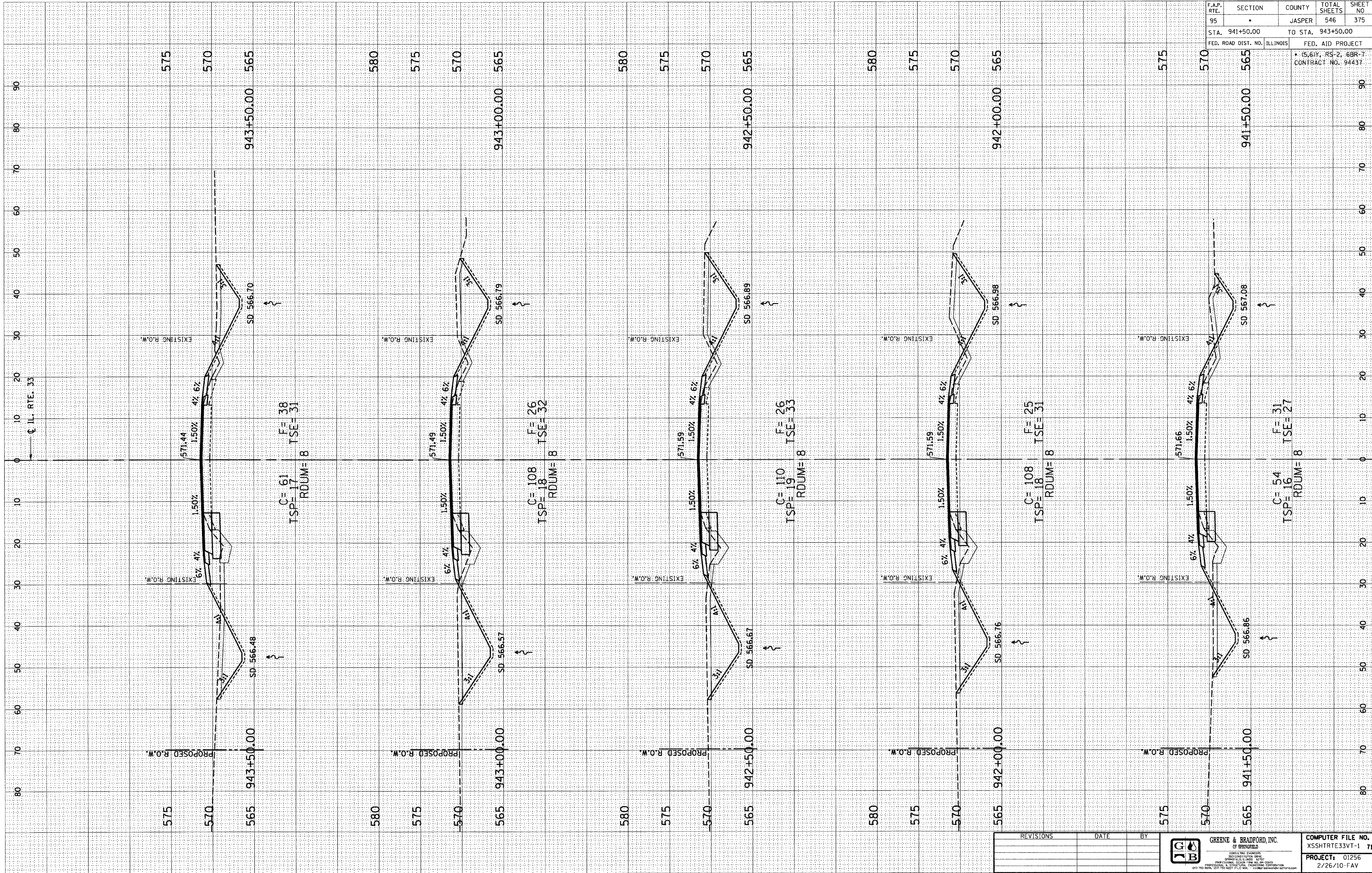
DESIGN		
INT. DATE	REASON	

CHECKS		
INT. DATE	REASON	

PLOTS & CHECKS		
INT. DATE	NO.	REASON

CHECKS		
INT. DATE	REASON	

CHECKS		
INT. DATE	REASON	



F.A.P. RTE.	SECTION	COUNTY	TOTAL SHEETS	SHEET NO.
95		JASPER	546	375
STA. 941+50.00		TO STA. 943+50.00		
FED. ROAD DIST. NO. ILLINOIS		FED. AID PROJECT		
• (S, 61Y, RS-2, 6BR-7 CONTRACT NO. 94437				

E-XSEC 2:1 06/09/03

REVISIONS	DATE	BY

**GREENE & BRADFORD, INC.**  
OF SPRINGFIELD

REGISTERED PROFESSIONAL ENGINEERS  
REGISTERED PROFESSIONAL SURVEYORS  
REGISTERED PROFESSIONAL LAND SURVEYORS  
REGISTERED PROFESSIONAL GEODETIC ENGINEERS

1000 W. 10th St., Springfield, IL 62761  
TEL: 217-223-1111 FAX: 217-223-1112

COMPUTER FILE NO.	XSSHTRTE33VT-1 71
PROJECT:	01256
	2/26/10-FAV

F.A.P. ROUTE 95 (IL RTE. 33) JASPER COUNTY