

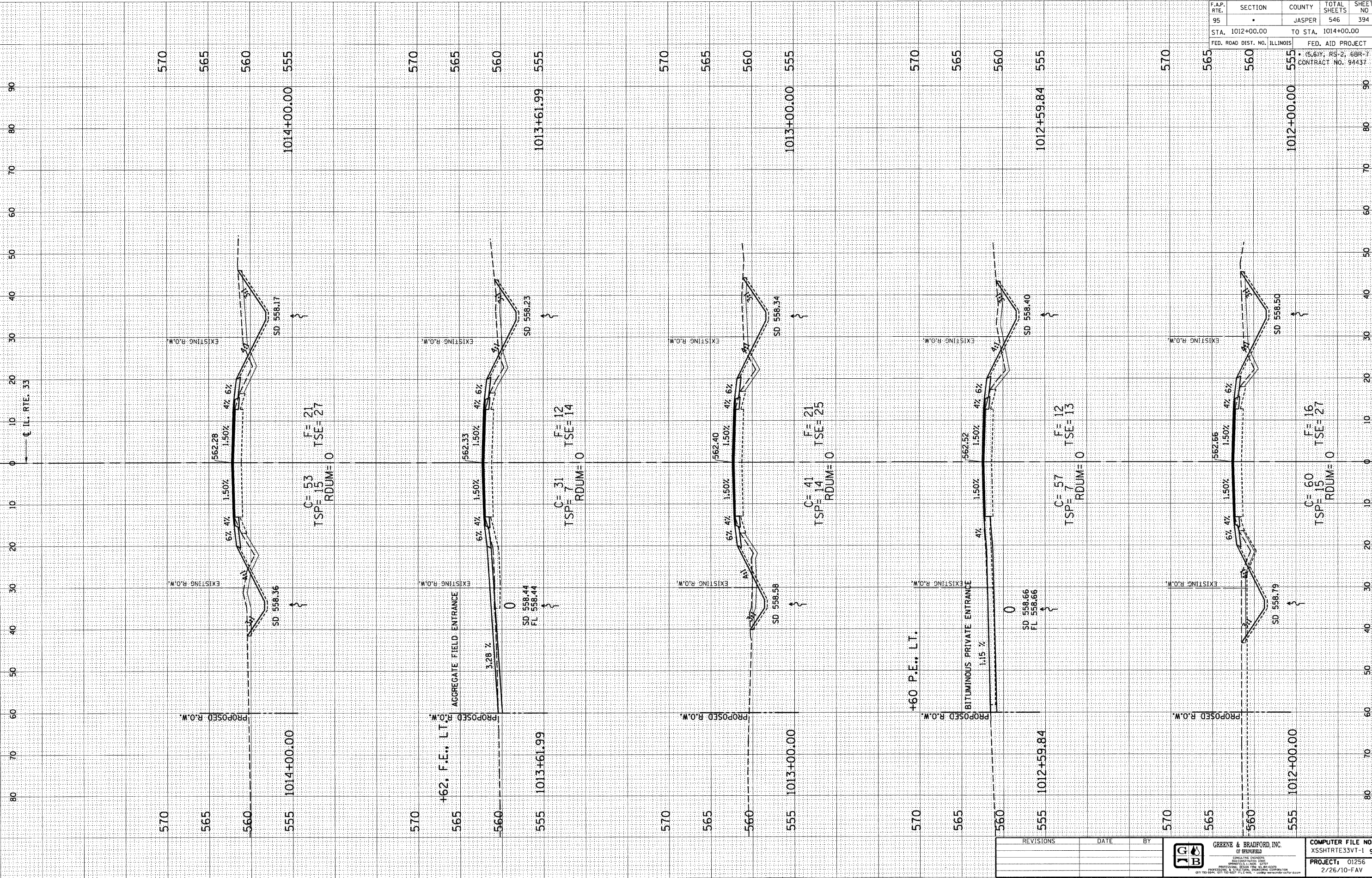
DESIGN		
INT. DATE	REASON	

PLOTS & CHECKS		
INT. DATE	NO.	REASON

CHECKS		
INT. DATE	REASON	

ORIGINAL SURVEY		
NO.	DATE	BY

SURVEYED		
NO.	DATE	BY



F.A.P. RTE.	SECTION	COUNTY	TOTAL SHEETS	SHEET NO
95	•	JASPER	546	394
STA. 1012+00.00 TO STA. 1014+00.00			FED. AID PROJECT	
FED. ROAD DIST. NO. ILLINOIS			CONTRACT NO. 94437	

F-XSEC 2:1 06/09/03

F.A.P. ROUTE 95 (IL RTE. 33) JASPER COUNTY

REVISIONS	DATE	BY

GREENE & BRADFORD, INC.
OF SPRINGFIELD
REGISTERED PROFESSIONAL ENGINEERS
REGISTERED PROFESSIONAL SURVEYORS
REGISTERED PROFESSIONAL LAND SURVEYORS
REGISTERED PROFESSIONAL CIVIL ENGINEERS
REGISTERED PROFESSIONAL ARCHITECTS
REGISTERED PROFESSIONAL INTERIOR DESIGNERS
REGISTERED PROFESSIONAL PLANNING CONSULTANTS
REGISTERED PROFESSIONAL ENVIRONMENTAL ENGINEERS
REGISTERED PROFESSIONAL ELECTRICAL ENGINEERS
REGISTERED PROFESSIONAL MECHANICAL ENGINEERS
REGISTERED PROFESSIONAL CHEMICAL ENGINEERS
REGISTERED PROFESSIONAL INDUSTRIAL ENGINEERS
REGISTERED PROFESSIONAL METALLURGICAL ENGINEERS
REGISTERED PROFESSIONAL AERONAUTICAL ENGINEERS
REGISTERED PROFESSIONAL AGRICULTURAL ENGINEERS
REGISTERED PROFESSIONAL BIOMEDICAL ENGINEERS
REGISTERED PROFESSIONAL ENVIRONMENTAL ENGINEERS
REGISTERED PROFESSIONAL FOOD ENGINEERS
REGISTERED PROFESSIONAL GEOTECHNICAL ENGINEERS
REGISTERED PROFESSIONAL MARINE ENGINEERS
REGISTERED PROFESSIONAL NUCLEAR ENGINEERS
REGISTERED PROFESSIONAL PETROLEUM ENGINEERS
REGISTERED PROFESSIONAL TRANSPORTATION ENGINEERS
REGISTERED PROFESSIONAL WATERSUPPLY ENGINEERS

COMPUTER FILE NO.
XSSHRTTE33VT-1 90
PROJECT: 01256
2/26/10-FAV