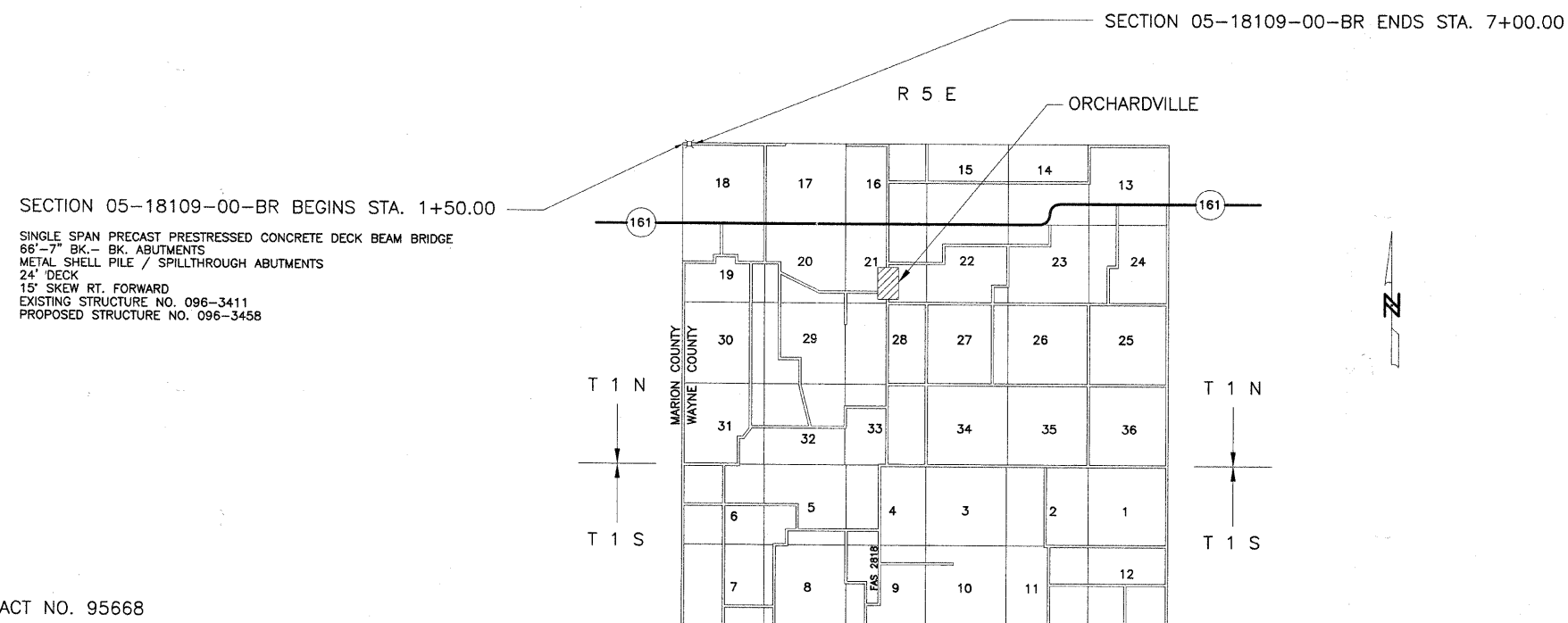
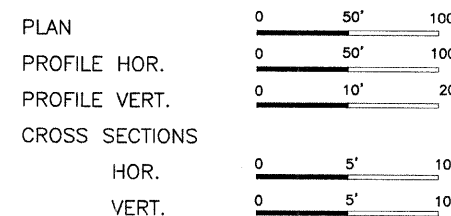


| ROUTE | SECTION | COUNTY | TOTAL SHEETS | SHEET NO. |
|--------------------|----------------|----------|--------------|-----------|
| T.R. 165 | 05-18109-00-BR | WAYNE | 14 | 1 |
| CONTRACT NO. 95668 | | ILLINOIS | | |

STATE OF ILLINOIS
DEPARTMENT OF TRANSPORTATION
DIVISION OF HIGHWAYS
PLANS FOR PROPOSED
HIGHWAY BRIDGE PROGRAM PROJECT
SECTION 05-18109-00-BR WAYNE COUNTY
ORCHARD ROAD DISTRICT
PROJECT BROS-0191(063)
JOB NO. C-97-027-12
T.R. 165

Joint Utility Locating Information for Excavators
JULIE 1-800-892-0123

| INDEX OF SHEETS | |
|-----------------|----------------------------|
| SHEET | ITEM |
| 1 | COVER SHEET |
| 2 | SUMMARY OF QUANTITIES |
| 3 | ROADWAY PLAN AND PROFILE |
| 4 | GENERAL PLAN AND ELEVATION |
| 5 | SUPERSTRUCTURE |
| 6 | SUPERSTRUCTURE DETAILS |
| 7 | STEEL RAILING, TYPE S-1 |
| 8 | WEST ABUTMENT DETAILS |
| 9 | EAST ABUTMENT DETAILS |
| 10 | PILE DETAILS |
| 11 | BORING LOGS |
| 12-14 | CROSS SECTIONS |
| | STANDARD 000001-06 |
| | STANDARD 280001-06 |
| | STANDARD 515001-03 |
| | STANDARD 701901-02 |
| | STANDARD BLR 21-9 |
| | STANDARD BLR 22-7 |



SINGLE SPAN PRECAST PRESTRESSED CONCRETE DECK BEAM BRIDGE
66'-7" BK.- BK. ABUTMENTS
METAL SHELL PILE / SPILLTHROUGH ABUTMENTS
24" DECK
15' SKEW RT. FORWARD
EXISTING STRUCTURE NO. 096-3411
PROPOSED STRUCTURE NO. 096-3458

CONTRACT NO. 95668

FUNCTIONAL CLASSIFICATION - RURAL LOCAL ROAD
ADT = 50
DESIGN SPEED = 30 MPH

NET LENGTH SECTION 05-18109-00-BR = 550.00 Ft. = 0.104 Mi.

Roger A. Charleston
Ill. Reg. Prof. Eng. # 29175
1/22/11
Lic Expires 1/30/11

CHARLESTON ENGINEERING, INC.
CONSULTING ENGINEERS
105 NORTH KITCHELL
P.O. BOX 397
OLNEY, ILLINOIS 62450
(618) 392-0736
ILLINOIS DEPARTMENT OF PROFESSIONAL REGULATION REGISTRATION #184.003513

APPROVED Nov. 22, 2011
Arthur J. Harbeck
COUNTY ENGINEER

STATE OF ILLINOIS
DEPARTMENT OF TRANSPORTATION

PASSED 1-11 2012
Maureen Koval
DISTRICT SEVEN ENGINEER OF
LOCAL ROADS AND STREETS

Releasing For
Bid Based on
Limited Review 1-11 2012
Roger A. Charleston
DEPUTY DIRECTOR OF HIGHWAYS
REGION FOUR ENGINEER