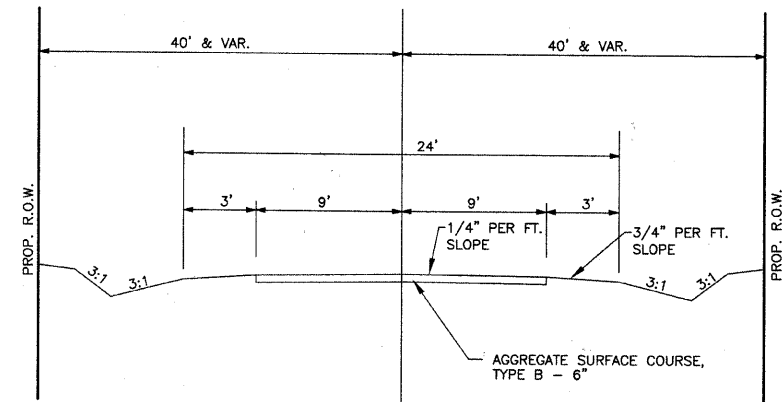
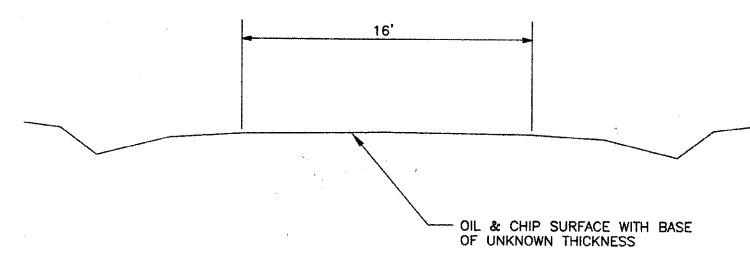


ROUTE	SECTION	COUNTY	TOTAL SHEETS	SHEET NO.
T.R. 165	05-18109-00-BR	WAYNE	14	2
CONTRACT NO. 95668		ILLINOIS		



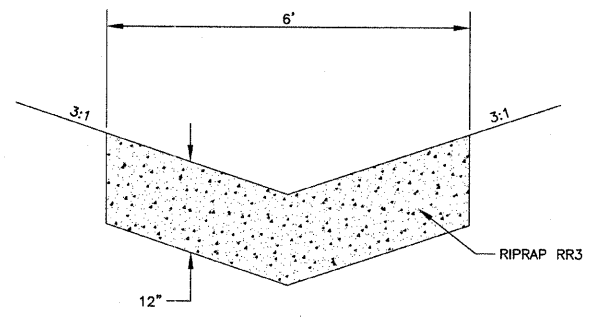
TYPICAL SECTION  
PROPOSED



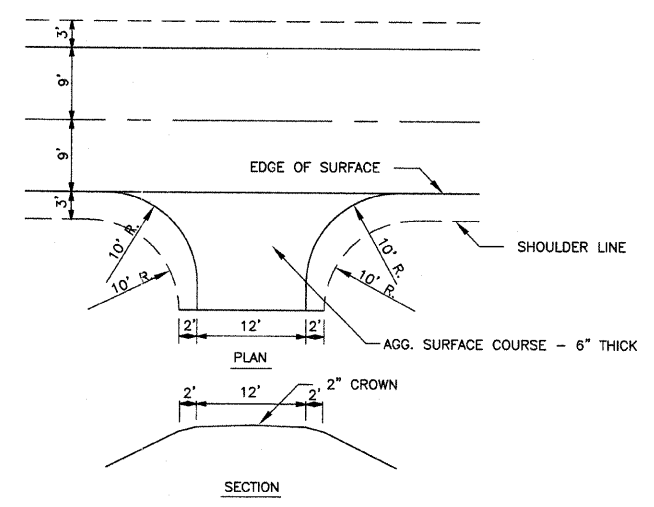
TYPICAL SECTION  
EXISTING

DESIGN DATA

LOCAL ROAD  
ADT = 50



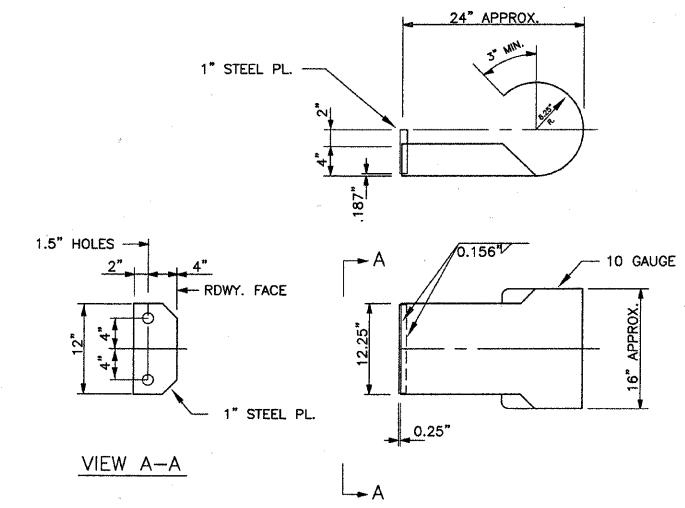
AGGREGATE DITCH (SPECIAL) DETAIL  
LT. STA. 3+40 TO 3+65



ENTRANCE DETAIL

SUMMARY OF QUANTITIES			
CODE NO.	ITEM	UNIT	QUANTITY
X2501000	SEEDING, CLASS 2 (SPECIAL)	ACRE	0.55
X2830495	AGGREGATE DITCH (SPECIAL)	TON	8
20100110	TREE REMOVAL (6 TO 15 UNITS DIAMETER)	UNIT	229
20100210	TREE REMOVAL (OVER 15 UNITS DIAMETER)	UNIT	18
20200100	EARTH EXCAVATION	CU YD	140
20300100	CHANNEL EXCAVATION	CU YD	275
20400800	FURNISHED EXCAVATION	CU YD	1215
28000305	TEMPORARY DITCH CHECKS	FOOT	30
28100807	STONE DUMPED RIPRAP, CLASS A4	TON	180
35101400	AGGREGATE BASE COURSE, TYPE B	TON	65
40200800	AGGREGATE SURFACE COURSE, TYPE B	TON	300
50100100	REMOVAL OF EXISTING STRUCTURES	EACH	1
50105220	PIPE CULVERT REMOVAL	FOOT	50
50300225	CONCRETE STRUCTURES	CU YD	24.6
50400505	PRECAST PRESTRESSED CONCRETE DECK BEAMS (27\"/>		

\* SPECIALTY ITEMS



CURLED END SECTION DETAILS

4 REQUIRED - COST INCLUDED IN  
"STEEL RAILING, TYPE S-1"