

**INDEX OF SHEETS**

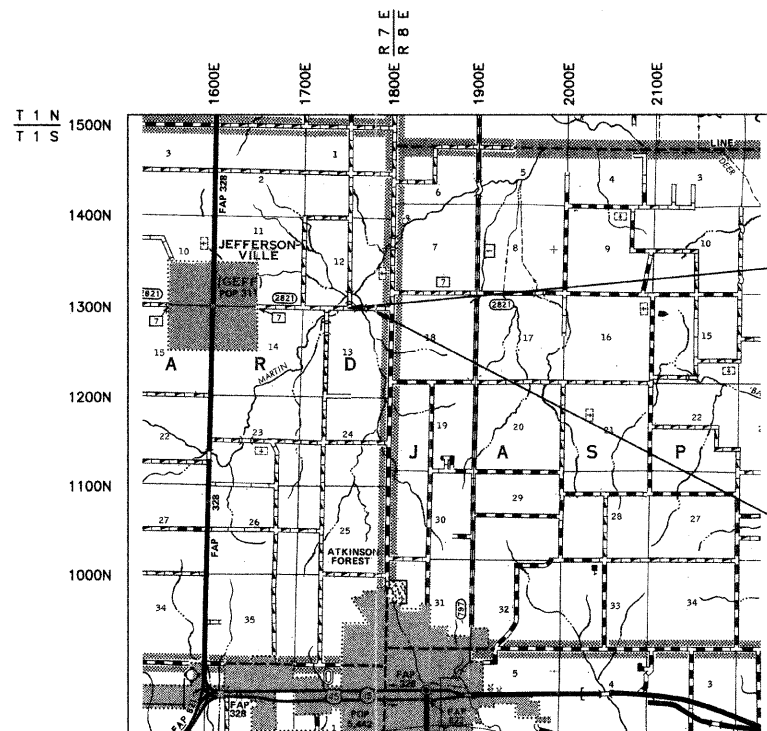
- 1 COVER SHEET
- 2 TYPICAL SECTIONS & SUMMARY OF QUANTITIES
- 3 PLAN & PROFILE
- 4-5 CROSS SECTIONS
- 6-11 BRIDGE PLANS

STANDARDS: 280001-06 EROSION CONTROL  
 515001-03 NAME PLATES  
 630301-05 SHLD. WIDENING TY 1 TERMINAL  
 635006-03 REFLECTOR & TERM. MKR. PLACEMENT  
 701901-02 TRAFFIC  
 BLR 21-9 TRAFFIC  
 BLR 22-7 TRAFFIC  
 BLR 27-1 TRAFFIC BARR. TERM. TSA

STATE OF ILLINOIS  
 DEPARTMENT OF TRANSPORTATION  
 DIVISION OF HIGHWAYS  
 PLANS FOR PROPOSED  
 FEDERAL-AID S.T.R. PROGRAM  
 COUNTY HIGHWAY 7  
 WAYNE COUNTY  
 SECTION 07-00117-00-BR  
 STRUCTURE NO. 096-3456  
 PROJECT NO. RS-2821(109)  
 JOB NO. C-97-035-12

SCALES

- PLAN 1 INCH = 50 FEET
- PROFILE HORZ. 1 INCH = 50 FEET
- PROFILE VERT. 1 INCH = 10 FEET
- CROSS SECTION 1 INCH = 5 FEET



SECTION 07-00117-00-BR  
 BEGINS STA. 9+00

STA. 6+44 - SPECIAL BRIDGE DESIGN  
 PROPOSED PRECAST PRESTRESSED CONCRETE  
 DECK BEAM BRIDGE WITH PILE BENT SPILL-THRU ABUTMENTS.  
 1 SPAN @ 68', 28' RDWY., SKEW = 0°

SECTION 07-00117-00-BR  
 ENDS STA. 22+10

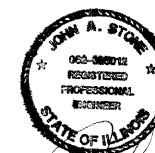
FUNCTIONAL CLASS: RURAL MAJOR COLLECTOR  
 ADT = 550  
 DESIGN SPEED = 50 MPH

LOCATION MAP

APPROXIMATE SCALE: 1 INCH = 1 MILE  
 NET LENGTH = 1310.00 L.F. = 0.248 MILES

TOLL FREE JOINT UTILITY LOCATING  
 INFORMATION FOR EXCAVATORS (J.U.L.I.E.)  
 TELEPHONE NO. 1-800-892-0123

PROFESSIONAL DESIGN FIRM #184-000832



*John A. Stone*  
 ILLINOIS REGISTERED PROFESSIONAL ENGINEER # 55012  
 LICENSE EXPIRES NOVEMBER 30, 2013

APPROVED DECEMBER 16, 2012

*Arthur J. Roedel*  
 LOCAL AGENCY REPRESENTATIVE

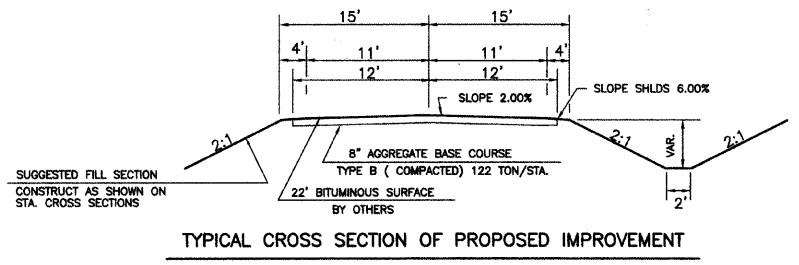
PASSED 1-11, 2012

*Margaret E. Todd*  
 DISTRICT SEVEN ENGINEER  
 OF LOCAL ROADS & STREETS

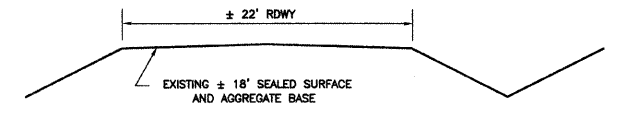
RELEASING FOR BID BASED ON LIMITED REVIEW

1-11, 2012

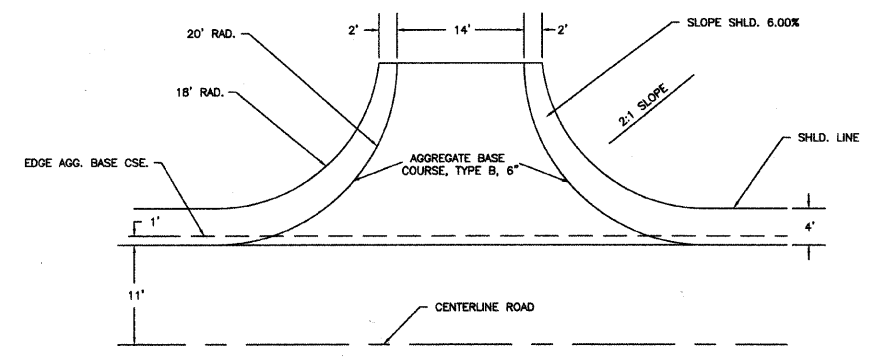
*Roger L. Dushell*  
 DEPUTY DIRECTOR OF HIGHWAYS  
 REGION FOUR ENGINEER  
 STATE OF ILLINOIS  
 DEPARTMENT OF TRANSPORTATION



TYPICAL CROSS SECTION OF PROPOSED IMPROVEMENT



TYPICAL CROSS SECTION OF EXISTING ROADWAY



DETAIL OF FIELD ENTRANCE

SUMMARY OF QUANTITIES

0.9	ACRE	SEEDING, CLASS 2 (SPECIAL)	X2501000
68	TON	AGGREGATE DITCH (SPECIAL)	X2830495
1	L SUM	TRAFFIC CONTROL AND PROTECTION, (SPECIAL)	X7010216
55	UNIT	TREE REMOVAL (6 TO 15 UNITS DIAMETER)	20100110
19	UNIT	TREE REMOVAL (OVER 15 UNITS DIAMETER)	20100210
924	CU YD	EARTH EXCAVATION	20200100
490	CU YD	CHANNEL EXCAVATION	20300100
4139	CU YD	FURNISHED EXCAVATION	20400800
100	TON	POROUS GRANULAR EMBANKMENT	20700110
85	FOOT	TEMPORARY DITCH CHECKS	28000305
60	FOOT	PERIMETER EROSION BARRIER	28000400
160	TON	STONE DUMPED RIPRAP, CLASS A4	28100807
1589	TON	AGGREGATE BASE COURSE, TYPE B	35101400
1	EACH	REMOVAL OF EXISTING STRUCTURES	50100100
25	CU YD	CONCRETE STRUCTURES	50300225
2.8	CU YD	CONCRETE ENCASEMENT	50300280
1909	SQ FT	PRECAST PRESTRESSED CONCRETE DECK BEAMS (33" DEPTH)	50400605
4100	POUND	REINFORCEMENT BARS	50800105
139	FOOT	STEEL RAILING, TYPE S1	50900205 *
369	FOOT	FURNISHING STEEL PILES HP12X53	51201600
369	FOOT	DRIVING PILES	51202305
1	EACH	TEST PILE STEEL HP12X53	51203600
8	EACH	PILE SHOES	51204650
1	EACH	NAME PLATES	51500100
172	FOOT	PIPE CULVERTS, CLASS D, TYPE 1 15"	54200220
2	EACH	TRAFFIC BARRIER TERMINAL, TYPE 5A	63100075 *
2	EACH	TRAFFIC BARRIER TERMINAL, TYPE 1 (SPECIAL) TANGENT	63100167 *
1	L SUM	MOBILIZATION	67100100
4	EACH	TERMINAL MARKER - DIRECT APPLIED	78201000 *

\*SPECIALTY ITEM

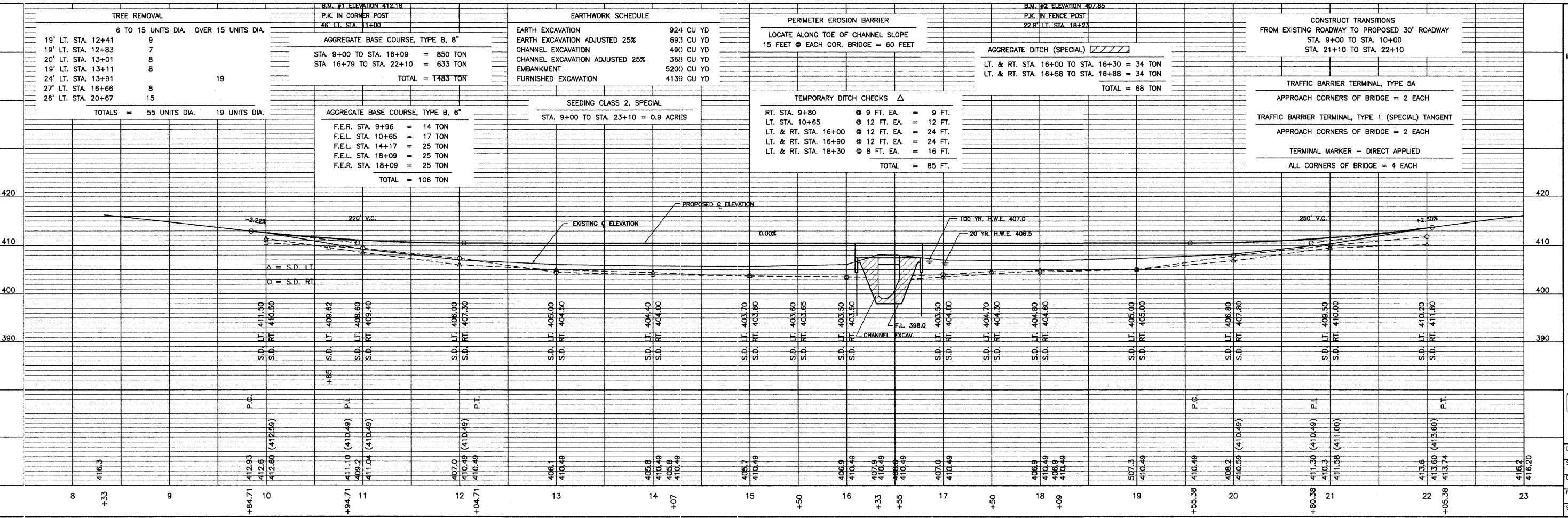
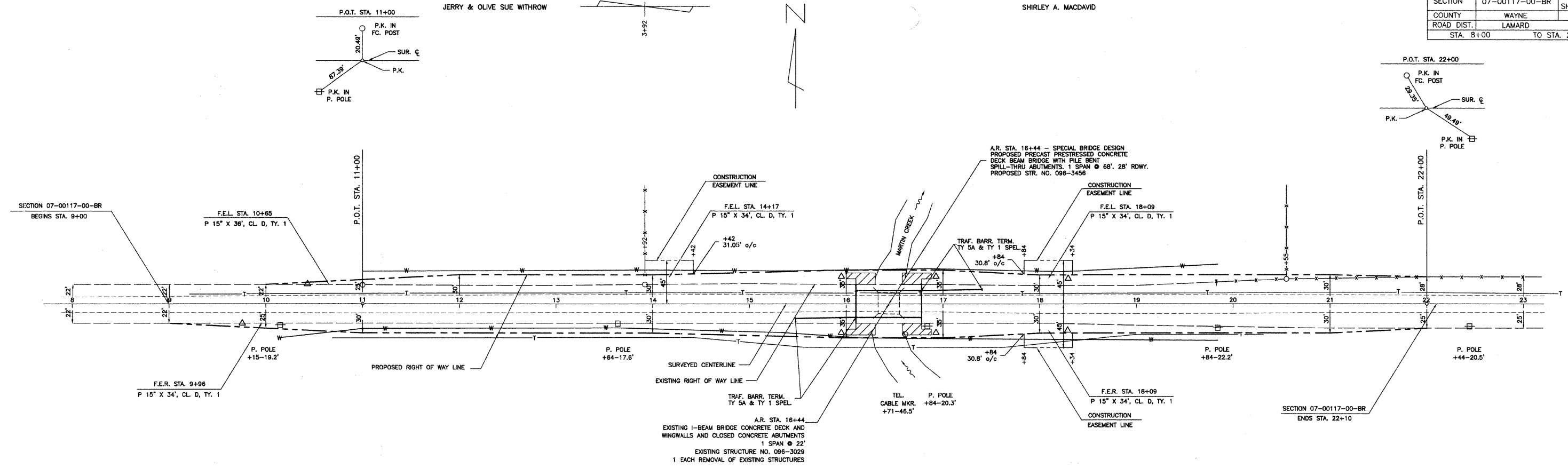
UTILITIES  
 TELEPHONE : WABASH TELEPHONE CO.  
 210 S. CHURCH STREET  
 P.O. BOX 229  
 LOUISVILLE, IL 62858  
 PH. 618-665-3311  
 ELECTRIC : WAYNE-WHITE ELECTRIC COOP.  
 RT. 45 WEST  
 FAIRFIELD, IL 62837  
 PH. 618-642-2196  
 WATER : BOYLESTON WATER CORP.  
 C/O BILL YOUNG  
 PH. 618-516-3322  
 WATER : JASPER WATER CORP.  
 C/O BILL YOUNG  
 PH. 618-516-3322

SECTION	07-00117-00-BR	TOTAL SHEETS	11	SHEET NO.	3
COUNTY	WAYNE				
ROAD DIST.	LAMARD				
STA. 8+00		TO STA. 22+00			

JERRY & OLIVE SUE WITHROW

SHIRLEY A. MACDAVID

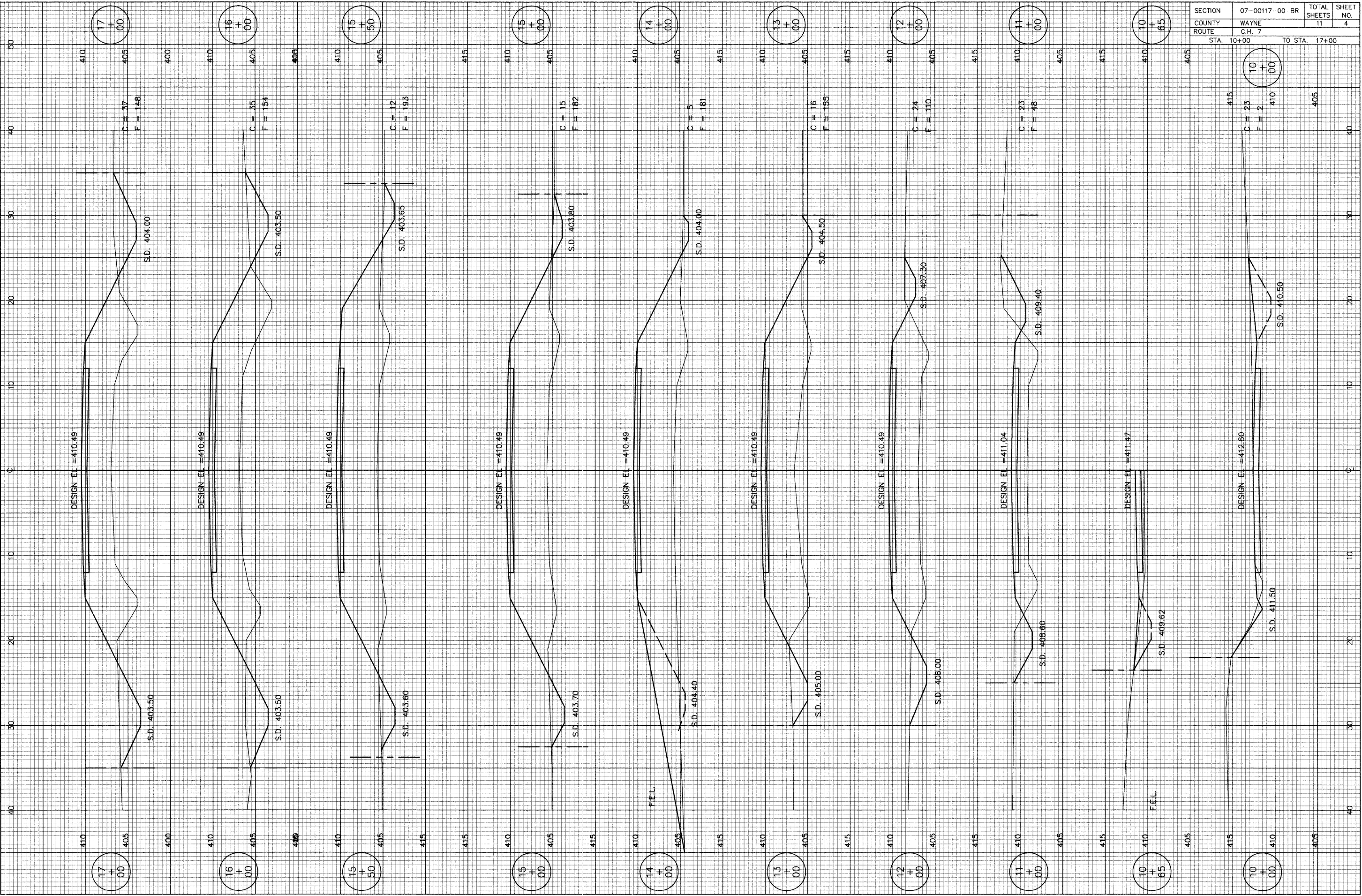
SHARRI GIFFORD



**CONNOR & CONNOR, Inc.**  
 CONSULTING ENGINEERS  
 210 East Locust Street  
 ROBINSON, ILLINOIS 62454  
 Phone: 618-544-8623  
 Fax: 618-544-3012  
 Licensed Surveyors

DATE: 3/23/2011  
 SCALE: 1" = 50'  
 DRAWN BY DJC  
 PROJECT: P-1548  
 SHEET: OF

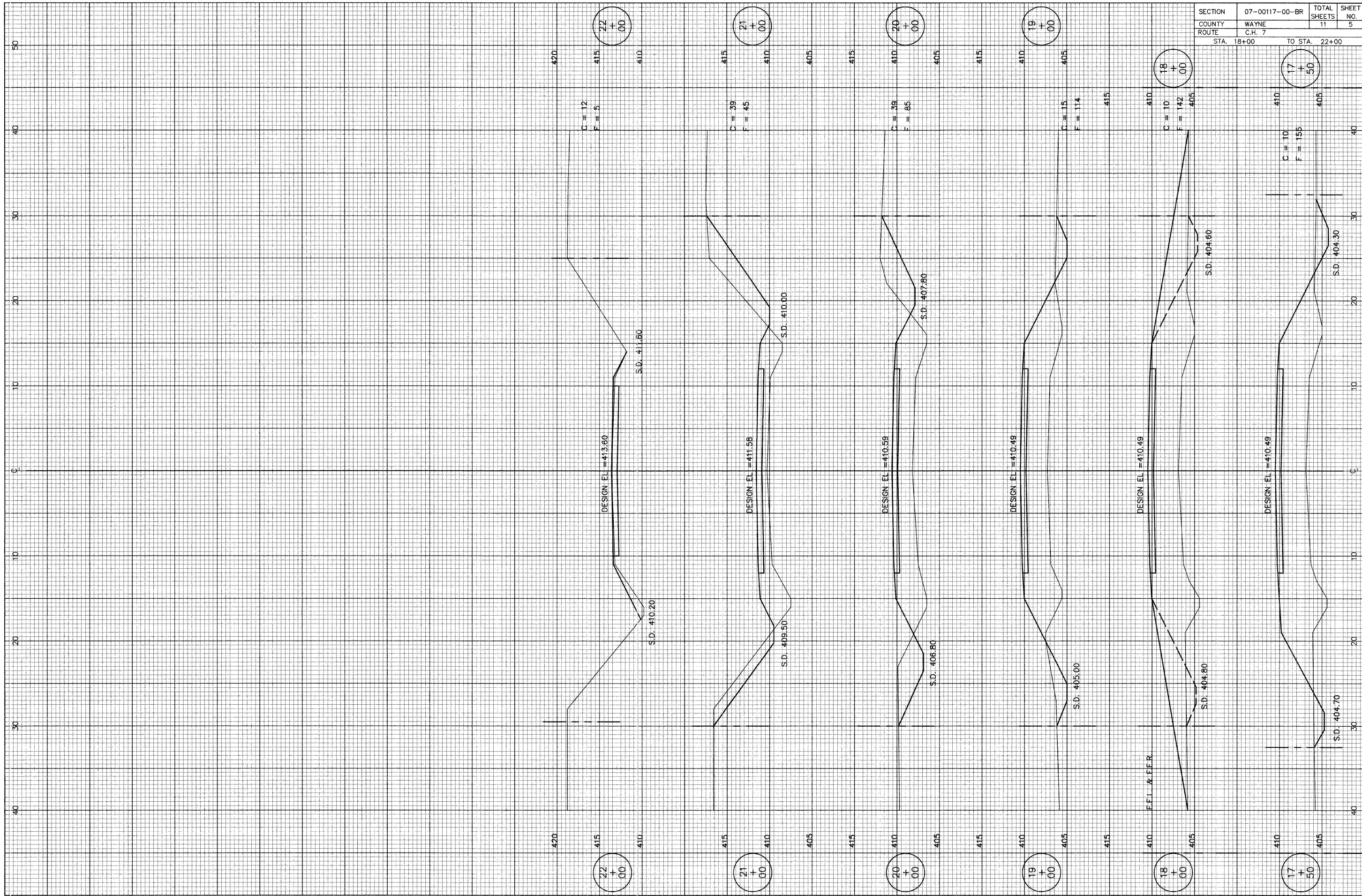
SECTION	07-00117-00-BR	TOTAL SHEETS	11	SHEET NO.	4
COUNTY	WAYNE				
ROUTE	C.H. 7				
STA. 10+00		TO STA. 17+00			





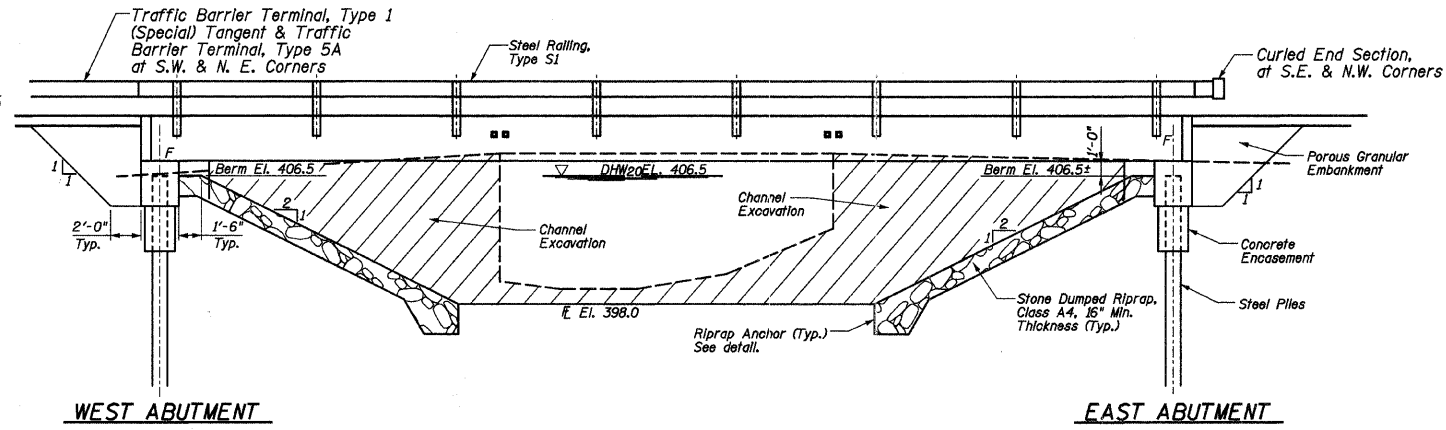
SECTION	07-00117-00-BR	TOTAL SHEETS	11	SHEET NO.	5
COUNTY	WAYNE				
ROUTE	C.H. 7				

STA. 18+00 TO STA. 22+00

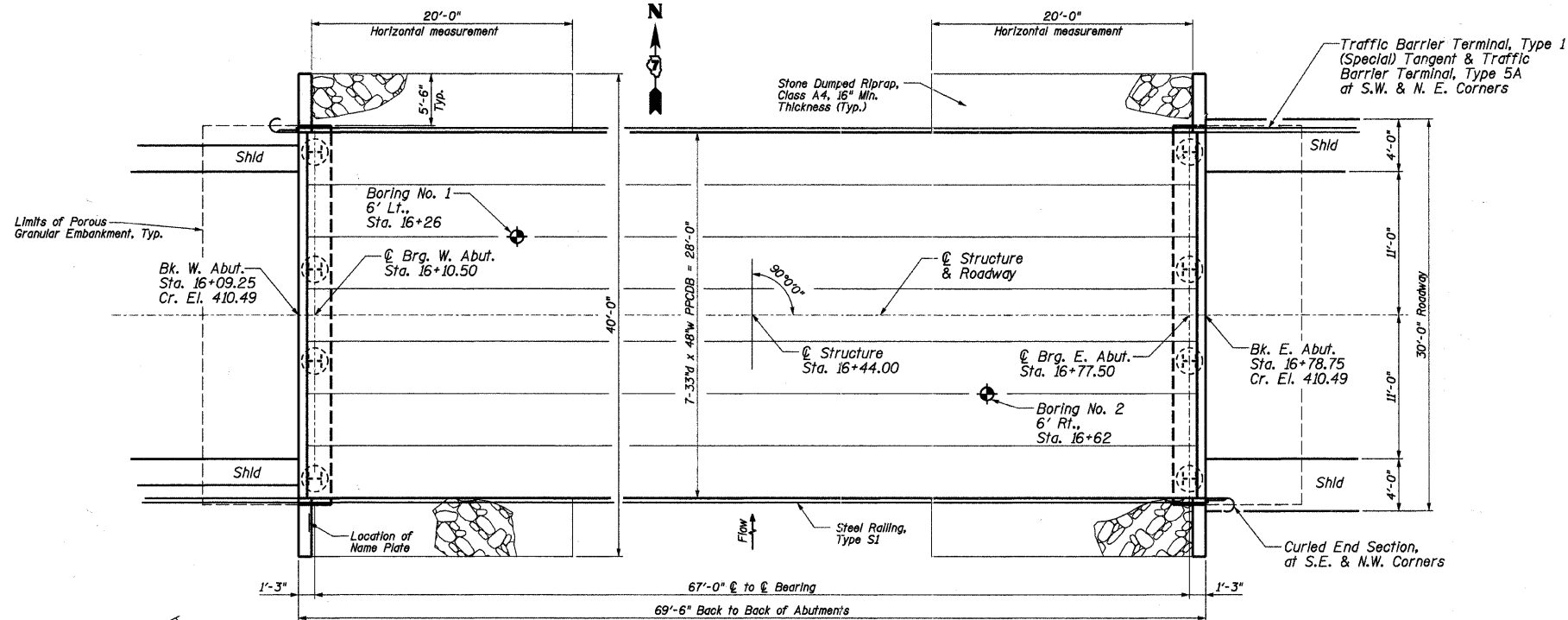


BM 1 - PK nail in corner fence post,  
48' Lt. of Sta. 11+00 - Elev. 412.18

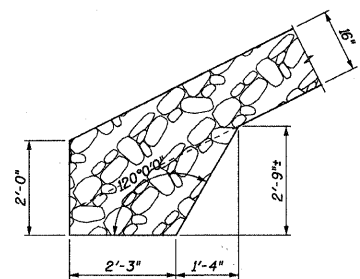
BM 2 - PK nail in fence post,  
22.8' Lt. of Sta. 18+23 - Elev. 407.85



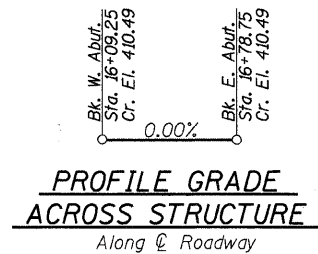
ELEVATION



PLAN



RIPRAP ANCHOR DETAIL



PROFILE GRADE ACROSS STRUCTURE

**WATERWAY DATA**  
(By Connor & Connor, Inc.)

Drainage Area = 4.985 Sq. Mi.

Flood	Freq. Yr.	Q C.F.S.	Opening Sq. Ft. Exist.	Opening Sq. Ft. Prop.	Natural H.W.E.	Head - Ft. Exist.	Head - Ft. Prop.	Headwater El. Exist.	Headwater El. Prop.
Design	20	1543	134	354	406.5	0.5	0.4	407.5	406.9
Base	100	2380	134	381	407.0	0.5	0.9	407.5	407.9

**PRECAST PRESTRESSED UNITS**

$f'_c = 6,000$  psi  
 $f_{ci} = 5,000$  psi  
 $f_{pu} = 270,000$  psi ( $\frac{1}{2}$ "  $\phi$  low lax. strands)  
 $f_{pbt} = 201,960$  psi ( $\frac{1}{2}$ "  $\phi$  low lax. strands)  
 $f_y = 60,000$  psi (reinforcement)

**SEISMIC DATA**

Seismic Performance Zone (SPZ) = 2  
 Soil Site Classification = D  
 $S_{D1} = 0.277$   $S_{D5} = 0.668$

**LOADING HL-93**

50#/sq. ft. included in dead load for future wearing surface.

**DESIGN SPECIFICATIONS**

2007 (4th Ed.) AASHTO LFRD Bridge Design Specifications, with 2008 & 2009 Interims.

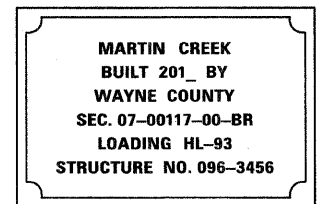
**DESIGN STRESSES**

**FIELD UNITS**  
 $f'_c = 3,500$  psi  
 $f_y = 60,000$  psi (reinforcement)

I certify that to the best of knowledge, information and belief, this bridge design is structurally adequate for the design loading shown on the plans. The design is an economical one for the style of structure and complies with requirements of the current AASHTO Standard Specifications for Highway Bridges.



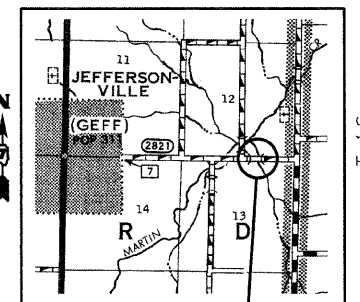
*Gary L. Hahn*  
 Gary L. Hahn  
 12-14-2011  
 Date of Signing  
 11-30-2012  
 Date of License Expiration



**NAME PLATE**

(See State Standard 515001 for details)

R. 7 E., 3rd P.M.



Project Location

**LOCATION SKETCH**

Existing Structure: Single span bridge with concrete deck on steel stringers supported on closed concrete abutments. To be removed. No salvage. 22'L. x 20'W.

**BILL OF MATERIALS (BRIDGE ONLY)**

ITEM	UNIT	TOTAL
Channel Excavation	Cu Yd	490
Porous Granular Embankment	Ton	100
Stone Dumped Riprap, Class A4	Ton	160
Removal of Existing Structures	Each	1
Concrete Structures	Cu Yd	25.0
Concrete Encasement	Cu Yd	2.8
PPCDB (33" Depth)	Sq Ft	1909
Reinforcement Bars	Pound	4100
Steel Railing, Type S1	Foot	139
Furnishing Steel Piles HP12x53	Foot	369
Driving Piles	Foot	369
Test Pile Steel HP12x53	Each	1
Pile Shoes	Each	8
Name Plates	Each	1
Terminal Marker - Direct Applied	Each	4

**GENERAL NOTES**

Channel excavation shall be excavated as shown within the limits of the proposed bridge, then tapered to the existing channel at the ROW line. If the Engineer deems the material satisfactory, it may be used to construct the roadway embankment.

The Contractor is hereby advised that very stiff soils will be encountered prior to the location of anticipated nominal required bearing. See the soil borings for further information.

Layout of slope protection system may be varied in the field to suit ground conditions as directed by the Engineer.

Reinforcement bars shall conform to the requirements of A.S.T.M. A 706 Grade 60 (IL. Modified).

See Specifications for Soil Borings.

Do not scale these drawings.

The abutment bearing seat surfaces for the precast prestressed concrete deck beams shall be adjusted by shimming to assure firm and even bearing. As required, 1/8" fabric adjusting shims of the dimensions of the Exterior Bearing Pad shall be provided for each bearing.

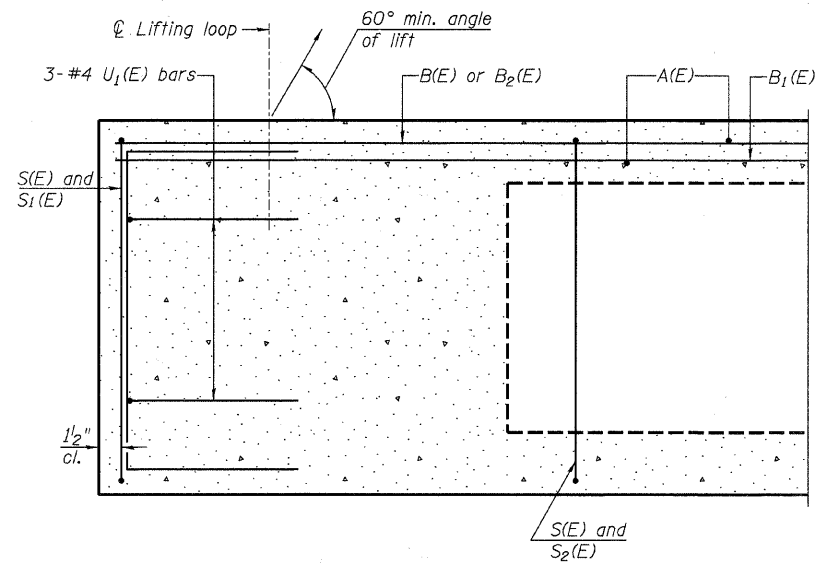
**RHUTASEL and ASSOCIATES, INC.**  
 CONSULTING ENGINEERS • LAND SURVEYORS  
 CENTRALIA, ILLINOIS  
 ILLINOIS DESIGN FIRM LICENSE NO. 184-000287

DESIGNED - BLT	REVISED -
CHECKED - GLH	REVISED -
DRAWN - JN	REVISED -
CHECKED - 12/14/2011	REVISED -

**STATE OF ILLINOIS**  
**DEPARTMENT OF TRANSPORTATION**

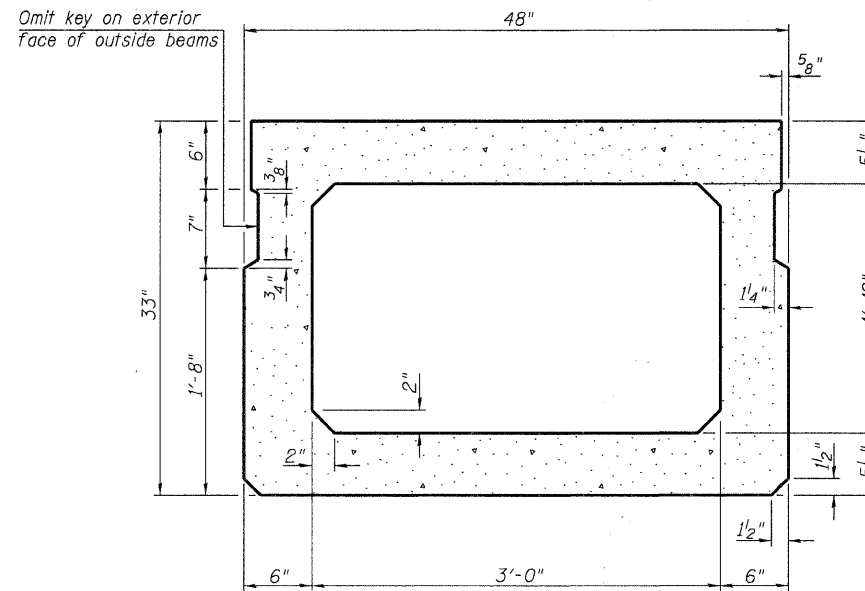
**GENERAL PLAN AND ELEVATION**  
**STRUCTURE NO. 096-3456**

F.A.S. RTE.	SECTION	COUNTY	TOTAL SHEETS	SHEET NO.
2821	07-00117-00-BR	WAYNE	11	6
CONTRACT NO. 95671				
RAAI JOB NO. 52111 ILLINOIS FED. AID PROJECT				

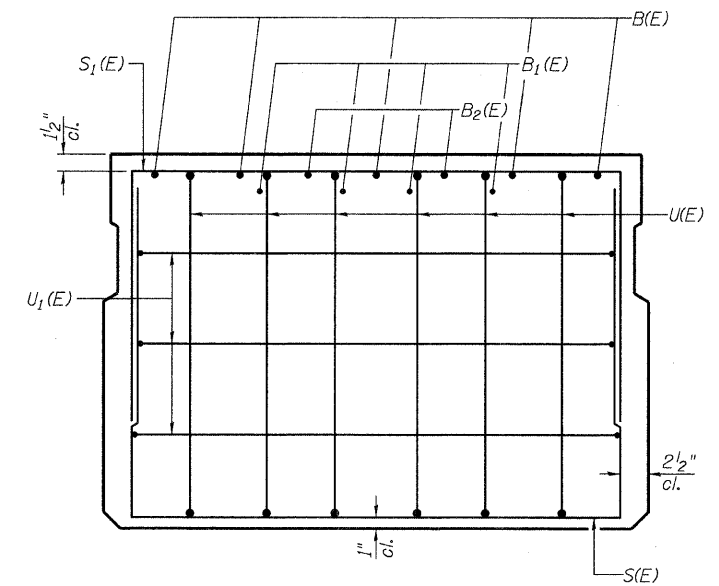


**SECTION A-A**

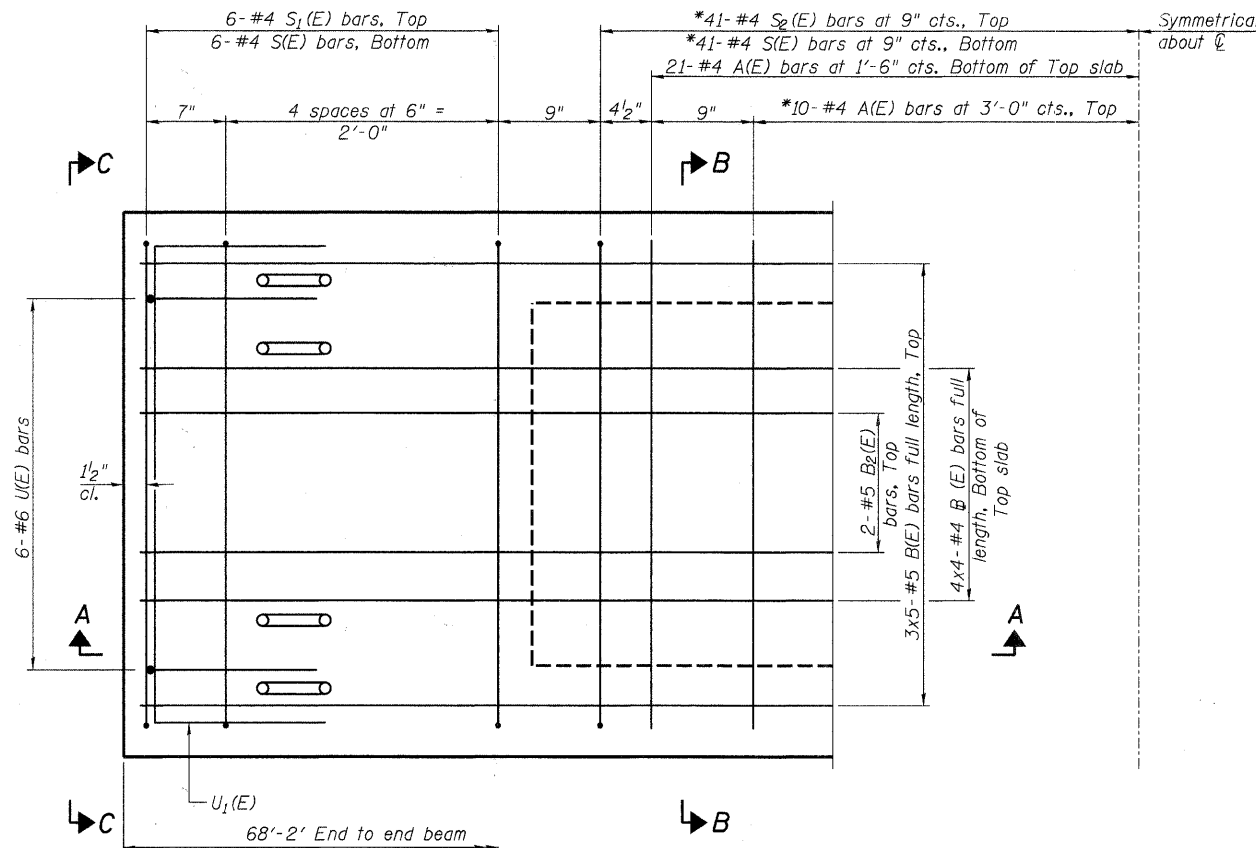
\* plus 1 bar at  $\varnothing$



**SECTION B-B**  
(Showing dimensions)

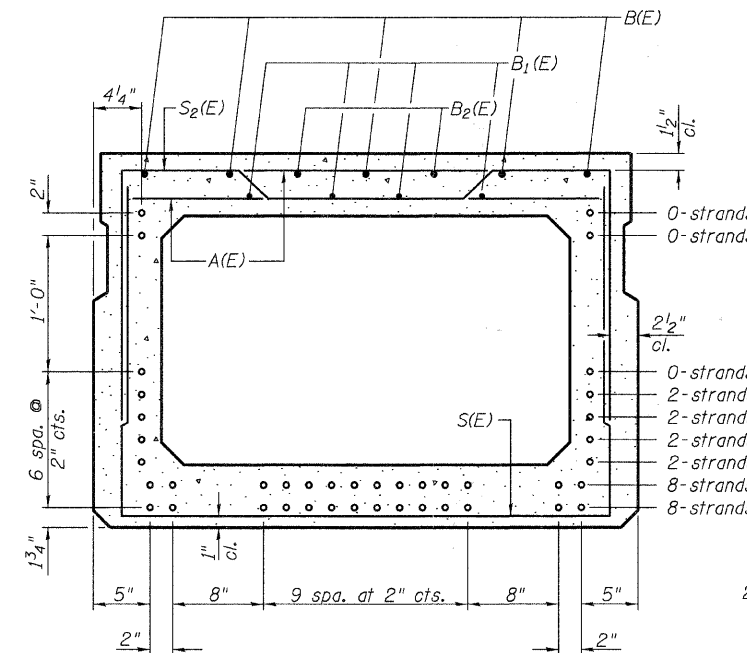


**VIEW C-C**



**PLAN VIEW**

Note: Spacing of S(E) and S<sub>2</sub>(E) bars may be adjusted up to 4" in the immediate area of the transverse tie diaphragms to miss the block outs for the transverse ties.



**SECTION B-B**  
(Showing reinforcement and permissible strand locations)  
Note: Place the number of strands specified in each row symmetrically about the centerline of beam in the permissible strand locations shown.

**BAR LIST**  
**ONE BEAM ONLY**  
(For information only)

Bar	No.	Size	Length	Shape
A(E)	63	#4	3'-7"	—
B(E)	15	#5	24'-4"	—
B <sub>1</sub> (E)	16	#4	18'-7"	—
B <sub>2</sub> (E)	4	#5	10'-0"	—
S(E)	95	#4	8'-5"	U
S <sub>1</sub> (E)	12	#4	7'-3"	U
S <sub>2</sub> (E)	83	#4	7'-6"	U
U(E)	12	#6	5'-0"	C
U <sub>1</sub> (E)	6	#4	6'-0"	C

Note: See sheet 8 of 11 for additional details and Bill of Material.

**MINIMUM BAR LAP**

#4 bar = 2'-0"  
#5 bar = 2'-6"

PD-3348-0

7-1-10

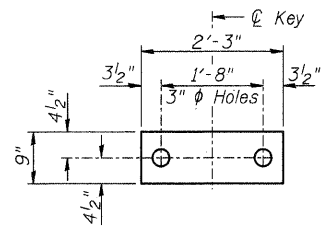
**RHUTASEL and ASSOCIATES, INC.**  
CONSULTING ENGINEERS • LAND SURVEYORS  
CENTRALIA, ILLINOIS      FREEBURG, ILLINOIS  
ILLINOIS DESIGN FIRM LICENSE NO. 184-000287

DESIGNED -	BLT	REVISED -	
CHECKED -	GLH	REVISED -	
DRAWN -	JN	REVISED -	
CHECKED -	12/14/2011	REVISED -	

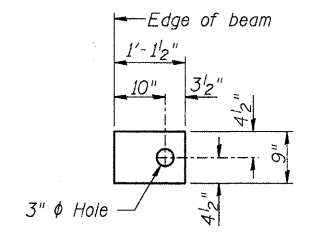
**STATE OF ILLINOIS**  
**DEPARTMENT OF TRANSPORTATION**

**33" x 48" PPC DECK BEAM DETAILS**  
**STRUCTURE NO. 096-3456**

F.A.S. ROUTE	SECTION	COUNTY	TOTAL SHEETS	SHEET NO.
2821	07-00117-00-BR	WAYNE	11	7
RAAI JOB NO. 52111			ILLINOIS FED. AID PROJECT	
			CONTRACT NO. 95671	



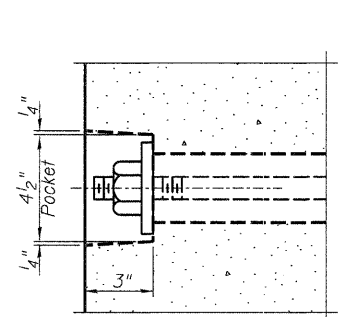
**FABRIC BEARING PAD**  
(Interior)



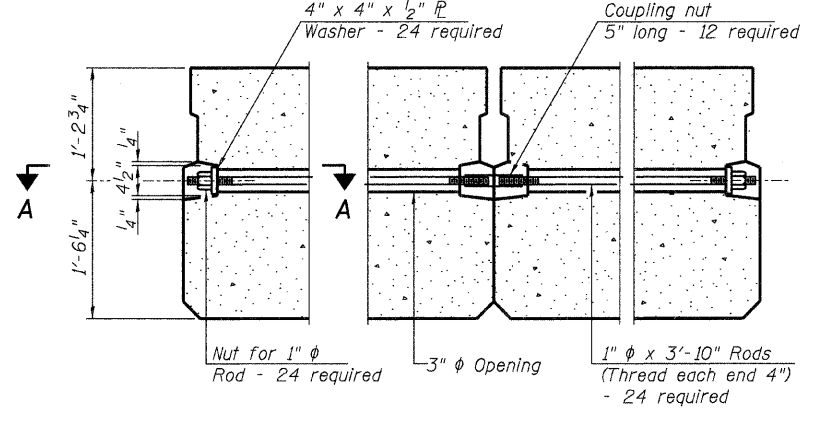
**FABRIC BEARING PAD**  
(Exterior)

**FIXED**

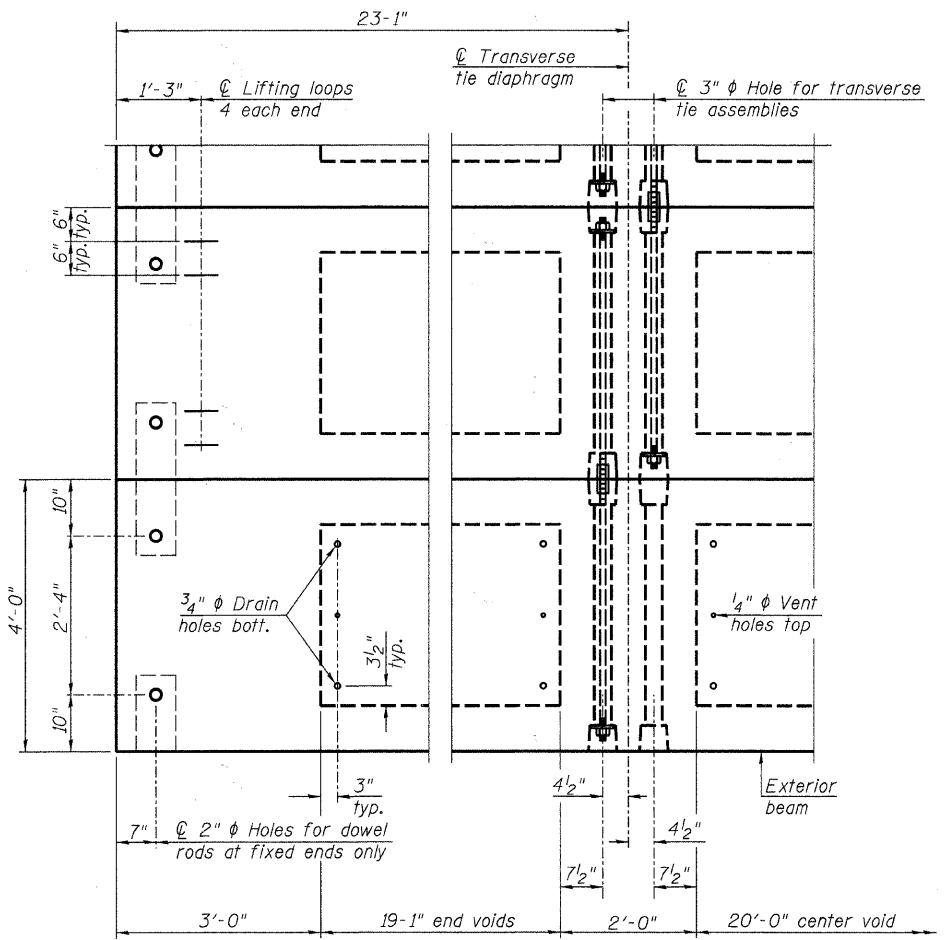
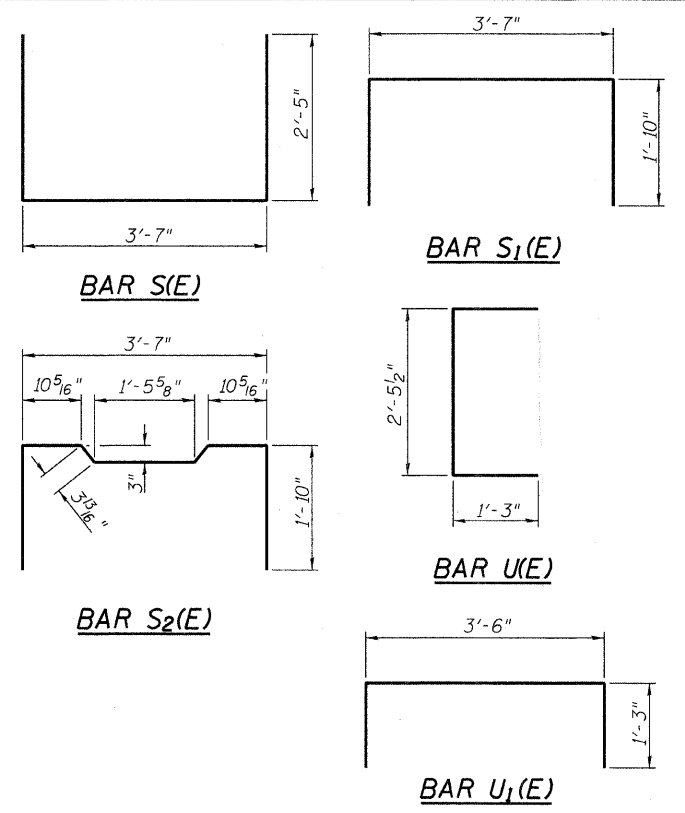
Notes: All bearing pads shall be 1" thick.



**SECTION A-A**

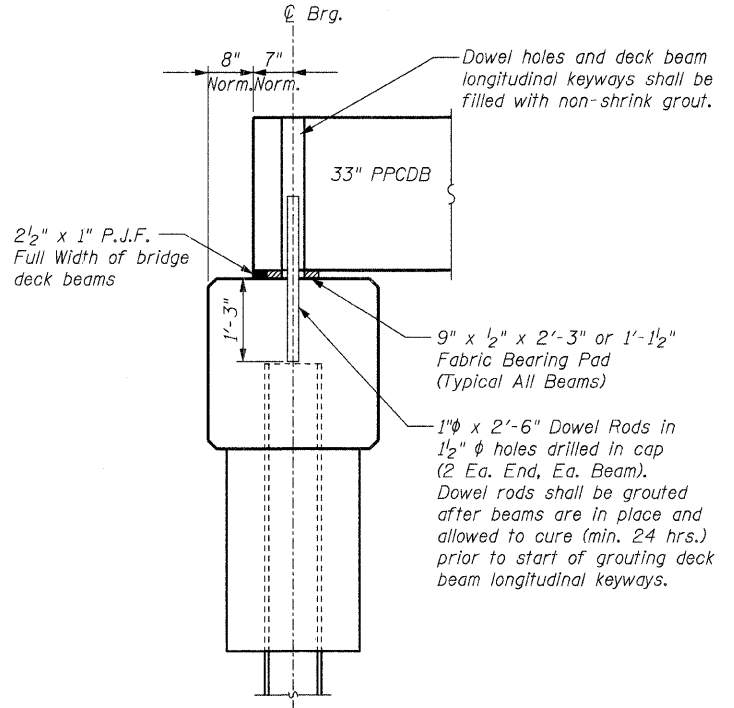


**TYPICAL TRANSVERSE TIE ASSEMBLY**

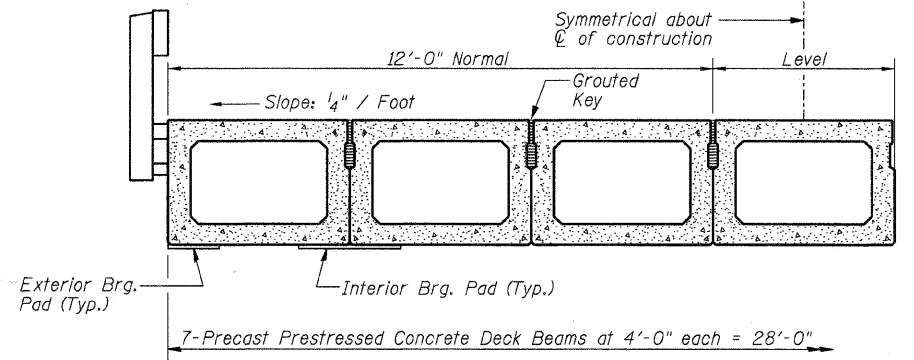


**PLAN VIEW**

Note: Connect beams in pairs with the transverse tie configuration shown.

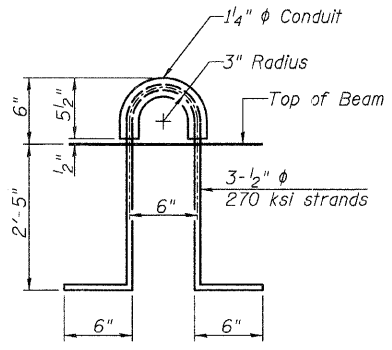


**FIXED BEARING ABUTMENT**



**HALF CROSS SECTION**

See Sheet 9 of 11 for the details showing the spacing and mounting of posts and rails to the PPCDB.



**LIFTING LOOP DETAIL**

**NOTES**

- Prestressing steel shall be uncoated high strength, low relaxation 7-wire strand, Grade 270. The nominal diameter shall be 1/2" and the nominal cross-sectional area shall be 0.153 sq. in.
- The 1" rods in the transverse tie assembly shall be tightened to a snug fit and the threads set. Pockets on exterior faces of bridge shall be filled with grout after transverse tie assembly is in place.
- Reinforcement bars shall conform to ASTM A 706, Grade 60. (See Special Provisions).
- Two 1/8" fabric adjusting shims of the dimensions of the exterior bearing pad shall be provided for each bearing pad location.
- A minimum 2 1/2" diameter lifting pin shall be used to engage the lifting loops during handling.
- Corrosion Inhibitor, per Article 1020.05(b)(12) and 1021.06 of the Standard Specifications, shall be used in the concrete for precast prestressed concrete deck beams.
- Compressive strength of prestressed concrete, f'c, shall be 6000 psi.
- Compressive strength of prestressed concrete at release, f'cl, shall be 5000 psi.

**BILL OF MATERIAL**

Precast Prestressed Conc. Deck Bms. (33" depth)	Sq. Ft.	1909
---	---------	------

PD-3348-OD

7-1-10

**RHUTASEL and ASSOCIATES, INC.**  
CONSULTING ENGINEERS • LAND SURVEYORS  
CENTRALIA, ILLINOIS  
ILLINOIS DESIGN FIRM LICENSE NO. 184-000287

DESIGNED - BLT	REVISED -
CHECKED - GLH	REVISED -
DRAWN - JN	REVISED -
CHECKED - 12/14/2011	REVISED -

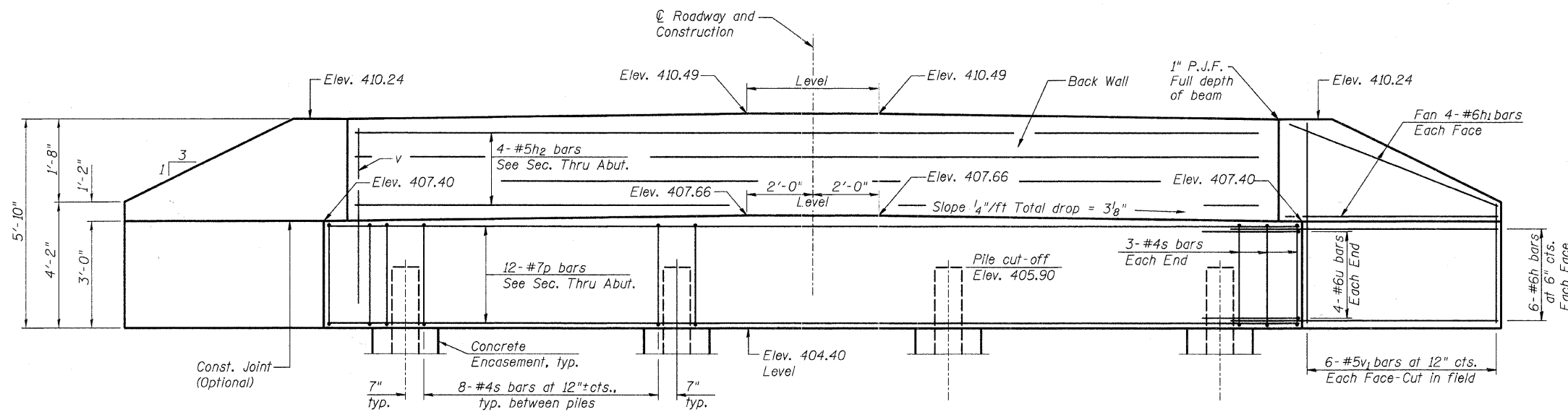
**STATE OF ILLINOIS**  
**DEPARTMENT OF TRANSPORTATION**

**33" x 48" PPC DECK BEAM DETAILS**  
**STRUCTURE NO. 096-3456**

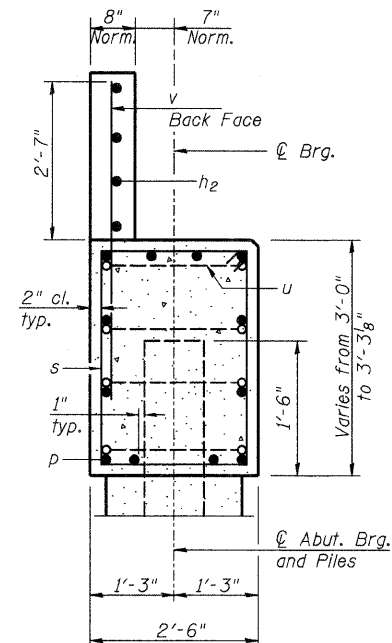
F.A.S. ROUTE	SECTION	COUNTY	TOTAL SHEETS	SHEET NO.
2821	07-00117-00-BR	WAYNE	11	8
CONTRACT NO. 95671				
RAAT JOB NO. 52111		ILLINOIS FED. AID PROJECT		



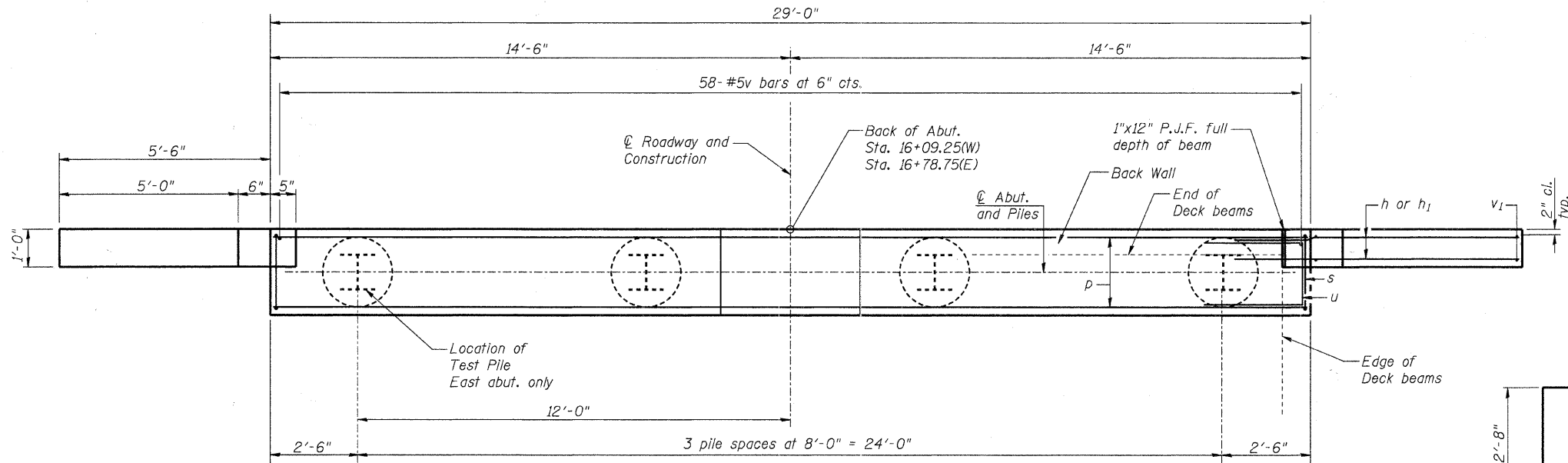




**ELEVATION**



**SEC. THRU ABUT.**  
(Normal to  $\mathcal{C}$ )



**PLAN**

**PILE DATA WEST ABUTMENT**

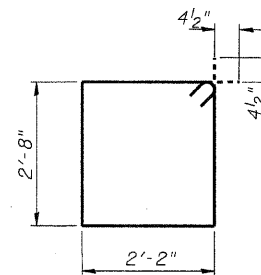
Type: Steel HP12x53  
 Nominal Required Bearing: 419 kips  
 Allowable Resistance Available: 139 kips  
 Estimated Length: 51'/pile  
 No. Production Piles: 4  
 No. Test Piles: 0

**PILE DATA EAST ABUTMENT**

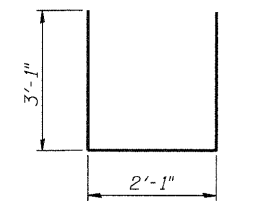
Type: Steel HP12x53  
 Nominal Required Bearing: 419 kips  
 Allowable Resistance Available: 139 kips  
 Estimated Length: 55'/pile  
 No. Production Piles: 3  
 No. Test Piles: 1

**GENERAL NOTES**

All exposed edges shall have standard  $\frac{3}{4}$ " chamfer, unless otherwise noted.  
 All clearances between rebar and form surface shall be 2", unless otherwise noted.  
 Space reinforcement in cap to miss PPCDB dowel rods.  
 The Steel H-piles shall be according to AASHTO M270 Grade 50.  
 The Contractor shall drive one (1) Steel HP12x53 Test Pile in a production location at the East abutment as directed by the Engineer before ordering the remainder of the piles.  
 The Test Pile shall be driven to 110 percent of the Nominal Required Bearing indicated in the pile data information.  
 The Contractor is hereby advised that very stiff soils will be encountered prior to the location of anticipated nominal required bearing. See the soil borings for further information.



**BAR s**



**BAR u**

**BILL OF MATERIAL FOR ONE ABUTMENT**

Bar	No.	Size	Length	Shape
h	24	#6	9'-6"	—
h <sub>1</sub>	16	#6	5'-9"	—
h <sub>2</sub>	4	#5	27'-8"	—
p	12	#7	28'-8"	—
s	30	#4	10'-5"	□
u	8	#6	8'-3"	—
v	58	#5	5'-0"	—
v <sub>1</sub>	24	#5	5'-6"	CUT IN FIELD
Concrete Structures			Cu. Yd.	12.5
Concrete Encasement			Cu. Yd.	1.4
Reinforcement Bars			Pound	2050
Furnishing Steel			W. Abut.	204
Piles, HP12x53			E. Abut.	165
Driving Piles			Foot	W. Abut. 204
			E. Abut.	165
Test Pile, Steel HP12x53			Each	W. Abut. 0
			E. Abut.	1
Pile Shoes			Each	8

For details of piles and Concrete Encasement, see Sheet 11 of 11.

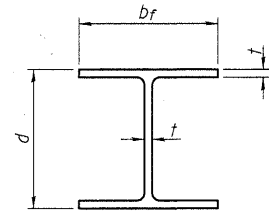
**RHUTASEL and ASSOCIATES, INC.**  
 CONSULTING ENGINEERS • LAND SURVEYORS  
 CENTRALIA, ILLINOIS      FREEBURG, ILLINOIS  
 ILLINOIS DESIGN FIRM LICENSE NO. 184-000287

DESIGNED -	BLT	REVISED -	
CHECKED -	GLH	REVISED -	
DRAWN -	JN	REVISED -	
CHECKED -	12/14/2011	REVISED -	

**STATE OF ILLINOIS**  
**DEPARTMENT OF TRANSPORTATION**

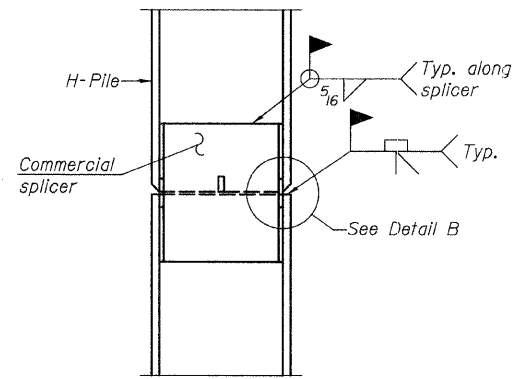
**ABUTMENT DETAILS**  
**STRUCTURE NO. 096-3456**

F.A.S. ROUTE	SECTION	COUNTY	TOTAL SHEETS	SHEET NO.
2821	07-00117-00-BR	WAYNE	11	10
RAAI JOB NO. 52111			ILLINOIS FED. AID PROJECT	
			CONTRACT NO. 95671	

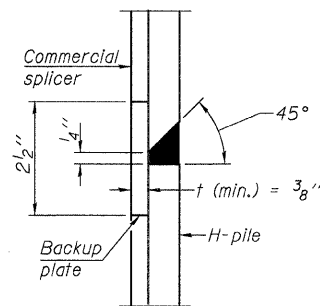


**STEEL PILE TABLE**

Designation	Depth d	Flange width b <sub>f</sub>	Web and Flange thickness t	Encasement diameter A
HP 14x117	14 1/4"	14 7/8"	13/16"	30"
x102	14"	14 3/4"	1/16"	30"
x89	13 7/8"	14 3/4"	5/8"	30"
x73	13 5/8"	14 5/8"	1/2"	30"
HP 12x84	12 1/4"	12 1/4"	1/16"	24"
x74	12 1/8"	12 1/4"	5/8"	24"
x63	12"	12 1/8"	1/2"	24"
x53	11 3/4"	12"	7/16"	24"
HP 10x57	10"	10 1/4"	9/16"	24"
x42	9 3/4"	10 1/8"	7/16"	24"
HP 8x36	8"	8 1/8"	7/16"	18"

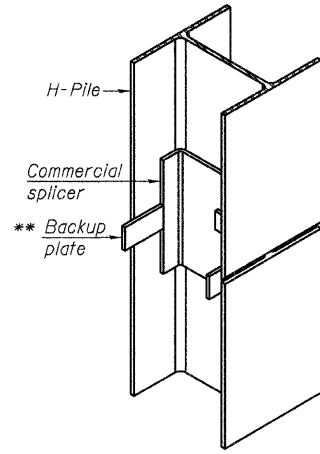


**ELEVATION**

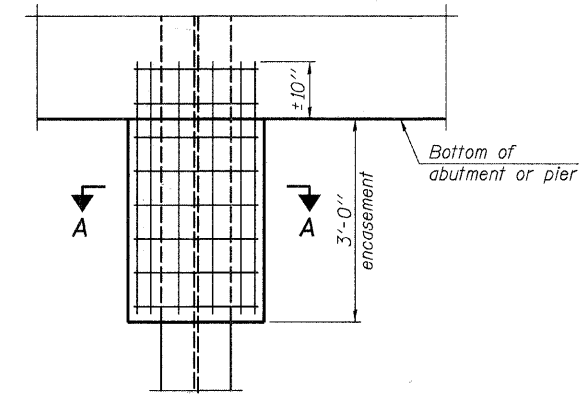


**DETAIL "B"**

**WELDED COMMERCIAL SPLICE**

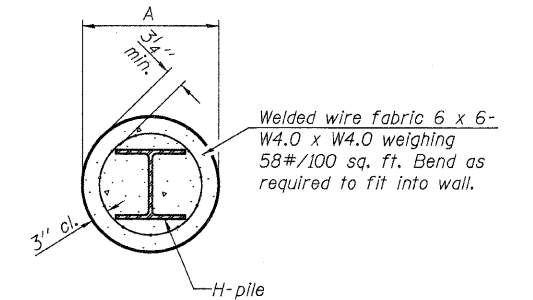


**ISOMETRIC VIEW**



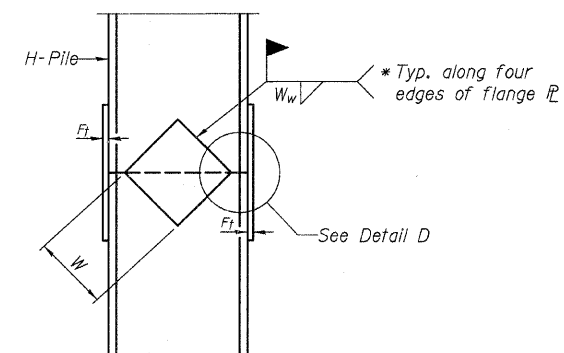
**ELEVATION**

**PILE ENCASEMENT**

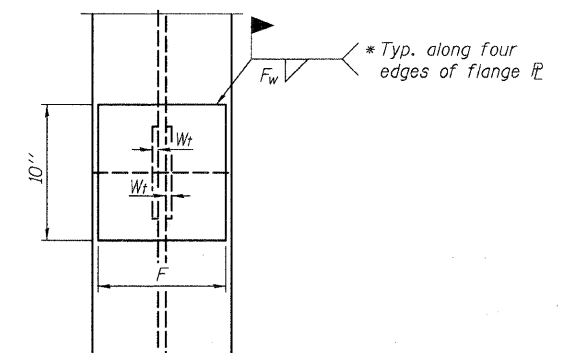


**SECTION A-A**

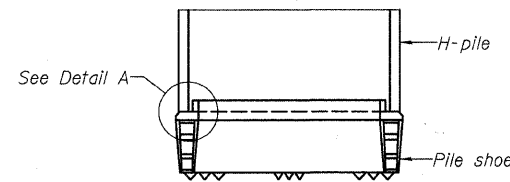
Note:  
Forms for encasement may be omitted when soil conditions permit.



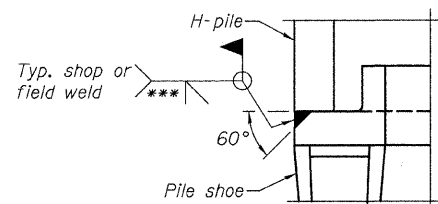
**ELEVATION**



**END VIEW**

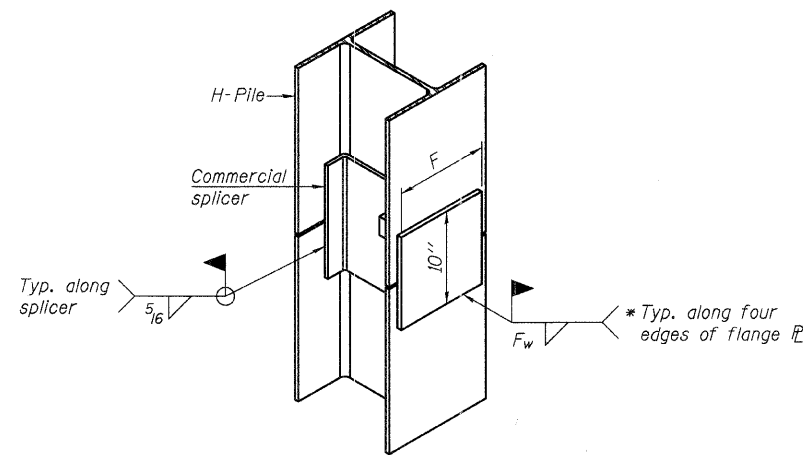


**ELEVATION**



**DETAIL A**

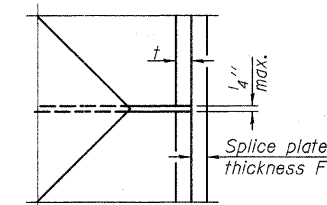
**H-PILE SHOE ATTACHMENT**



**ISOMETRIC VIEW**

**WELDED COMMERCIAL SPLICE ALTERNATE**

- \* Interrupt welds 1/4" from end of web and/or each flange.
- \*\* Remove portions of backup plates that extend outside the flanges.
- \*\*\* Weld size per pile shoe manufacturer (5/16" min.).



**DETAIL D**

**WELDED PLATE FIELD SPLICE**

Designation	F	F <sub>t</sub>	F <sub>w</sub>	W	W <sub>t</sub>	W <sub>w</sub>
HP 14x117	12 1/2"	1"	7/8"	7 3/4"	5 1/2"	1/2"
x102	12 1/2"	7/8"	3/4"	7 3/4"	5 1/2"	1/2"
x89	12 1/2"	3/4"	1/16"	7 3/4"	5 1/2"	1/2"
x73	12 1/2"	5/8"	9/16"	7 3/4"	5 1/2"	1/2"
HP 12x84	10"	7/8"	1/16"	6 1/2"	5 1/2"	1/2"
x74	10"	7/8"	1/16"	6 1/2"	5 1/2"	1/2"
x63	10"	5/8"	1/2"	6 1/2"	1/2"	3/8"
x53	10"	5/8"	1/2"	6 1/2"	1/2"	3/8"
HP 10x57	8"	3/4"	9/16"	5 1/4"	1/2"	3/8"
x42	8"	5/8"	9/16"	5 1/4"	1/2"	3/8"
HP 8x36	7"	5/8"	7/16"	4 1/4"	1/2"	3/8"

Note:  
The steel H-piles shall be according to AASHTO M270 Grade 50.

F-HP

7-1-10

**RHUTASEL and ASSOCIATES, INC.**  
CONSULTING ENGINEERS • LAND SURVEYORS  
CENTRALIA, ILLINOIS FREEBURG, ILLINOIS  
ILLINOIS DESIGN FIRM LICENSE NO. 184-000287

DESIGNED - BLT  
CHECKED - GLH  
DRAWN - JN  
CHECKED - 12/14/2011

REVISED -  
REVISED -  
REVISED -  
REVISED -

**STATE OF ILLINOIS**  
**DEPARTMENT OF TRANSPORTATION**

**HP PILE DETAILS**  
**STRUCTURE NO. 096-3456**

F.A.S. ROUTE	SECTION	COUNTY	TOTAL SHEETS	SHEET NO.
2821	07-00117-00-BR	WAYNE	11	11
CONTRACT NO. 95671				

RAAT JOB NO. 52111 ILLINOIS FED. AID PROJECT