

GENERAL NOTES

1. ILLINOIS STATE LAW REQUIRES A 48-HOUR NOTICE BE GIVEN TO UTILITIES BEFORE DIGGING. FIELD MARKING OF FACILITIES MAY BE OBTAINED BY CONTACTING J.U.L.I.E. (800-892-0123) OR FOR NON-MEMBERS, THE UTILITY COMPANY DIRECTLY. AGENCIES KNOWN TO HAVE FACILITIES WITHIN THE PROJECT INCLUDE:

A. CABLE TELEVISION -
CHARTER COMMUNICATIONS
4767 SIGNATURE INDUSTRIAL DRIVE, EDWARDSVILLE, ILLINOIS 62025
(618) 307-5730

B. GAS & ELECTRIC -
AMEREN U.E. COMPANY,
700 OAKWOOD AVENUE, ALTON, ILLINOIS 62002
(618) 463-4043 (GAS),
(618) 463-4051 (ELECTRIC)

C. STORM -
VILLAGE OF GODFREY PUBLIC WORKS
P.O. BOX 5067
GODFREY, ILLINOIS 62035
(618) 466-3334

D. TELECOMMUNICATIONS -
AT&T
203 GOETHE, COLLINGSVILLE, ILLINOIS 62234
(618) 346-6400

E. WATER -
ILLINOIS AMERICAN WATER COMPANY
4436 INDUSTRIAL DRIVE, ALTON, ILLINOIS 62002
(618) 466-9429

2. FOR UTILITY LOCATING PURPOSES, THIS PROJECT IS LOCATED IN THE SECTION 4, TOWNSHIP 5 NORTH, RANGE 10 WEST OF THE THIRD PRINCIPAL MERIDIAN.

3. EXCEPT WHERE DESIGNATED OTHERWISE, THE LOCATIONS AND/OR DEPTHS OF UNDERGROUND UTILITIES HAVE COME FROM RECORD INFORMATION PROVIDED TO SMS BY OWNER AND UTILITY COMPANIES AND MUST BE CONSIDERED APPROXIMATE AND NOT ENTIRELY COMPLETE.

4. THE CONTRACTOR SHALL USE ALL DUE PRECAUTION NOT TO DAMAGE OR DISTURB ANY UNDERGROUND UTILITIES. THE ENTIRE COST OF MAKING REPAIRS TO, OR REPLACEMENT OF, ANY DAMAGED LINE WILL BE THE FULL RESPONSIBILITY OF THE CONTRACTOR IN ACCORDANCE WITH ARTICLE 105.07 OF THE LATEST EDITION OF THE I.D.O.T. "STANDARD SPECIFICATIONS FOR ROAD AND BRIDGE CONSTRUCTION".

5. ALL REMOVAL WORK SHALL BE DONE ACCORDING TO THE LATEST EDITION OF THE I.D.O.T. "STANDARD SPECIFICATIONS FOR ROAD AND BRIDGE CONSTRUCTION".

6. REMOVAL EXCAVATIONS WITHIN 2 FEET OF THE LIMITS OF THE PAVEMENT, SIDEWALK, CURB, ETC. SHALL BE BACKFILLED WITH CRUSHED STONE AGGREGATE (IDOT GRADATION CA-6) COMPACTED TO 95% OF THE STANDARD PROCTOR OF THE MATERIAL.

7. ALL SURPLUS MATERIALS RESULTING FOR SITE GRADING, CONSTRUCTION OPERATIONS, REMOVAL ITEMS, ETC. SHALL BE REMOVED FROM THE SITE BY THE CONTRACTOR AND DISPOSED OF BY AND AT THE EXPENSE OF THE CONTRACTOR ACCORDING TO ARTICLE 202.03 OF THE IDOT STANDARD SPECIFICATIONS.

8. ALL PAVING, BASE COURSE, SUBGRADE, AND CONCRETE CURB CONSTRUCTION SHALL BE PERFORMED IN ACCORDANCE WITH THE LATEST EDITION OF THE I.D.O.T. "STANDARD SPECIFICATIONS FOR ROAD AND BRIDGE CONSTRUCTION".

9. ALL SIDEWALK CONSTRUCTION SHALL BE PERFORMED IN ACCORDANCE WITH SECTION 424 OF THE I.D.O.T. STANDARD SPECIFICATIONS. ALL ACCESSIBLE RAMPS SHALL BE CONSTRUCTED IN ACCORDANCE WITH IDOT HIGHWAY STANDARD 424001 AND THE ILLINOIS CAPITAL DEVELOPMENT BOARD "ILLINOIS ACCESSIBILITY CODE".

10. PAINT PAVEMENT MARKINGS SHALL BE CONSTRUCTED IN ACCORDANCE WITH SECTION 780 OF THE I.D.O.T. STANDARD SPECIFICATIONS, HIGHWAY STANDARD 780001 AND THE MANUAL ON UNIFORM TRAFFIC CONTROL DEVICES (MUTCD).

11. ALL LETTERS AND SYMBOLS SHALL BE "LARGE" AS DESIGNATED ON HIGHWAY STANDARD 780001.

12. EXISTING STRIPING, PAVEMENT MARKINGS, ETC. IN AREAS WHERE THE PAVEMENT SURFACE IS TO REMAIN SHALL BE REMOVED OR HIDDEN IN A MANNER THAT DOES NOT IMPAIR THE EXISTING SURFACE PRIOR TO APPLICATION OF NEW MARKINGS.

13. ALL EROSION CONTROL WORK SHALL BE PERFORMED ACCORDING TO SECTION 280 OF THE IDOT STANDARD SPECIFICATIONS, IDOT HIGHWAY STANDARD 280001.

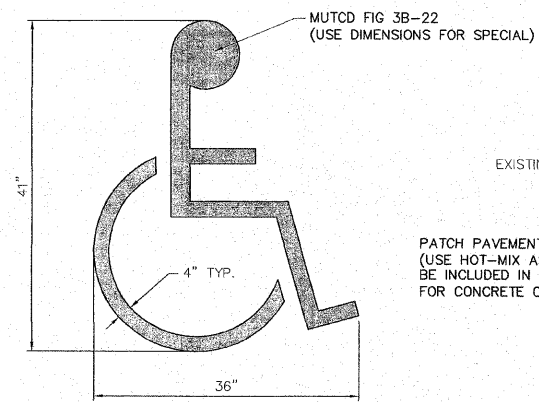
14. THE CONTRACTOR SHALL PROVIDE MEASURES TO PREVENT SEDIMENT FROM BEING TRACKED ONTO PUBLIC OR PRIVATE ROADWAYS. ANY SEDIMENT REACHING A PUBLIC OR PRIVATE ROAD SHALL BE REMOVED BEFORE THE END OF EACH WORKDAY AND TRANSPORTED TO A CONTROLLED SEDIMENT DISPOSAL AREA.

15. AT LOCATIONS WHERE THE GROUND HAS BEEN DISTURBED AND NOT OTHER SURFACE RESTORATION IS INDICATED, THE CONTRACTOR SHALL RESTORE THE AREA BY CLASS 1B SEEDING AND MULCH, METHOD 2. ALL PERMANENT SEEDING SHALL BE PERFORMED IN ACCORDANCE WITH SECTION 250 OF THE IDOT STANDARD SPECIFICATIONS, EXCEPT THAT THE USE OF EMULSIFIED ASPHALT FOR STABILIZATION WILL NOT BE ALLOWED. THE CONTRACTOR SHALL MAINTAIN THE SEEDED AREAS UNTIL ADEQUATE GRASS COVER IS ACHIEVED. ALL WASH-OUTS SHALL BE FILLED AND RESEDED.

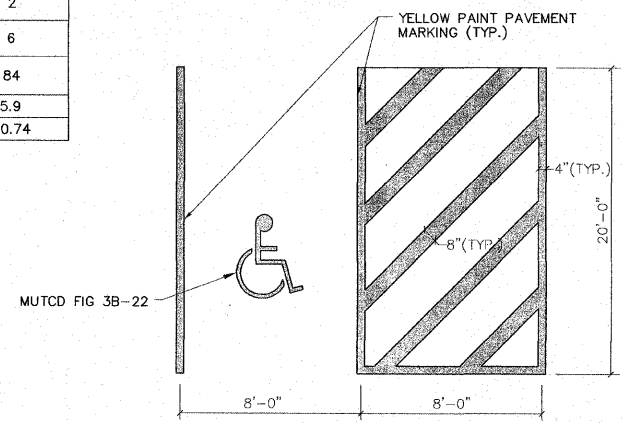
SUMMARY OF QUANTITIES

CONSTRUCTION TYPE CODE 0031			
PAY ITEM #	DESCRIPTION	UNIT	QUANTITY
21101505	TOPSOIL EXCAVATION AND PLACEMENT	CU YD	175
21101605	TOPSOIL FURNISH AND PLACE, 2"	SQ YD	3630
21400100	GRADING AND SHAPING DITCHES	FOOT	750
* 25000115	SEEDING, CLASS 1B	ACRE	0.75
* 25000400	NITROGEN FERTILIZER NUTRIENT	POUND	68
* 25000500	PHOSPHORUS FERTILIZER NUTRIENT	POUND	68
* 25000600	POTASSIUM FERTILIZER NUTRIENT	POUND	68
* 25000700	AGRICULTURAL GROUND LIMESTONE	TON	2
* 25100115	MULCH, METHOD 2	ACRE	0.75
28100105	STONE RIPRAP, CLASS A3	SQ YD	12
42400800	DETECTABLE WARNINGS	SQ FT	16
60600095	CLASS SI CONCRETE (OUTLET)	CU YD	1
60600605	CONCRETE CURB, TYPE B	FOOT	265
607100100	MOBILIZATION	L SUM	1
72000100	SIGN PANEL - TYPE 1	SQ FT	2
72900100	METAL POST - TYPE A	FOOT	11
78001100	PAINT PAVEMENT MARKING - LETTERS AND SYMBOLS	SQ FT	5
* 78001110	PAINT PAVEMENT MARKING - LINE 4"	FOOT	700
* 78001130	PAINT PAVEMENT MARKING - LINE 6"	FOOT	100
* 78001140	PAINT PAVEMENT MARKING - LINE 8"	FOOT	100
* X0326406	INFORMATION KIOSK COMPLETE	EACH	1
X4240420	PORTLAND CEMENT CONCRETE SIDEWALK 4 INCH, SPECIAL	SQ FT	3420
X5030550	PROTECTIVE COAT (SPECIAL)	SQ YD	117
X7010216	TRAFFIC CONTROL AND PROTECTION, SPECIAL	L SUM	1
XX003816	FURNISHING AND INSTALLING CONCRETE WHEEL STOPS	EACH	10
* A2005616	TREE, OSTRYA VIRGINIANA (AMERICAN HOPHORNBEAM), 2" CALIPER, BALLED AND BURLAPPED	EACH	2
* B2001114	TREE, CERCIS CANADENSIS (EASTERN REDBUD), 1-3/4" CALIPER, TREE FORM, BALLED AND BURLAPPED	EACH	6
* C2C058G2	SHRUB, RHUS AROMATICA GRO-Low (GRO-LOW FRAGRANT SUMAC), CONTAINER GROWN, 2-GALLON	EACH	84
* K0012980	PERENNIAL PLANTS, ORNAMENTAL TYPE, QUART POT	UNIT	5.9
* K0012990	PERENNIAL PLANTS, ORNAMENTAL TYPE, GALLON POT	UNIT	0.74

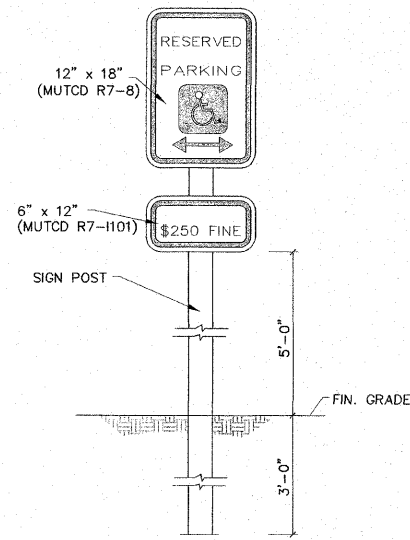
* SPECIALTY ITEMS



ACCESSIBLE SYMBOL PAVEMENT MARKING (MUTCD FIGURE 3B-22)
N.T.S.



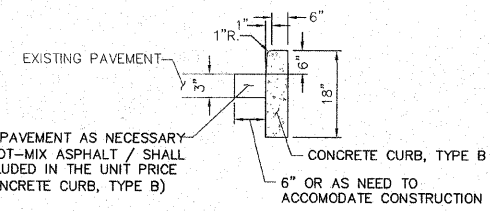
ACCESSIBLE PAVEMENT MARKING
N.T.S.



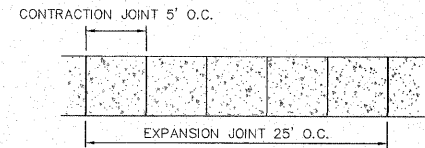
HANDICAPPED SIGNS AND POSTS TO CONFORM WITH U.S. DEPARTMENT OF TRANSPORTATION MANUAL ON UNIFORM TRAFFIC CONTROL DEVICES.

STANDARD HANDICAPPED PARKING SIGN TO BE MOUNTED WITH BOTTOM OF SIGN 5'-0" ABOVE GRADE

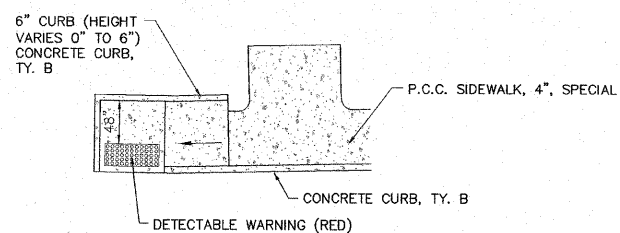
ACCESSIBLE PARKING SIGN
N.T.S.



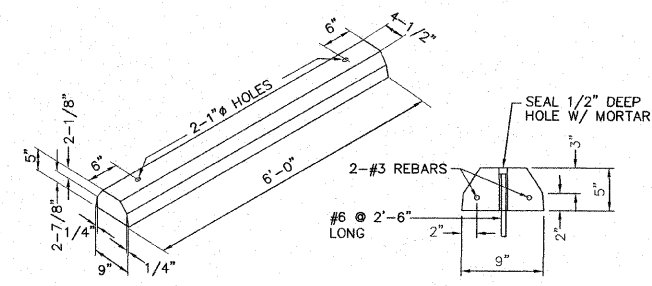
1 CONCRETE CURB TYPE B
N.T.S.



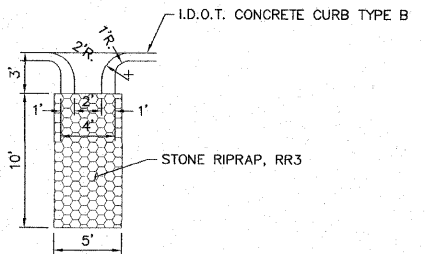
2 CONCRETE SIDEWALK JOINT DETAIL
N.T.S.



3 ACCESSIBLE CURB RAMP
N.T.S.



4 CONCRETE WHEEL STOP
N.T.S.



5 CLASS SI CONCRETE (OUTLET)
N.T.S.

SECTION	COUNTY	TOTAL SHEETS	SHEET NO.
08-00021-00-PK	MADISON	9	2
CONTRACT NO. 97473			

SMS Sheppard, Morgan & Schwaab, Inc.
 CONSULTING ENGINEERS AND LAND SURVEYORS
 115 Market Street, P.O. Box 5, Alton, IL 62002 618-262-0755 Email: me@smssheppard.com
 10 Central Industrial Drive, Suite 5, Granite City, IL 62040 618-877-8700 Email: me@smssheppard.com
 DESIGN FIRM # 184-000992

IMPROVEMENT PLANS FOR HOFFMAN GARDENS
VILLAGE OF GODFREY, ILLINOIS
SUMMARY OF QUANTITIES / SITE DETAILS

DWG. NO.	HOFFMAN SITE DETAILS.DWG
REF. BK.	PG.
JOB NO.	437560
DSN. BY:	SJW/DDT
DWN. BY:	BCS
CHK. BY:	SJW
DATE:	JANUARY, 2012
SHEET	C1 OF 9

S:\land_projects\GODFREY PK'S (4/25/10)\HOFFMAN GARDENS\dwg\HOFFMAN SITE DETAILS.dwg, 1/16/2012 1:41:18 PM, bsb@smssheppard.com