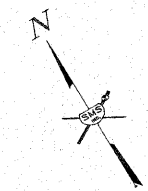
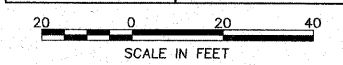


SECTION	COUNTY	TOTAL SHEETS	SHEET NO.
08-00021-00-PK	MADISON	9	5
CONTRACT NO. 97473			

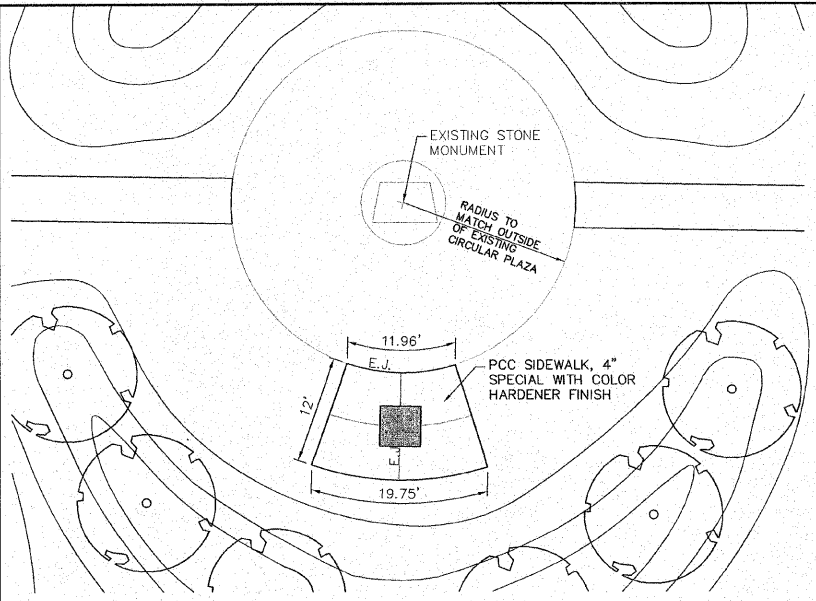


REVISIONS

**SMS ENGINEERS**  
 Sheppard, Morgan & Schwaab, Inc.  
 CONSULTING ENGINEERS AND LAND SURVEYORS  
 216 Market Street, P.O. Box E, Alton, IL 62002 618/462-9795 E-mail: mail@smsengineers.com  
 10 Central Industrial Drive, Suite 3, Geneva, IL 60135 618/777-2000 E-mail: mail@smsengineers.com  
 DESIGN FIRM # 184-000992

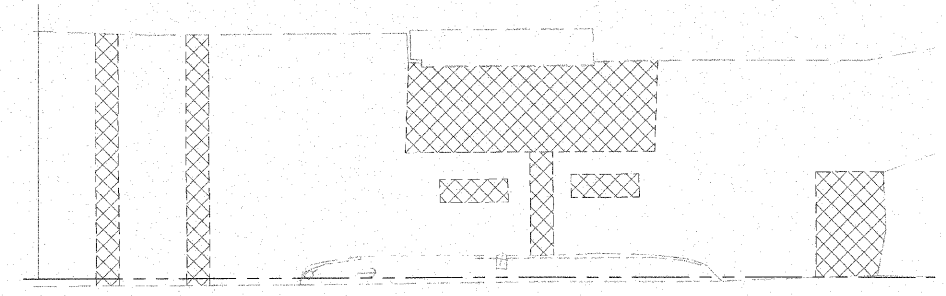
**IMPROVEMENT PLANS FOR HOFFMAN GARDENS  
 VILLAGE OF GODFREY, ILLINOIS  
 PROPOSED SITE PLAN**

DWG. NO.	HOFFMAN PROPOSED SITE.DWG
REF. BK.	PG.
JOB NO.	437560
DSN. BY:	SJW/DDT
DWN. BY:	BCS
CHK. BY:	SJW
DATE:	JANUARY, 2012
SCALE:	1"=20'
SHEET	C4 OF 9



**KIOSK SIDEWALK DETAIL**  
 1"=10'

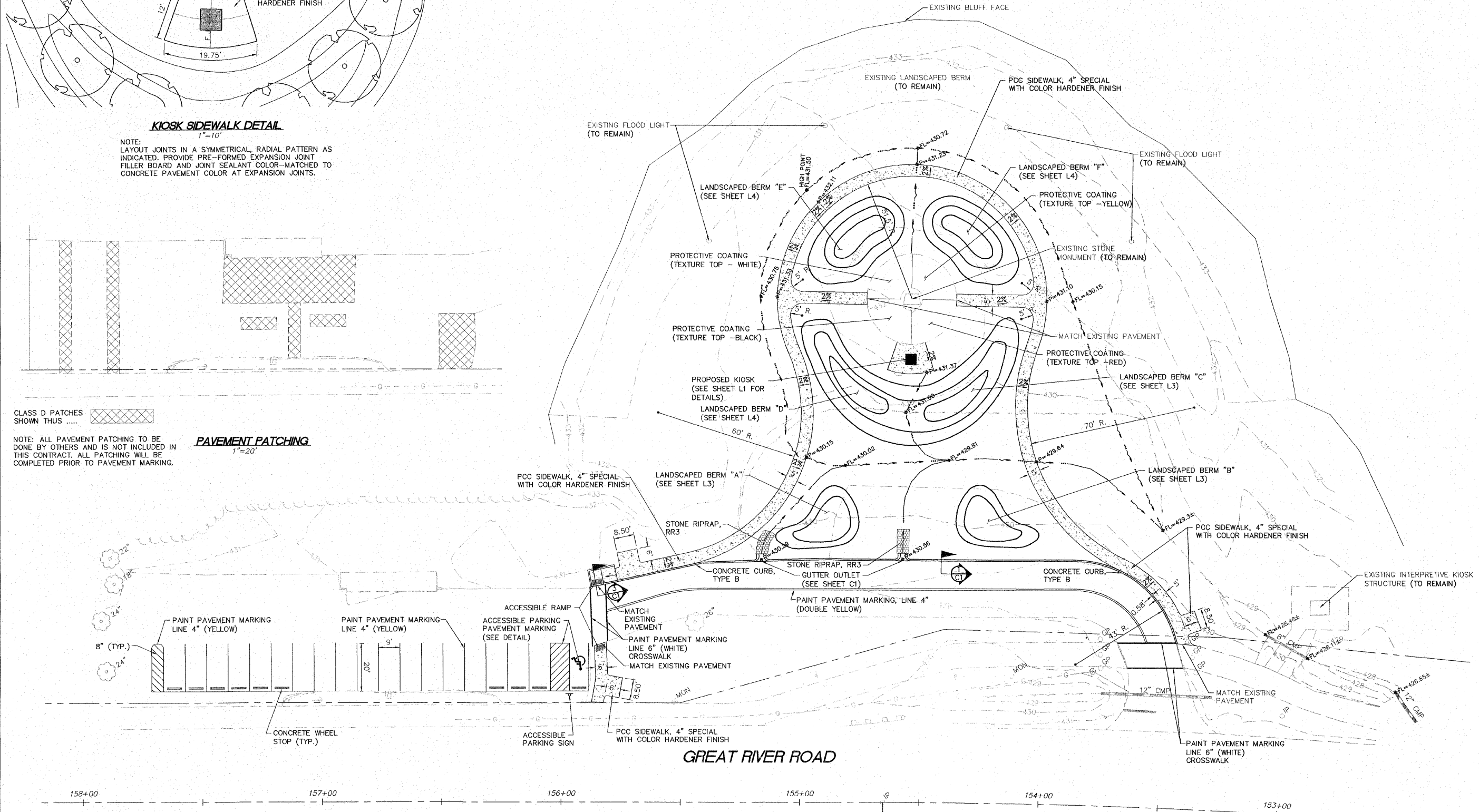
NOTE: LAYOUT JOINTS IN A SYMMETRICAL, RADIAL PATTERN AS INDICATED. PROVIDE PRE-FORMED EXPANSION JOINT FILLER BOARD AND JOINT SEALANT COLOR-MATCHED TO CONCRETE PAVEMENT COLOR AT EXPANSION JOINTS.



CLASS D PATCHES SHOWN THIS

**PAVEMENT PATCHING**  
 1"=20'

NOTE: ALL PAVEMENT PATCHING TO BE DONE BY OTHERS AND IS NOT INCLUDED IN THIS CONTRACT. ALL PATCHING WILL BE COMPLETED PRIOR TO PAVEMENT MARKING.



**GREAT RIVER ROAD**

S:\land\proje\08\GODFREY\_PAK (4/7/12)\HOFFMAN GARDENS\DWG\HOFFMAN PROPOSED SITE.DWG, 1/6/2012 2:56:25 PM, bspeters, 1/20