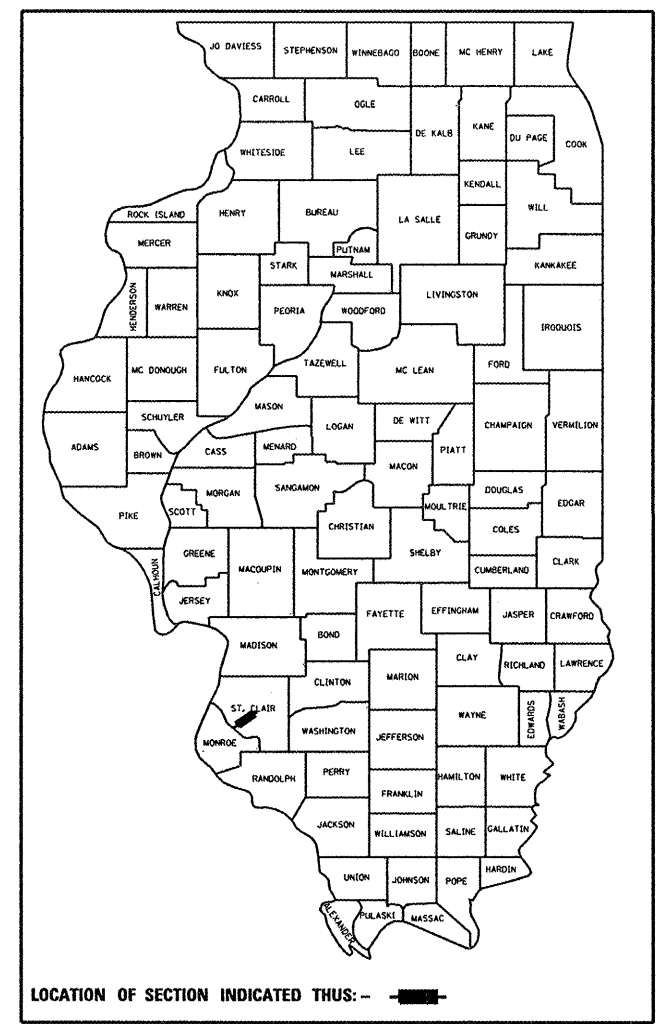


F.A.U. RTE.	SECTION	COUNTY	TOTAL SHEETS	SHEET NO.
9330	08-00211-00-PV	ST. CLAIR	85	1
FEDERAL AID PROJECT ILLINOIS		CONTRACT NO. 97480		

INDEX OF SHEETS	
SHEET NO.	ITEM
1	COVER SHEET
2	GENERAL NOTES
3	SUMMARY OF QUANTITIES
4-11	TYPICAL SECTIONS
12	SCHEDULES
13-20	PLAN & PROFILE
21-22	MAINTENANCE OF TRAFFIC
23-26	EROSION & SEDIMENT CONTROL PLANS
27-30	PAVEMENT MARKING & SIGNING PLANS
31-32	DETAILS
33-85	CROSS SECTIONS

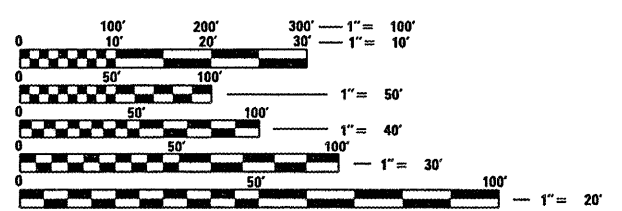
STATE OF ILLINOIS  
DEPARTMENT OF TRANSPORTATION  
DIVISION OF HIGHWAYS  
**PLANS FOR PROPOSED  
FEDERAL AID HIGHWAY**

CITY OF BELLEVILLE  
FAU ROUTE 9330  
SECTION 08-00211-00-PV  
PROJECT M-5011(320)  
FRANK SCOTT PARKWAY WEST RESURFACING  
ST. CLAIR COUNTY  
C-98-301-11



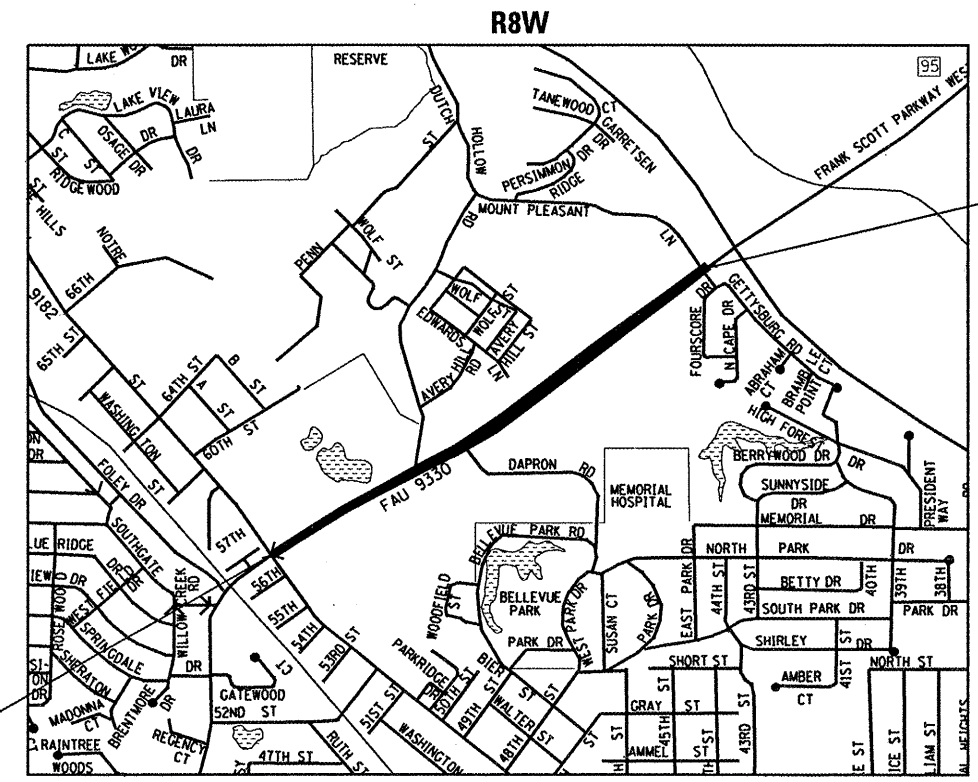
**STANDARDS**  
SEE GENERAL NOTES SHEET FOR  
IDOT HIGHWAY STANDARD LISTING

**DESIGN DESIGNATION**  
FRANK SCOTT PARKWAY WEST (FAU 9330): ARTERIAL  
ADT = 19,400



FULL SIZE PLANS HAVE BEEN PREPARED USING STANDARD ENGINEERING SCALES. REDUCED SIZED PLANS WILL NOT CONFORM TO STANDARD SCALES. IN MAKING MEASUREMENTS ON REDUCED PLANS, THE ABOVE SCALES MAY BE USED.

J.U.L.I.E.  
JOINT UTILITY LOCATION INFORMATION FOR EXCAVATION  
1-800-892-0123  
OR 811



BEGIN CONSTRUCTION  
STA 10+16.91  
FRANK SCOTT  
PARKWAY WEST

END CONSTRUCTION  
STA 57+94.76  
FRANK SCOTT  
PARKWAY WEST

LOCATION MAP  
SCALE: 1" = 800'

NET LENGTH = 4,777.85 FT. = 0.905 MILE

STATE OF ILLINOIS DEPARTMENT OF TRANSPORTATION	
APPROVED	11-2 20 11
	<i>Mark W. Eckert</i> CITY OF BELLEVILLE, MAYOR
PASSED	Nov 21 20 11
	<i>[Signature]</i> DISTRICT 8 PROJECT IMPLEMENTATION ENGINEER
RELEASING FOR BID BASED ON LIMITED REVIEW	Nov 21 20 11
	<i>Omer Osman</i> DEPUTY DIRECTOR OF HIGHWAYS, REGION 3 ENGINEER
<i>Stephanie Muentnich</i> 11/02/2011 STEPHANIE S. MUENTNICH, P.E. Date License Expires 11/30/2013	

CONTRACT NO. 97480



ILLINOIS  
Eastport Business Center 1  
100 Lanier Court, Suite 1  
Collinsville, IL 62234  
tel 618.345.2200  
fax 618.345.7233  
www.gatesassociates.com

MISSOURI  
Laclede Gas Building  
720 Olive, Suite 1600  
St. Louis, MO 63101  
tel 314.588.8361  
fax 314.588.9605

**PRINTED BY THE AUTHORITY  
OF THE STATE OF ILLINOIS**