

F.A. RTE.	SECTION	COUNTY	TOTAL SHEETS	SHEET NO.
	10-00064-00-BT	MADISON	18	1
FEDERAL AID PROJECT	ILLINOIS	CONTRACT NO. 97482		

STATE OF ILLINOIS
DEPARTMENT OF TRANSPORTATION
**PLANS FOR PROPOSED
IMPROVEMENT
CITY OF HIGHLAND
SPORTSMAN ROAD TRAIL CONSTRUCTION
SECTION 10-00064-00-BT
MADISON COUNTY
PROJECT TE-00D8 (836)
C-98-366-10**

INDEX OF SHEETS

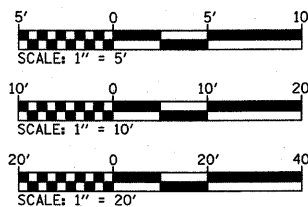
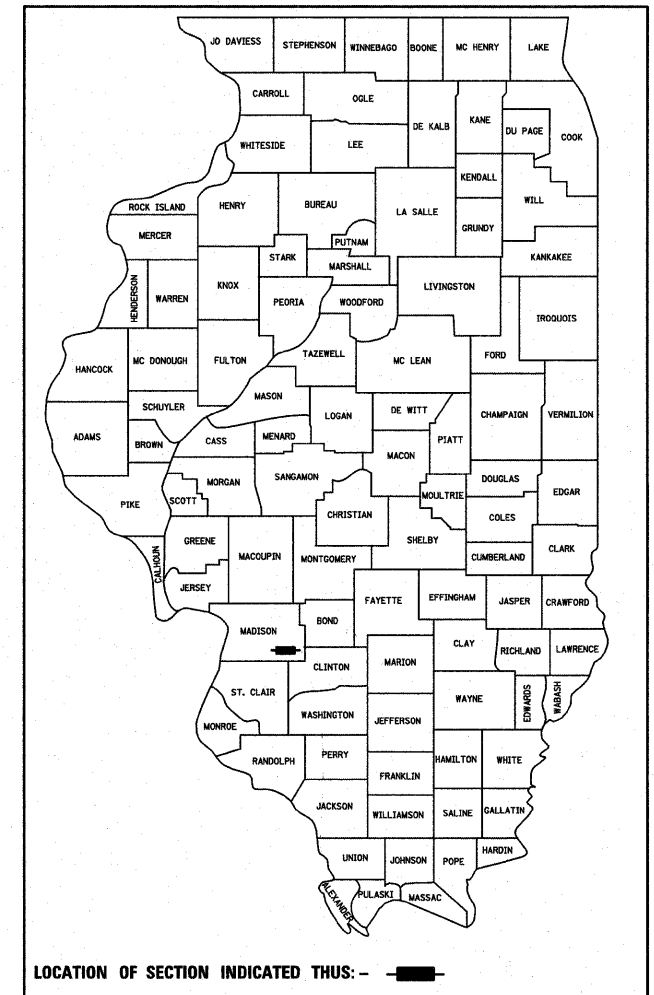
SHEET NO.	ITEM
1	COVER SHEET
2	GENERAL NOTES & SUMMARY OF QUANTITIES
3	TYPICAL SECTIONS
4	SCHEDULES
5-7	PLAN & PROFILE SHEETS
8-9	EROSION & SEDIMENT CONTROL SHEETS
10-11	PAVEMENT MARKING & SIGNING PLAN
12	WOOD FENCE DETAILS
13	CONSTRUCTION DETAILS
14-18	CROSS SECTIONS

HIGHWAY STANDARDS

000001-06	STANDARD SYMBOLS, ABBREVIATIONS AND PATTERNS
280001-06	TEMPORARY EROSION CONTROL SYSTEMS
542301-03	PRECAST REINFORCED CONCRETE FLARED END SECTION
701101-02	OFF-RD OPERATIONS, MULTILANE, 15' (4.5 m) TO 24' (600 mm) FROM PAVEMENT EDGE
701106-02	OFF-RD OPERATIONS, MULTILANE, MORE THAN 15' (4.5 m) AWAY
701901-02	TRAFFIC CONTROL DEVICES
720001-01	SIGN PANEL MOUNTING DETAILS
720006-03	SIGN PANEL ERECTION DETAILS
780001-03	TYPICAL PAVEMENT MARKINGS
BLR21-9	TYPICAL APPLICATION OF TRAFFIC CONTROL DEVICES FOR CONSTRUCTION ON RURAL LOCAL HIGHWAYS

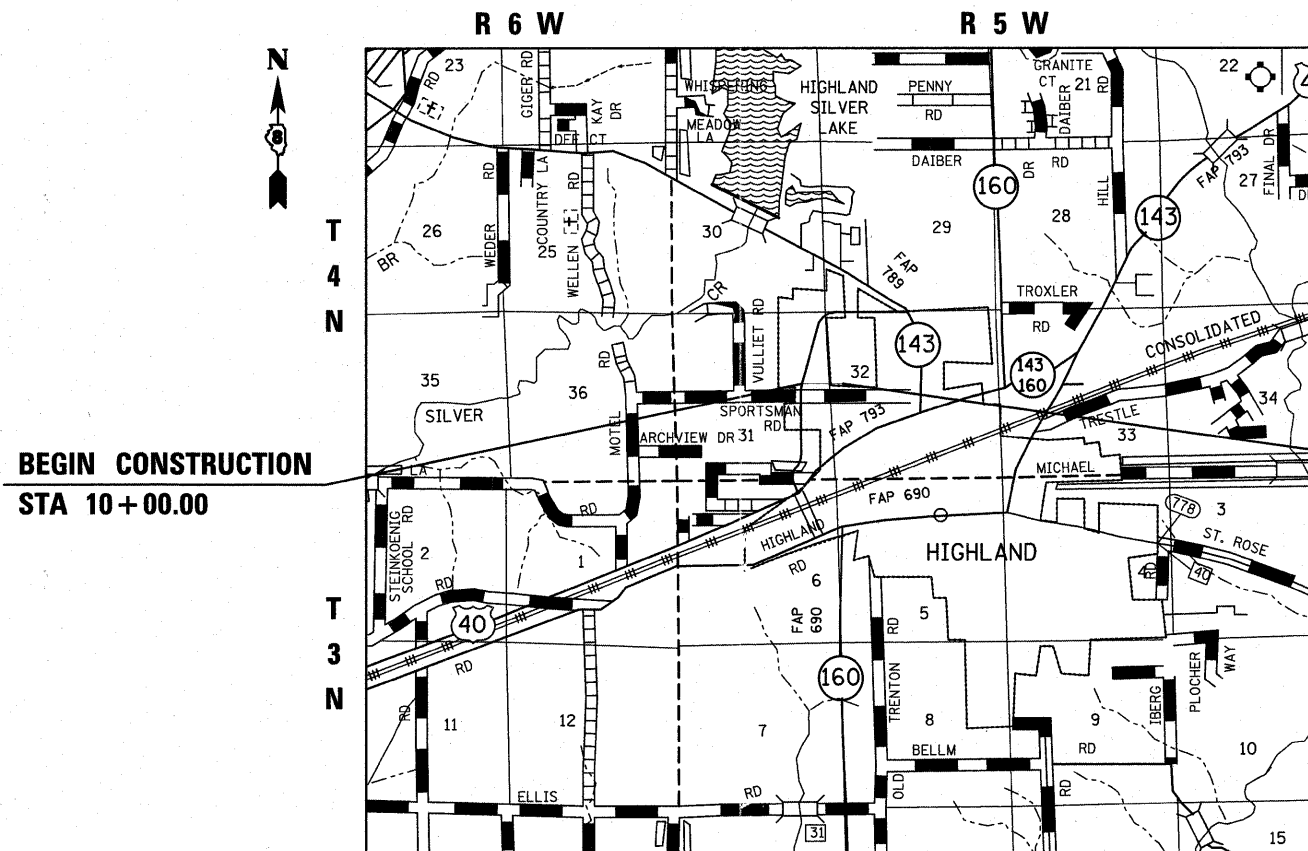
SCALE IN FEET

PLAN	1" = 20'
PROFILE HORIZ	1" = 20'
PROFILE VERT	1" = 5'
CROSS SECTION	1" = 10'



FULL SIZE PLANS HAVE BEEN PREPARED USING STANDARD ENGINEERING SCALES. REDUCED SIZED PLANS WILL NOT CONFORM TO STANDARD SCALES. IN MAKING MEASUREMENTS ON REDUCED PLANS, THE ABOVE SCALES MAY BE USED.

J.U.L.I.E.
JOINT UTILITY LOCATION INFORMATION FOR EXCAVATION
1-800-892-0123



BEGIN CONSTRUCTION
STA 10 + 00.00

END CONSTRUCTION
STA 24 + 75.35

LOCATION MAP
SCALE 1" = 5000'

GROSS LENGTH OF PROJECT = 1,475.35 FEET (0.279 MILES)

DESIGN DESIGNATION

CLASSIFICATION = SHARED-USE PATH
DESIGN SPEED = 20 MPH

PHILIP A. MURPHY
IL P.E. NO. 062-054536
EXPIRES: 11/30/2013

STATE OF ILLINOIS
DEPARTMENT OF TRANSPORTATION
DIVISION OF HIGHWAYS

APPROVED November 7 2011
Joseph R. Michaelis
JOSEPH R. MICHAELIS MAYOR OF HIGHLAND

PASSED Dec 20 2011
Jeffrey A. Call
DISTRICT 8 PROJECT IMPLEMENTATION ENGINEER

RELEASING FOR BID Dec 20 2011
BASED ON LIMITED REVIEW
Omer Osman
OMER OSMAN, P.E. DEPUTY DIRECTOR OF HIGHWAYS REGION FIVE ENGINEER



ILLINOIS
Eastport Business Center 1
100 Lanter Court, Suite 1
Collinsville, IL 62234
tel 618.345.2200
fax 618.345.7233

MISSOURI
Laclede Gas Building
720 Olive, Suite 1600
St. Louis, MO 63101
tel 314.588.8381
fax 314.588.9605

www.oatesassociates.com

**PRINTED BY THE AUTHORITY
OF THE STATE OF ILLINOIS**