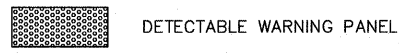
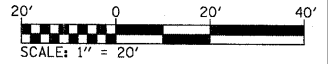


LEGEND



DETECTABLE WARNING PANEL

N/F SALLY S.E. RAEBER, BETTY RAEBER SCHMITT,
MARIE RAEBER SMILEY, AND OTHMAR L. RAEBER
02-18-31-00-000-009

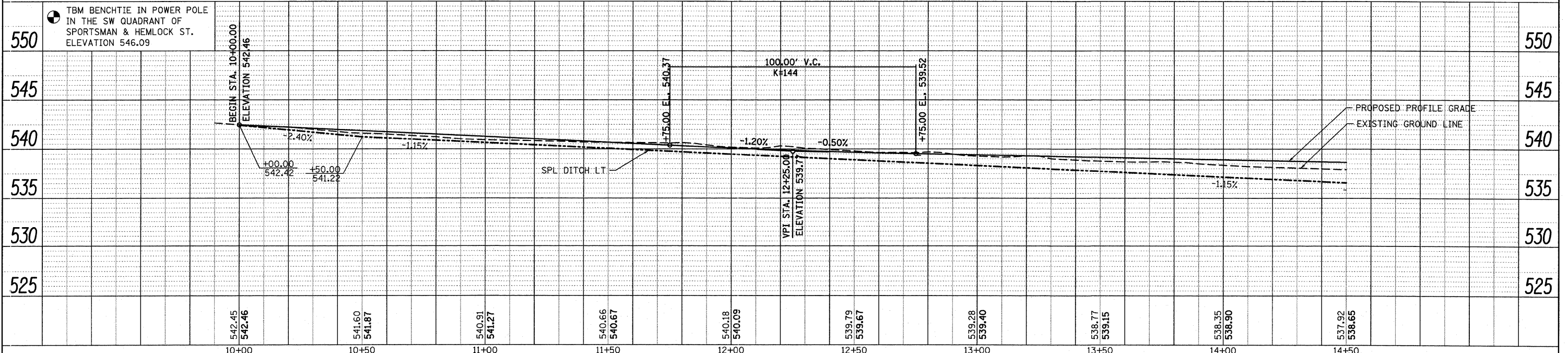
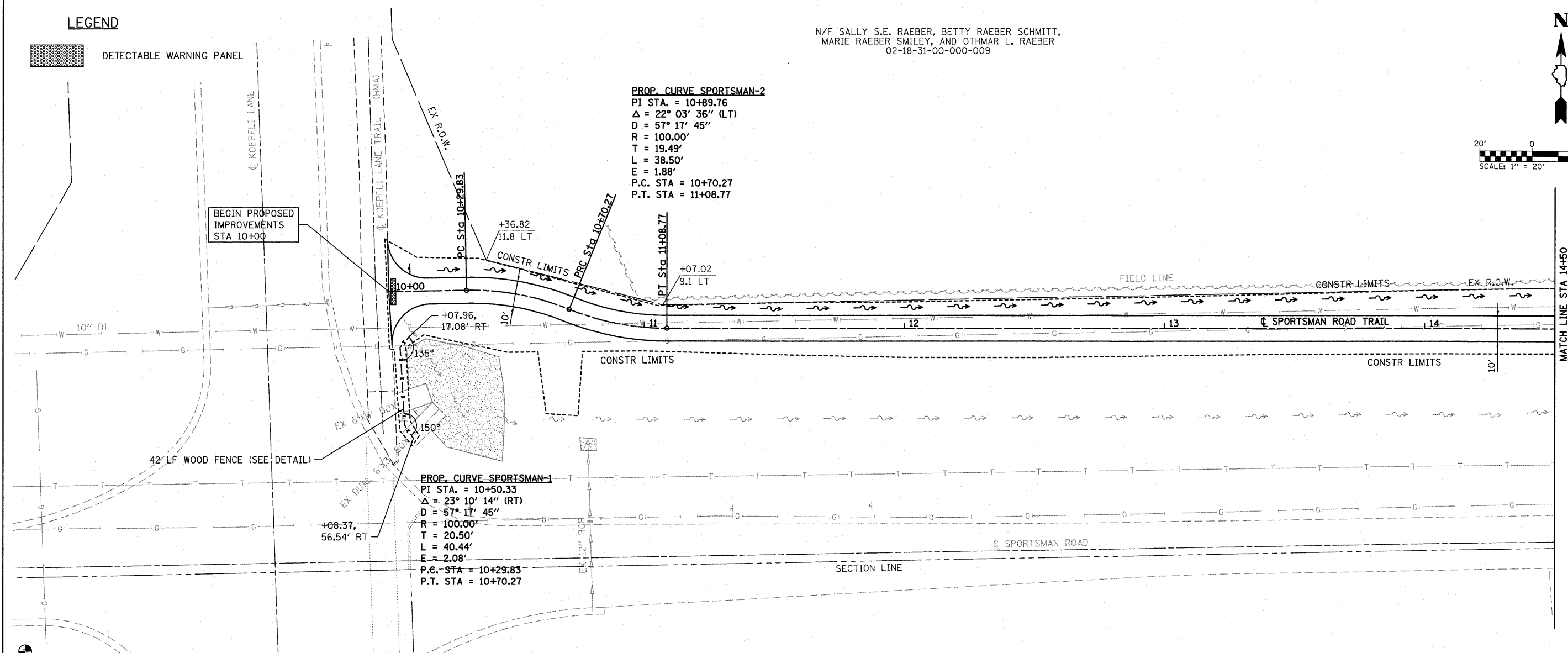


DATE	
BY	
REVIEWED	
PLANNED	
ALIGNED	
CHECKED	
NO. _____	

DATE	
BY	
REVIEWED	
PLANNED	
GRADES CHECKED	
NO. _____	

PROP. CURVE SPORTSMAN-2
PI STA. = 10+89.76
Δ = 22° 03' 36" (LT)
D = 57° 17' 45"
R = 100.00'
T = 19.49'
L = 38.50'
E = 1.88'
P.C. STA = 10+70.27
P.T. STA = 11+08.77

PROP. CURVE SPORTSMAN-1
PI STA. = 10+50.33
Δ = 23° 10' 14" (RT)
D = 57° 17' 45"
R = 100.00'
T = 20.50'
L = 40.44'
E = 2.08'
P.C. STA = 10+29.83
P.T. STA = 10+70.27



FILE NAME = D310096-ah-p1nprf.dgn	USER NAME = randy	DESIGNED -	REVISED -	STATE OF ILLINOIS DEPARTMENT OF TRANSPORTATION	PLAN & PROFILE SHEETS			F.A. RTE.	SECTION	COUNTY	TOTAL SHEETS	SHEET NO.
	PLOT TIME = 8:37:50 AM	DRAWN -	REVISED -		SCALE: 1" = 20'	SHEET NO. 1 OF 3 SHEETS	STA. 10+00 TO STA. 14+50	10-00064-00-BT	MADISON	18	5	
	PLOT SCALE = 28,000% / IN.	CHECKED -	REVISED -					SPORTSMAN ROAD TRAIL	CONTRACT NO. 97482			
	PLOT DATE = 11/10/2011	DATE -	REVISED -					ILLINOIS FED. AID PROJECT				