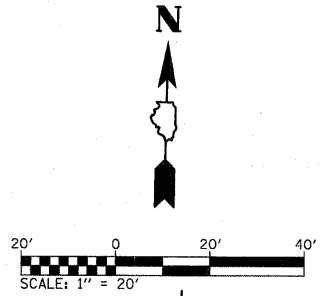


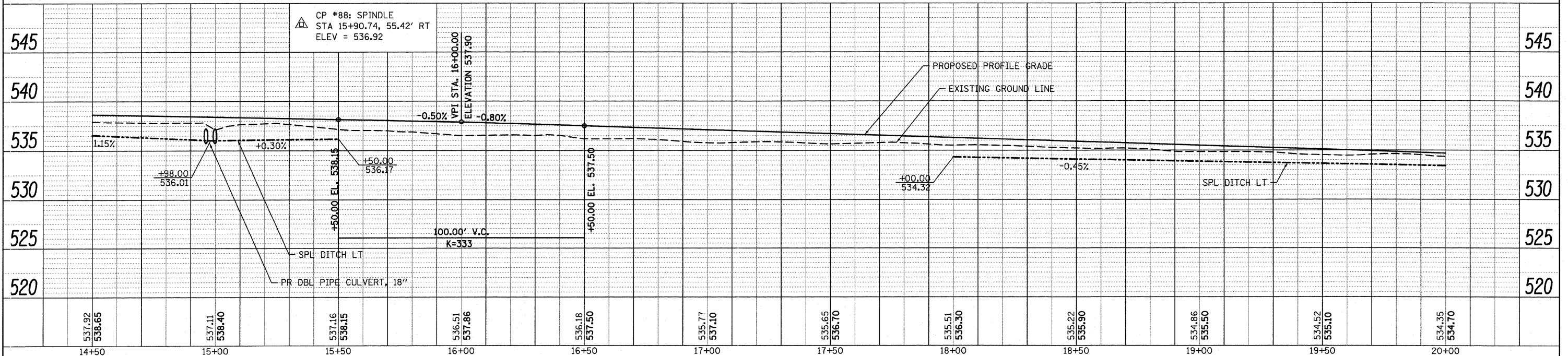
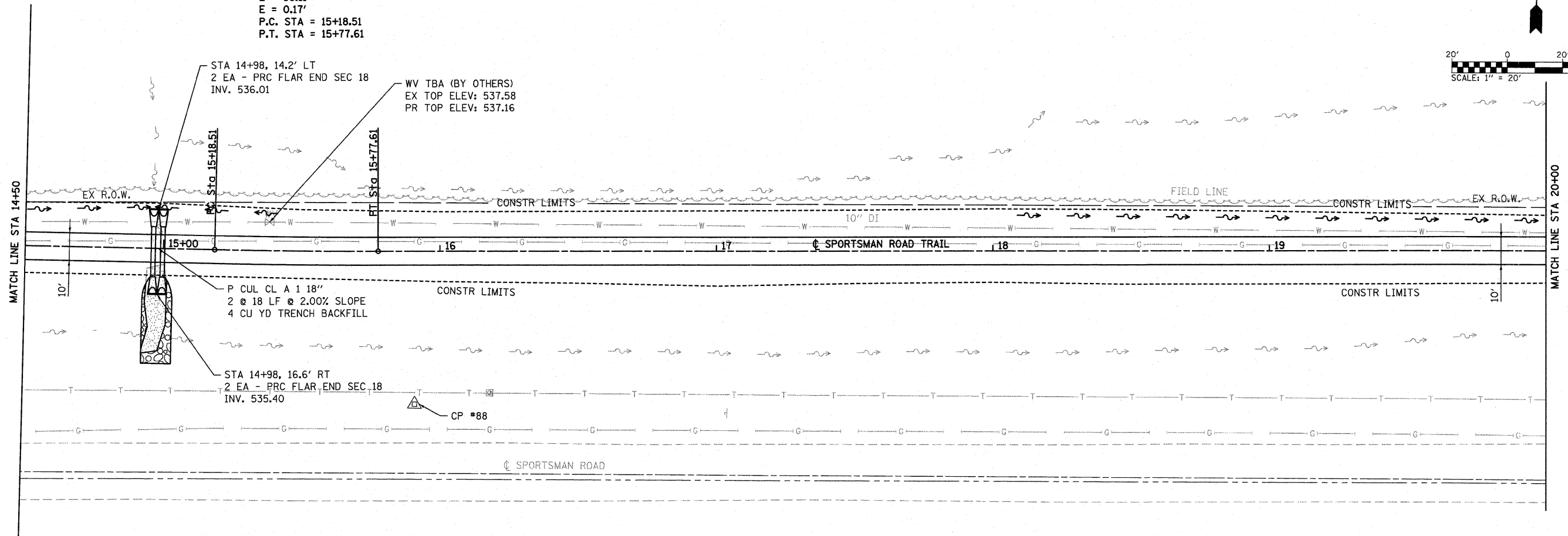
PROP. CURVE SPORTSMAN-3
 PI STA. = 15+48.06
 $\Delta = 1^\circ 21' 17''$ (LT)
 $D = 2^\circ 17' 31''$
 $R = 2,500.00'$
 $T = 29.55'$
 $L = 59.11'$
 $E = 0.17'$
 P.C. STA = 15+18.51
 P.T. STA = 15+77.61

N/F SALLY S.E. RAEER, BETTY RAEER SCHMITT,
 MARIE RAEER SMILEY, AND OTHMAR L. RAEER
 02-18-31-00-000-009



PLAN	DATE
BY	
REVISED	
NO. 1	
NO. 2	
NO. 3	
NO. 4	
NO. 5	
NO. 6	
NO. 7	
NO. 8	
NO. 9	
NO. 10	

PROFILE	DATE
BY	
REVISED	
NO. 1	
NO. 2	
NO. 3	
NO. 4	
NO. 5	
NO. 6	
NO. 7	
NO. 8	
NO. 9	
NO. 10	



FILE NAME = D310096-ah-p1nprf.dgn	USER NAME = randy	DESIGNED -	REVISED -	STATE OF ILLINOIS DEPARTMENT OF TRANSPORTATION	PLAN & PROFILE SHEETS				F.A. RTE.	SECTION	COUNTY	TOTAL SHEETS	SHEET NO.
	PLOT TIME = 8:37:51 AM	DRAWN -	REVISED -		SCALE: 1" = 20'	SHEET NO. 2 OF 3 SHEETS	STA. 14+50	TO STA. 20+00	10-00064-00-BT	MADISON	18	6	
	PLOT SCALE = 20.0000' / IN.	CHECKED -	REVISED -		SPORTSMAN ROAD TRAIL CONTRACT NO. 97482								
	PLOT DATE = 11/10/2011	DATE -	REVISED -		ILLINOIS FED. AID PROJECT								