

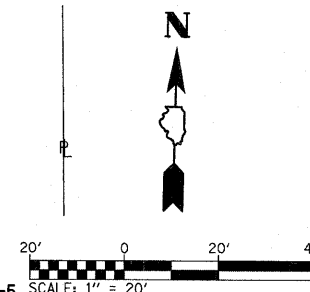


LEGEND

-  BIKE PATH REMOVAL
-  DETECTABLE WARNING PANEL

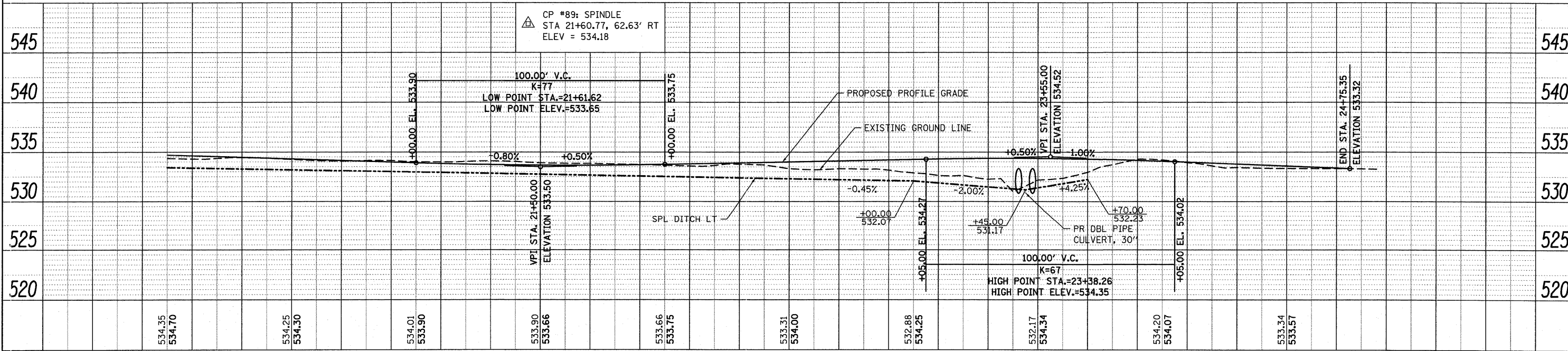
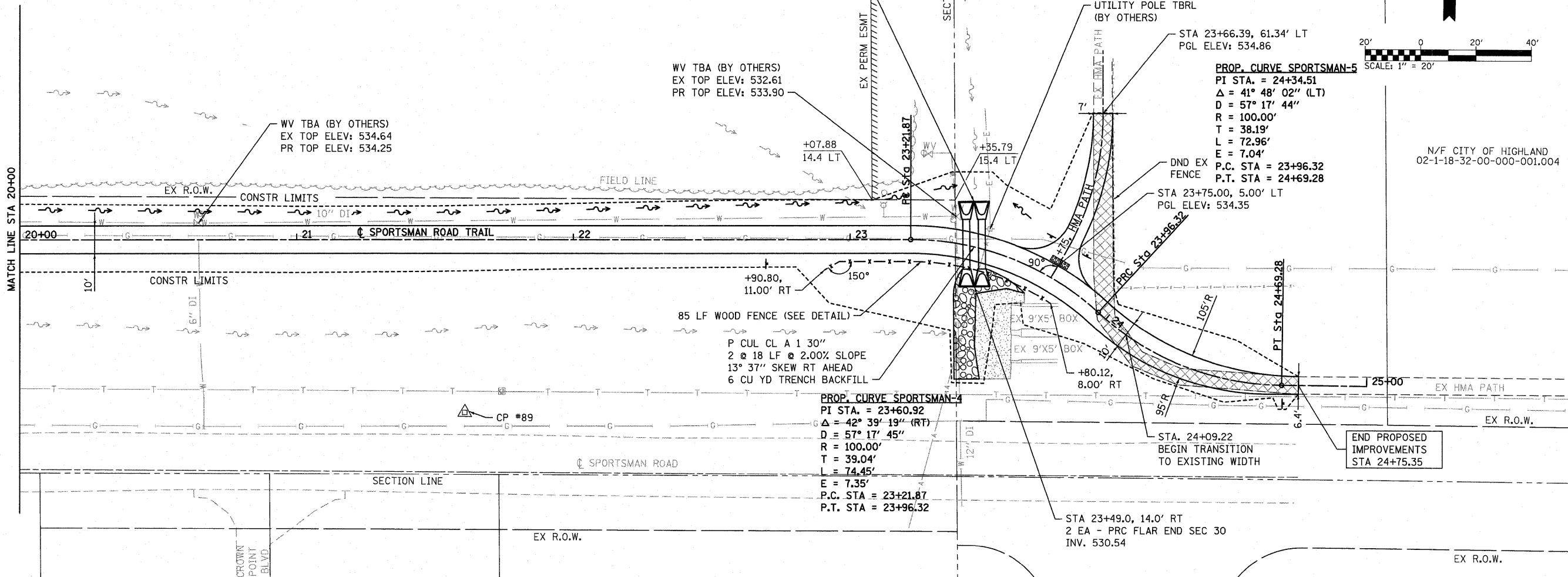
N/F SALLY S.E. RAEBER, BETTY RAEBER SCHMITT,
MARIE RAEBER SMILEY, AND OTHMAR L. RAEBER
02-18-31-00-000-009

N/F CITY OF HIGHLAND
02-1-18-32-00-000-001.006



DATE	
BY	
NOTED	
CHECKED	
NO.	

DATE	
BY	
NOTED	
CHECKED	
NO.	



FILE NAME = D:\10096-ah-p\prpf.dgn	USER NAME = randy	DESIGNED -	REVISED -	STATE OF ILLINOIS DEPARTMENT OF TRANSPORTATION	PLAN & PROFILE SHEETS			F.A. RTE.	SECTION	COUNTY	TOTAL SHEETS	SHEET NO.
	PLOT TIME = 8:37:52 AM	DRAWN -	REVISED -		SCALE: 1" = 20'	SHEET NO. 3 OF 3 SHEETS	STA. 20+00 TO STA. 24+75.35	10-00064-00-BT	MADISON	18	7	
	PLOT SCALE = 28,0000' / IN.	CHECKED -	REVISED -					SPORTSMAN ROAD TRAIL				CONTRACT NO. 97482
	PLOT DATE = 11/18/2011	DATE -	REVISED -									ILLINOIS FED. AID PROJECT