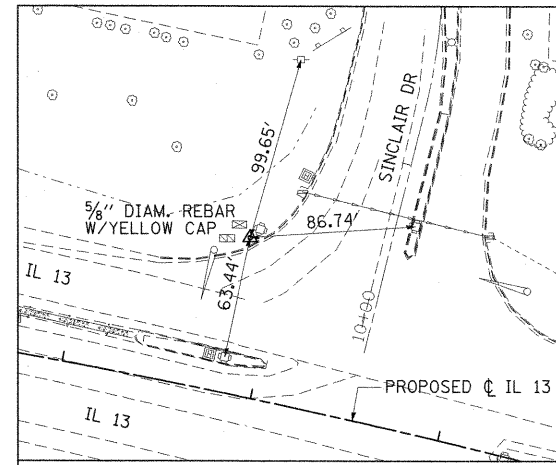
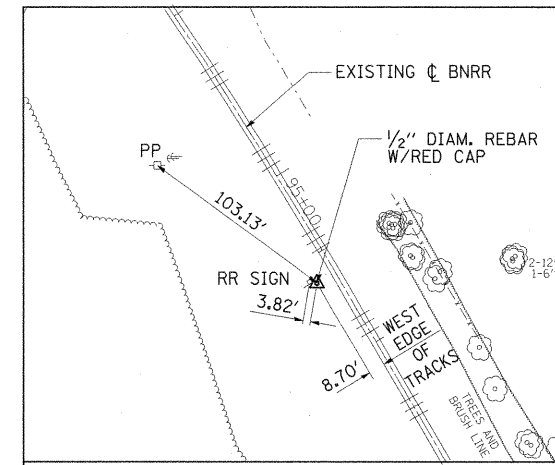


CONTROL POINT #WP205
 STA. 1734+90.51, 63.86' RT. (IL 13)
 N=393199.670 E=796020.652
 ELEV=439.42



CONTROL POINT #WP203
 STA. 1761+83.19, 81.05' LT. (IL 13)
 N=393164.728 E=798722.176
 ELEV=449.00



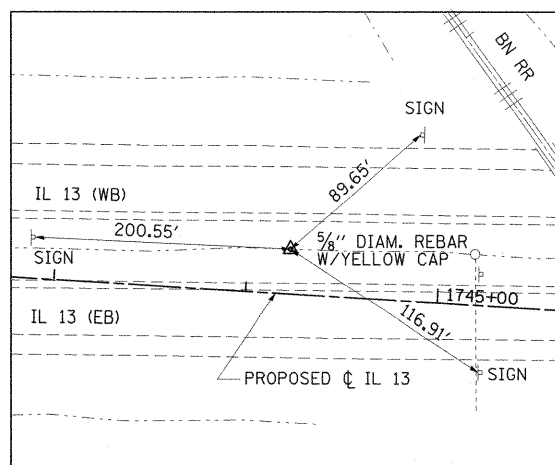
CONTROL POINT #303
 STA. 473+93.61, 138.05' LT. (FRONTAGE RD)
 N=392813.739 E=797404.061
 ELEV=444.69

BENCHMARK LOCATIONS

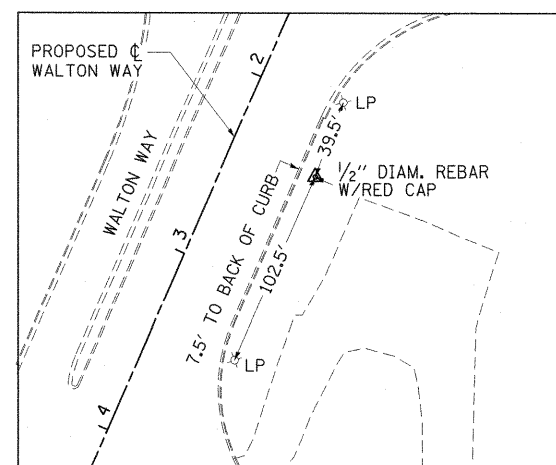
BM "18"
 STA. 1735+10.91+/-, 72.25'+/- RT. (IL ROUTE 13)
 CUT SQUARE ON THE EAST CORNER OF A TRAFFIC SIGNAL HANDHOLE RIM IN
 THE S/W QUAD OF RTE 13 AND SKYLINE DRIVE, 37' RIGHT OF THE CENTERLINE
 OF RTE 13 EBL
 ELEVATION = 439.10

BM "19"
 STA. 1763+29.58+/-, 53.73'+/- RT. (IL ROUTE 13)
 CUT SQUARE IN THE CONCRETE FDN OF A COMBINATION MAST ARM ASSEMBLY S/E
 QUAD OF IL RTE 13 EBL AND SINCLAIR DR. 20' SOUTH OF THE CENTERLINE OF
 RTE 13 EBL
 ELEVATION = 448.33

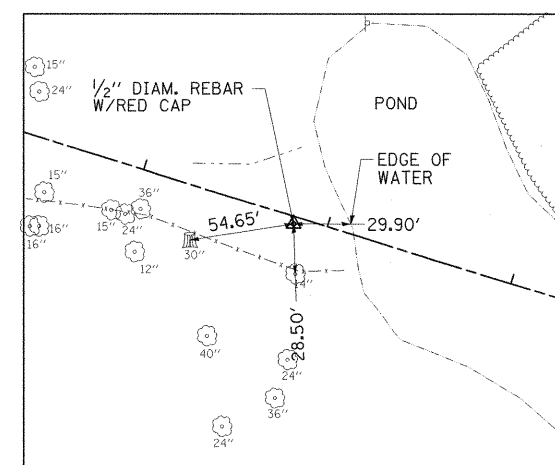
BM "9706"
 STA. 1777+60.53+/-, 133.65'+/- RT. (IL ROUTE 13)
 IP&C S/E QUAD OF IL RTE 13 EBL AND WALTON WAY 35' EAST OF THE
 CENTERLINE OF WALTON WAY
 ELEVATION = 443.59



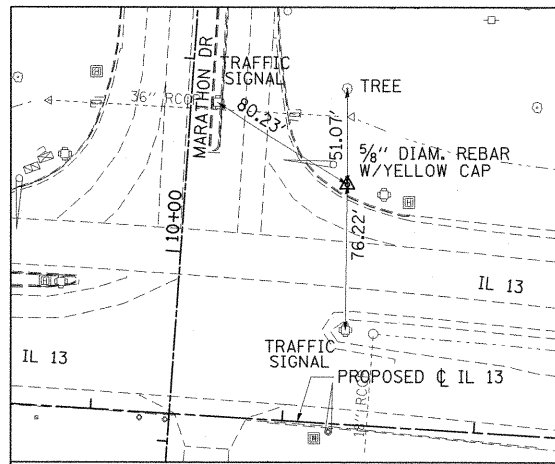
CONTROL POINT #9704
 STA. 1744+22.13, 23.42' LT. (IL 13)
 N=393254.999 E=796953.687
 ELEV=446.21



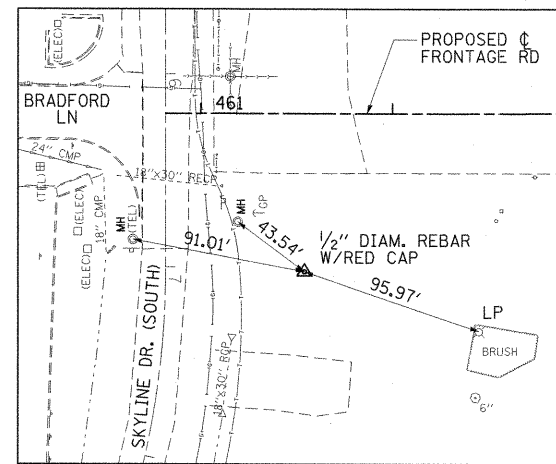
CONTROL POINT #310
 STA. 2+36.04, 46.54' LT. (WALTON WAY)
 N=392370.694 E=800066.318
 ELEV=442.22



CONTROL POINT #307
 STA. 492+82.63, 3.79' RT. (FRONTAGE RD)
 N=392433.815 E=799264.092
 ELEV=435.86



CONTROL POINT #WP204
 STA. 1753+26.14, 125.65' LT. (IL 13)
 N=393301.347 E=797862.271
 ELEV=447.27



CONTROL POINT #300
 STA. 461+54.04, 82.12' RT. (FRONTAGE RD)
 N=392592.410 E=796164.697
 ELEV=436.50

FILE NAME =	USER NAME = Gary Davis	DESIGNED - BMB	REVISED -
I:\dot\0906003\draw\cadd\sheet\099885\sh-t-ATB-002.dgn		DRAWN - RAH	REVISED -
	PLOT SCALE = 50.0000' / IN.	CHECKED - SPH	REVISED -
	PLOT DATE = 12/7/2011	DATE - 12/9/11	REVISED -

**STATE OF ILLINOIS
 DEPARTMENT OF TRANSPORTATION**

**ALIGNMENT, TIES AND BENCHMARKS
 ILLINOIS ROUTE 13**

SCALE: SHEET NO. OF SHEETS STA. TO STA.

F.A. RTE.	SECTION	COUNTY	TOTAL SHEETS	SHEET NO.
331	(1X-1) VB-1, B-1, N-4, R-3	WILLIAMSON	367	52
CONTRACT NO. 98859				
ILLINOIS FED. AID PROJECT				