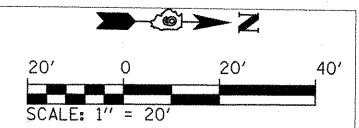


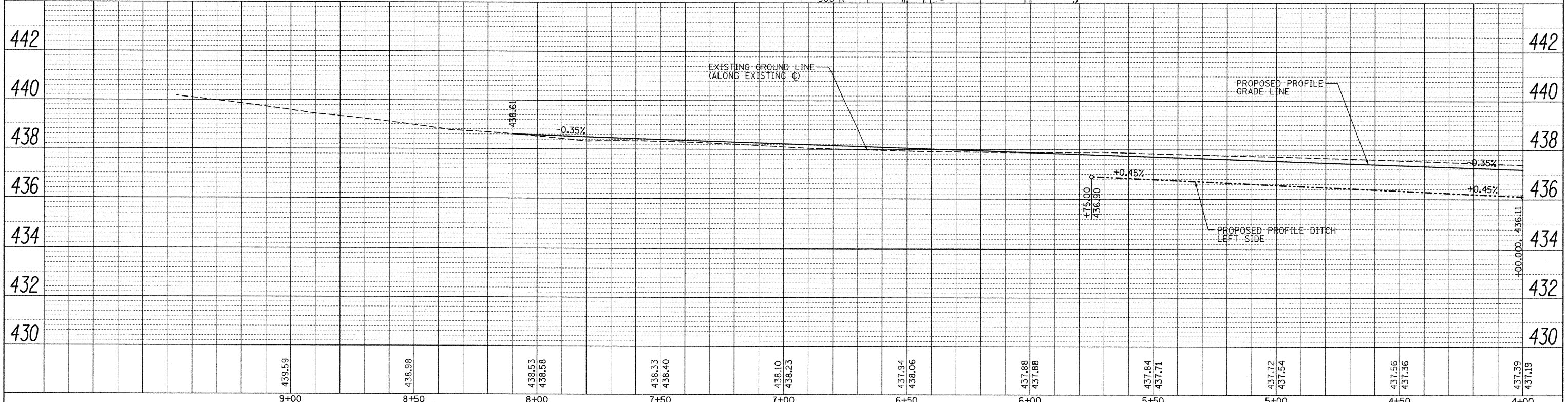
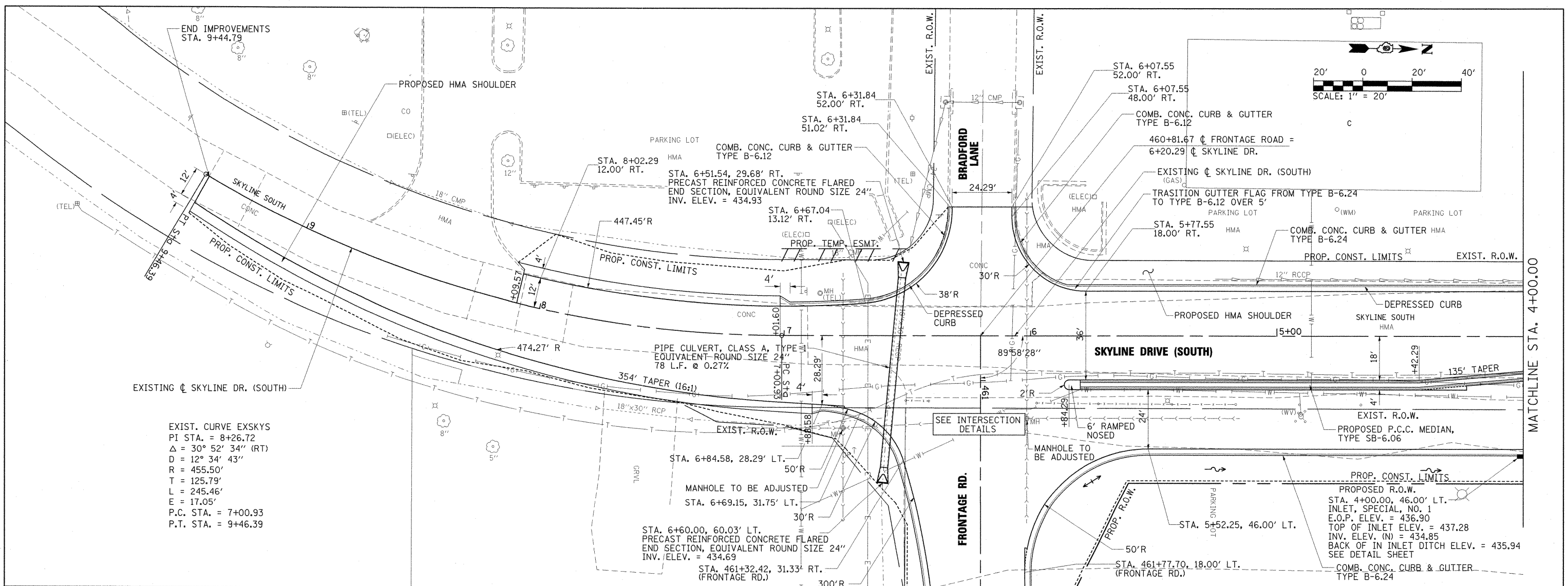
PLAN	SURVEYED	BY	DATE
	ALIGNED		
	CHECKED		
	RT. OF WAY		
	CHECKED		
	NO.		
	CADD FILE NAME		

PROFILE	SURVEYED	BY	DATE
	GRADES		
	CHECKED		
	BL. NOTED		
	STRUCTURE		
	NOTATIONS		
	CHKD		

END IMPROVEMENTS  
STA. 9+44.79



EXIST. CURVE EXSKYS  
PI STA. = 8+26.72  
Δ = 30° 52' 34" (RT)  
D = 12° 34' 43"  
R = 455.50'  
T = 125.79'  
L = 245.46'  
E = 17.05'  
P.C. STA. = 7+00.93  
P.T. STA. = 9+46.39



FILE NAME =	USER NAME = OpenH&B Springfield	DESIGNED - BB	REVISED -																	
I:\dot\0908603\draw\CADD_Sheets\0908603\014-Skyline.dgn	ht-plnprf-014-Skyline.dgn	DRAWN - RH & SH	REVISED -																	
		CHECKED - KPF & SPH	REVISED -																	
		DATE - 12/9/11	REVISED -																	

**STATE OF ILLINOIS**  
**DEPARTMENT OF TRANSPORTATION**

**PLAN AND PROFILE**  
**SKYLINE DRIVE**

SCALE: 1"=20'    SHEET NO. OF SHEETS    STA. 9+00.00 TO STA. 4+00.00

F.A. RTE.	SECTION	COUNTY	TOTAL SHEETS	SHEET NO.
331	(1X-1) VB-1, B-1, N-4, R-3	WILLIAMSON	367	59
CONTRACT NO. 98859				
ILLINOIS FED. AID PROJECT				