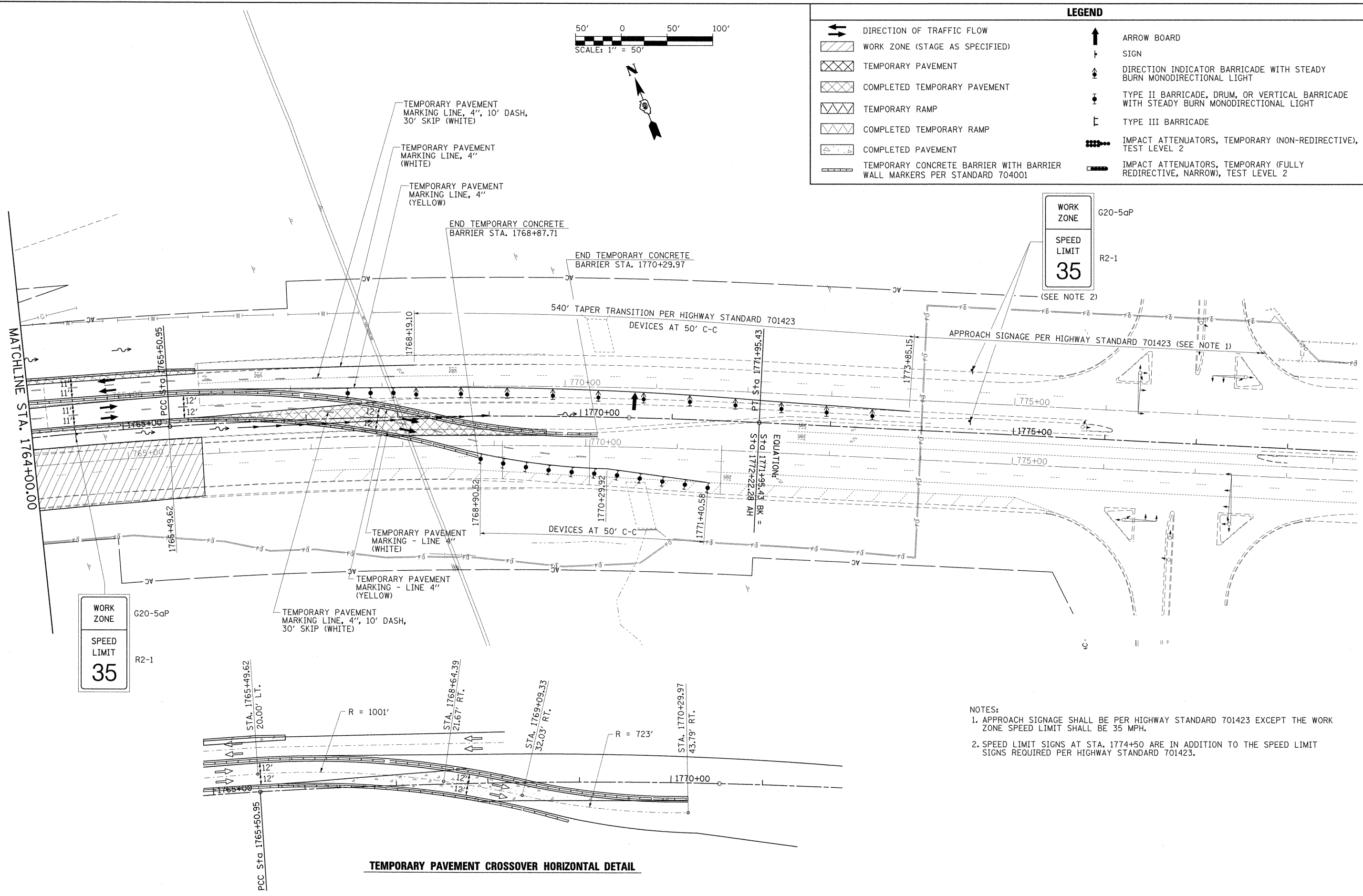


LEGEND

- DIRECTION OF TRAFFIC FLOW
- WORK ZONE (STAGE AS SPECIFIED)
- TEMPORARY PAVEMENT
- COMPLETED TEMPORARY PAVEMENT
- TEMPORARY RAMP
- COMPLETED TEMPORARY RAMP
- COMPLETED PAVEMENT
- TEMPORARY CONCRETE BARRIER WITH BARRIER WALL MARKERS PER STANDARD 704001
- ARROW BOARD
- SIGN
- DIRECTION INDICATOR BARRICADE WITH STEADY BURN MONODIRECTIONAL LIGHT
- TYPE II BARRICADE, DRUM, OR VERTICAL BARRICADE WITH STEADY BURN MONODIRECTIONAL LIGHT
- TYPE III BARRICADE
- IMPACT ATTENUATORS, TEMPORARY (NON-REDIRECTIVE), TEST LEVEL 2
- IMPACT ATTENUATORS, TEMPORARY (FULLY REDIRECTIVE, NARROW), TEST LEVEL 2



- NOTES:
1. APPROACH SIGNAGE SHALL BE PER HIGHWAY STANDARD 701423 EXCEPT THE WORK ZONE SPEED LIMIT SHALL BE 35 MPH.
 2. SPEED LIMIT SIGNS AT STA. 1774+50 ARE IN ADDITION TO THE SPEED LIMIT SIGNS REQUIRED PER HIGHWAY STANDARD 701423.

TEMPORARY PAVEMENT CROSSOVER HORIZONTAL DETAIL

FILE NAME =	USER NAME = OpenH&B Springfield	DESIGNED - KPF	REVISED -	STATE OF ILLINOIS DEPARTMENT OF TRANSPORTATION	MAINTENANCE OF TRAFFIC PLAN STAGE 1B	SCALE: 1"=50'	SHEET NO. OF SHEETS	STA. 1764+00.00 TO STA.	F.A. RTE.	SECTION	COUNTY	TOTAL SHEETS	SHEET NO.	
1:\dot\0906603\draw\CAOD_Sheets\099885	sht-mot-stage1b-6.dgn	DRAWN - TAP	REVISED -			331	(1X-1) VB-1, B-1, N-4, R-3	WILLIAMSON	367	76				
PLOT SCALE = 50.0000' / IN.		CHECKED - SPH	REVISED -			CONTRACT NO. 98859		ILLINOIS FED. AID PROJECT						
PLOT DATE = 12/14/2011		DATE - 12/9/11	REVISED -											