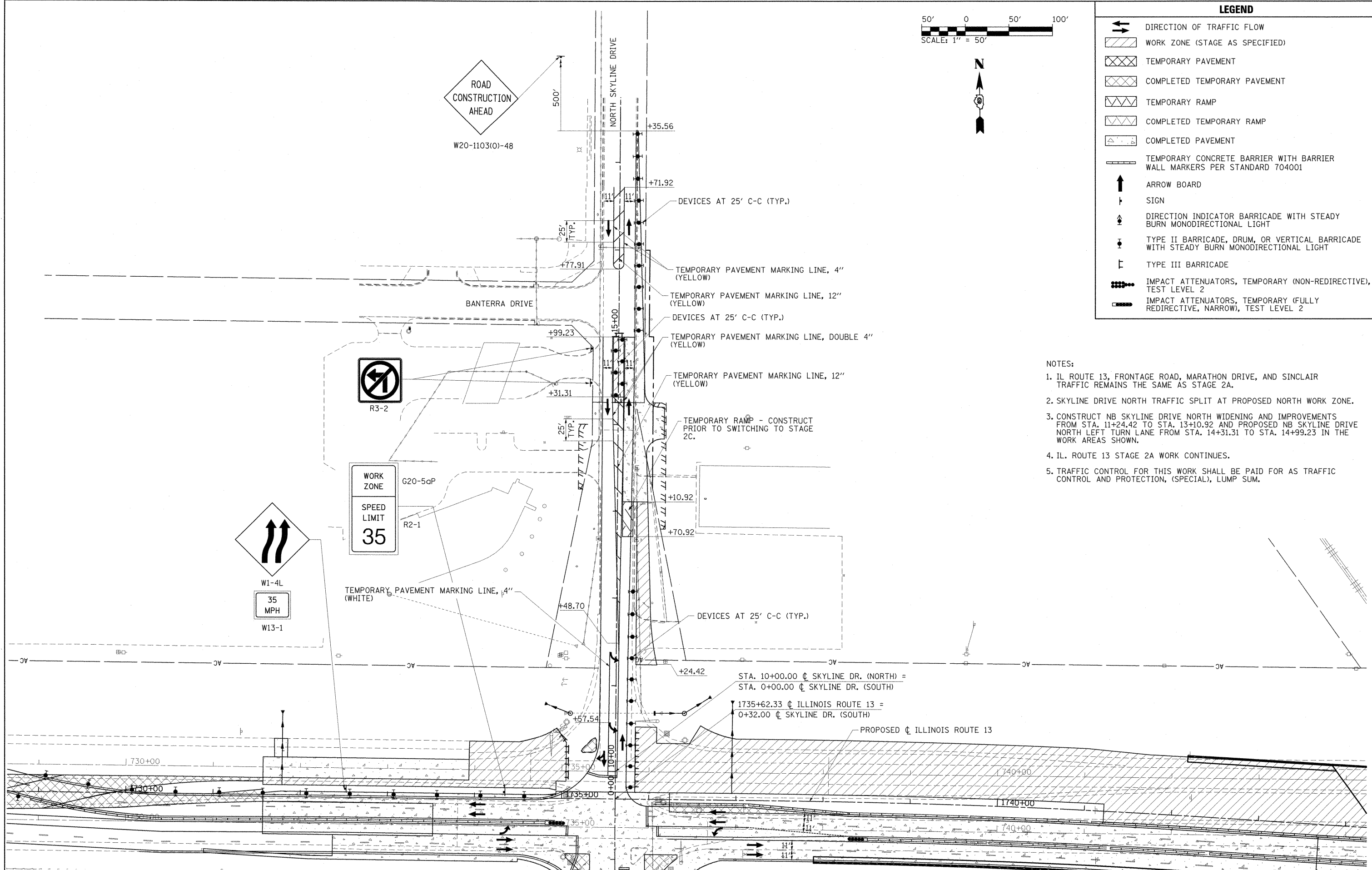


**LEGEND**

- DIRECTION OF TRAFFIC FLOW
- WORK ZONE (STAGE AS SPECIFIED)
- TEMPORARY PAVEMENT
- COMPLETED TEMPORARY PAVEMENT
- TEMPORARY RAMP
- COMPLETED TEMPORARY RAMP
- COMPLETED PAVEMENT
- TEMPORARY CONCRETE BARRIER WITH BARRIER WALL MARKERS PER STANDARD 704001
- ARROW BOARD
- SIGN
- DIRECTION INDICATOR BARRICADE WITH STEADY BURN MONODIRECTIONAL LIGHT
- TYPE II BARRICADE, DRUM, OR VERTICAL BARRICADE WITH STEADY BURN MONODIRECTIONAL LIGHT
- TYPE III BARRICADE
- IMPACT ATTENUATORS, TEMPORARY (NON-REDIRECTIVE), TEST LEVEL 2
- IMPACT ATTENUATORS, TEMPORARY (FULLY REDIRECTIVE, NARROW), TEST LEVEL 2

**NOTES:**

1. IL ROUTE 13, FRONTAGE ROAD, MARATHON DRIVE, AND SINCLAIR TRAFFIC REMAINS THE SAME AS STAGE 2A.
2. SKYLINE DRIVE NORTH TRAFFIC SPLIT AT PROPOSED NORTH WORK ZONE.
3. CONSTRUCT NB SKYLINE DRIVE NORTH WIDENING AND IMPROVEMENTS FROM STA. 11+24.42 TO STA. 13+10.92 AND PROPOSED NB SKYLINE DRIVE NORTH LEFT TURN LANE FROM STA. 14+31.31 TO STA. 14+99.23 IN THE WORK AREAS SHOWN.
4. IL. ROUTE 13 STAGE 2A WORK CONTINUES.
5. TRAFFIC CONTROL FOR THIS WORK SHALL BE PAID FOR AS TRAFFIC CONTROL AND PROTECTION, (SPECIAL), LUMP SUM.



FILE NAME =	USER NAME = OpenH&B Springfield	DESIGNED - KPF	REVISED -	<b>STATE OF ILLINOIS DEPARTMENT OF TRANSPORTATION</b>	<b>MAINTENANCE OF TRAFFIC PLAN STAGE 2C</b>	F.A. RTE. 331	SECTION (1X-1) VB-1, B-1, N-4, R-3	COUNTY WILLIAMSON	TOTAL SHEETS 367	SHEET NO. 89	
		DRAWN - TAP	REVISED -								
		CHECKED - SPH	REVISED -								
		DATE - 12/9/11	REVISED -								
PLOT SCALE = 50,0000 "/> <td colspan="2">PLOT DATE = 12/14/2011</td> <td colspan="2" style="text-align: center;">SCALE: 1"=50'</td> <td colspan="2" style="text-align: center;">SHEET NO. OF SHEETS</td> <td colspan="2" style="text-align: center;">STA. TO STA.</td> <td style="text-align: center;">CONTRACT NO. 98859</td>		PLOT DATE = 12/14/2011		SCALE: 1"=50'		SHEET NO. OF SHEETS		STA. TO STA.		CONTRACT NO. 98859	

ILLINOIS FED. AID PROJECT