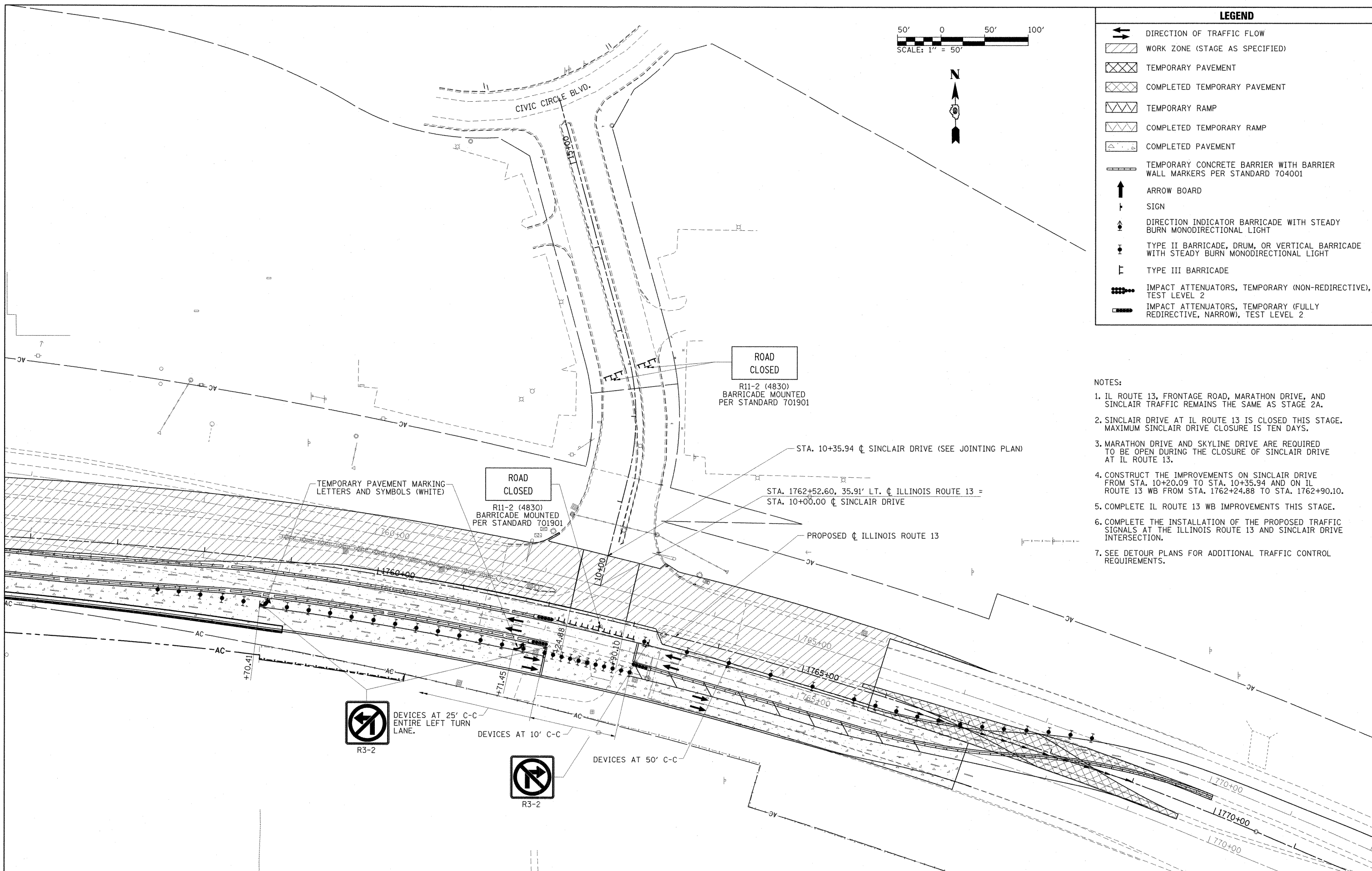


LEGEND

- DIRECTION OF TRAFFIC FLOW
- WORK ZONE (STAGE AS SPECIFIED)
- TEMPORARY PAVEMENT
- COMPLETED TEMPORARY PAVEMENT
- TEMPORARY RAMP
- COMPLETED TEMPORARY RAMP
- COMPLETED PAVEMENT
- TEMPORARY CONCRETE BARRIER WITH BARRIER WALL MARKERS PER STANDARD 704001
- ARROW BOARD
- SIGN
- DIRECTION INDICATOR BARRICADE WITH STEADY BURN MONODIRECTIONAL LIGHT
- TYPE II BARRICADE, DRUM, OR VERTICAL BARRICADE WITH STEADY BURN MONODIRECTIONAL LIGHT
- TYPE III BARRICADE
- IMPACT ATTENUATORS, TEMPORARY (NON-REDIRECTIVE), TEST LEVEL 2
- IMPACT ATTENUATORS, TEMPORARY (FULLY REDIRECTIVE, NARROW), TEST LEVEL 2



- NOTES:**
1. IL ROUTE 13, FRONTAGE ROAD, MARATHON DRIVE, AND SINCLAIR TRAFFIC REMAINS THE SAME AS STAGE 2A.
 2. SINCLAIR DRIVE AT IL ROUTE 13 IS CLOSED THIS STAGE. MAXIMUM SINCLAIR DRIVE CLOSURE IS TEN DAYS.
 3. MARATHON DRIVE AND SKYLINE DRIVE ARE REQUIRED TO BE OPEN DURING THE CLOSURE OF SINCLAIR DRIVE AT IL ROUTE 13.
 4. CONSTRUCT THE IMPROVEMENTS ON SINCLAIR DRIVE FROM STA. 10+20.09 TO STA. 10+35.94 AND ON IL ROUTE 13 WB FROM STA. 1762+24.88 TO STA. 1762+90.10.
 5. COMPLETE IL ROUTE 13 WB IMPROVEMENTS THIS STAGE.
 6. COMPLETE THE INSTALLATION OF THE PROPOSED TRAFFIC SIGNALS AT THE ILLINOIS ROUTE 13 AND SINCLAIR DRIVE INTERSECTION.
 7. SEE DETOUR PLANS FOR ADDITIONAL TRAFFIC CONTROL REQUIREMENTS.

FILE NAME =	USER NAME = OpenH&B Springfield	DESIGNED - KPF	REVISED -	STATE OF ILLINOIS DEPARTMENT OF TRANSPORTATION	MAINTENANCE OF TRAFFIC PLAN STAGE 2G			F.A. RTE.	SECTION	COUNTY	TOTAL SHEETS	SHEET NO.
1:\dot\0906603\draw\CADD.Sheets\099885	2-sht-mot-stage2g-2.dgn	DRAWN - TAP	REVISED -		331	(1X-1) VB-1, B-1, N-4, R-3	WILLIAMSON	367	93			
PLOT SCALE = 50.0000 "/td> <td>DATE - 12/9/11</td> <td>CHECKED - SPH</td> <td>REVISED -</td> <td colspan="3" style="text-align: center;">SCALE: 1"=50'</td> <td colspan="2" style="text-align: center;">CONTRACT NO. 98859</td>	DATE - 12/9/11	CHECKED - SPH	REVISED -		SCALE: 1"=50'			CONTRACT NO. 98859				
PLOT DATE = 12/14/2011		DATE - 12/9/11	REVISED -		SHEET NO. OF SHEETS STA. TO STA.			ILLINOIS FED. AID PROJECT				