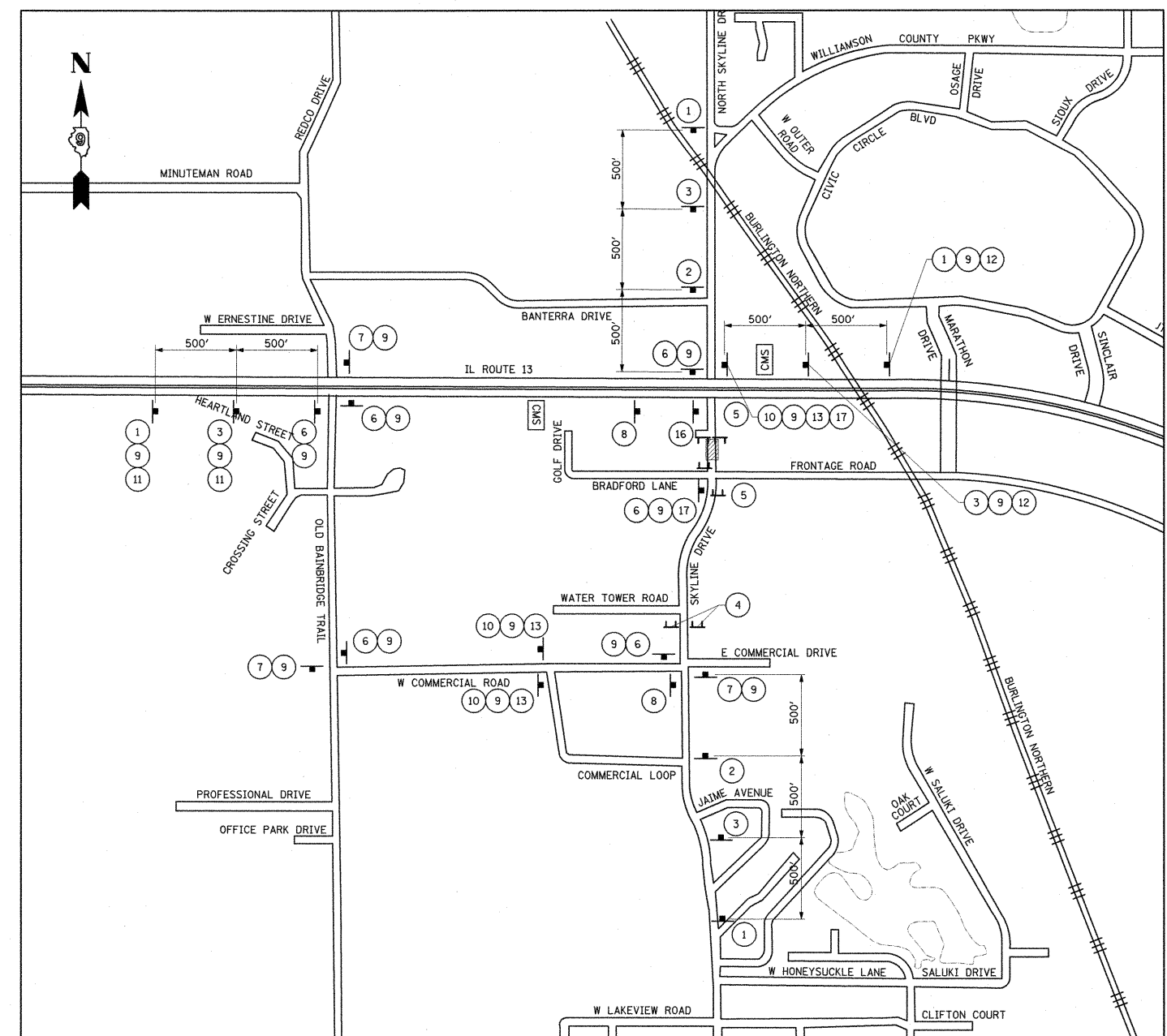
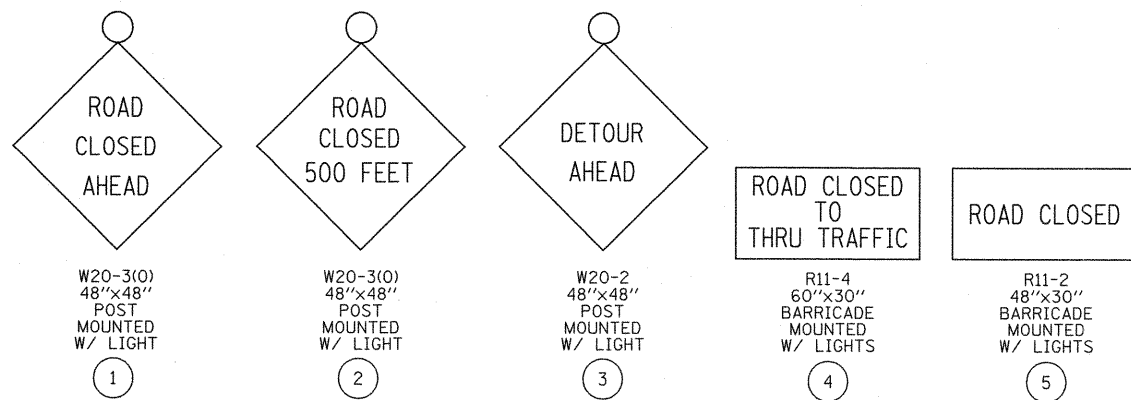


DETOUR-STAGE 1C
SKYLINE DRIVE SOUTH

NOTES:
SIGNS SHOWN ARE IN ADDITION TO SPECIFIED TRAFFIC CONTROL STANDARDS AND SIGNS SHOWN IN MAINTENANCE OF TRAFFIC STAGING PLANS EXCEPT THE BARRICADES AND ROAD CLOSED SIGNS SHALL BE AS SHOWN ON THE MAINTENANCE OF TRAFFIC STAGING PLANS.

CLOSURE SHALL BE LIMITED TO 30 CALENDAR DAYS.



DETOUR-STAGE 1D
SKYLINE DRIVE SOUTH

NOTES:
SIGNS SHOWN ARE IN ADDITION TO SPECIFIED TRAFFIC CONTROL STANDARDS AND SIGNS SHOWN IN MAINTENANCE OF TRAFFIC STAGING PLANS EXCEPT THE BARRICADES AND ROAD CLOSED SIGNS SHALL BE AS SHOWN ON THE MAINTENANCE OF TRAFFIC STAGING PLANS.

STAGE 1D CHANGEABLE MESSAGE SIGN TEXT

