



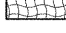

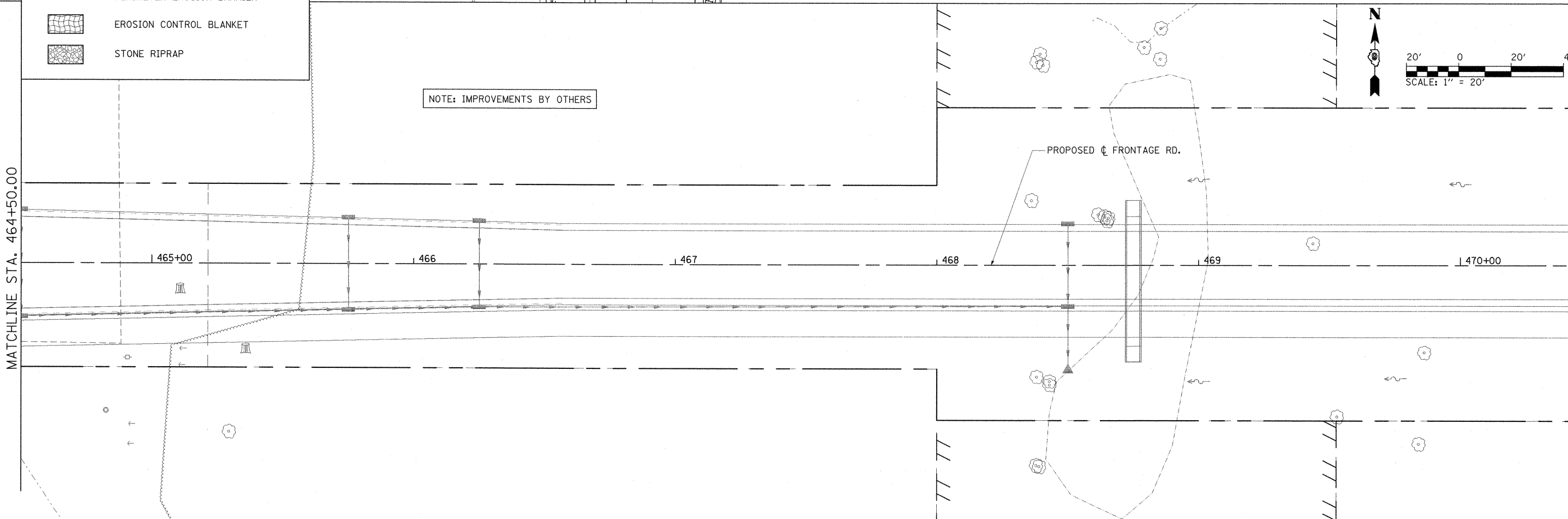
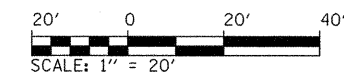


**LEGEND**

-  INLET AND PIPE PROTECTION
-  TEMPORARY DITCH CHECKS
-  SEDIMENT BASIN
-  PERIMETER EROSION BARRIER
-  EROSION CONTROL BLANKET
-  STONE RIPRAP

NOTE: IMPROVEMENTS BY OTHERS



FILE NAME =	USER NAME = OpenH&B Springfield	DESIGNED - BMB	REVISED -
3:\dot\0906003\Draw\CADD_Sheets\099885	hshtreros003.dgn	DRAWN - GLD	REVISED -
	PLOT SCALE = 20.0000' / IN.	CHECKED - SPH	REVISED -
	PLOT DATE = 12/14/2011	DATE - 12/9/11	REVISED -

**STATE OF ILLINOIS  
DEPARTMENT OF TRANSPORTATION**

**EROSION AND SEDIMENT CONTROL PLAN  
FRONTAGE ROAD**

SCALE: 1" = 20'    SHEET NO.    OF    SHEETS    STA. 460+81.67    TO    STA. 462+20.86

F.A. RTE.	SECTION	COUNTY	TOTAL SHEETS	SHEET NO.
331	(1X-1) VB-1, B-1, N-4, R-3	WILLIAMSON	367	105
			CONTRACT NO. 98859	
ILLINOIS FED. AID PROJECT				