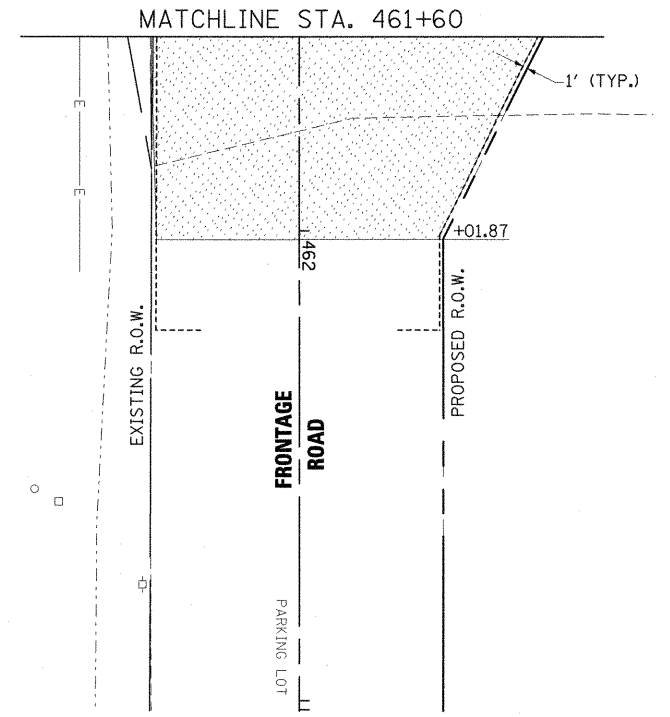
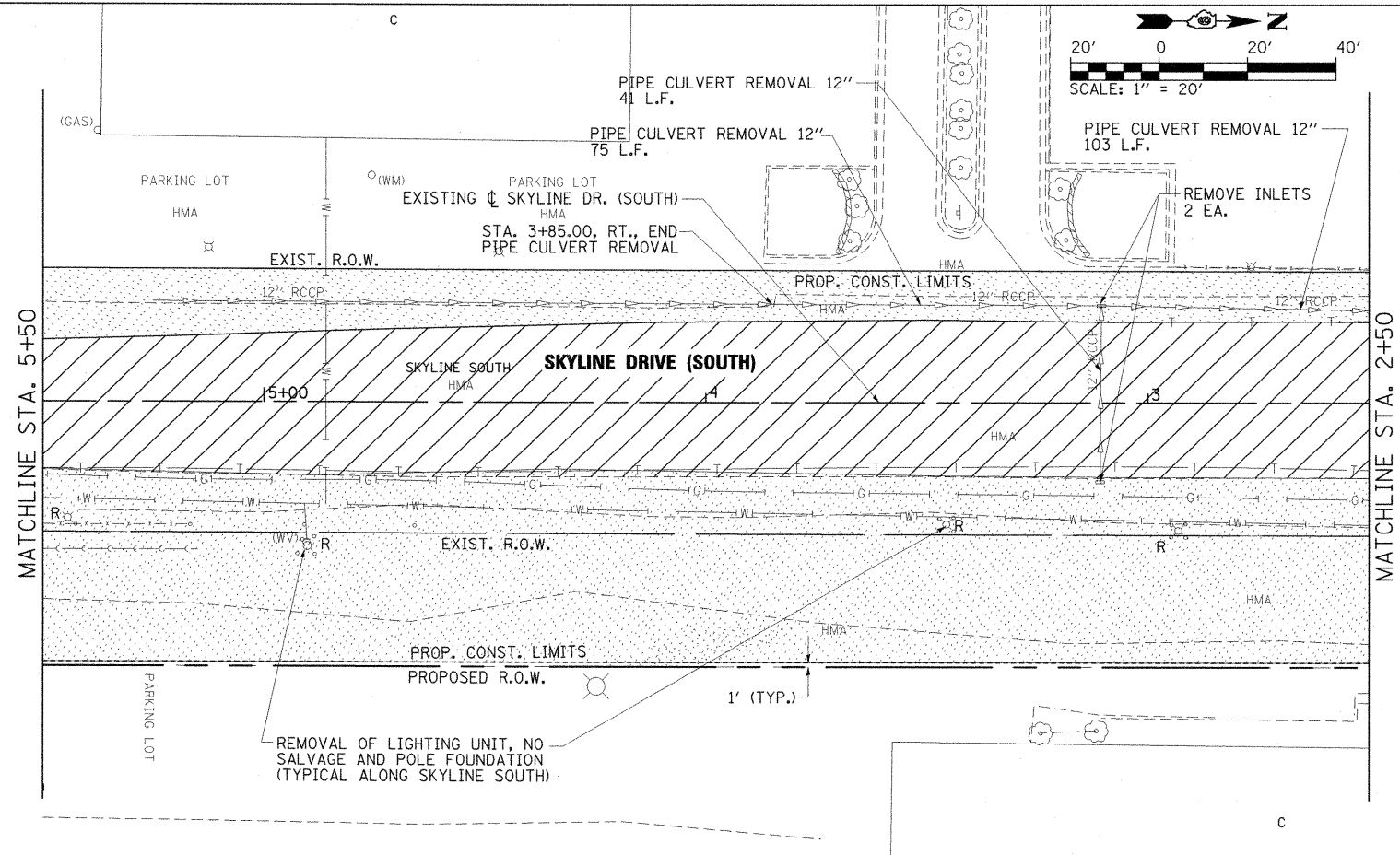


LEGEND	
	- COMBINATION CURB AND GUTTER REMOVAL
	- MEDIAN AND ISLAND REMOVAL
	- PAVEMENT REMOVAL
	- HOT-MIX ASPHALT SURFACE REMOVAL, 1/2\"/>
	- PAVED SHOULDER REMOVAL
	- DRIVEWAY PAVEMENT REMOVAL
X	- TREE REMOVAL

NOTE: MISCELLANEOUS REMOVALS NOT CALLED OUT INCLUDING SIGNS, SEGMENTAL BLOCK WALL AROUND CAR DEALERSHIP, PARKING BUMPER BLOCKS, AND BOLLARDS SHALL NOT BE PAID FOR SEPARATELY BUT INCLUDED IN THE COST OF TRAFFIC CONTROL AND PROTECTION (SPECIAL).



FILE NAME = I:\dot\0906603\draw\CADD_Sheets\D99885	USER NAME = OpenH&B Springfield	DESIGNED - BMB	REVISED -	STATE OF ILLINOIS DEPARTMENT OF TRANSPORTATION	REMOVAL PLAN SKYLINE DRIVE	F.A. RTE. 331	SECTION (1X-1) VB-1, B-1, N-4, R-3	COUNTY WILLIAMSON	TOTAL SHEETS 367	SHEET NO. 122		
PLOT SCALE = 20.0000' / IN.	CHECKED - SPH	DATE - 12/9/11	REVISED -			SCALE: 1" = 20'	SHEET NO. OF SHEETS	STA. 9+46.39	TO STA. 2+50	ILLINOIS FED. AID PROJECT		
PLOT DATE = 12/14/2011	DATE - 12/9/11	REVISED -	REVISED -									