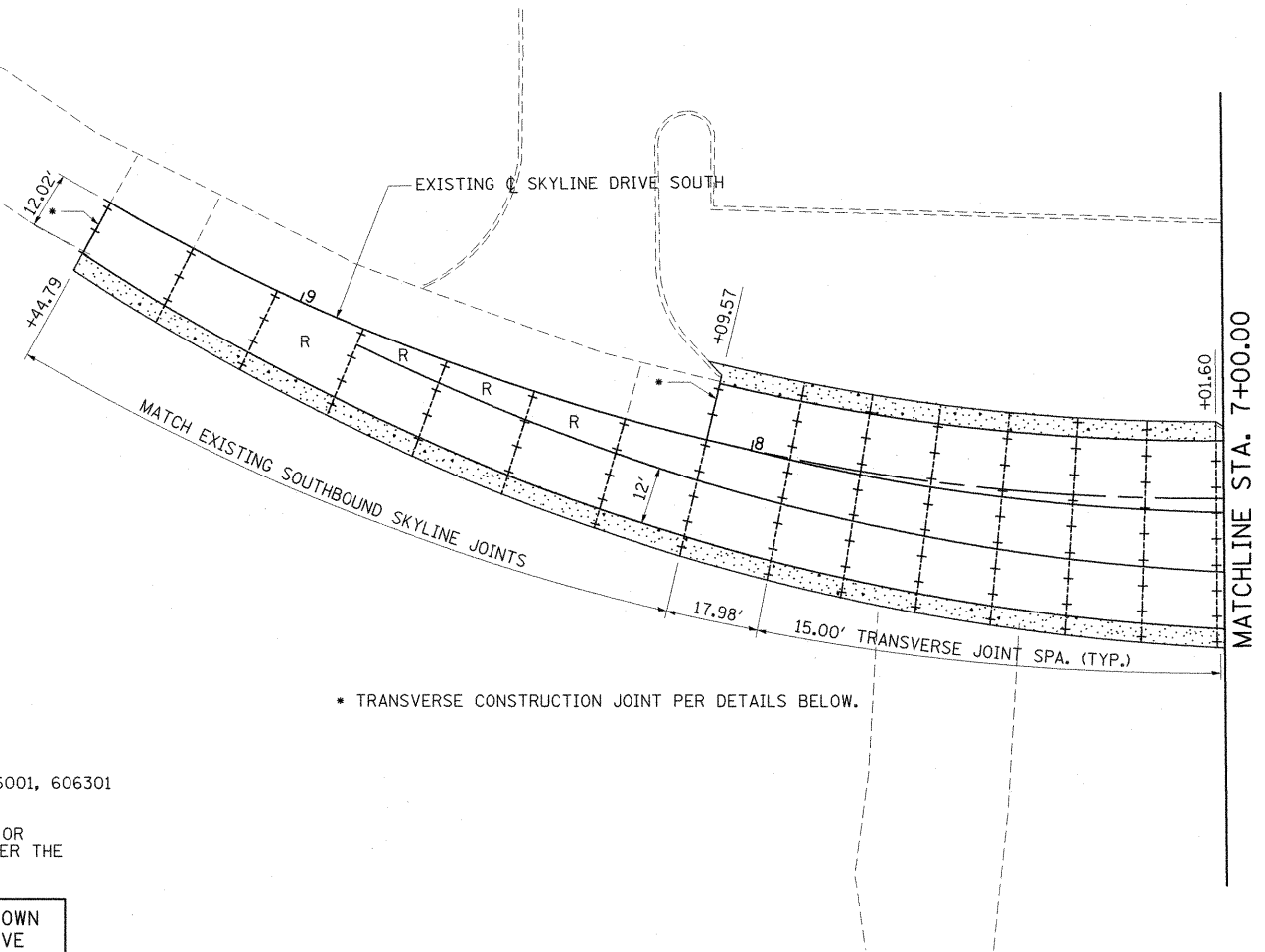


| LEGEND | |
|--------|--|
| | PROPOSED 2" TRANSVERSE EXPANSION JOINT (DOWELED) |
| | PROPOSED TRANSVERSE CONTRACTION JOINT (DOWELED) |
| | PROPOSED LONGITUDINAL TIED JOINT WITH NO. 6 BARS |
| | LONGITUDINAL KEYED JOINT |
| | PAVEMENT FABRIC (STD. 420701) |
| | PCC SHOULDER (STD. 483001) |

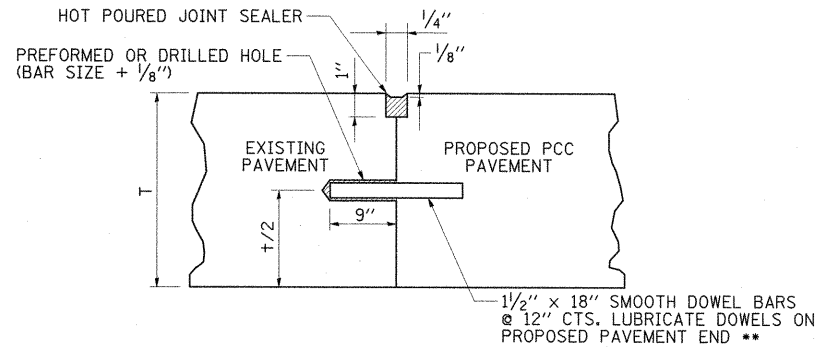
NOTES:

- SEE STANDARDS 420001, 420101, 420106, 483001, 606001, 606301 FOR ADDITIONAL DETAILS.
- LONGITUDINAL JOINTS BETWEEN PROPOSED PAVEMENT OR SHOULDER AND EXISTING PAVEMENT SHALL BE TIED PER THE DETAILS BELOW.

TRANSVERSE CONTRACTION JOINT SPACING SHOWN IS ALONG THE PROPOSED CL OF SKYLINE DRIVE

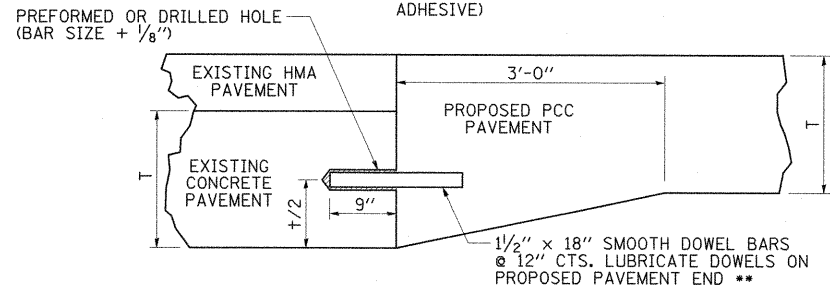


• TRANSVERSE CONSTRUCTION JOINT PER DETAILS BELOW.



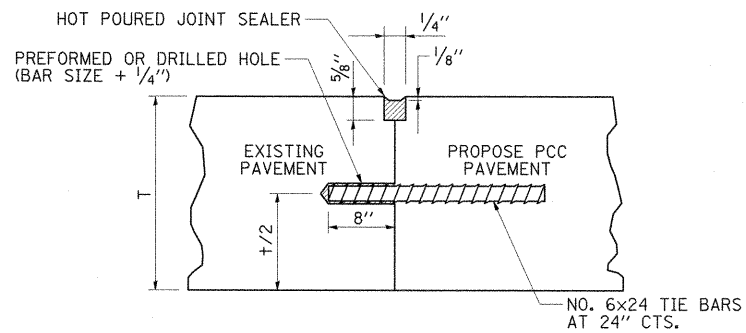
**TRANSVERSE CONSTRUCTION JOINT
DETAIL FOR EXISTING CONCRETE PAVEMENT *****

(DOWEL BAR GROUTED IN PLACE WITH AN APPROVED NON-SHRINK GROUT OR CHEMICAL ADHESIVE)



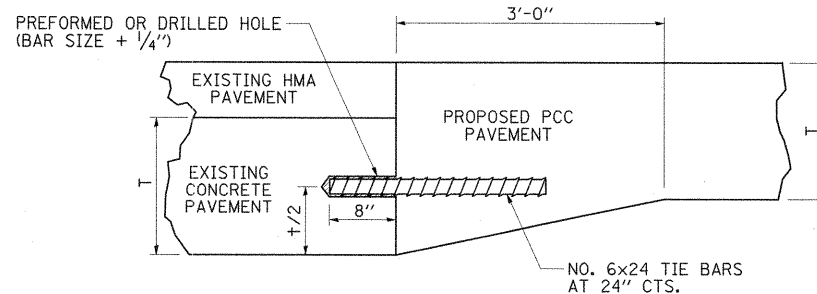
**TRANSVERSE CONSTRUCTION JOINT
DETAIL FOR EXISTING CONCRETE PAVEMENT
WITH HMA OVERLAY**

(DOWEL BAR GROUTED IN PLACE WITH AN APPROVED NON-SHRINK GROUT OR CHEMICAL ADHESIVE)



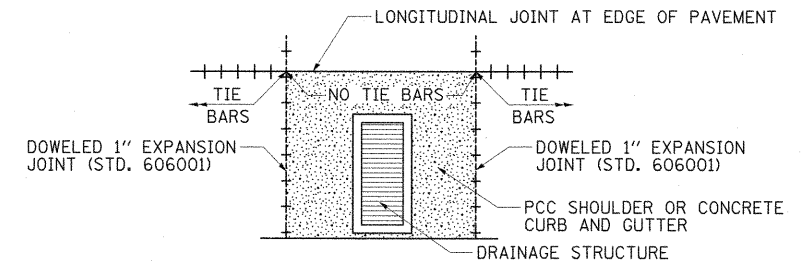
**LONGITUDINAL CONSTRUCTION JOINT
DETAIL FOR PROPOSED PAVEMENT OR SHOULDER
ADJACENT TO EXISTING CONCRETE PAVEMENT *****

(TIE BAR GROUTED IN PLACE PER ART. 420.05)



**LONGITUDINAL CONSTRUCTION JOINT
DETAIL FOR PROPOSED PAVEMENT OR SHOULDER
ADJACENT TO EXISTING CONCRETE PAVEMENT WITH HMA OVERLAY**

(TIE BAR GROUTED IN PLACE PER ART. 420.05)



**DRAINAGE STRUCTURE
JOINT DETAIL**

** ADJUST DOWEL DIAMETER PER CHART ON STD. 420001 WHEN EXISTING OR PROPOSED PAVEMENT THICKNESS IS LESS THAN 8".

*** CENTER DOWEL OR TIE BAR ON THINNER PAVEMENT SECTION IF CONCRETE PAVEMENT THICKNESSES DIFFER.

| | | | | | | | | | | | | |
|--|---------------------------------|----------------------|-----------------------------|---|--|-------------------------|------------------------------------|--------------------|------------------|---------------|--|--|
| FILE NAME = I:\dot\0906603\draw\cadd\sheet\099885-sh-jointing005.dgn | USER NAME = OpenH8B Springfield | DESIGNED - BMB / KPF | REVISED - | STATE OF ILLINOIS DEPARTMENT OF TRANSPORTATION | JOINTING PLAN SKYLINE DRIVE AND DETAILS | F.A. RTE. 331 | SECTION (1X-1) VB-1, B-1, N-4, R-3 | COUNTY WILLIAMSON | TOTAL SHEETS 367 | SHEET NO. 135 | | |
| PLOT SCALE = 20.0000' / IN. | CHECKED - SPH | REVISIED - | SCALE: 1"= 20' | | | SHEET NO. 5 OF 5 SHEETS | STA. N/A TO STA. N/A | CONTRACT NO. 98859 | | | | |
| PLOT DATE = 12/12/2011 | DATE - 12/9/11 | REVISIED - | [ILLINOIS] FED. AID PROJECT | | | | | | | | | |
| | | | | | | | | | | | | |