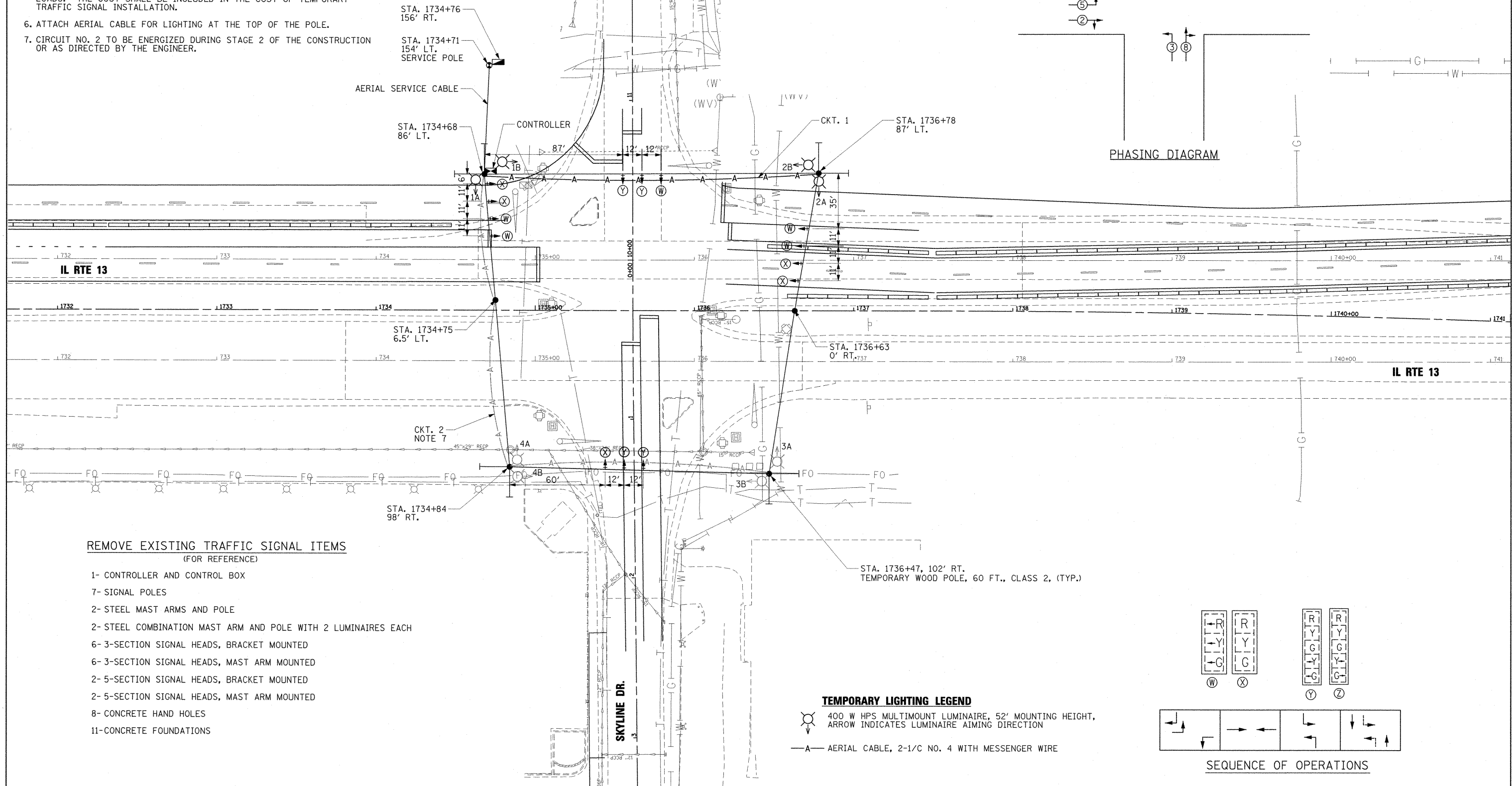
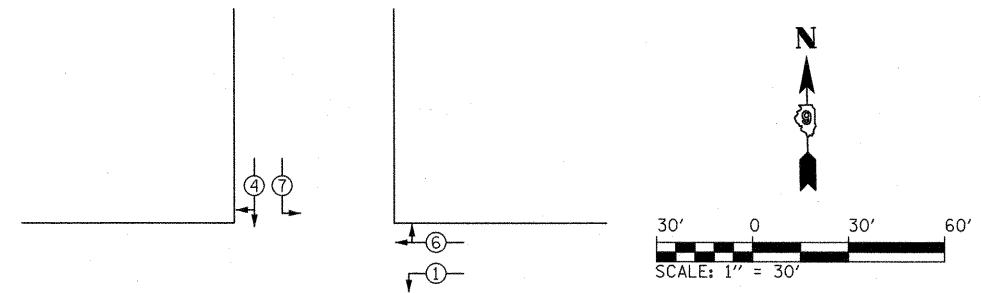


NOTES:

1. THE TEMPORARY SIGNALS MUST BE INSTALLED AND THE EXISTING SIGNALS REMOVED BEFORE THE WIDENING AT THE INTERSECTION CAN BE COMPLETED.
2. SUFFICIENT CABLE SHALL BE COILED AT THE NEAR POLE TO ALLOW MOVING SIGNAL HEADS DURING THE MULTIPLE CONSTRUCTION STAGING LOCATIONS WITHOUT ADDING NEW CABLE.
3. SIGNAL HEAD LOCATIONS SHOWN ARE BASED ON THE POLE LOCATIONS SHOWN. FINAL SIGNAL HEAD LOCATIONS SHOULD BE DETERMINED IN THE FIELD FOR EACH SUBSTAGE AND APPROVED BY DISTRICT 9.
4. TEMPORARY LIGHTING LUMINAIRES SHALL BE FED FROM CIRCUIT BREAKERS IN THE TRAFFIC SIGNAL CONTROLLER.
5. ADD GUYS AND ANCHORS AS NEEDED TO SUPPORT THE POLE AGAINST CABLE LOADS. THE COST SHALL BE INCLUDED IN THE COST OF TEMPORARY TRAFFIC SIGNAL INSTALLATION.
6. ATTACH AERIAL CABLE FOR LIGHTING AT THE TOP OF THE POLE.
7. CIRCUIT NO. 2 TO BE ENERGIZED DURING STAGE 2 OF THE CONSTRUCTION OR AS DIRECTED BY THE ENGINEER.

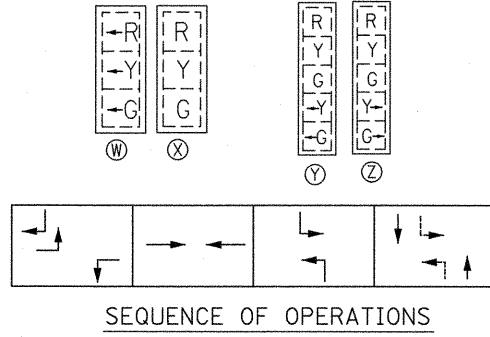


- 1- CONTROLLER AND CONTROL BOX
- 7- SIGNAL POLES
- 2- STEEL MAST ARMS AND POLE
- 2- STEEL COMBINATION MAST ARM AND POLE WITH 2 LUMINAIRES EACH
- 6- 3-SECTION SIGNAL HEADS, BRACKET MOUNTED
- 6- 3-SECTION SIGNAL HEADS, MAST ARM MOUNTED
- 2- 5-SECTION SIGNAL HEADS, BRACKET MOUNTED
- 2- 5-SECTION SIGNAL HEADS, MAST ARM MOUNTED
- 8- CONCRETE HAND HOLES
- 11- CONCRETE FOUNDATIONS

TEMPORARY LIGHTING LEGEND

400 W HPS MULTIMOUNT LUMINAIRE, 52' MOUNTING HEIGHT, ARROW INDICATES LUMINAIRE AIMING DIRECTION

AERIAL CABLE, 2-1/C NO. 4 WITH MESSENGER WIRE



FILE NAME =	USER NAME = OpenH8B Springfield	DESIGNED - IDOT CENTRAL OFFICE	REVISED -	STATE OF ILLINOIS DEPARTMENT OF TRANSPORTATION	TEMPORARY SIGNAL & LIGHTING PLAN STAGE 1 (VARIOUS SUBSTAGES) ILLINOIS ROUTE 13 AND SKYLINE DRIVE	F.A. RTE.	SECTION	COUNTY	TOTAL SHEETS	SHEET NO.
I:\dot\0906603\draw\cadd\sheet\0998859\sheet-TEMPORARY-1A-SKYLINE002.dgn	DRAWN - GLD (CMT)	REVISED -	331			(1X-1) VB-1, B-1, N-4, R-3	WILLIAMSON	367	155	
PLOT SCALE = 30.0000 / IN.	CHECKED - SPH	REVISED -	CONTRACT NO. 98859							
PLOT DATE = 12/13/2011	DATE - 12/9/11	REVISED -	ILLINOIS FED. AID PROJECT							