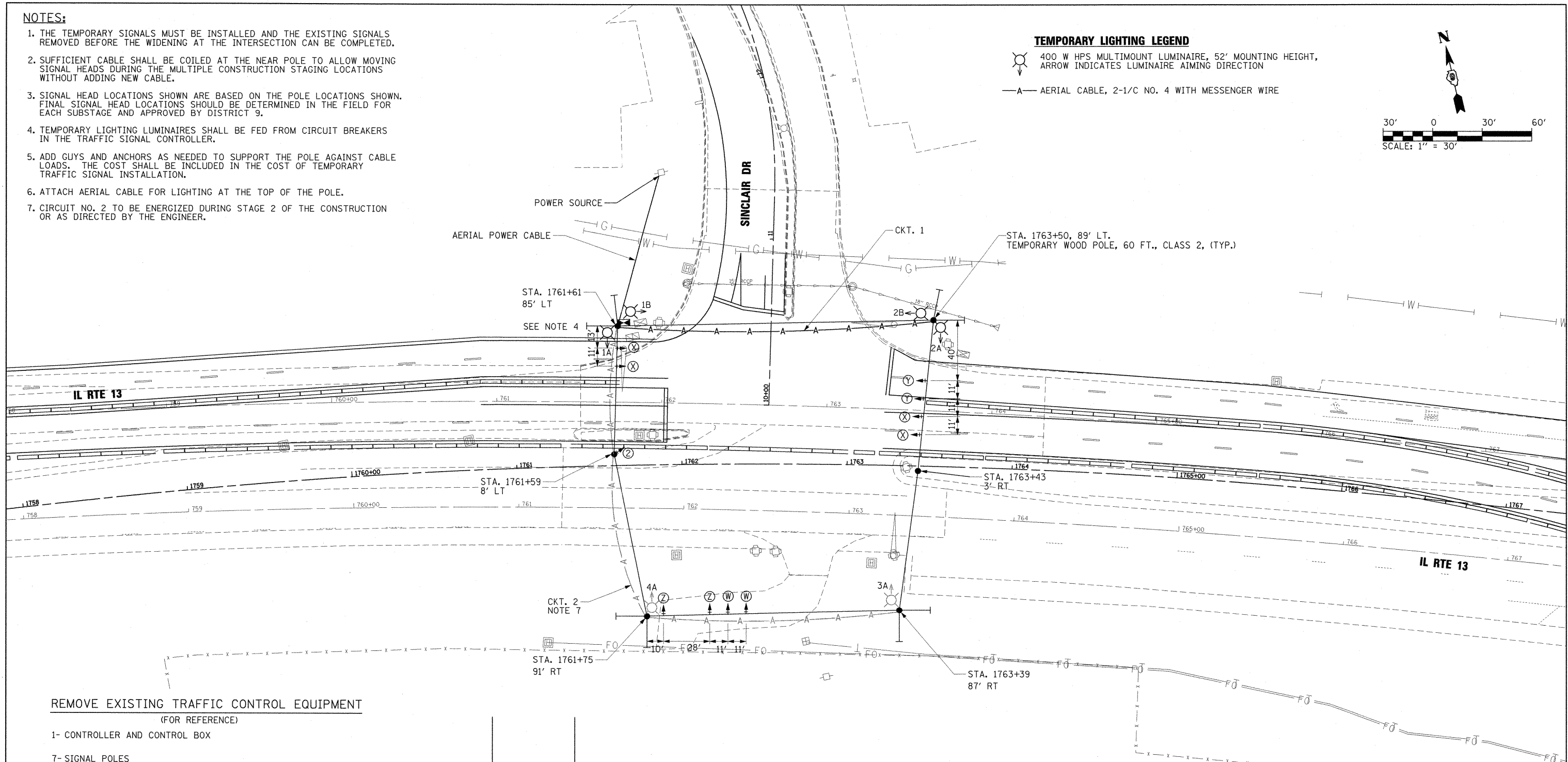
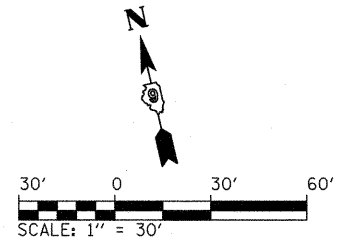


NOTES:

1. THE TEMPORARY SIGNALS MUST BE INSTALLED AND THE EXISTING SIGNALS REMOVED BEFORE THE WIDENING AT THE INTERSECTION CAN BE COMPLETED.
2. SUFFICIENT CABLE SHALL BE COILED AT THE NEAR POLE TO ALLOW MOVING SIGNAL HEADS DURING THE MULTIPLE CONSTRUCTION STAGING LOCATIONS WITHOUT ADDING NEW CABLE.
3. SIGNAL HEAD LOCATIONS SHOWN ARE BASED ON THE POLE LOCATIONS SHOWN. FINAL SIGNAL HEAD LOCATIONS SHOULD BE DETERMINED IN THE FIELD FOR EACH SUBSTAGE AND APPROVED BY DISTRICT 9.
4. TEMPORARY LIGHTING LUMINAIRES SHALL BE FED FROM CIRCUIT BREAKERS IN THE TRAFFIC SIGNAL CONTROLLER.
5. ADD GUYS AND ANCHORS AS NEEDED TO SUPPORT THE POLE AGAINST CABLE LOADS. THE COST SHALL BE INCLUDED IN THE COST OF TEMPORARY TRAFFIC SIGNAL INSTALLATION.
6. ATTACH AERIAL CABLE FOR LIGHTING AT THE TOP OF THE POLE.
7. CIRCUIT NO. 2 TO BE ENERGIZED DURING STAGE 2 OF THE CONSTRUCTION OR AS DIRECTED BY THE ENGINEER.

TEMPORARY LIGHTING LEGEND

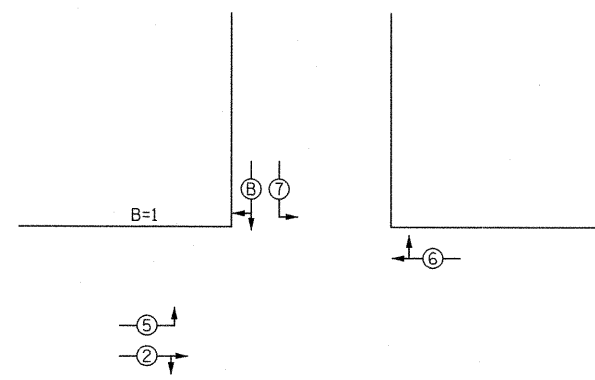
- 400 W HPS MULTIMOUNT LUMINAIRE, 52' MOUNTING HEIGHT, ARROW INDICATES LUMINAIRE AIMING DIRECTION
- AERIAL CABLE, 2-1/8" NO. 4 WITH MESSENGER WIRE



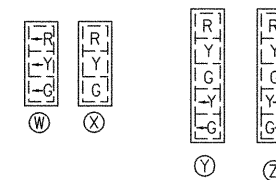
REMOVE EXISTING TRAFFIC CONTROL EQUIPMENT

(FOR REFERENCE)

- 1- CONTROLLER AND CONTROL BOX
- 7- SIGNAL POLES
- 1- STEEL MAST ARM AND POLE
- 2- COMBINATION MAST ARM POLE WITH TWO LUMINAIRES EACH
- 8- 3-SECTION SIGNAL HEADS, BRACKET MOUNTED
- 6- 3-SECTION SIGNAL HEADS, MAST ARM MOUNTED
- 9- CONCRETE HANDHOLE
- 11- CONCRETE FOUNDATION



PHASING DIAGRAM



SEQUENCE OF OPERATIONS

FILE NAME =	USER NAME = OpenH8B Springfield	DESIGNED - IDOT CENTRAL OFFICE	REVISED -	STATE OF ILLINOIS DEPARTMENT OF TRANSPORTATION	TEMPORARY SIGNAL & LIGHTING PLAN STAGE 1 (VARIOUS SUBSTAGES) ILLINOIS ROUTE 13 AND SINCLAIR DRIVE				F.A. RTE.	SECTION	COUNTY	TOTAL SHEETS	SHEET NO.
I:\dot\0906603\draw\oad\sheet\0998859-sh1-ts-TEMPORARY-1A-SINCLAIR002.dgn		DRAWN - GLD (CMT)	REVISED -		331	(1X-1) VB-1, B-1, N-4, R-3	WILLIAMSON	367	156				
PLOT SCALE = 30.0000 "/ IN.		CHECKED - SPH	REVISED -		CONTRACT NO. 98859								
PLOT DATE = 12/13/2011		DATE - 12/9/11	REVISED -		ILLINOIS FED. AID PROJECT								