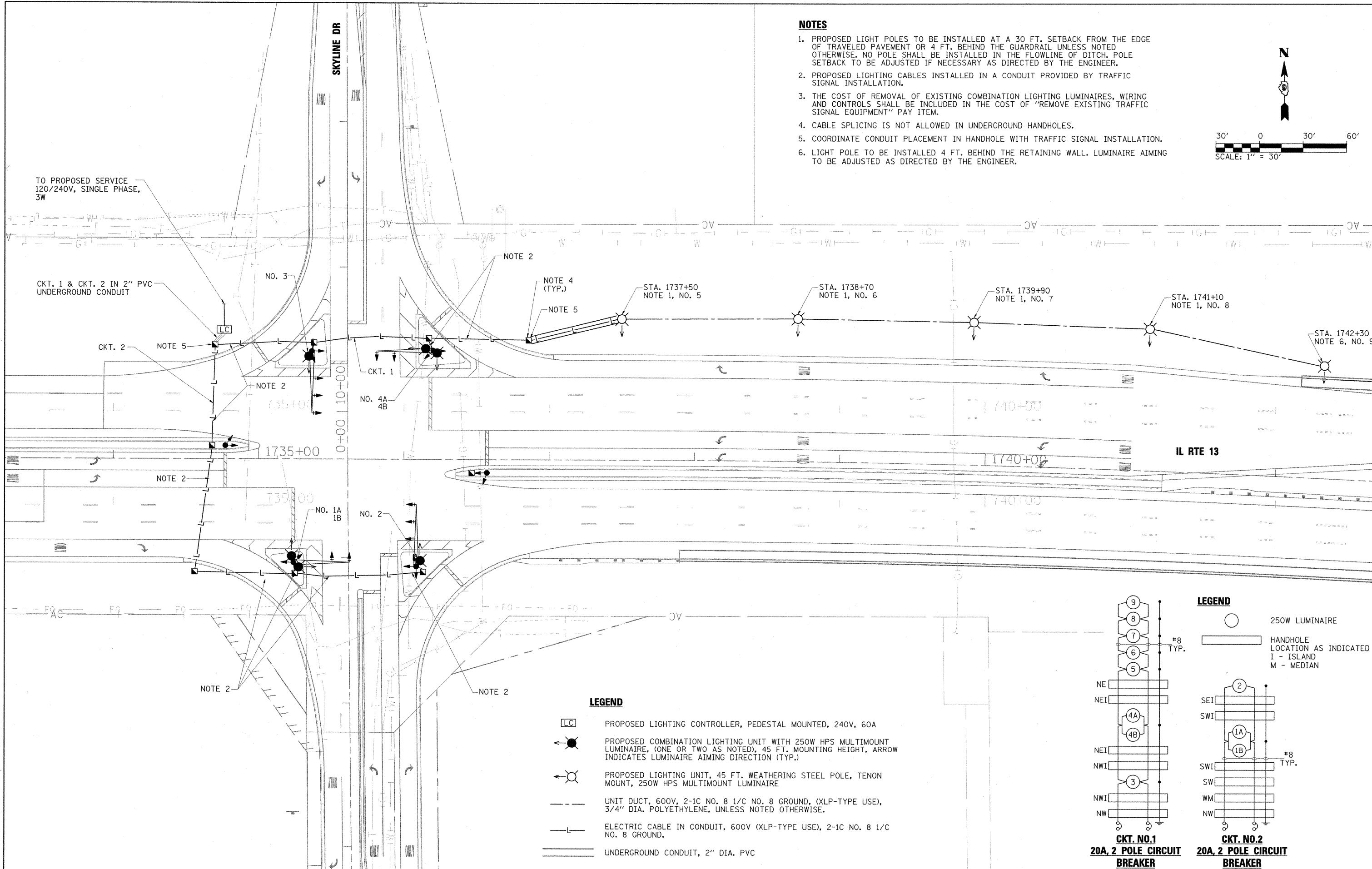
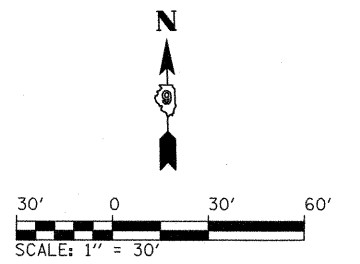


**NOTES**

1. PROPOSED LIGHT POLES TO BE INSTALLED AT A 30 FT. SETBACK FROM THE EDGE OF TRAVELED PAVEMENT OR 4 FT. BEHIND THE GUARDRAIL UNLESS NOTED OTHERWISE. NO POLE SHALL BE INSTALLED IN THE FLOWLINE OF DITCH. POLE SETBACK TO BE ADJUSTED IF NECESSARY AS DIRECTED BY THE ENGINEER.
2. PROPOSED LIGHTING CABLES INSTALLED IN A CONDUIT PROVIDED BY TRAFFIC SIGNAL INSTALLATION.
3. THE COST OF REMOVAL OF EXISTING COMBINATION LIGHTING LUMINAIRES, WIRING AND CONTROLS SHALL BE INCLUDED IN THE COST OF "REMOVE EXISTING TRAFFIC SIGNAL EQUIPMENT" PAY ITEM.
4. CABLE SPLICING IS NOT ALLOWED IN UNDERGROUND HANDHOLES.
5. COORDINATE CONDUIT PLACEMENT IN HANDHOLE WITH TRAFFIC SIGNAL INSTALLATION.
6. LIGHT POLE TO BE INSTALLED 4 FT. BEHIND THE RETAINING WALL. LUMINAIRE AIMING TO BE ADJUSTED AS DIRECTED BY THE ENGINEER.

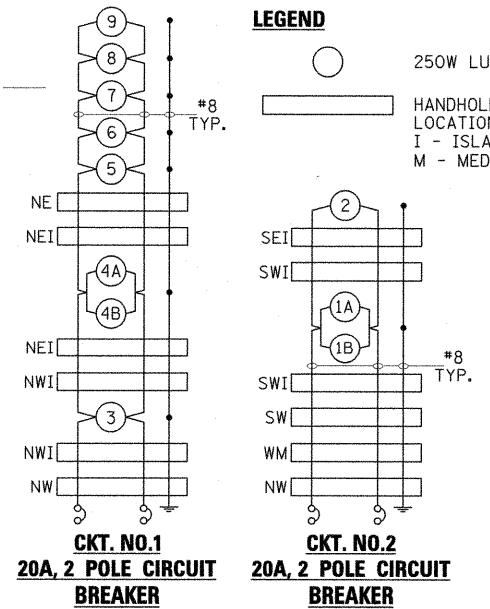


**LEGEND**

- PROPOSED LIGHTING CONTROLLER, PEDESTAL MOUNTED, 240V, 60A
- PROPOSED COMBINATION LIGHTING UNIT WITH 250W HPS MULTIMOUNT LUMINAIRE, (ONE OR TWO AS NOTED), 45 FT. MOUNTING HEIGHT, ARROW INDICATES LUMINAIRE AIMING DIRECTION (TYP.)
- PROPOSED LIGHTING UNIT, 45 FT. WEATHERING STEEL POLE, TENON MOUNT, 250W HPS MULTIMOUNT LUMINAIRE
- UNIT DUCT, 600V, 2-1C NO. 8 1/C NO. 8 GROUND, (XLP-TYPE USE), 3/4" DIA. POLYETHYLENE, UNLESS NOTED OTHERWISE.
- ELECTRIC CABLE IN CONDUIT, 600V (XLP-TYPE USE), 2-1C NO. 8 1/C NO. 8 GROUND.
- UNDERGROUND CONDUIT, 2" DIA. PVC

**LEGEND**

- 250W LUMINAIRE
- HANDHOLE LOCATION AS INDICATED  
I - ISLAND  
M - MEDIAN



FILE NAME =	USER NAME = OpenH&B Springfield	DESIGNED - IDOT CENTRAL OFFICE	REVISED -
I:\dot\0906603\draw\cadd\sheet\099885	Light-001-Rte13.dgn	DRAWN - GLD (CMT)	REVISED -
PLOT SCALE = 38.0000 "/>			
PLOT DATE = 12/14/2011	DATE - 12/9/11	REVISIONS	REVISIONS

**STATE OF ILLINOIS  
DEPARTMENT OF TRANSPORTATION**

**PROPOSED LIGHTING PLAN  
SKYLINE DR. - IL RT 13 INTERSECTION**

SCALE: 1"=30'    SHEET NO.    OF    SHEETS    STA.    TO    STA.

F.A. RTE.	SECTION	COUNTY	TOTAL SHEETS	SHEET NO.
331	(IX-1) VB-1, B-1, N-4, R-3	WILLIAMSON	367	160
CONTRACT NO. 98859				
ILLINOIS FED. AID PROJECT				