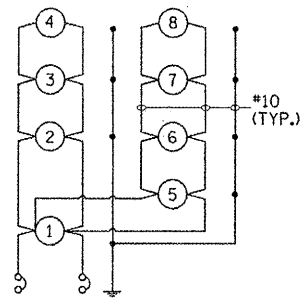
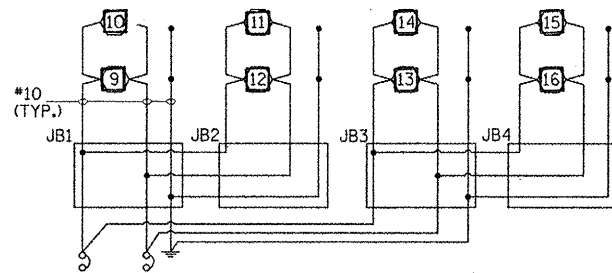


LEGEND

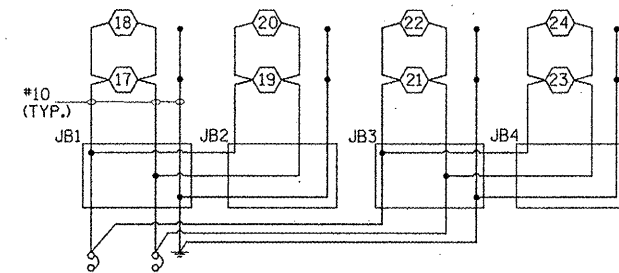
- 150W LUMINAIRE
- 250W LUMINAIRE
- ⬡ 70W LUMINAIRE



CKT. NO. 1
20A, 2 POLE CIRCUIT
BREAKER

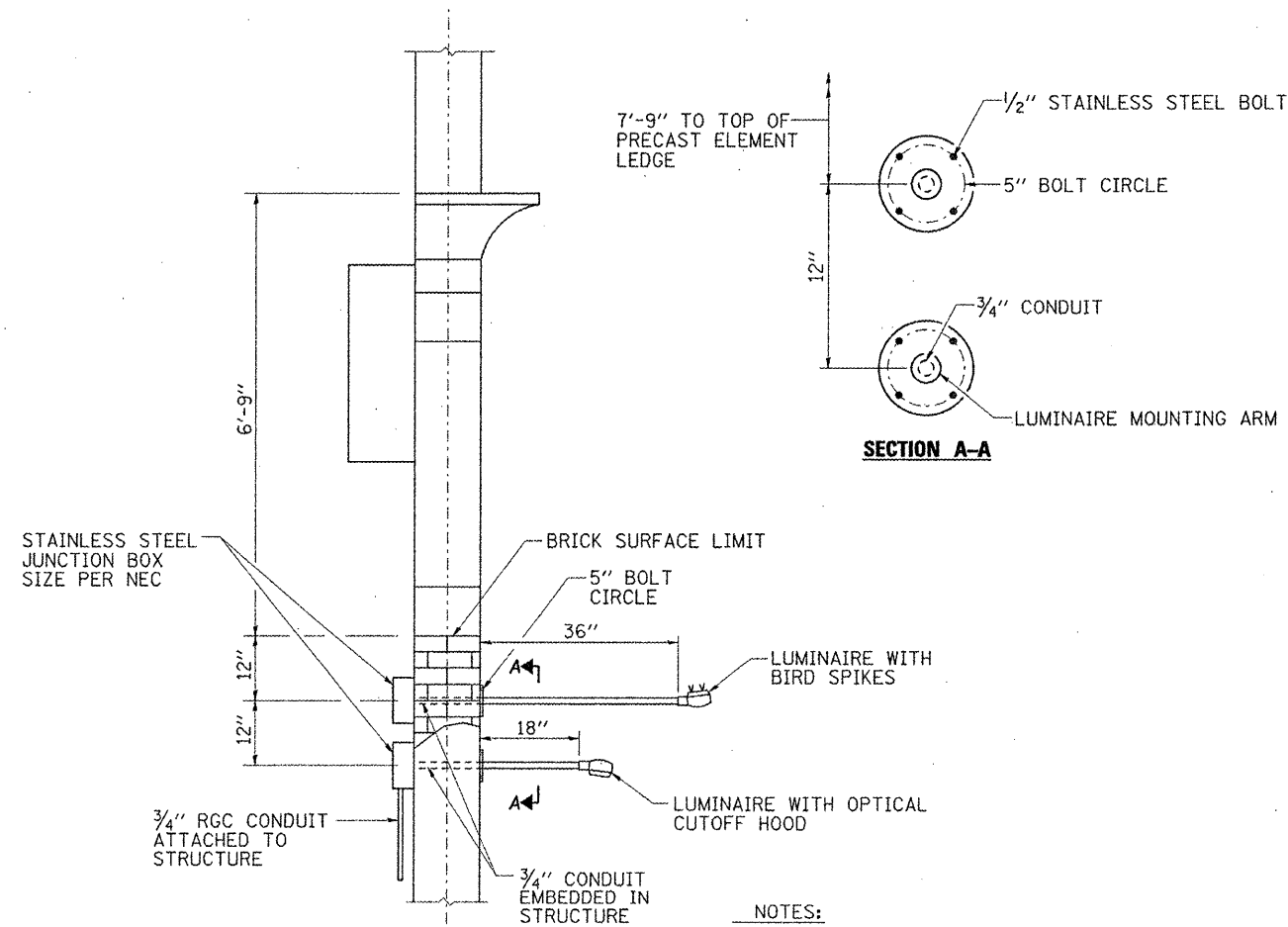


CKT. NO. 2
20A, 2 POLE CIRCUIT
BREAKER



CKT. NO. 3
20A, 2 POLE CIRCUIT
BREAKER

NOTE:
SMALLER JB's NOT SHOWN.



CLOCK TOWER ACCENT LIGHTING DETAIL
N.T.S.

- NOTES:
1. ALL EXPOSED FASTENERS, BOLTS, CLAMPS, JUNCTION BOXES AND MOUNTING HARDWARE SHALL BE STAINLESS STEEL.
 2. ANY PROPOSED LIGHTING HOLES REQUIRED FOR MOUNTING OR CONDUIT SHALL BE CAST INTO CONCRETE, NO DRILLING WILL BE ALLOWED.
 3. ELECTRICALLY BOND ALL JUNCTION BOXES PER NEC.

FILE NAME =	USER NAME = Gary Davis	DESIGNED - IDOT CENTRAL OFFICE	REVISED -	STATE OF ILLINOIS DEPARTMENT OF TRANSPORTATION	PROPOSED LIGHTING DETAILS MARATHON DR. - IL RT 13 INTERSECTION	F.A. RTE.	SECTION	COUNTY	TOTAL SHEETS	SHEET NO.	
1:\dot\0986603\draw\cadd\sheet\099885	Light009-Rte13.dgn	DRAWN - GLD (CMT)	REVISED -			331	(IX-1) VB-1, B-1, N-4, R-3	WILLIAMSON	367	166	
PLOT SCALE = 30.0000' / IN.		CHECKED -	REVISED -			CONTRACT NO. 98859					
PLOT DATE = 1/26/2012		DATE - 12/9/11	REVISED -			ILLINOIS FED. AID PROJECT					
					SCALE: 1" = 30'	SHEET NO. OF SHEETS STA. TO STA.					