

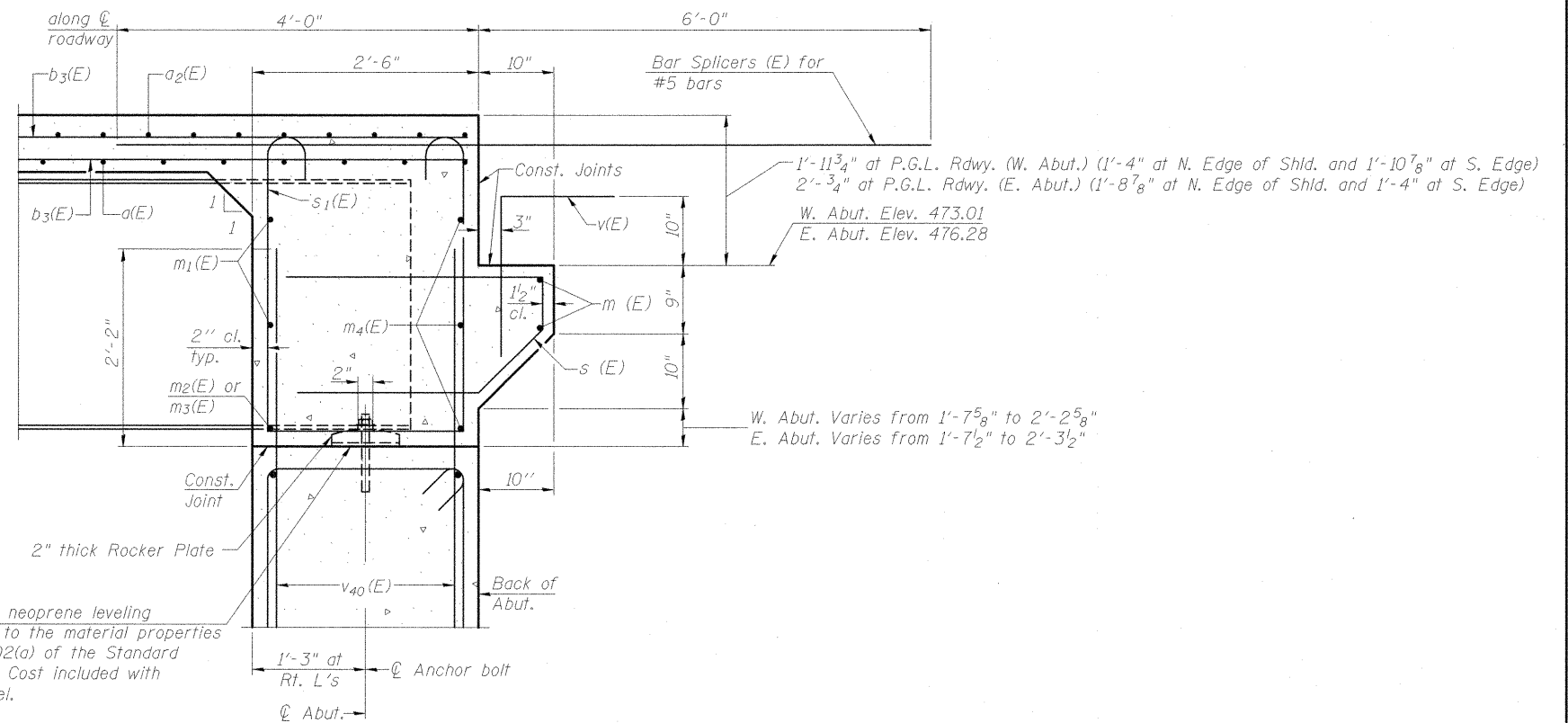
DIAPHRAGM ELEVATION AT ABUTMENT

(EAST ABUT. - LOOKING EAST)
(WEST ABUT. - OPP. HAND)

Notes:
Reinforcement bars in diaphragm are billed with superstructure on Sheet S-17 of S-41.
Concrete in diaphragm is included with Concrete Superstructure on Sheet S-17 of S-41.
For details of bars s(E) & s1(E) see Sheet S-17 of S-41.
The s(E) and s1(E) bars shall be placed parallel to the beams. Spacing for these bars shall be at right angles to the beams.

MIN. BAR LAP

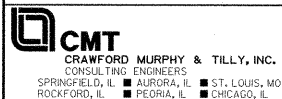
#6 bar = 3'-10"



SECTION A-A

Dimensions at right angles to abutment, except as shown.

FILE NAME = I:\doc\1906603\of\an\cead\sherts\structural\plans\brdg\rr_brdge\BCKWALL DETAIL S.EB.dgn



USER NAME = Gary Davis	DESIGNED - MCC	REVISED -
	CHECKED - ATI	REVISED -
PLOT SCALE =	DRAWN - GLD	REVISED -
PLOT DATE = 12/7/2011	CHECKED - ATI	REVISED -

**STATE OF ILLINOIS
DEPARTMENT OF TRANSPORTATION**

**BACKWALL DETAILS
STRUCTURE NO. 100-0094 (E.B.)**

SHEET NO. S-190F S-41 SHEETS

F.A.P. RTE. 331	SECTION (1X-1VB-1)	COUNTY WILLIAMSON	TOTAL SHEETS 367	SHEET NO. 185
				CONTRACT NO. 98859
ILLINOIS FED. AID PROJECT				