

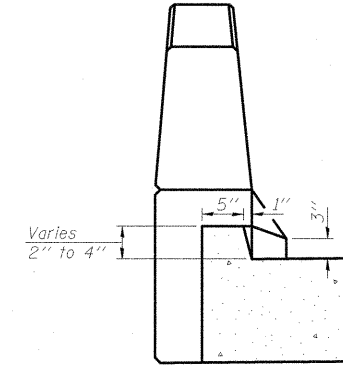
**PLAN**  
 (East Approach S.N. 100-0093 shown.  
 West Approach and S.N. 100-0094 similar)

\* Tilt #9b1(E) bars as required to maintain clearance.  
 \*\* Space between a0(E), typ. each parapet.

**MIN. BAR LAPS**  
 #4 Bar = 2'-0"  
 #5 Bar = 2'-6"

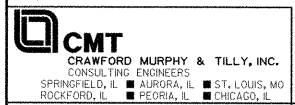
**NOTES:**

1. See Sheet S-22 of S-41 for Sections C-C, D-D, & E-E, and Approach Slab Bill of Material.
2. a0(E) and a1(E) bar spacings measured along  $\phi$  Rdwy.
3. Bars indicated thus 20x3-#5 etc. indicates 20 lines of bars with 3 lengths per line.



**VIEW A-A**

FILE NAME = I:\doc\0986803\draw\cadd\sheet\structural\plans\brdg\app\APPROACH SLAB DETAILS I.dgn



USER NAME = Gary Davis	DESIGNED - MCC	REVISED -
	CHECKED - ATI	REVISED -
PLOT SCALE =	DRAWN - GLD	REVISED -
PLOT DATE = 12/7/2011	CHECKED - ATI	REVISED -

**STATE OF ILLINOIS**  
**DEPARTMENT OF TRANSPORTATION**

**APPROACH SLAB DETAILS I**  
**STRUCTURE NO. 100-0093 (W.B.) & 100-0094 (E.B.)**

F.A.P. RTE. 331	SECTION (1X-1)VB-1	COUNTY WILLIAMSON	TOTAL SHEETS 367	SHEET NO. 187
			CONTRACT NO. 98859	
ILLINOIS FED. AID PROJECT				

SHEET NO. S-21 OF S-41 SHEETS