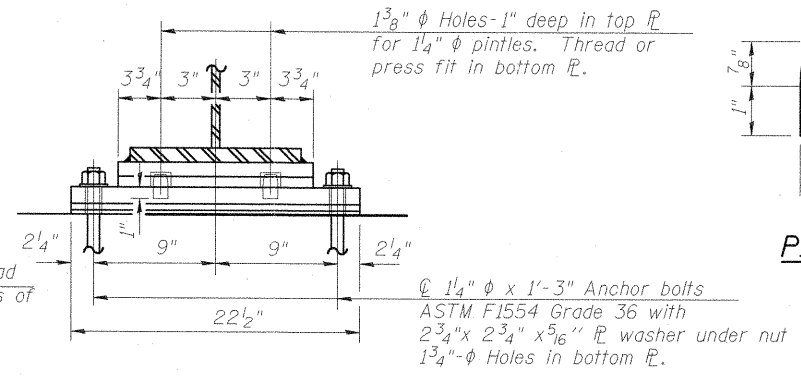
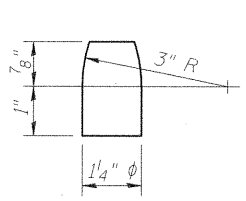


ELEVATION

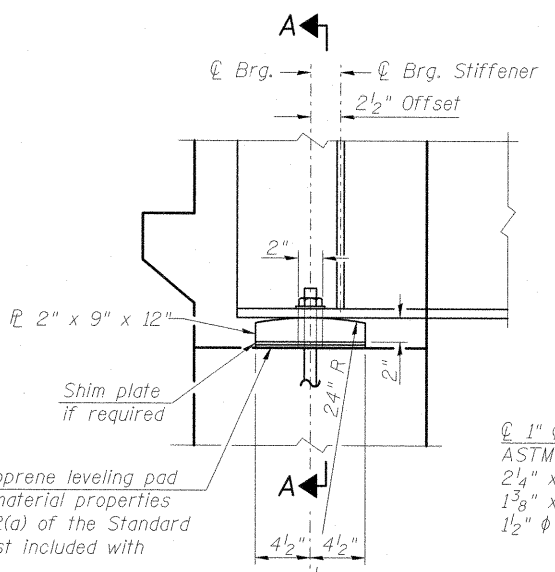
FIXED BEARING - PIER 1 & 2



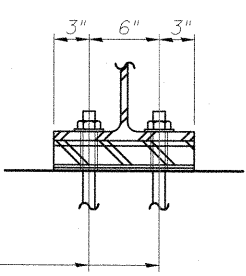
SECTION B-B



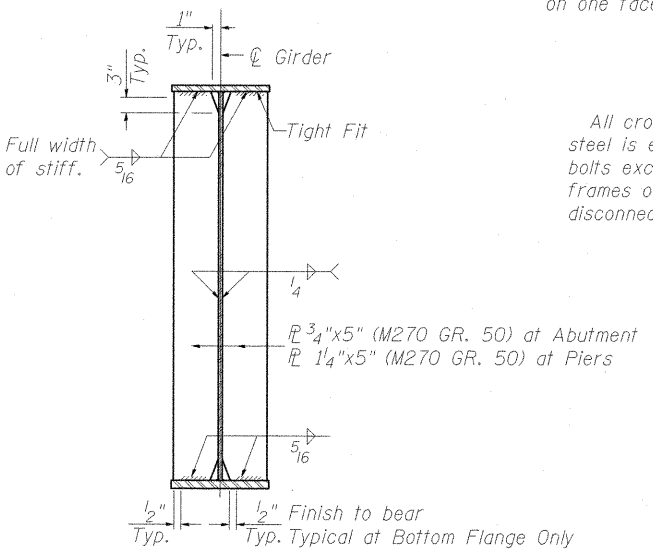
PINTLE



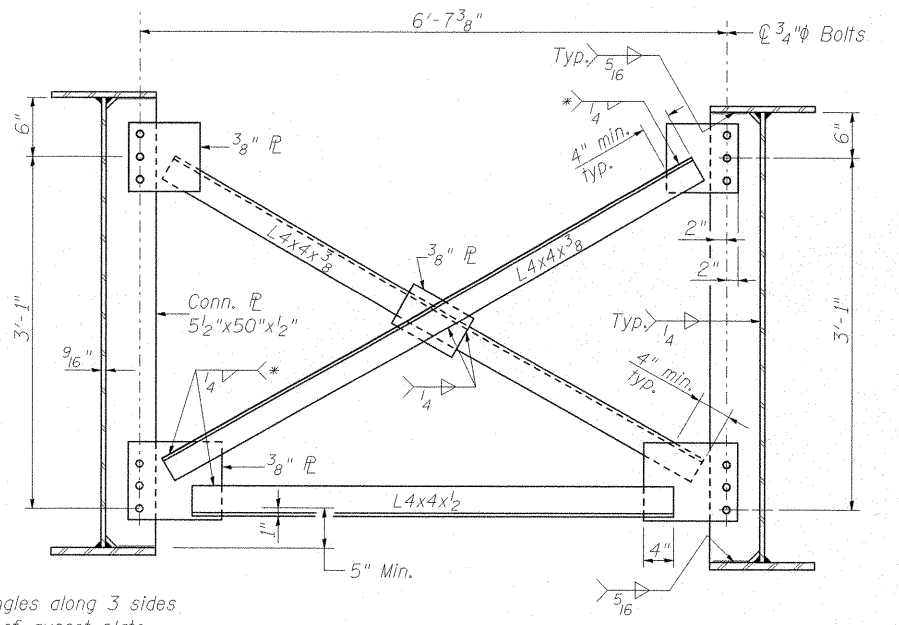
ELEVATION AT INTEGRAL ABUTMENT



SECTION A-A



BEARING STIFFENERS AT ABUTMENT AND PIERS



TYPICAL INTERIOR CROSS FRAME

(105 Required for S.N. 100-0093 (W.B.))
(105 Required for S.N. 100-0094 (E.B.))

* Fillet weld angles along 3 sides on one face of gusset plate.

All cross frames or diaphragms shall be installed as steel is erected and secured with erection pins and bolts except as otherwise noted. Individual cross frames or diaphragms at supports may be temporarily disconnected to install bearing anchor rods.

Detail 5/16" diameter holes for all 3/4" diameter bolts.

Two hardened washers required for each set of oversized holes.

BILL OF MATERIAL

Item	Unit	Total
Anchor Bolts, 1"	Each	64
Anchor Bolts, 1 1/4"	Each	64

NOTES

- All steel for flanges, webs and bearings shall be AASHTO M270 Grade 50.
- Anchor bolts shall be ASTM F1554 all-thread (or an Engineer-approved alternate material) of the grade(s) and diameter(s) specified. The corresponding specified grade of AASHTO M314 anchor bolts may be used in lieu of ASTM F1554.
- Anchor bolts at fixed bearings may be either cast in place or installed in holes drilled after the supported member is in place.
- Drilled and set anchor bolts shall be installed according to Article 521.06 of the Standard Specifications.
- Two 1/8 inch adjusting shims shall be provided for each bearing in addition to all other plates or shims and placed as shown on bearing details.
- Anchor bolt sizes and grades shown constitute a calculated seismic structural fuse. Substitution of higher diameter and/or grade bolts will not be allowed.

Location	SHIM PLATE THICKNESS			
	W. Abut.	Pier 1	Pier 2	E. Abut.
Girder 1	-	1/8"	1/8"	-
Girder 2	-	1/8"	1/8"	-
Girder 3	-	1/8"	1/8"	-
Girder 4	-	1/8"	1/8"	-
Girder 5	-	1/8"	1/8"	-
Girder 6	-	1/8"	1/8"	-
Girder 7	3/8"	1/8"	1/4"	-
Girder 8	5/8"	5/8"	1/8"	-
Girder 9	-	1/8"	1/8"	-
Girder 10	-	1/8"	1/8"	-
Girder 11	-	1/8"	1/2"	-
Girder 12	-	5/8"	1/8"	-
Girder 13	1/8"	3/8"	1/8"	-
Girder 14	1/2"	3/8"	1/8"	-
Girder 15	1/8"	1/4"	1/8"	-
Girder 16	1/2"	1/4"	1/8"	-

CMT
CRAWFORD MURPHY & TILLY, INC.
CONSULTING ENGINEERS
SPRINGFIELD, IL ■ AURORA, IL ■ ST. LOUIS, MO
ROCKFORD, IL ■ PEORIA, IL ■ CHICAGO, IL

USER NAME = Gary Davis	DESIGNED - MCC	REVISED -
	CHECKED - ATI	REVISED -
PLOT SCALE =	DRAWN - GLD	REVISED -
PLOT DATE = 1/18/2012	CHECKED - ATI	REVISED -

**STATE OF ILLINOIS
DEPARTMENT OF TRANSPORTATION**

**FRAMING AND BEARING DETAILS
STRUCTURE NO. 100-0093 (W.B.) & 100-0094 (E.B.)**

F.A.P. RTE.	SECTION	COUNTY	TOTAL SHEETS	SHEET NO.
331	(1X-1)VB-1	WILLIAMSON	367	192
			CONTRACT NO. 98859	
ILLINOIS FED. AID PROJECT				

SHEET NO. S-26OF S-41 SHEETS

FILE NAME = I:\v\d\0906603\Drawings\Structural\Sheets\Framing & Bearing Detail.dgn