

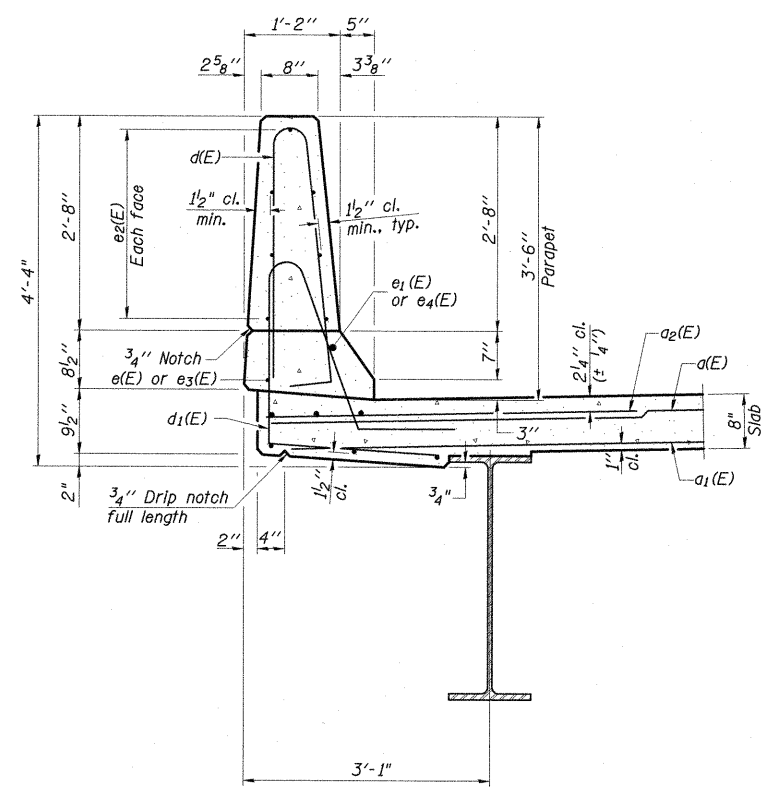
**INSIDE ELEVATION OF PARAPET**  
(East Parapet shown, West opposite)

**S.N. 100-0095 (W.B.)  
SUPERSTRUCTURE  
BILL OF MATERIAL**

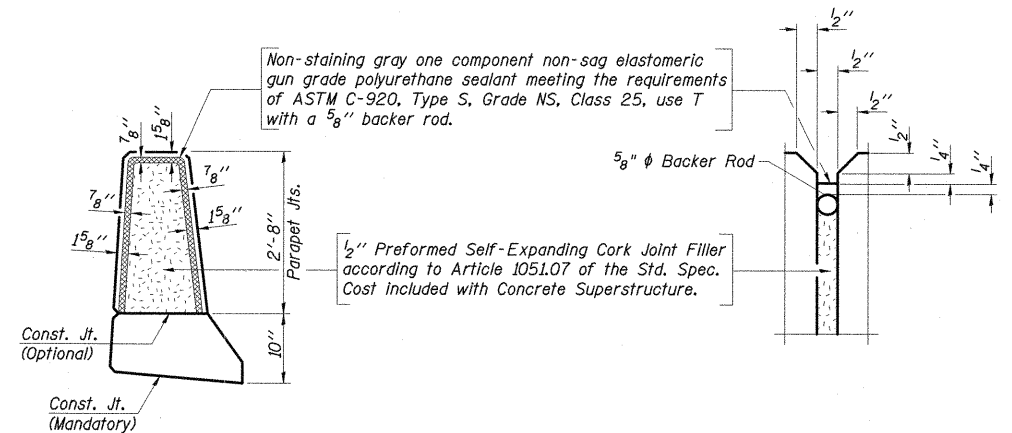
Bar	No.	Size	Length	Shape
a(E)	232	#5	56'-6"	—
a1(E)	137	#5	55'-10"	—
a2(E)	462	#6	6'-6"	—
a3(E)	10	#6	56'-6"	—
a4(E)	36	#6	9'-4"	—
b(E)	342	#5	30'-0"	—
b1(E)	114	#5	16'-2"	—
d(E)	212	#5	6'-10"	⌒
d1(E)	212	#5	7'-7"	⌒
e(E)	6	#4	30'-0"	—
e1(E)	6	#8	36'-0"	—
e2(E)	84	#4	15'-8"	—
e3(E)	2	#4	14'-2"	—
e4(E)	2	#8	8'-8"	—
x(E)	114	#5	6'-2"	⌒
Reinforcement Bars, Epoxy Coated Pound 45,700				
Concrete Superstructure Cu. Yd. 170.7				
Bridge Deck Grooving Sq. Yd. 558				
Protective Coat Sq. Yd. 690				

**S.N. 100-0096 (E.B.)  
SUPERSTRUCTURE  
BILL OF MATERIAL**

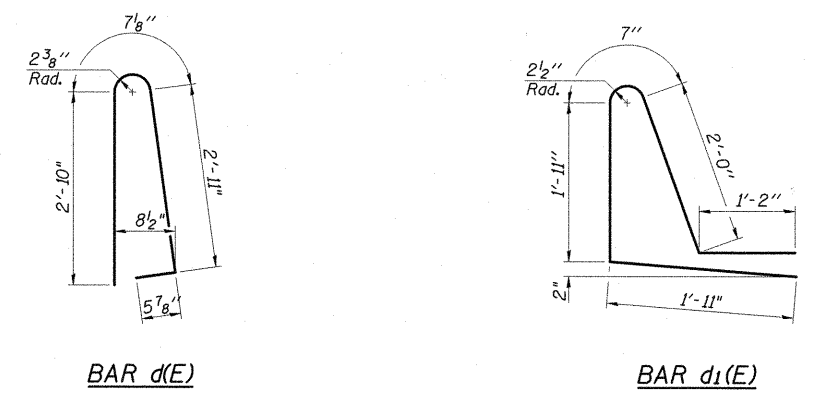
Bar	No.	Size	Length	Shape
a(E)	232	#5	56'-6"	—
a1(E)	137	#5	55'-10"	—
a2(E)	462	#6	6'-6"	—
a3(E)	10	#6	56'-6"	—
a4(E)	36	#6	9'-4"	—
b(E)	180	#5	30'-0"	—
b1(E)	60	#5	16'-2"	—
d(E)	212	#5	6'-10"	⌒
d1(E)	212	#5	7'-7"	⌒
e(E)	6	#4	30'-0"	—
e1(E)	6	#8	36'-0"	—
e2(E)	98	#4	15'-8"	—
e3(E)	2	#4	14'-2"	—
e4(E)	2	#8	8'-8"	—
x(E)	114	#5	6'-2"	⌒
Reinforcement Bars, Epoxy Coated Pound 45,700				
Concrete Superstructure Cu. Yd. 170.7				
Bridge Deck Grooving Sq. Yd. 558				
Protective Coat Sq. Yd. 690				



**SECTION THRU PARAPET**



**PARAPET JOINT DETAILS**

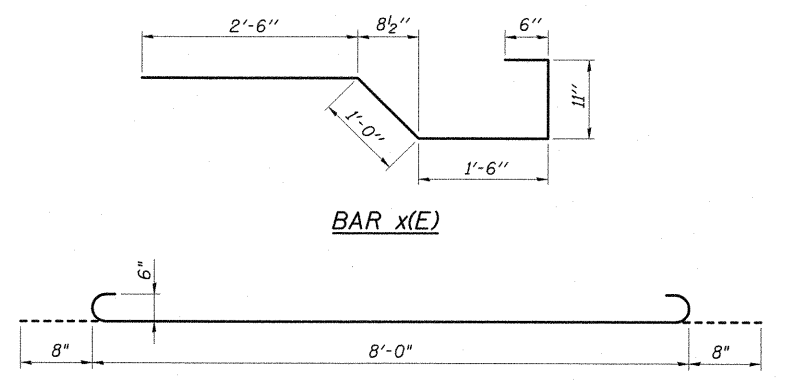


**BAR d(E)**

**BAR d1(E)**

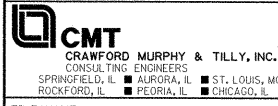
**MIN. BAR LAPS**

#4 Bar = 2'-7"  
#8 Bar = 6'-9"



**BAR x(E)**

**BAR a4(E)**



FILE NAME =	USER NAME =	DESIGNED - SF	REVISED -
I:\doct\0906603\draw\cadd\sheet\structure\al plans\marathon dr bridge\marathon_fina	CHECKED - SUPERS	WLR	REVISED -
PLOT SCALE =	DRAWN - GLD	REVISED -	REVISED -
PLOT DATE =	CHECKED - SF	REVISED -	REVISED -

**STATE OF ILLINOIS  
DEPARTMENT OF TRANSPORTATION**

**SUPERSTRUCTURE DETAILS  
STRUCTURE NO. 100-0095 (W.B.) & 100-0096 (E.B.)**

SHEET NO. 13 OF 32 SHEETS

F.A.P. RTE.	SECTION	COUNTY	TOTAL SHEETS	SHEET NO.
331	(1X-1) VB-1, B-1, N-4, R-3	WILLIAMSON	367	220
			CONTRACT NO. 98859	

ILLINOIS FED. AID PROJECT